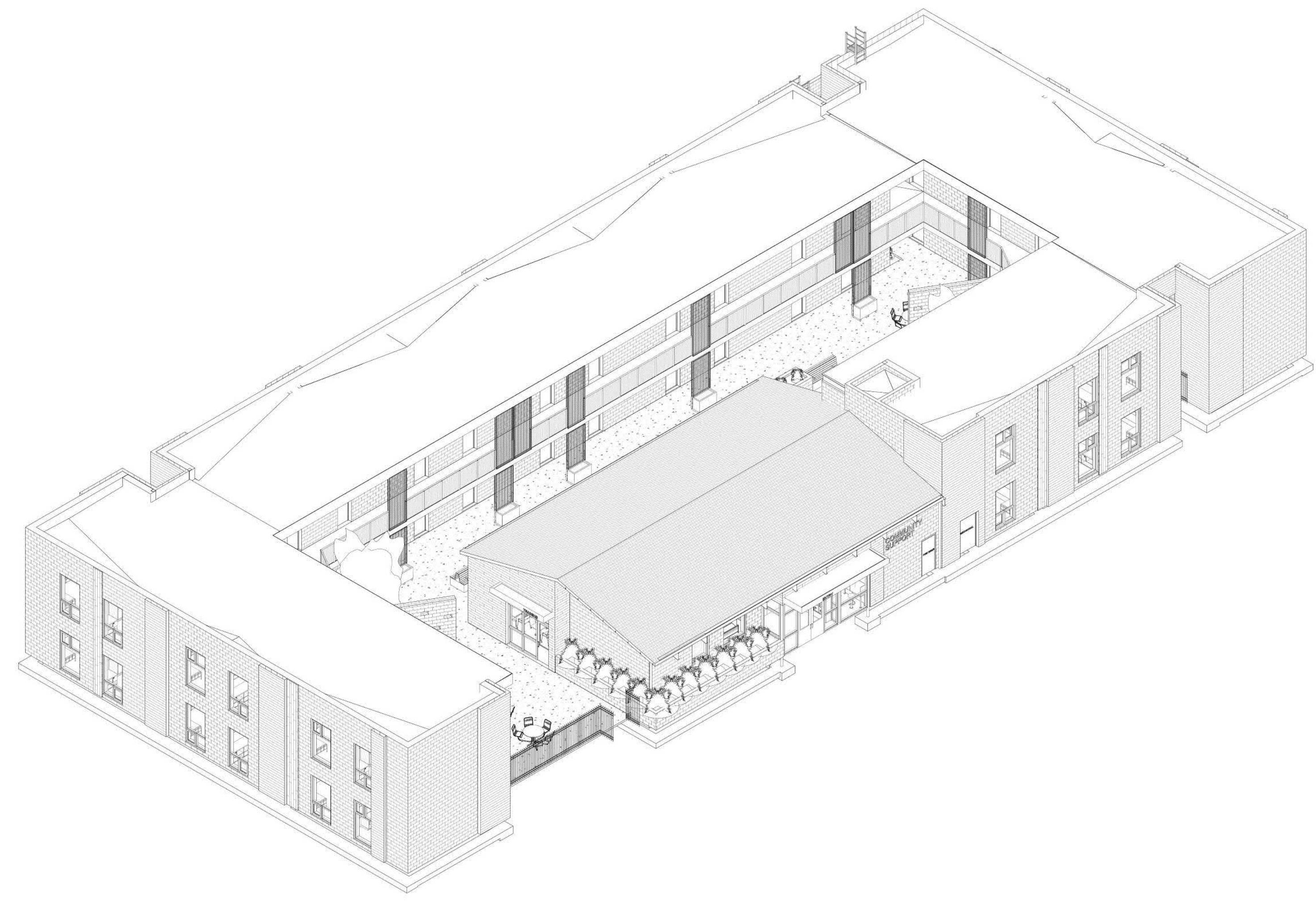


HANGER DETAILS

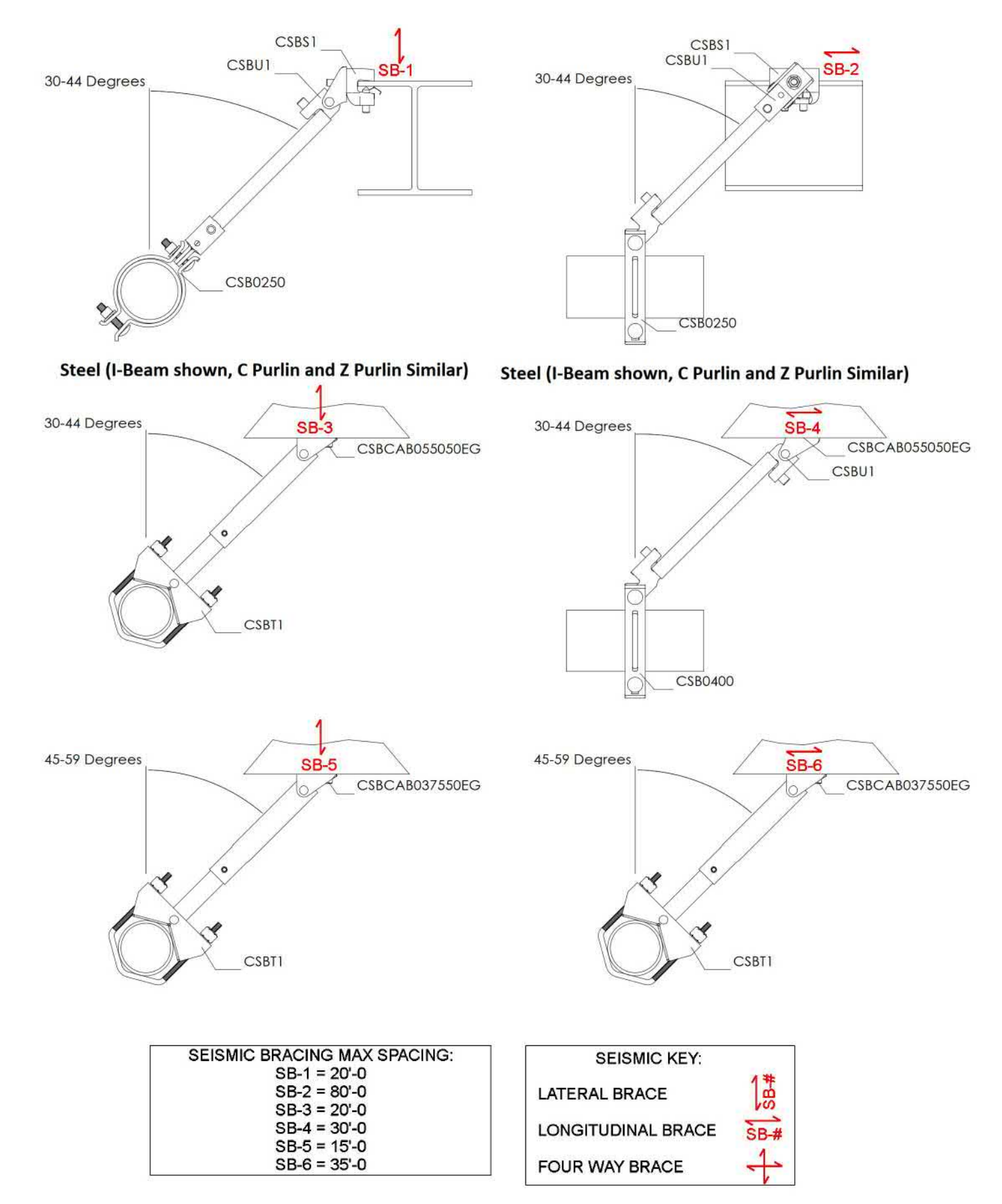
MAXIMUM DISTANCE BETWEEN HANGERS (FT.-IN.)

| | 3/4" | 1" | 1 1/4" | 1 1/2" | 2" | 2 1/2" | 3" | 4" | 6" | 8" |
|--------------------------------------|------|------|--------|--------|------|--------|------|------|----|------|
| STEEL PIPE EXCEPT THREADED LIGHTWALL | NA | 12-0 | 12-0 | 15-0 | 15-0 | 15-0 | 15-0 | 15-0 | NA | 15-0 |
| THREADED LIGHTWALL STEEL PIPE | NA | 12-0 | 12-0 | 12-0 | 12-0 | NA | NA | NA | NA | NA |
| BLAZEMASTER CPVC | 5-6 | 6-0 | 6-6 | 7-0 | 8-0 | 9-0 | 10-0 | NA | NA | NA |

- GENERAL INFORMATION**
- INTERNATIONAL BUILDING CODE (2018)
 - OCCUPANCY: TYPE I-V & B
 - TYPE OF CONSTRUCTION: II-B
 - SPRINKLERED AREAS (APPROXIMATE - SEE ARCHITECTURAL PLANS FOR ACTUAL)
 - 1ST FLOOR = 11,416 S.F.
 - 2ND FLOOR = 8,461 S.F.
 - TOTAL = 19,877 S.F.
 - DESIGN & INSTALLATION STANDARDS: NFPA-13 (2019)
 - SPRINKLER PIPE TYPES:
 - 1" & 1-1/4" PIPE TO BE SCHEDULE 40 BLACK STEEL w/ THREADED FITTINGS
 - 1-1/2" THROUGH 4" MAINS & BRANCH LINES TO BE BLK SCHEDULE 10 w/ GROOVED FITTINGS
 - MAINS & BRANCH LINES TO BE ROLL-GROOVED BLK SCHEDULE 10
 - 2" AND LARGER TO USE GROOVED SHORT RADIUS FITTINGS
 - 1" THROUGH 2" CPVC BRANCHLINES AND MAINS TO BE BLAZEMASTER WITH CEMENTED FITTINGS
 - DESIGN CRITERIA:
 - LIGHT HAZARD AREAS INCLUDE OFFICE/ADMINISTRATIVE, RESTROOMS, CORRIDORS, COMMUNITY ROOMS, TRAINING ROOMS AND RESIDENTIAL UNITS
 - ORDINARY HAZARD GROUP I AREAS INCLUDE MECHANICAL, ELECTRICAL, FIRE RISER, LAUNDRY, CUSTODIAL AND STORAGE ROOMS
 - REMOTE AREA REDUCTIONS HAVE BEEN TAKEN WHERE APPLICABLE PER NFPA 13 SEC. 19.3.3.2.3.
 - REMOTE AREA INCREASED BY 30% FOR SLOPED CEILING PER NFPA 13 SEC. 19.3.3.2.4
 - NOTES:
 - ALL MATERIAL TO BE NEW AND MEET U.L. STANDARDS
 - HANGERS TO BE INSTALLED IN ACCORDANCE WITH NFPA 13 - SEE PLAN FOR HANGING
 - SYMBOLS USED ON DRAWINGS:
 - x-x FFE PIPE ELEVATION ABOVE FINISH FLOOR
 - x-x T S PIPE ELEVATION BELOW TOP OF STEEL
 - OHM ROOM HAZARD CLASSIFICATION (ALL ROOMS ARE CONSIDERED LIGHT HAZARD U.N.O.)
 - HYDRAULIC CALCULATION JUNCTION POINT
 - 9'-0" CEILING HEIGHT
 - BLACK STEEL PIPE
 - CPVC PIPE
 - SCOPE OF WORK:
 - INSTALL A COMPLETE SINGLE ZONE WET FIRE SPRINKLER SYSTEM TO COVER ALL AREAS OF BUILDING
 - ALL AREAS OF THE BUILDING TO BE INSTALLED AND COVERED IN ACCORDANCE WITH THE LOCAL AUTHORITY HAVING JURISDICTION AND PER NFPA 13



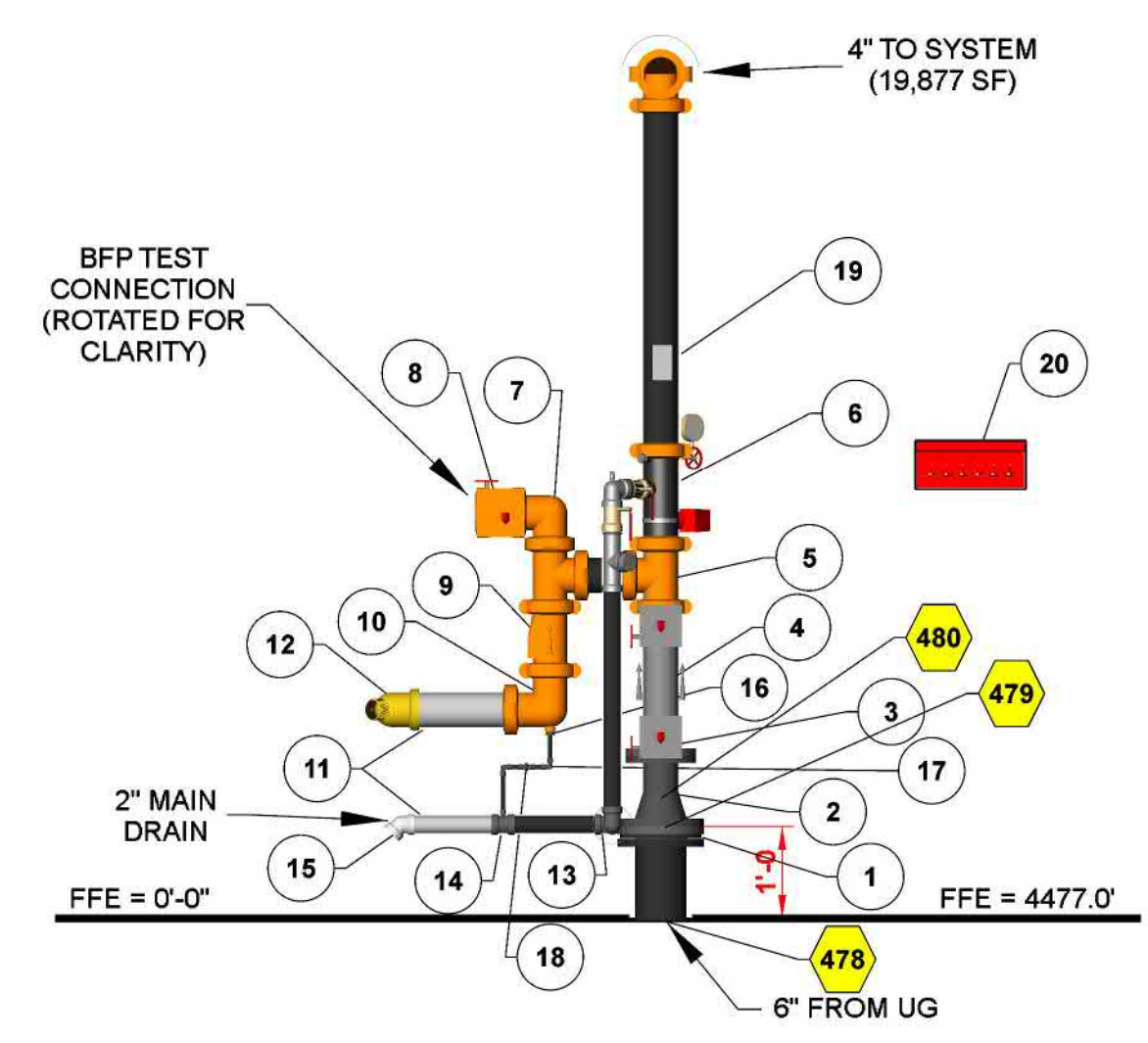
PROJECT ILLUSTRATION
NOT TO SCALE



SEISMIC DETAILS

Sprinkler Legend

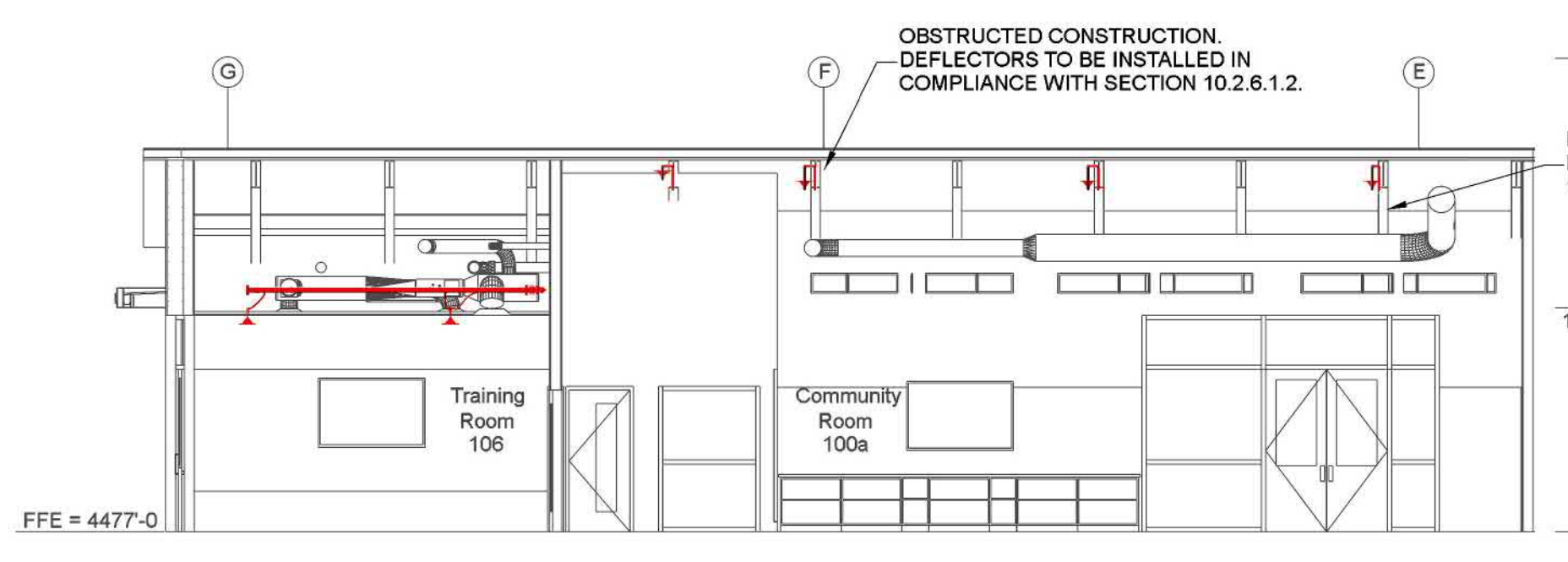
| Symbol | Manufacturer | SIN | Model | Quantity | K-Factor | Type | Size | Response | Finish | Temp | Max Spacing | Esuccheon |
|--------|--------------|--------|--------|----------|----------|---------------------|------|----------|----------------|-------|-------------|-----------|
| ● | Tyco | TY2234 | LFI | 50 | 4.4 | Horizontal Sidewall | 1/2" | Fast | Chrome | 175°F | 16 x 16 | |
| ● | Tyco | TY2236 | LFI | 100 | 4.9 | Pendent | 1/2" | Fast | White RAL 9003 | 175°F | 18 x 18 | |
| ● | Tyco | TY3231 | TY-FRB | 13 | 5.6 | Pendent | 1/2" | Quick | White RAL 9003 | 200°F | | |
| ● | Tyco | TY3131 | TY-FRB | 18 | 5.6 | Upright | 1/2" | Quick | Natural Brass | 200°F | N/A | |
| ● | Tyco | TY3331 | TY-FRB | 1 | 5.6 | Horizontal Sidewall | 1/2" | Quick | Natural Brass | 200°F | N/A | |
| | | | | Total = | 182 | | | | | | | |



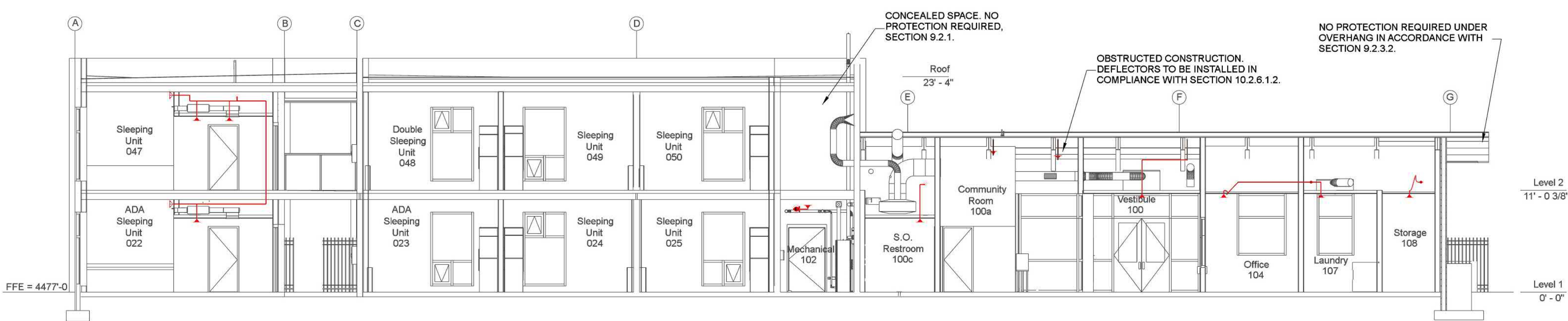
RISER DETAIL LEGEND

| Key Note | Size | Description | Quantity |
|----------|-------------|--|----------|
| 1 | 6 | Uni Flange | 1 |
| 2 | 6 x 4 | Flanged Concentric Reducer | 1 |
| 3 | 4 | Grooved Flange | 1 |
| 4 | 4 | Grooved Derringer 20 Backflow | 1 |
| 5 | 4 | Grooved Tee | 2 |
| 6 | 4 | Grooved Riser Manifold | 1 |
| 7 | 4 | Grooved Elbow 90 | 1 |
| 8 | 4 | Grooved Butterfly Control Valve, Normally Closed | 1 |
| 9 | 4 | Grooved Check Valve | 1 |
| 10 | 4 x 4 x 1 | Grooved Drain Elbow 90 | 1 |
| 11 | 4 & 2 | Galvanized Pipe To Exterior | 1 |
| 12 | 4 | Rough Brass FDC, Two Inlet | 1 |
| 13 | 2 | Threaded Elbow 90 | 2 |
| 14 | 2 x 2 x 1/2 | Threaded Reducing Tee | 1 |
| 15 | 2 | Galvanized Threaded Elbow 45 | 1 |
| 16 | 1 x 1/2 | Threaded Reducing Bushing | 1 |
| 17 | 1/2 | Threaded Elbow 90 | 2 |
| 18 | 1/2 | Threaded Ball Drop | 1 |
| 19 | | Hydraulic Placard | 1 |
| 20 | | Spare Head Cabinet | 1 |

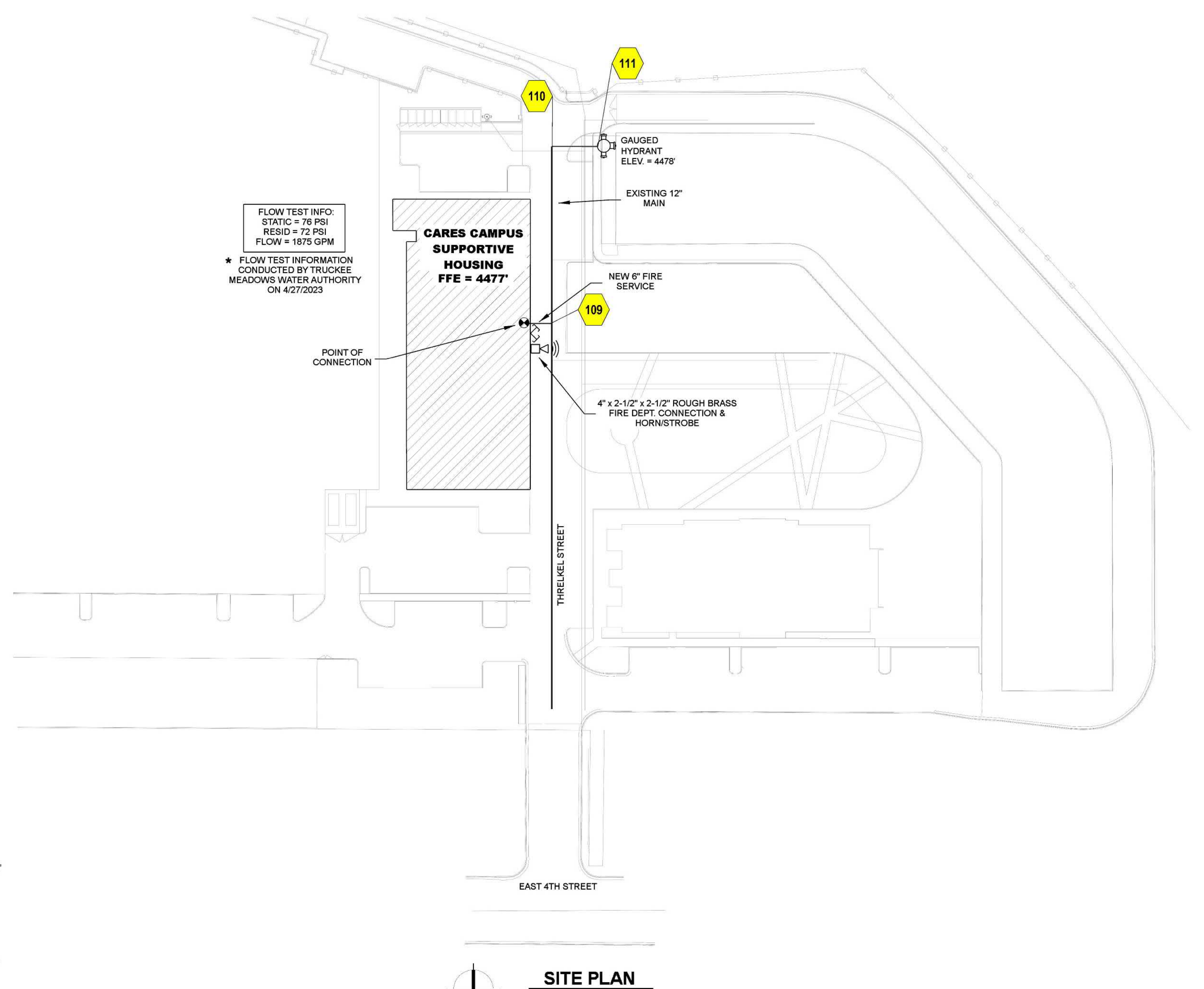
1 RISER DETAIL
SCALE: 1/2" = 1'-0"



A BUILDING SECTION
SCALE: 1/8" = 1'-0"



B BUILDING SECTION
SCALE: 1/8" = 1'-0"

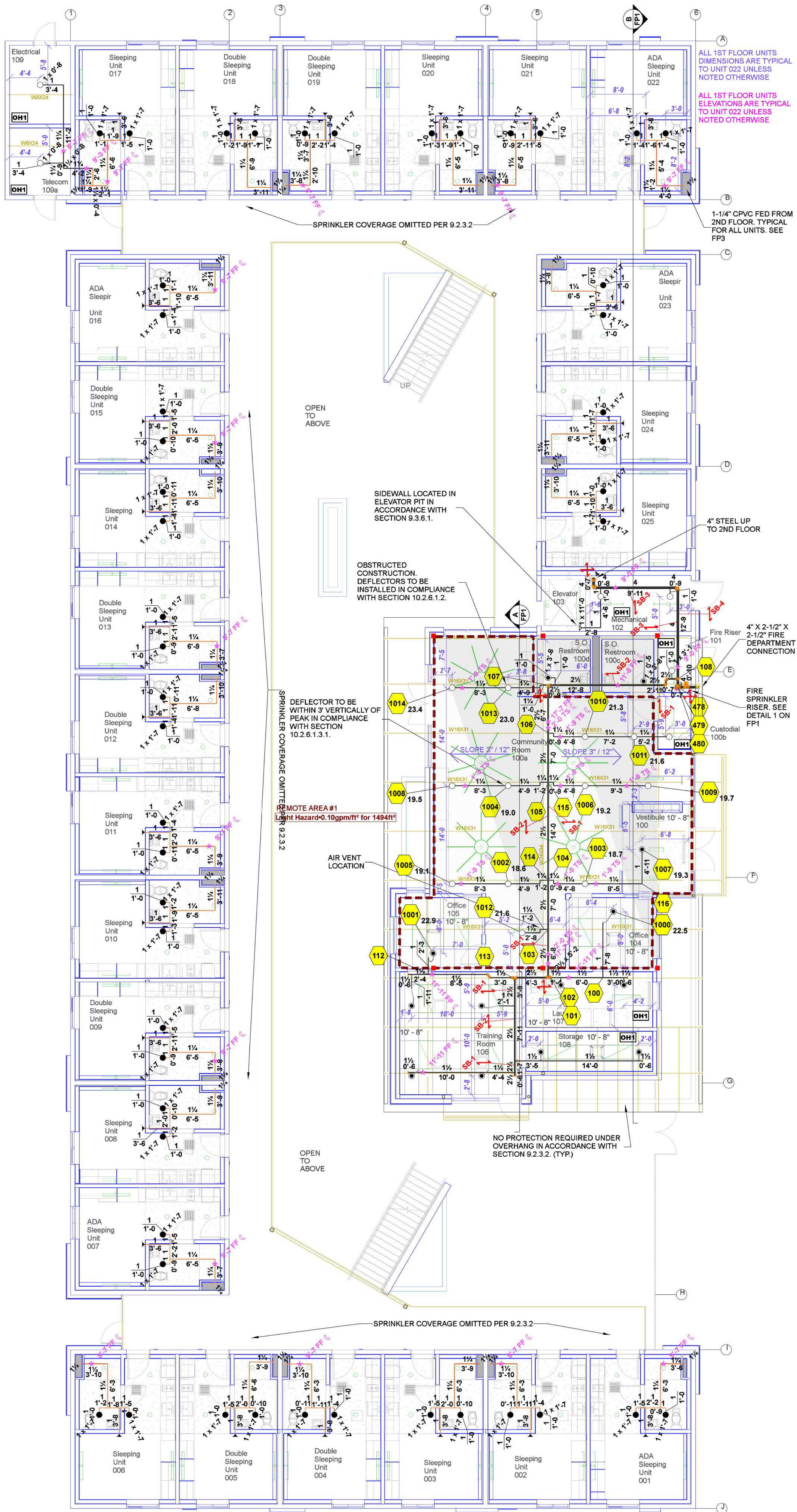


SITE PLAN
SCALE: 1" = 50'-0"

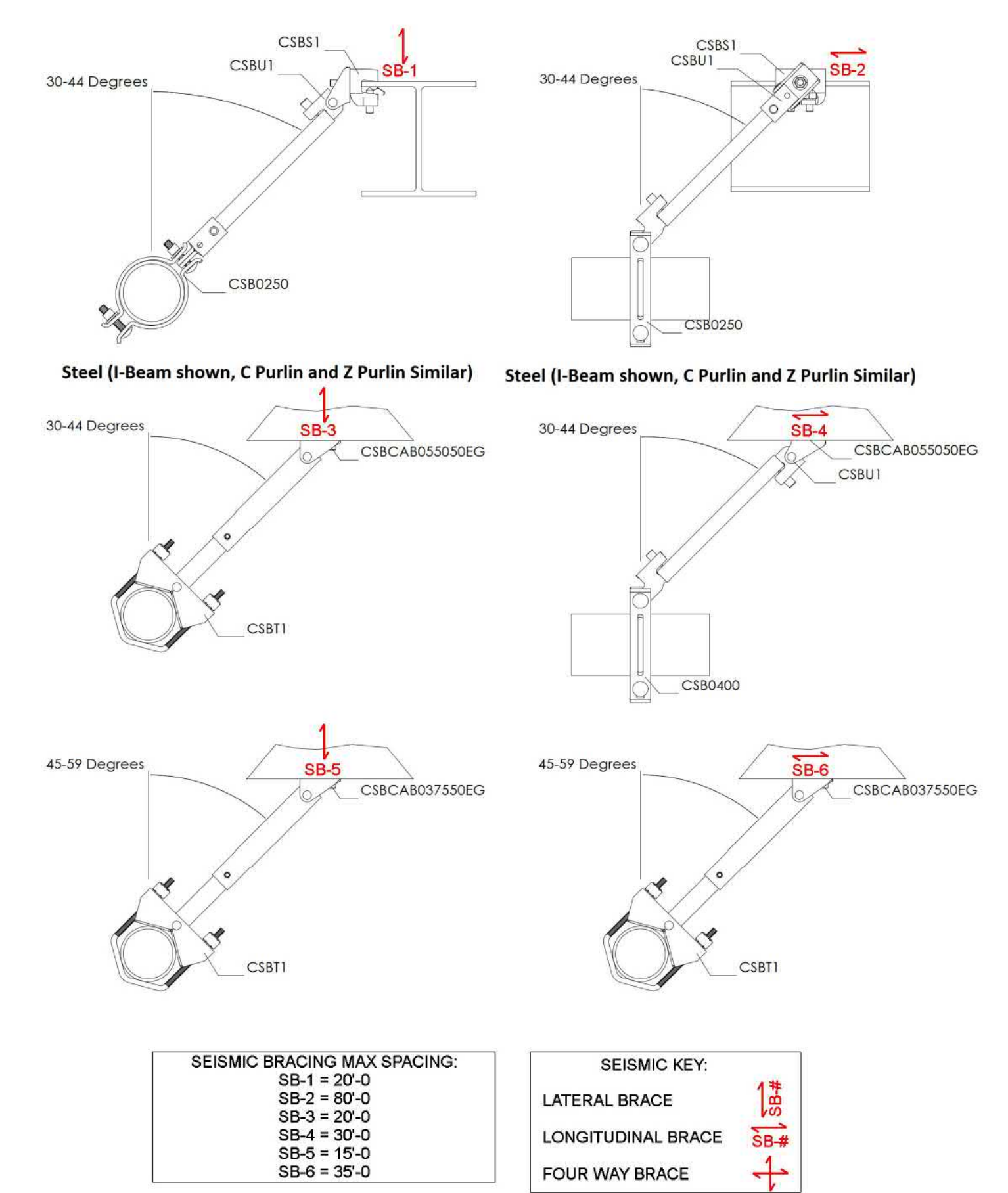
AHJ APPROVAL BOX

FIRE SPRINKLER PLANS
FIRE SPRINKLER DETAILS
CARES CAMPUS SUPPORTIVE HOUSING
1800 THRELKEL STREET
RENO, NV 89512

PRINTED ON 06/07/24 AT 11:30AM BY CARES PHASE 1_prepped.cad



| Sprinkler Legend | | | | | | | | | | | | |
|------------------|--------------|--------|--------|----------|----------|---------------------|----------|--------|-------------|-------------|------------|----------|
| Symbol | Manufacturer | SIN | Model | Quantity | K-Factor | Type | Response | Finish | Temperature | Max Spacing | Escutcheon | |
| ● | Tyco | TY2334 | LFII | 25 | 4.4 | Horizontal Sidewall | 1/2 | Fast | White | 175°F | 16 x 16 | Recessed |
| ● | Tyco | TY2236 | LFII | 50 | 4.9 | Pendent | 1/2 | Fast | White | 175°F | 18 x 18 | Recessed |
| ● | Tyco | TY2331 | TY-FRB | 13 | 5.6 | Pendent | 1/2 | Quick | White | 200°F | 15 x 15 | Recessed |
| ● | Tyco | TY3335 | DS-1 | 28 | 5.6 | Horizontal Sidewall | 1 | Quick | Chrome | 200°F | 14 x 14 | Recessed |
| ● | Tyco | TY3131 | TY-FRB | 18 | 5.6 | Upright | 1/2 | Quick | Brass | 200°F | 15 x 15 | NA |
| ● | Tyco | TY3331 | TY-FRB | 1 | 5.6 | Horizontal Sidewall | 1/2 | Quick | Brass | 200°F | 14 x 14 | Recessed |
| | | | | Total = | 135 | | | | | | | |

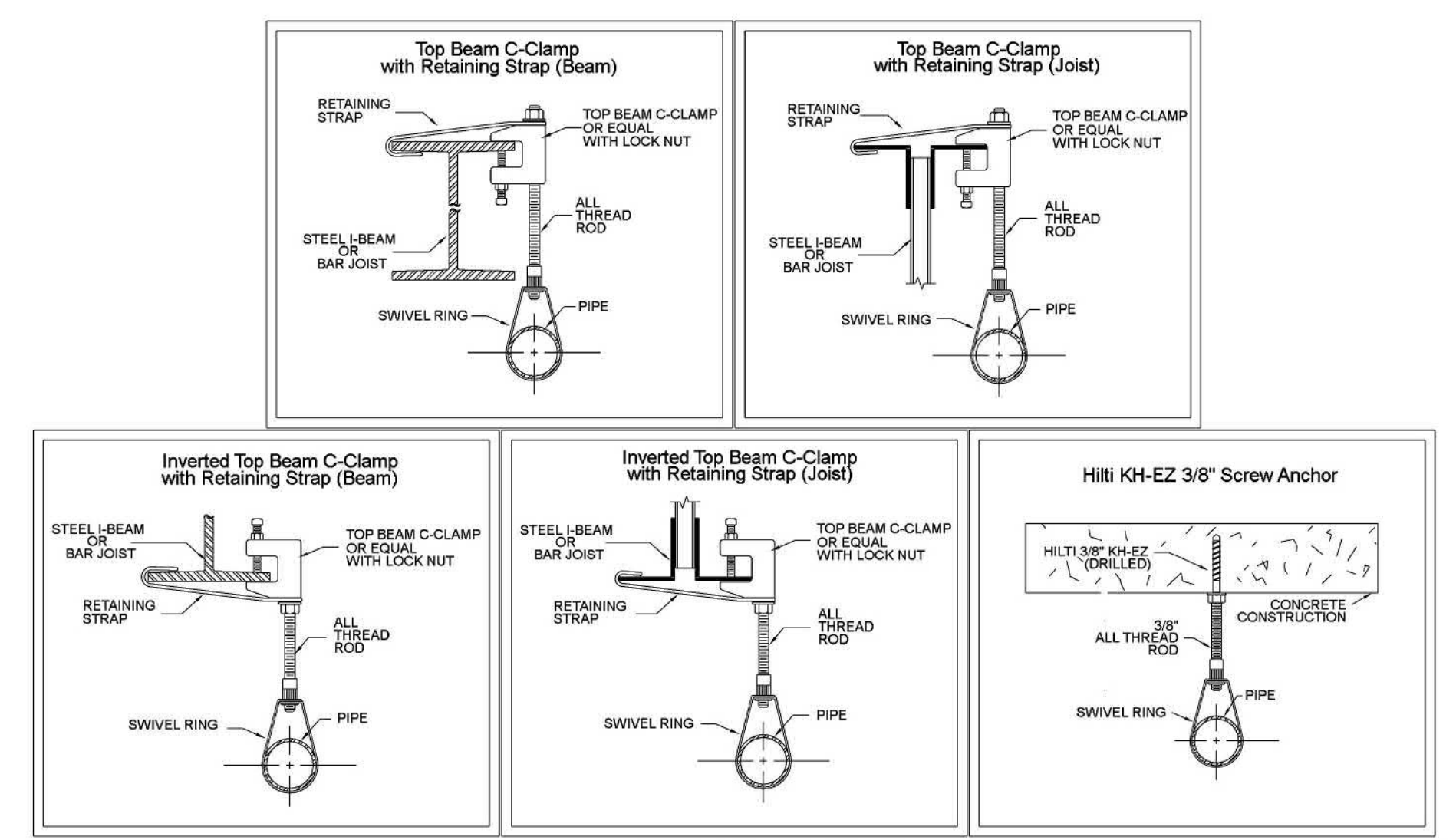


| Hydraulic Information | |
|--------------------------|--------------------------------|
| Remote Area 1 | |
| OCCUPANCY CLASSIFICATION | Light Hazard |
| DENSITY (ppm/ft) | 0.10 for 1950R (Actual 1494ft) |
| QUICK RESPONSE REDUCTION | 19'-8" Ceiling (25.8%) 1493ft |
| TOTAL HOSE STREAMS | 100.0 |
| TOTAL HEADS FLOWING | 15 |
| K-FACTOR | 5.6 |
| TOTAL WATER REQUIRED | 408.4 |
| TOTAL PRESSURE REQUIRED | 51.7 |
| BASE OF RISER (gpm) | 308.4 |
| BASE OF RISER (psi) | 51.3 |
| SAFETY MARGIN (psi) | +24.1 (31.8%) |

REMOTE AREA 1 WAS CALCULATED USING THE DENSITY / AREA METHOD. REMOTE AREA INCREASED BY 30% IN ACCORDANCE WITH SECTION 19.3.3.4. OR REMOTE AREA REDUCTION WAS APPLIED IN ACCORDANCE WITH SECTION 19.3.3.2.3.

1ST FLOOR FIRE SPRINKLER PLAN
SCALE: 1/8" = 1'-0"

INSTALLATION NOTE
8'-0" UNIT BATHROOM / HALLWAY CEILING HEIGHT U.N.O
10'-8" BEDROOM CEILING HEIGHT U.N.O



HANGER DETAILS

| | MAXIMUM DISTANCE BETWEEN HANGERS (FT.-IN.) | | | | | | | | | |
|--------------------------------------|--|------|--------|--------|------|--------|------|------|------|------|
| | 3/4" | 1" | 1 1/4" | 1 1/2" | 2" | 2 1/2" | 3" | 4" | 6" | 8" |
| STEEL PIPE EXCEPT THREADED LIGHTWALL | NA | 12-0 | 12-0 | 15-0 | 15-0 | 15-0 | 15-0 | 15-0 | 15-0 | 15-0 |
| THREADED LIGHTWALL STEEL PIPE | NA | 12-0 | 12-0 | 12-0 | 12-0 | NA | NA | NA | NA | NA |
| BLAZEMASTER CPVC | 5-6 | 6-0 | 6-6 | 7-0 | 8-0 | 9-0 | 10-0 | NA | NA | NA |

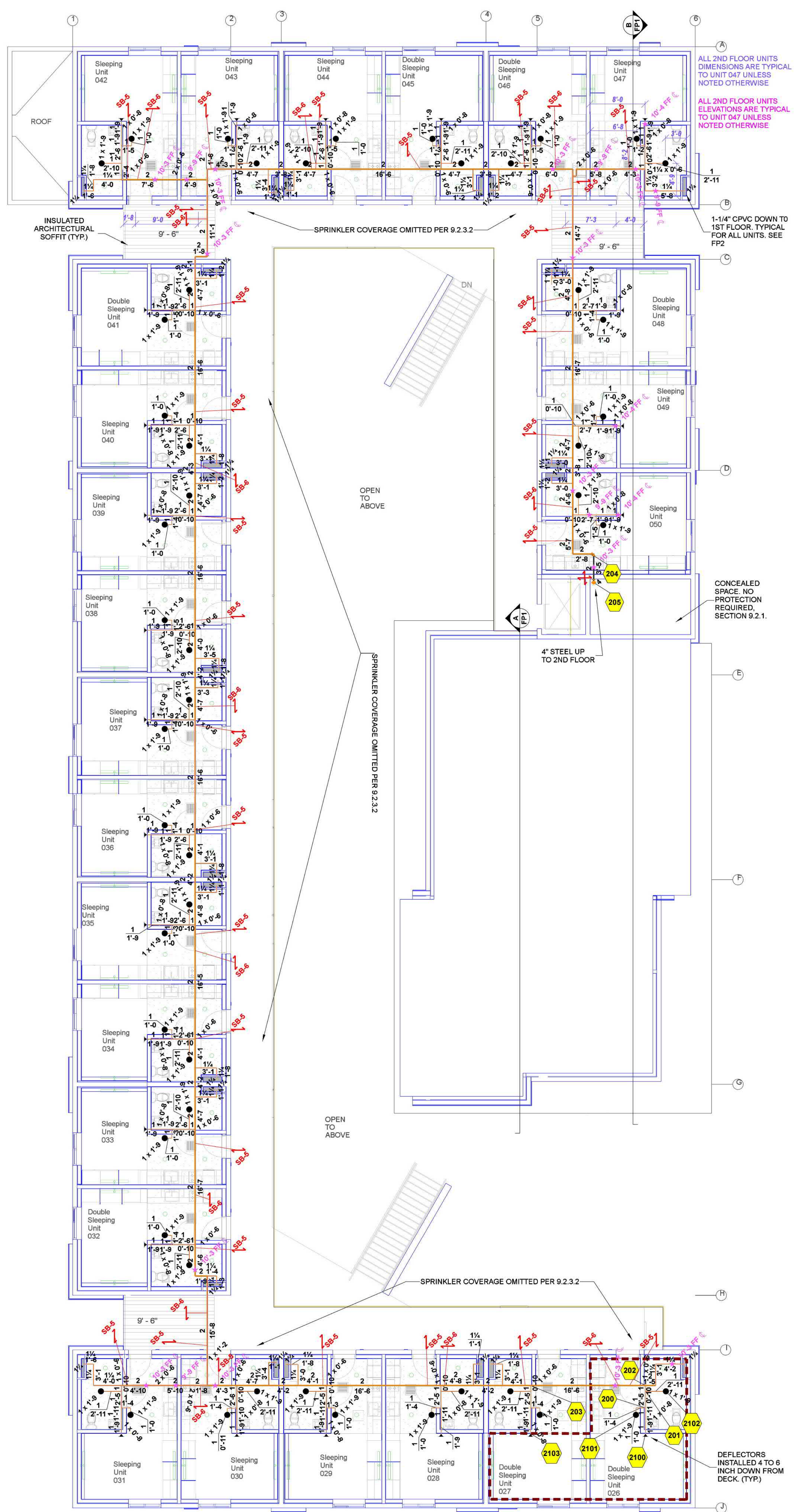
AHJ APPROVAL BOX

FIRE SPRINKLER PLANS
1ST FLOOR FIRE SPRINKLER PLANS
CARES CAMPUS
SUPPORTIVE HOUSING
1800 THRELKEL STREET
RENO, NV 89512

SCALE: 1/8" = 1'-0"

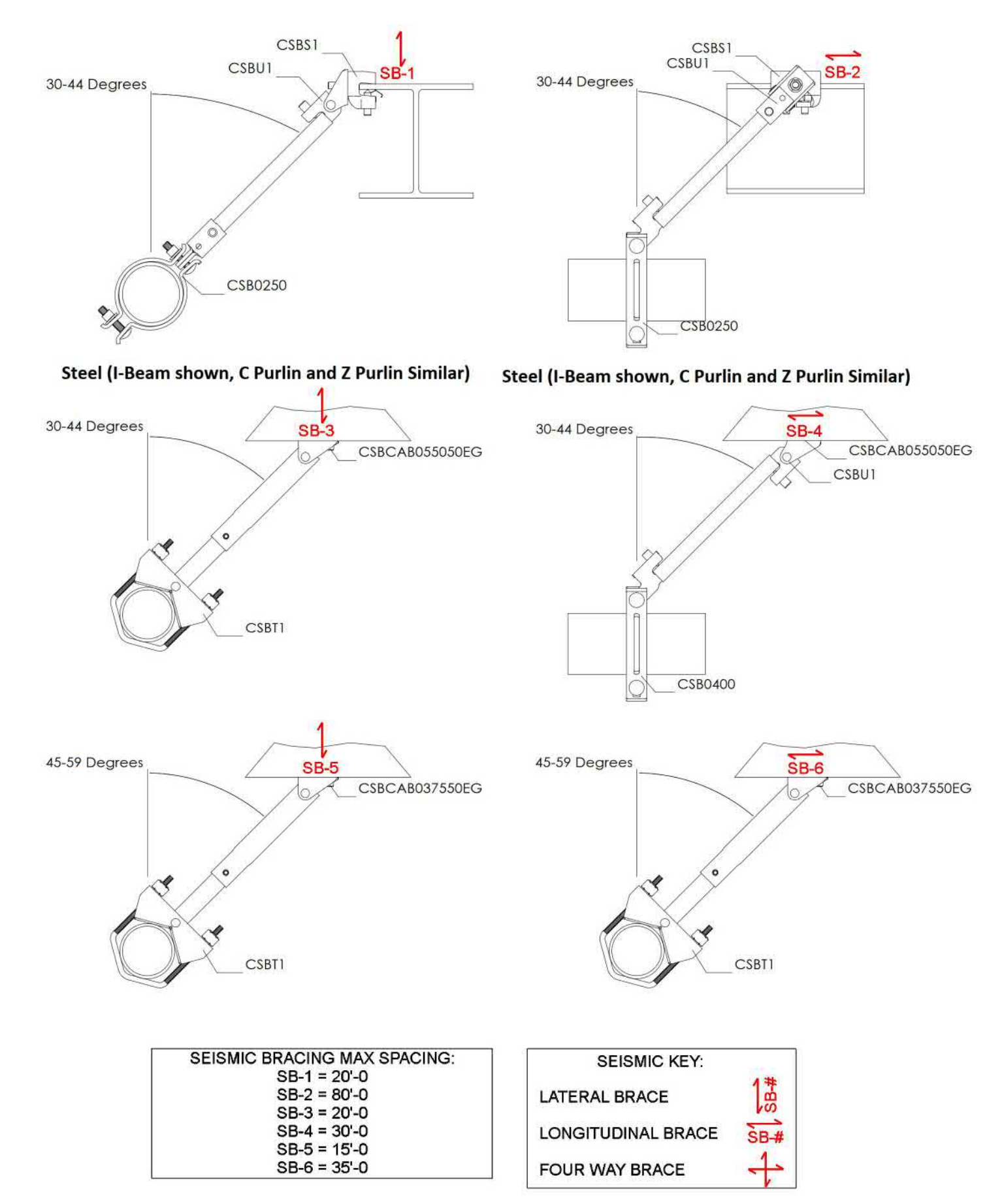
Sheet No:
FP2 OF 3

PRINTED ON 06/07/24 AT 11:06:24 AM BY CARY CARES PHASE 1_prepped.dwg



Sprinkler Legend

| Symbol | Manufacturer | SIN | Model | Quantity | K-Factor | Type | Size | Response | Finish | Temperature | Max Spacing | Escutcheon |
|--------|--------------|--------|-------|--------------------|----------|---------------------|------|----------|--------|-------------|-------------|------------|
| ● | Tyco | TY2236 | LFPI | 50 | 4.9 | Pendent | 1/2" | Fast | White | 175°F | 18 x 18 | Recessed |
| ▲ | Tyco | TY4334 | LFPI | 25 | 6.8 | Horizontal Sidewall | 1/2" | Fast | White | 175°F | 16 x 16 | Recessed |
| ▶ | Tyco | TY3335 | DS-1 | 28 | 5.6 | Horizontal Sidewall | 1" | Quick | Chrome | 200°F | 15 x 15 | Recessed |
| ▶ | Tyco | TY3338 | DS-1 | 1 | 5.6 | Horizontal Sidewall | 1" | Quick | Chrome | 165°F | 18 x 16 | Recessed |
| | | | | Total = 104 | | | | | | | | |

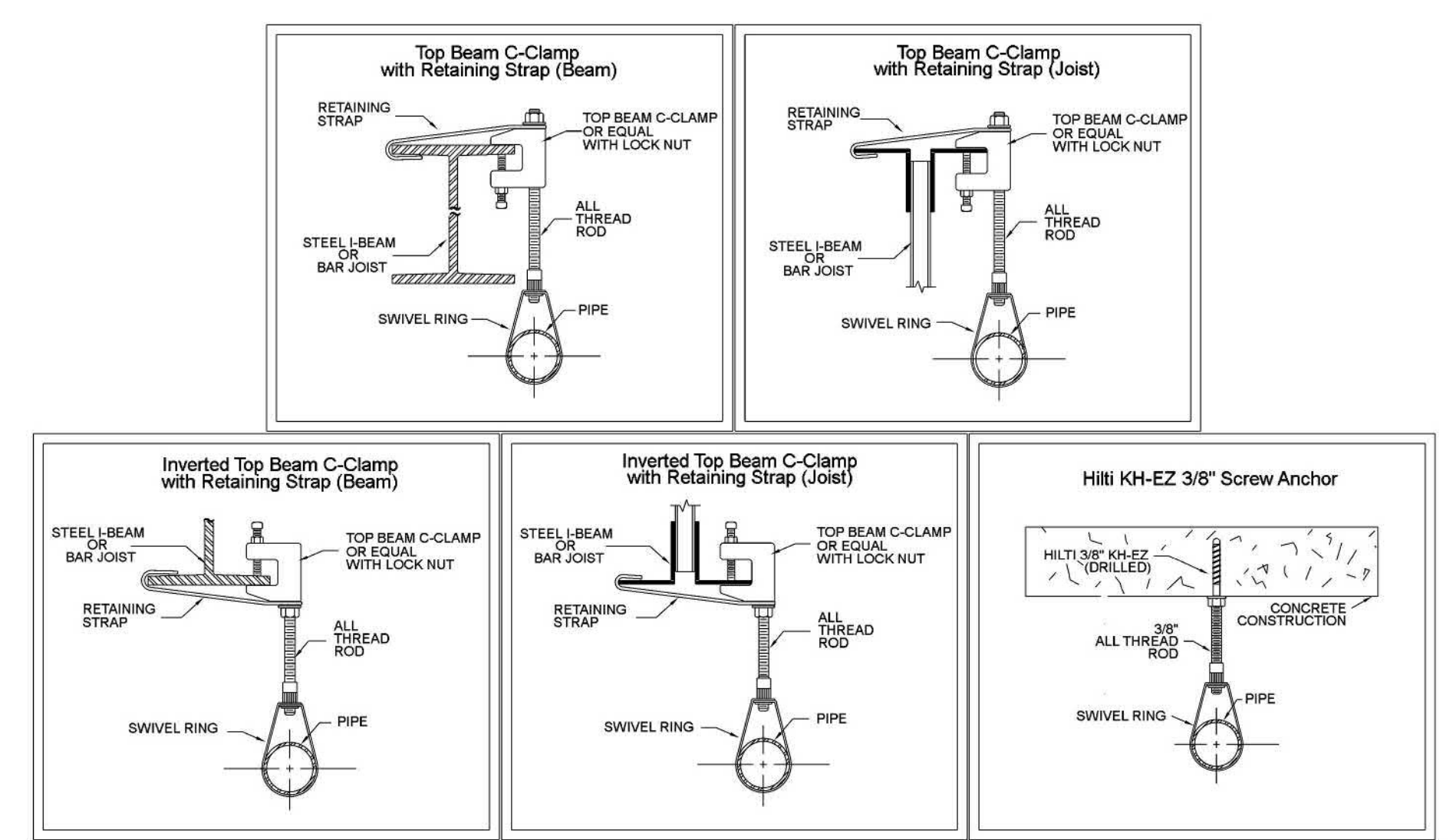


Hydraulic Information

| Remote Area 2 | |
|--------------------------------|--|
| OCCUPANCY CLASSIFICATION | Residential |
| DENSITY (gpm/ft ²) | 0.10 for 300ft ² (Actual 414ft ²) |
| TOTAL HOSE STREAMS | 100.0 |
| TOTAL HEADS FLOWING | 4 |
| K-FACTOR | 4.4 |
| TOTAL WATER REQUIRED | 171.8 |
| TOTAL PRESSURE REQUIRED | 53.3 |
| BASE OF RISER (gpm) | 71.8 |
| BASE OF RISER (psi) | 53.3 |
| SAFETY MARGIN (psi) | +22.6 (29.8%) |

REMOTE AREA 2 WAS CALCULATED USING THE 4 MOST DEMANDING HEADS IN ACCORDANCE WITH 19.4.1.1.

INSTALLATION NOTE
 8'-0" UNIT BATHROOM / HALLWAY CEILING HEIGHT U.N.O
 10'-8" BEDROOM CEILING HEIGHT U.N.O



MAXIMUM DISTANCE BETWEEN HANGERS (FT.-IN.)

| | 3/4" | 1" | 1 1/4" | 1 1/2" | 2" | 2 1/2" | 3" | 4" | 6" | 8" |
|--------------------------------------|------|------|--------|--------|------|--------|------|------|------|------|
| STEEL PIPE EXCEPT THREADED LIGHTWALL | NA | 12-0 | 12-0 | 15-0 | 15-0 | 15-0 | 15-0 | 15-0 | 15-0 | 15-0 |
| THREADED LIGHTWALL STEEL PIPE | NA | 12-0 | 12-0 | 12-0 | 12-0 | NA | NA | NA | NA | NA |
| BLAZEMASTER CPVC | 5-6 | 6-0 | 6-6 | 7-0 | 8-0 | 9-0 | 10-0 | NA | NA | NA |

2ND FLOOR FIRE SPRINKLER PLAN
 SCALE: 1/8" = 1'-0"

AHJ APPROVAL BOX

FIRE SPRINKLER PLANS
2ND FLOOR FIRE SPRINKLER PLANS
 CARES CAMPUS
 SUPPORTIVE HOUSING
 1800 THRELKEL STREET
 RENO, NV 89512

SCALE: 1/8" = 1'-0"

FP3 OF 3

PRINTED ON 06/07/24 AT 11:05:10 AM CARES PHASE 1 - proposed.dwg