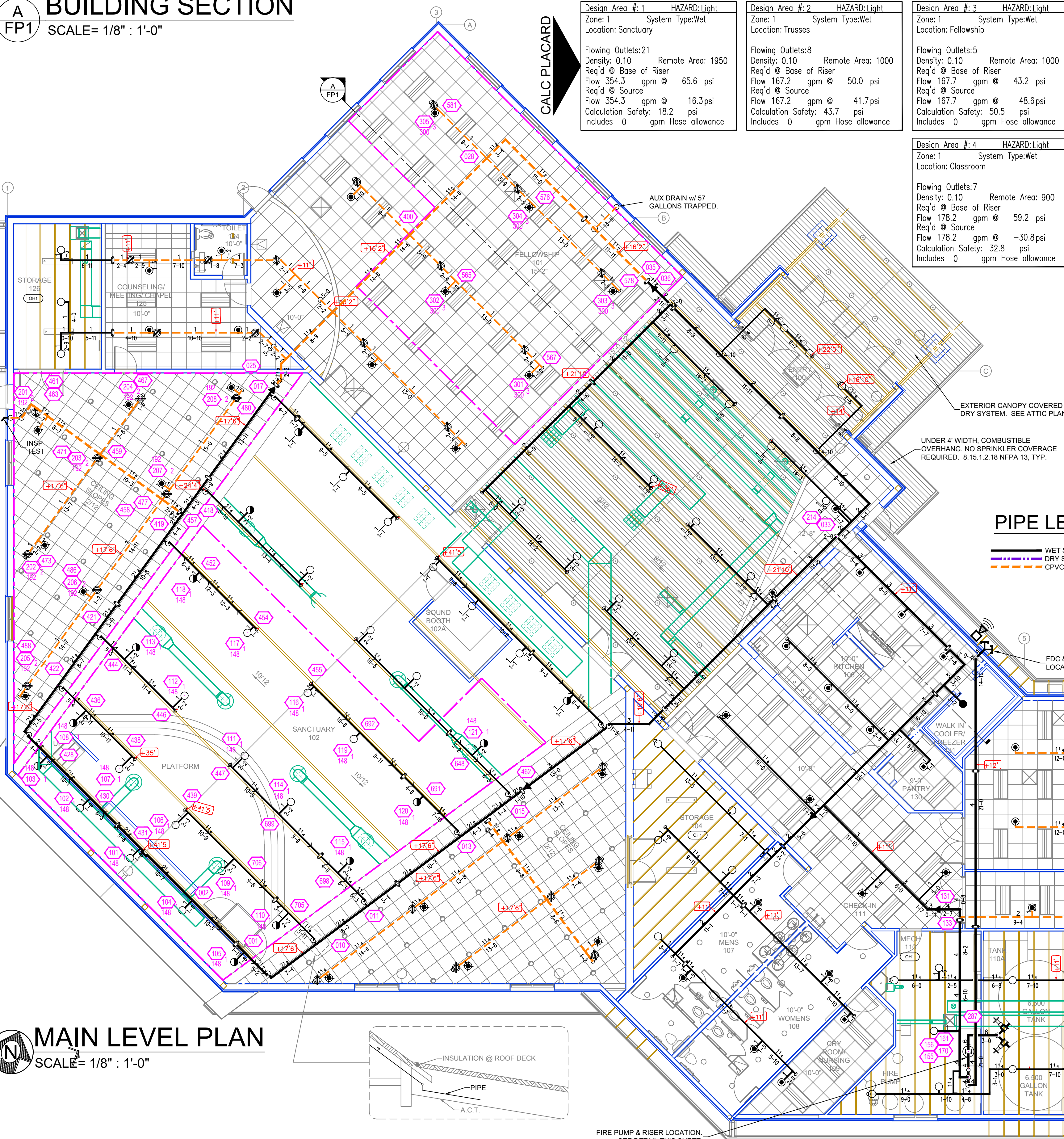


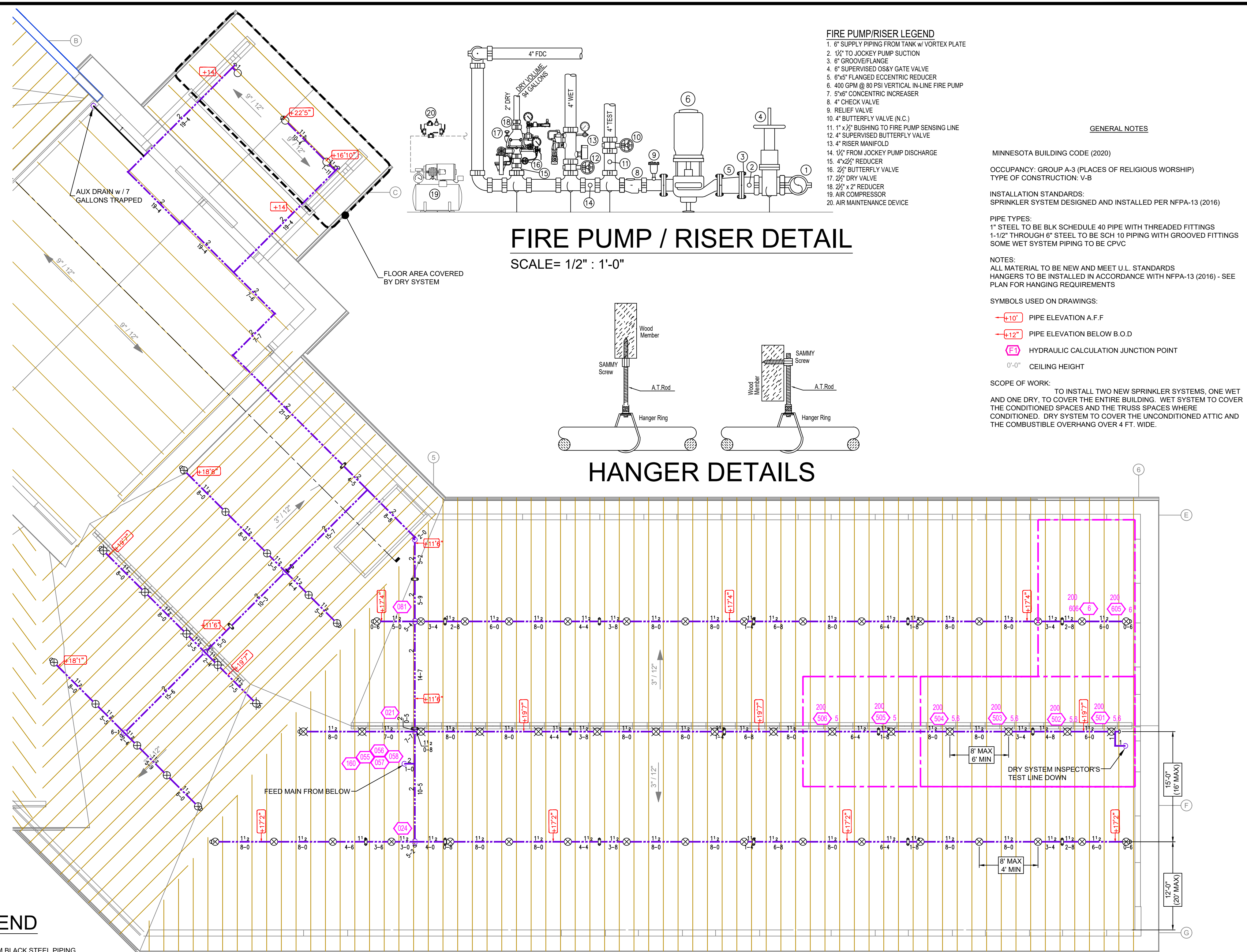
A BUILDING SECTION
SCALE= 1/8" : 1'-0"

NFPA 13 STEEL PIPE HANGER SPACING (ROOF LIGHT/WALL THRU PIPING)		NFPA 13 CPVC PIPE HANGER SPACING	
NOMINAL SIZE INCHES	MAX SPACING FEET	NOMINAL SIZE INCHES	MAX SPACING FEET
1"	12'-0"	3/4"	5'-0"
1-1/4"	12'-0"	1"	6'-0"
1-1/2"	15'-0"	1-1/4"	6'-0"
2"	15'-0"	1-1/2"	7'-0"
2-1/2"	15'-0"	2"	8'-0"
3"	15'-0"	2-1/2"	9'-0"
4" LARGER	15'-0"	3"	10'-0"

Design Area #	HAZARD: Light	System Type	Wet/Dry	Location
1	Light	Wet	Wet	Sanctuary
2	Light	Wet	Wet	Trusses
3	Light	Wet	Wet	Fellowship
4	Light	Wet	Wet	Classroom
5	Light	Wet	Wet	Attic
6	Light	Wet	Wet	Attic

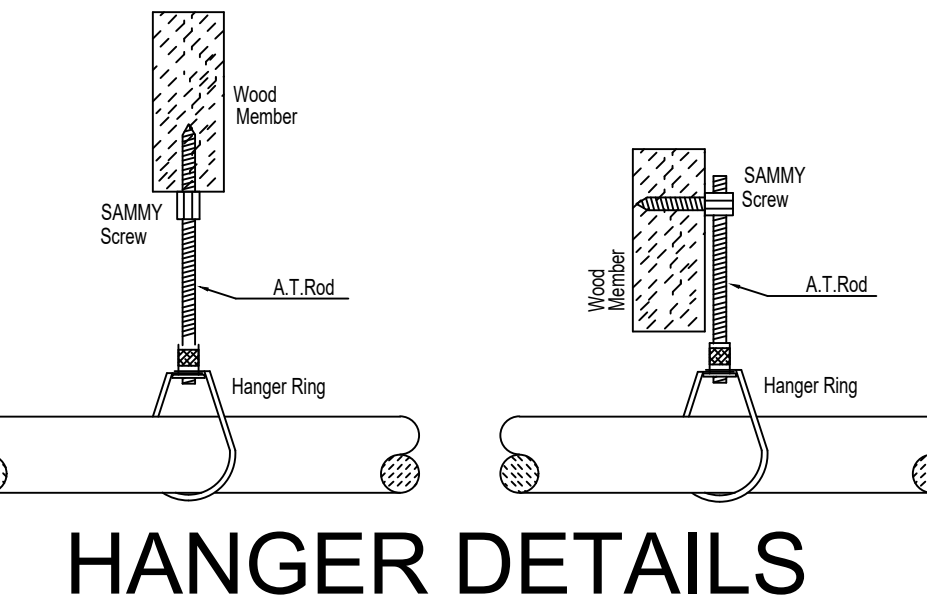


MAIN LEVEL PLAN
SCALE= 1/8" : 1'-0"



ATTIC FIRE SPRINKLER PLAN
SCALE= 1/8" : 1'-0"

FIRE PUMP / RISER DETAIL
SCALE= 1/2" : 1'-0"



PIPE LEGEND

- WET SYSTEM BLACK STEEL PIPING
- DRY SYSTEM BLACK STEEL PIPING
- CPVC BLAZEMASTER PIPING

- FIRE PUMP/RISER LEGEND**
1. 6" SUPPLY PIPING FROM TANK w/ VORTEX PLATE
 2. 1/2" TO JOCKEY PUMP SUCTION
 3. 6" GROOVER/LANGE
 4. 8" SUPERVISOR'S DRY GATE VALVE
 5. 8" FLANGED ECCENTRIC REDUCER
 6. 400 GPM @ 80 PSI VERTICAL IN-LINE FIRE PUMP
 7. 5" CONCENTRIC WREASER
 8. 4" CHECK VALVE
 9. RELIEF VALVE
 10. 4" BUTTERFLY VALVE (N.C.)
 11. 1" 1/2" BUSHING TO FIRE PUMP SENSING LINE
 12. 4" SUPERVISOR'S BUTTERFLY VALVE
 13. 4" RISER MANIFOLD
 14. 1/2" FROM JOCKEY PUMP DISCHARGE
 15. 4" SUPERVISOR'S BUTTERFLY VALVE
 16. 2" BUTTERFLY VALVE
 17. 2" DRY VALVE
 18. 2" 1/2" REDUCER
 19. AIR COMPRESSOR
 20. AIR MAINTENANCE DEVICE

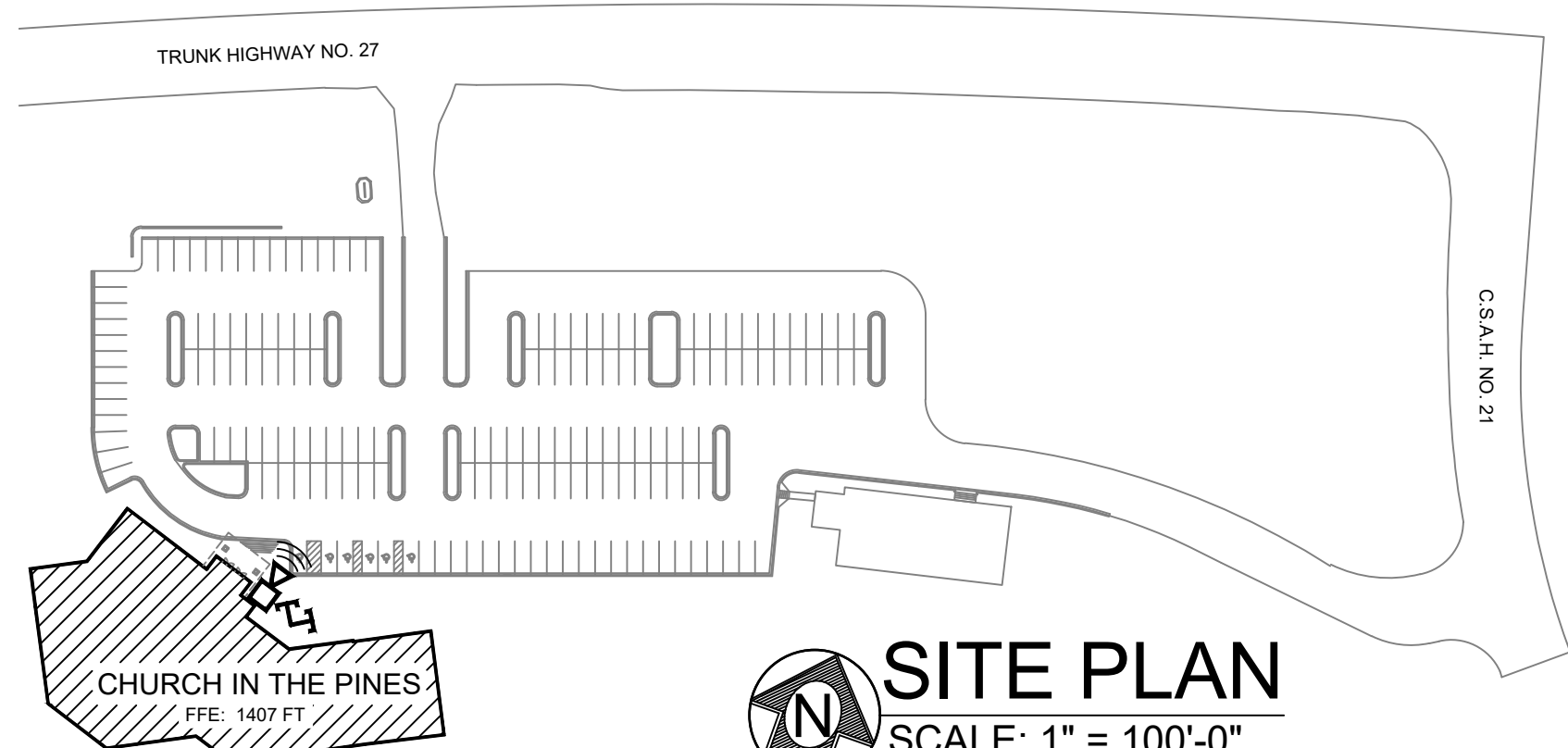
GENERAL NOTES

- MINNESOTA BUILDING CODE (2020)
OCCUPANCY: GROUP A-3 (PLACES OF RELIGIOUS WORSHIP)
TYPE OF CONSTRUCTION: V-B
- INSTALLATION STANDARDS:
SPRINKLER SYSTEM DESIGNED AND INSTALLED PER NFPA-13 (2016)
- PIPE TYPES:
1" STEEL TO BE BLK SCHEDULE 40 PIPE WITH THREADED FITTINGS
1-1/2" THROUGH 6" STEEL TO BE SCH 10 PIPING WITH GROOVED FITTINGS
SOME WET SYSTEM PIPING TO BE CPVC
- NOTES:
ALL MATERIAL TO BE NEW AND MEET U.L. STANDARDS
HANGERS TO BE INSTALLED IN ACCORDANCE WITH NFPA-13 (2016) - SEE PLAN FOR HANGING REQUIREMENTS
- SYMBOLS USED ON DRAWINGS:
-ELEVATION A.F.F.
-ELEVATION BELOW B.O.D.
HYDRAULIC CALCULATION JUNCTION POINT
CEILING HEIGHT
- SCOPE OF WORK:
TO INSTALL TWO NEW SPRINKLER SYSTEMS, ONE WET AND ONE DRY, TO COVER THE ENTIRE BUILDING. WET SYSTEM TO COVER THE CONDITIONED SPACES AND THE TRUSS SPACES WHERE CONDITIONED. DRY SYSTEM TO COVER THE UNCONDITIONED ATTIC AND THE COMBUSTIBLE OVERHANG OVER 4 FT. WIDE.

Design Area #	HAZARD: Light	System Type	Wet/Dry	Location
5	Light	Wet	Wet	Attic
6	Light	Wet	Wet	Attic

SYM	CNT	POSITION	FINISH	TEMP	K	NFP	SIN	MFG.	MODEL#	ESCUTCHEON	MAX SPACING
47	PEND	WHITE	212	11.20	34"	TY522	Typo	ELOC	CONCEALED	18x18	
36	PEND	WHITE	200	5.60	12"	TY331	Typo	RPI	CONCEALED	Standard	
12	UPR	BRASS	200	4.20	12"	TY131	Typo	TY-FRB	N/A	Standard	
16	UPR	BRASS	200	5.60	12"	TY131	Typo	TY-FRB	N/A	Standard	
29	UPR	BRASS	200	5.60	12"	TY319	Typo	CC-3	N/A	18x18	
41	UPR	BRASS	200	5.60	12"	V5821	Vitaculo	FL-SADS	N/A	See cut sheet	
20	UPR	BRASS	200	5.60	12"	V5820	Vitaculo	FL-SARE	N/A	See cut sheet	
240 TOTAL											

SPRINKLER HEAD LEGEND



SITE PLAN
SCALE= 1" = 100'-0"

GENERAL NOTES

1. SYSTEM INSTALLED PER NFPA-13 (2016 EDITION) AND STATE FIRE MARSHAL
2. ALL EQUIPMENT FOR THIS SYSTEM SHALL BE U.L. LISTED
3. MINIMUM PIPE SIZE SHALL BE 1" NOMINAL PIPE
4. ALL SCH-10 & LIGHTWALL PIPING HAS WELDED OUTLETS & GROOVED SHORT RADIUS FITTINGS
5. ALL WELDING PER NFPA-514(2015)
6. NO INSTALLATION OR FABRICATION TO BEGIN WITHOUT APPROVED SHOP DRAWINGS
7. ALL PIPE LOCATIONS ARE TO BE FIELD MEASURED PRIOR TO FABRICATION AND INSTALLATION BY SPRINKLER CONTRACTOR
8. ALL DIMENSIONS SHOWN ARE CENTER TO CENTER
9. HIGH TEMPERATURE HEADS ARE TO BE FIELD LOCATED WHERE REQUIRED
10. PROVIDE ON SPARE HEAD CABINET WITH HEADS & 1" HEAD WRENCH
11. HANGERS ARE TO BE U.L. LISTED AND I.M. APPROVED
12. ELECTRICAL WIRING, ALARM, DETECTION AND SUPERVISORY BY OWNER
13. OWNER'S RESPONSIBILITY TO PROVIDE ADEQUATE HEATING TO PREVENT WET SYSTEM PIPING FROM FREEZING.

NO	REVISIONS	DATE	APPROVAL STAMPS

Drawing Title: **FIRE PROTECTION PLAN**

THE CHURCH IN THE PINES
3992 MN-27 WEST
ALEXANDRIA, MN 56308

Contract No: **C23-79**
Drawing Date: 3/6/2024
Scale: 1/8" = 1'-0"
Drawn By: OS
Approval By: STATE FIRE MARSHAL DIV.
SHEET NO. **FP 1 OF 1**