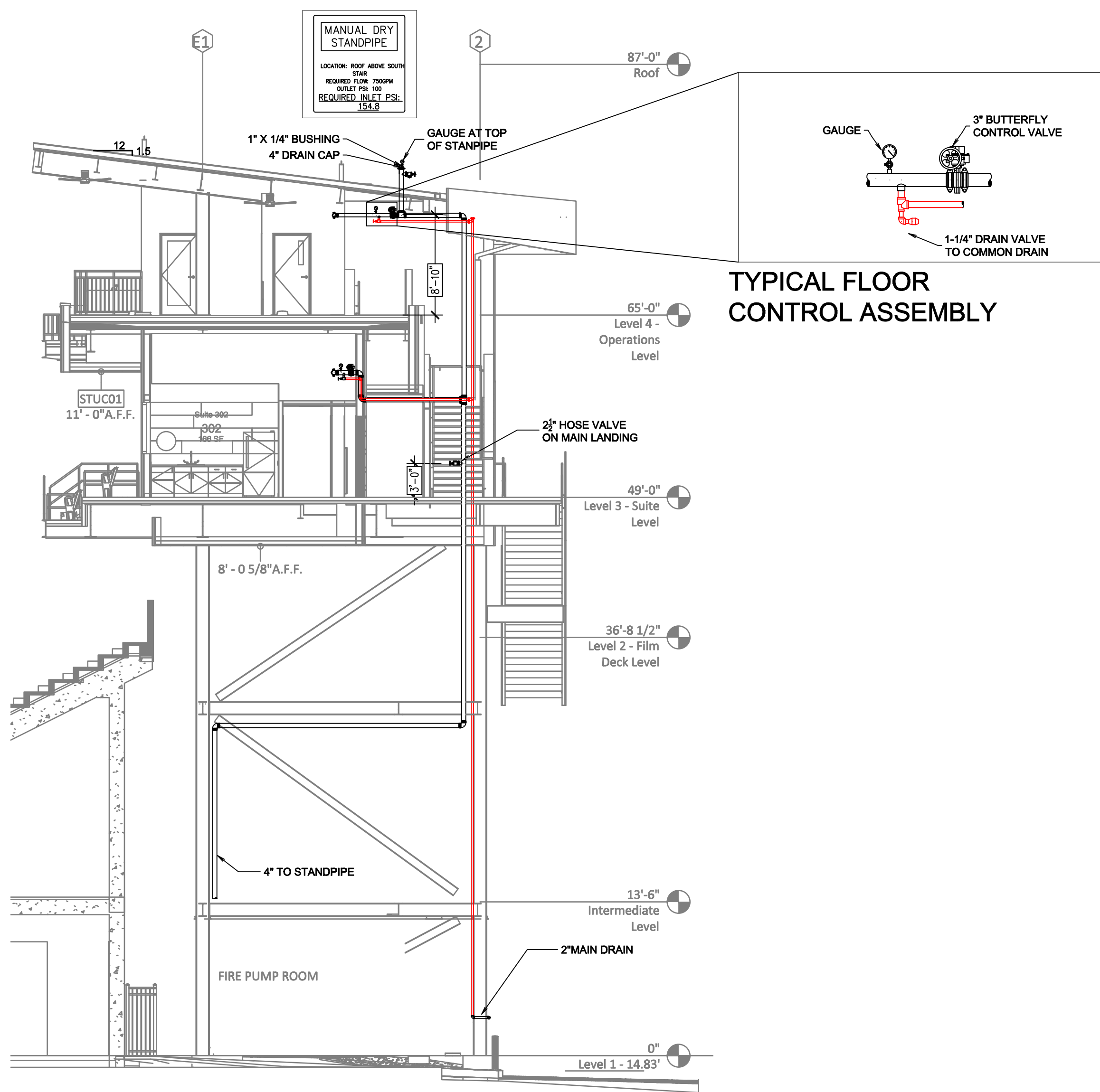


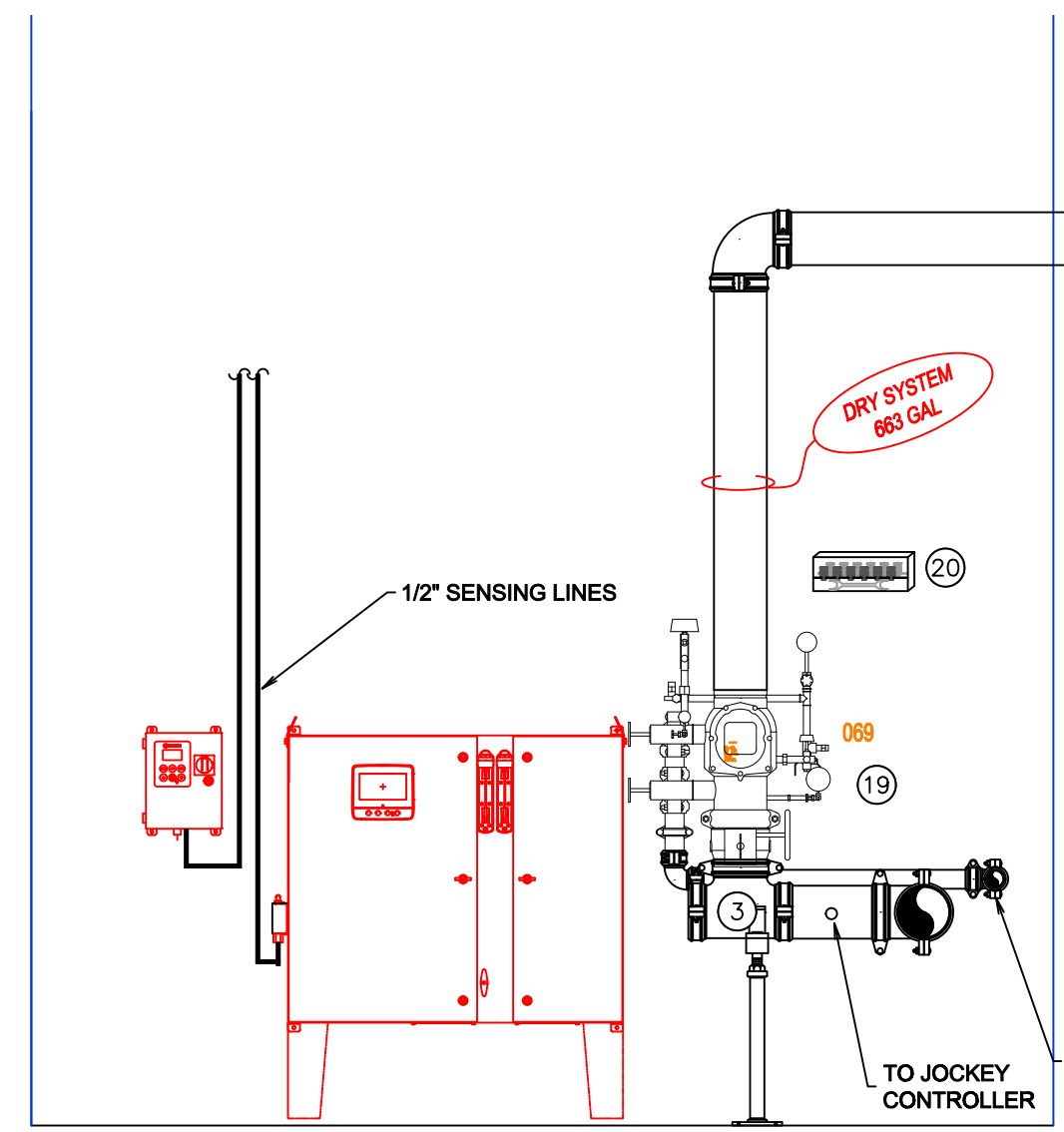
GENERAL NOTES

- INTERNATIONAL BUILDING CODE (2021)
 - OCCUPANCY/ASSEMBLY - STADIUM TYPE A-S;
 - TYPE OF CONSTRUCTION-A
 - SPRINKLERED AREAS (APPROXIMATE - SEE ARCHITECTURAL PLANS FOR ACTUAL)
 - LEVEL 1 = 1,882 S.F.
 - LEVEL 2 = 2,485 S.F.
 - LEVEL 3 = 8,112 S.F.
 - LEVEL 4 = 5,711
 - TOTAL = 18,111
 - INSTALLATION STANDARDS:
 - SPRINKLER SYSTEM DESIGNED AND INSTALLED PER NFPA-13, NFPA-14, NFPA-20 (2016)
- SPRINKLER PIPE TYPES:
 - DRY
 - 1" THROUGH 1 1/2" BRANCH LINES TO BE THREADED GALV SCHEDULE 40 WITH THREADED FITTINGS
 - 2" THROUGH 4" MAIN & BRANCH LINES TO BE GROOVED GALV SCHEDULE 40 WITH GROOVED (EXTERIOR FITTINGS TO BE GALVANIZED)
 - 6" AND GREATER PIPING TO BE ROLL-GROOVED GALV SCHEDULE 10 PIPING WITH GROOVED FITTINGS
- DESIGN CRITERIA
 - SUITES, CORRIDORS, RESTROOMS AND STAIRWAYS TO BE LIGHT HAZARD AREAS
 - MECHANICAL ROOMS, ELECTRICAL ROOMS, FIRE PUMP ROOM AND SIMILAR TO BE ORDINARY HAZARD GROUP 1
 - STORAGE AREAS TO BE ORDINARY HAZARD GROUP 2
- NOTES:
 - ALL MATERIAL TO BE NEW AND MEET U.L. STANDARDS
 - HANGERS TO BE INSTALLED IN ACCORDANCE WITH NFPA 13 (2016) - SEE PLAN FOR HANGING REQ.
 - DRY SYSTEM PIPE SLOPE, INSTALLATION:
 - SPRINKLER MAINS TO BE 1/4" PER 10 FEET
 - SPRINKLER BRANCH LINES TO BE 1/2" PER 10 FEET
 - 4.4.1. DRY SYSTEM CAPACITY
 - 683 GAL
- SYMBOLS USED ON DRAWINGS:
 - 10' 0" PIPE ELEVATION A.F.F.
 - 12' 0" PIPE ELEVATION BELOW B.O.D
 - ROOM HAZARD CLASSIFICATION (ALL ROOMS ARE CONSIDERED LIGHT HAZARD UNLESS NOTED)
 - HYDRAULIC CALCULATION JUNCTION POINT
 - 10' 0" CEILING HEIGHT
- SCOPE OF WORK:
 - TO INSTALL A NEW DRY SPRINKLER AND DRY STANDPIPE SYSTEM. A MANUAL DRY STANDPIPE IS TO BE INSTALLED IN BOTH EXIT STAIRWAYS. PIPING TO EACH FLOOR TO BE FED FROM STANDPIPES.
 - ALL AREAS OF THE BUILDING TO BE INSTALLED AND COVERED IN ACCORDANCE WITH THE LOCAL AUTHORITY HAVING JURISDICTION AND PER NFPA 13 (2016)

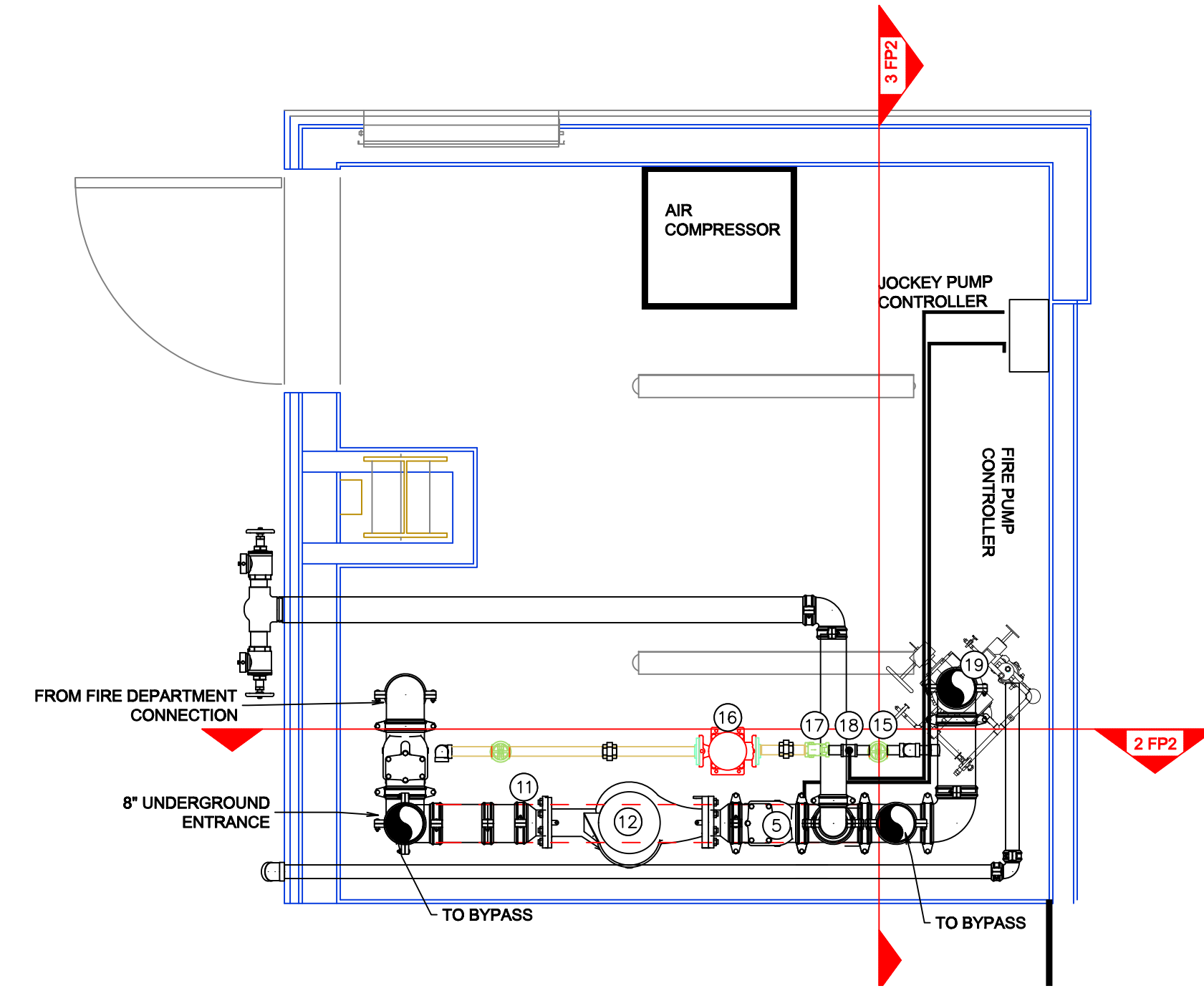


TYPICAL FLOOR CONTROL ASSEMBLY

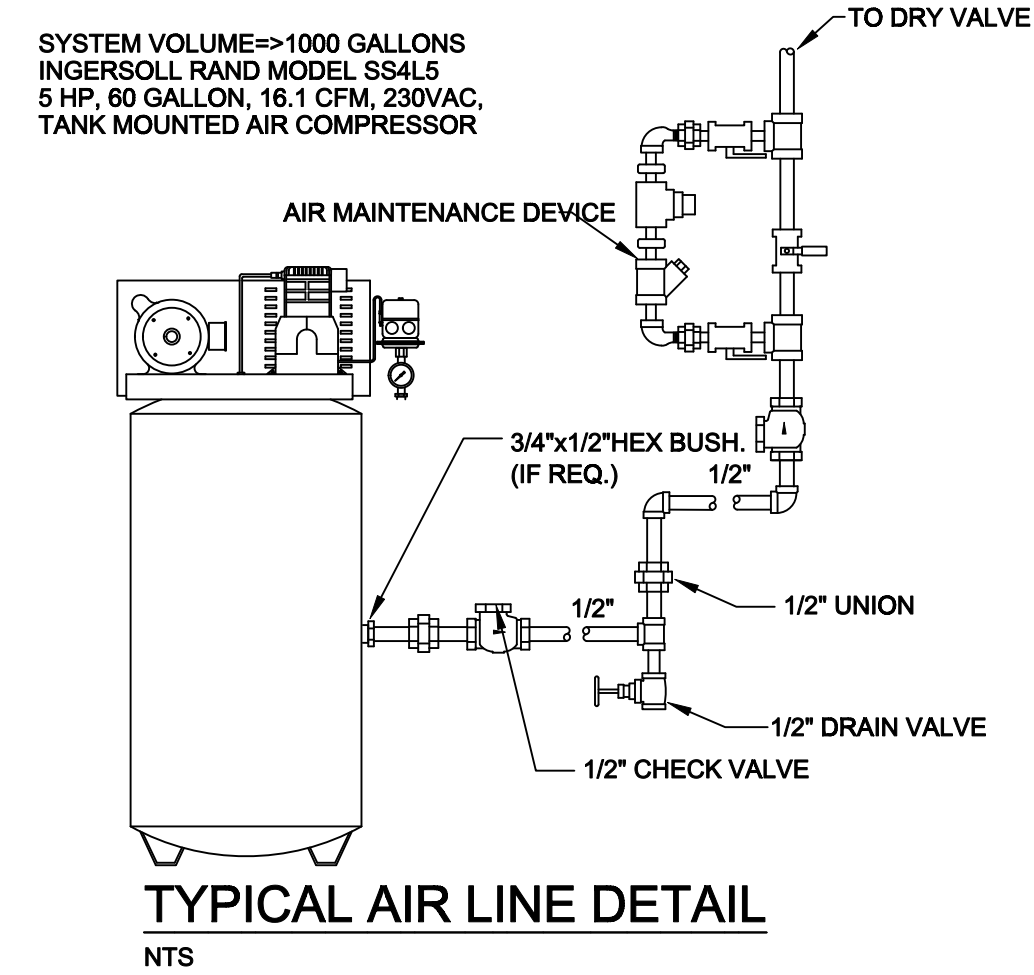
A STAIR SECTION
SCALE: 1/8"=1'-0"



3 FIRE PUMP DETAILS
SCALE: 1/2"=1'-0"

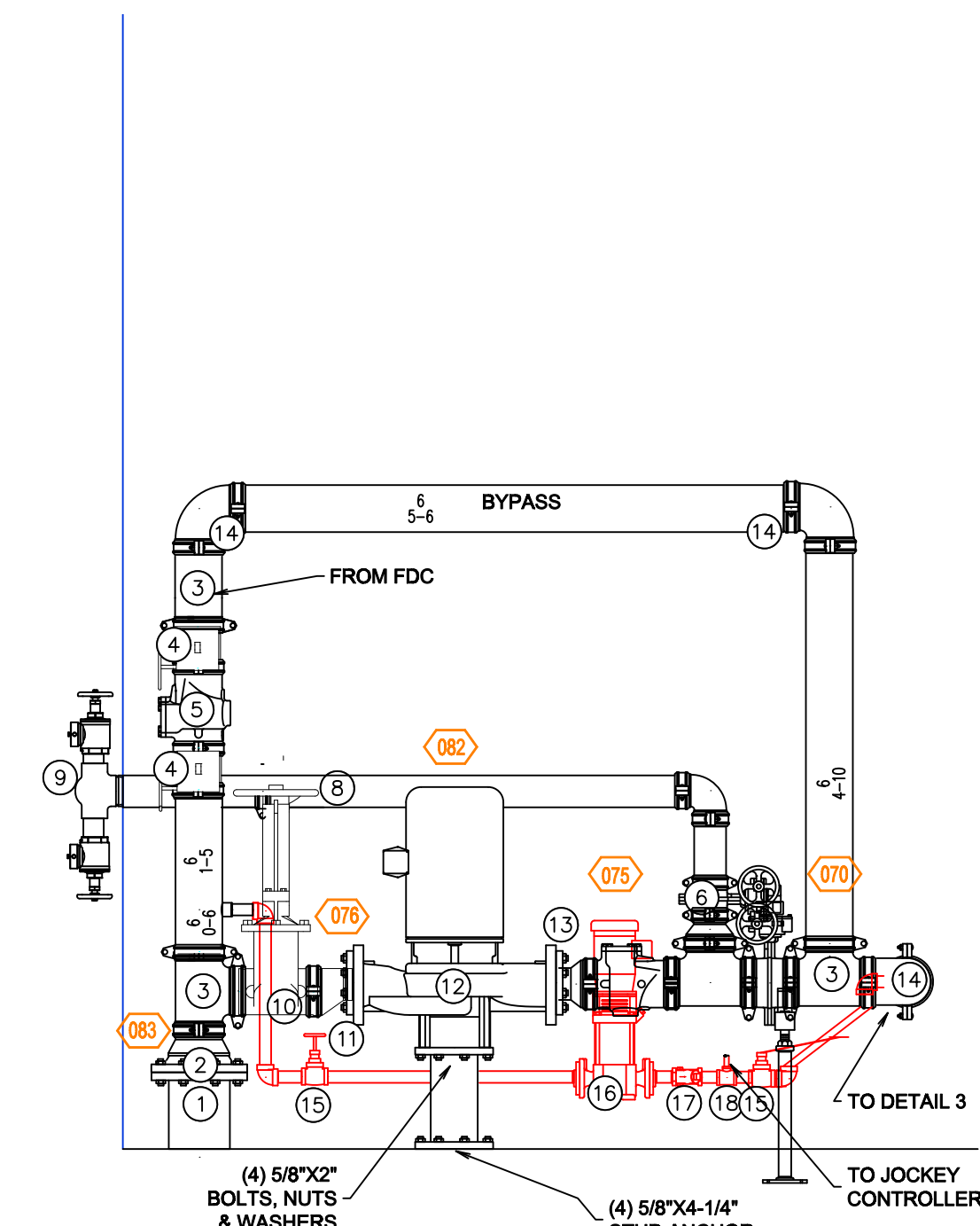


1 FIRE PUMP DETAILS (PLAN VIEW)
SCALE: 1/2"=1'-0"

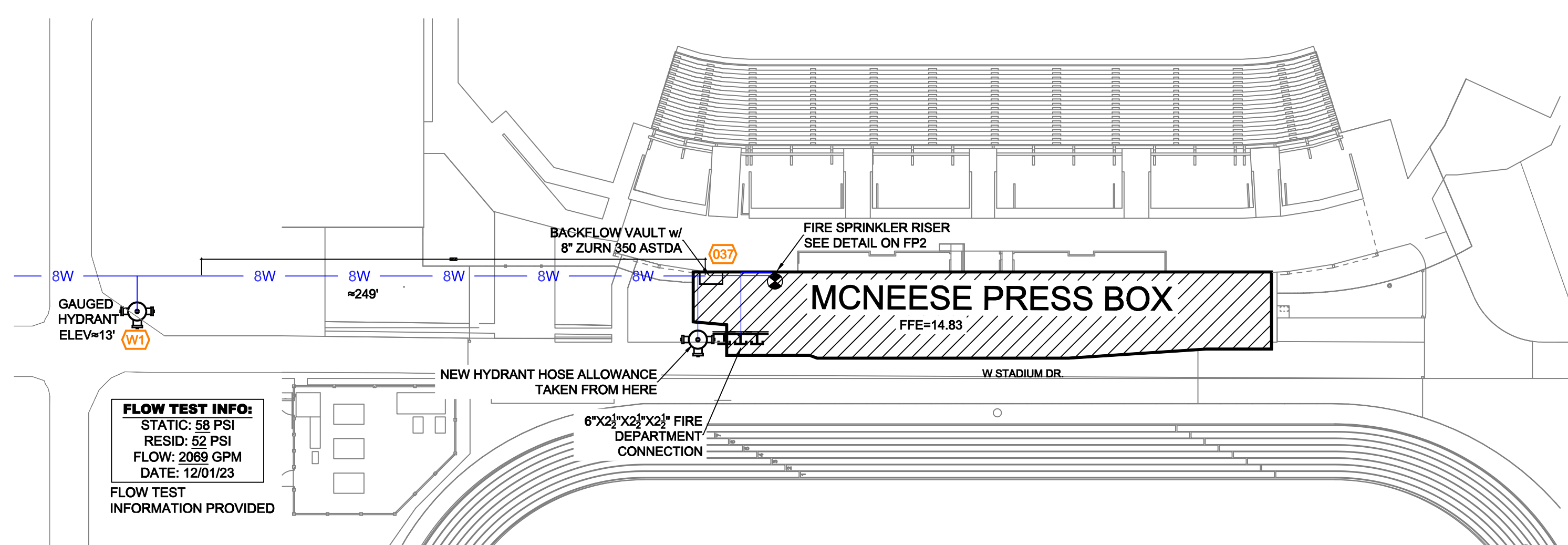
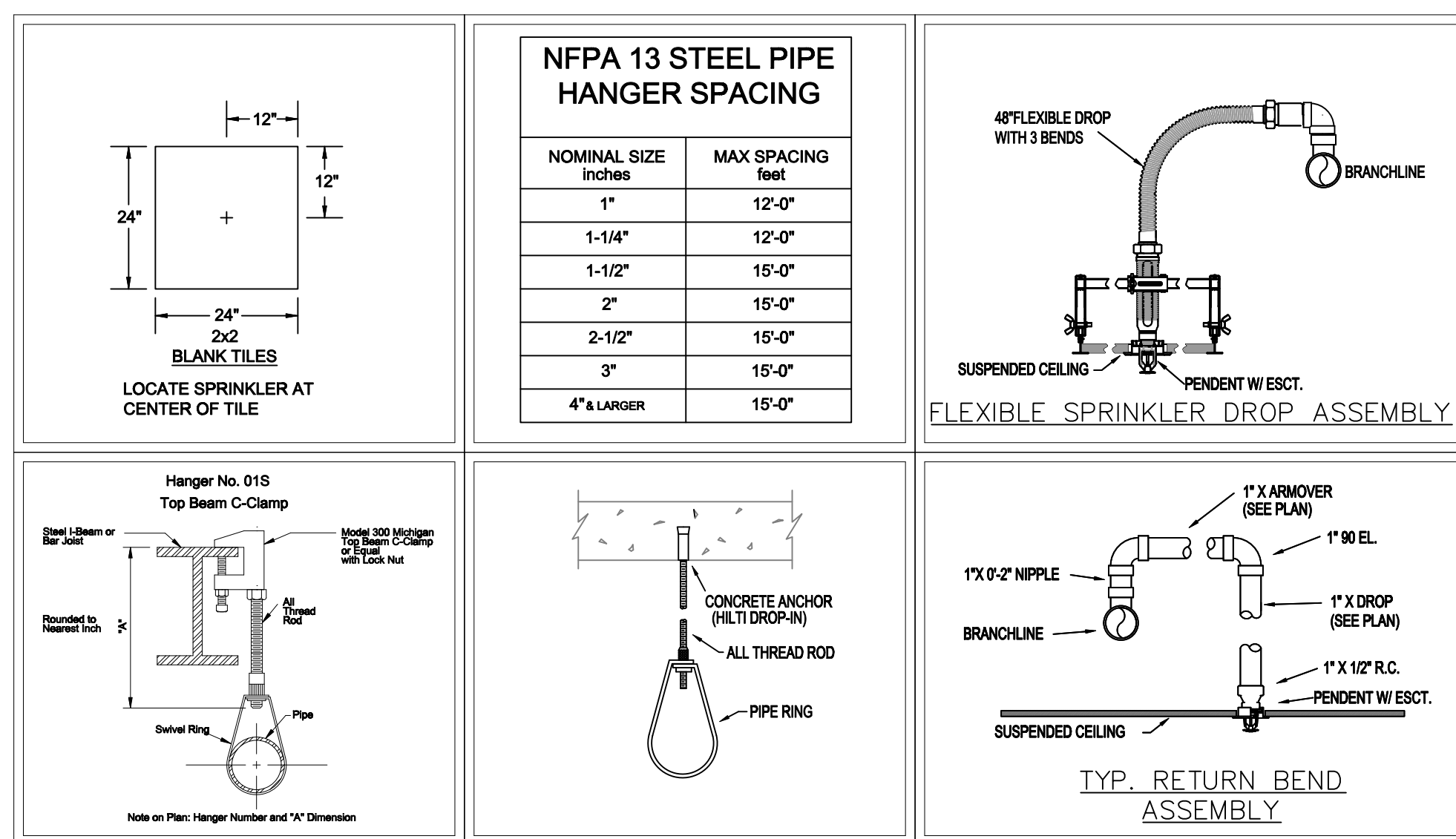


TYPICAL AIR LINE DETAIL
NTS

- RISER LEGEND**
- 8" UNDERGROUND WATER SERVICE (BY OTHERS) (FLUSHING & TESTING OF THE UNDERGROUND SHALL BE COMPLETED PRIOR TO THE SPRINKLER SYSTEM HOOKUP. UNDERGROUND PAPERS ARE TO BE SUPPLIED TO THE "FP" CONTRACTOR BY THE G.C.)
 - 8" CP CONCENTRIC REDUCER
 - 6" GROOVED TEE
 - 6" GROOVED BUTTERFLY VALVE W/ TAMPER (NORMALLY OPEN)
 - 6" GROOVED CHECK VALVE
 - 4" GROOVED BUTTERFLY VALVE W/ TAMPER (NORMALLY CLOSED)
 - 4" GROOVED 90 ELBOW
 - 4" GROOVED DRAIN 90 W/ 1"x1/2" BUSHING, 1/2" THREADED STREET 90, 1/2" BALL DRIP
 - 4" TEST HEADER W/ 2 1/2" HOSE VALVES
 - 6" OS&Y VALVE W/ TAMPER
 - 6" X 4" GROOVED ECCENTRIC REDUCER #51
 - 600 GPM FIRE PUMP @120 PSI MODEL DCS1, 400V
 - 4" X 6" GROOVED CONCENTRIC INCREASER #50
 - 6" GROOVED 90
 - 1" GLOBE VALVE
 - 1 HP JOCKEY PUMP MODEL 56C 200V-600V
 - 1" CHECK VALVE
 - 1 1/2" X 1 1/2" THREADED REDUCING TEE
 - 6" VICTAULIC 788N DRY VALVE W/ ACCELERATOR AND TRIM
 - HEADBOX W/ SPARE HEADS AND HEADWRENCH



2 FIRE PUMP DETAILS
SCALE: 1/2"=1'-0"



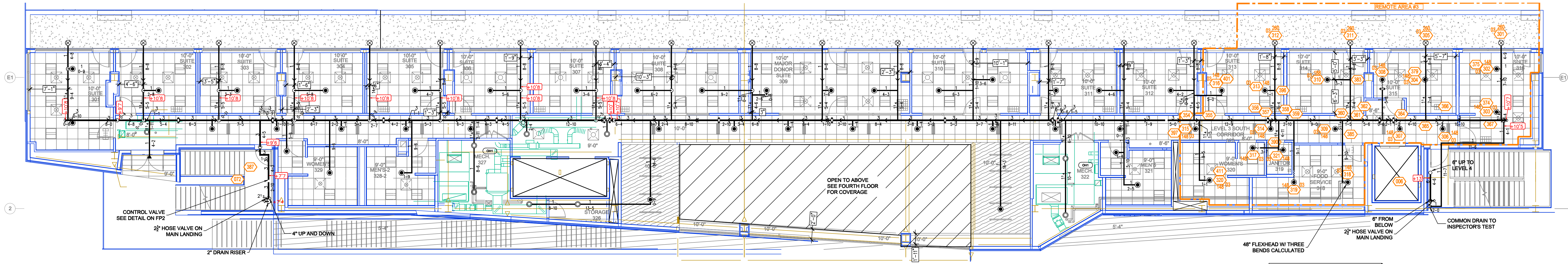
SITE PLAN
SCALE: 1"=50'-0"

APPROVAL ONLY

**COWBOY STADIUM PRESS BOX
FIRE PROTECTION**
700 E MCNEESE STREET
LAKE CHARLES, LA 70607

Sheet Title: SYSTEM #1
Sheet No: **FP2**
Sequence: 2 OF 4

#	DATE	BY	SUBMITTAL	REVISION TABLE	DESCRIPTION
0	1/22/2024	JAM			



THIRD FLOOR FIRE PROTECTION PLAN
SCALE: 1/8"=1'-0" F.F.E.= 49'-0" T.O.S.= 64'-6 1/2"

SYM	QTY	POSITION	FINISH	TEMP	K	NPT	SIN	MFG.	MODEL#	ESCUTCHEON
16	PENDENT	WHITE	156	5.80	1/2"	V3802	VICTAULIC	V38	CONCEALED	
20	UPRIGHT	VC-250	200	5.80	1/2"	V2704	VICTAULIC	V27	N/A	
9	SPRIG	BRASS	200	5.80	1/2"	V2704	VICTAULIC	V27	N/A	
11	SIDEWALL	BRASS	200	5.80	1/2"	V2710	VICTAULIC	V27	SEMI-RECESSED	

THIRD FLOOR HEAD LEGEND

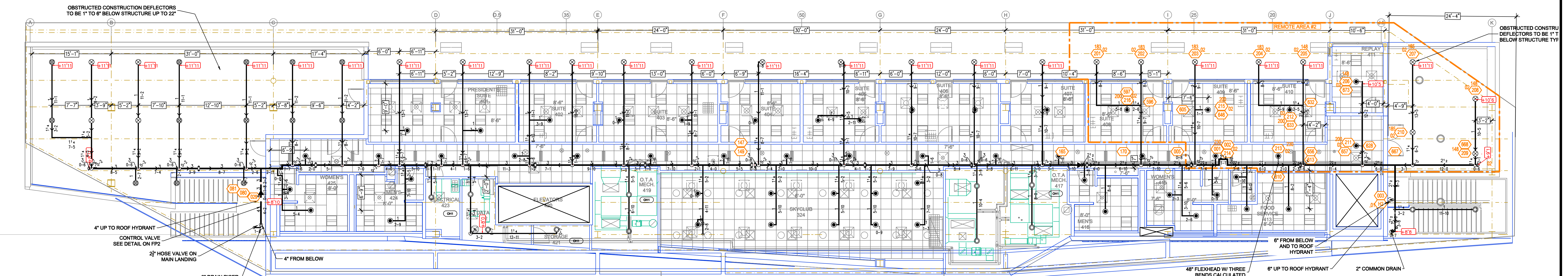
SYM	QTY	POSITION	FINISH	TEMP	K	NPT	SIN	MFG.	MODEL#	ESCUTCHEON
53	PENDENT	WHITE	156	5.80	1/2"	V3802	VICTAULIC	V38	CONCEALED	
25	UPRIGHT	VC-250	200	5.80	1/2"	V2704	VICTAULIC	V27	N/A	
12	UPRIGHT	BRASS	200	5.80	1/2"	V2704	VICTAULIC	V27	N/A	
13	UPRIGHT	VC-250	200	5.80	1/2"	V2704	VICTAULIC	V27	SEMI-RECESSED	

FOURTH FLOOR HEAD LEGEND

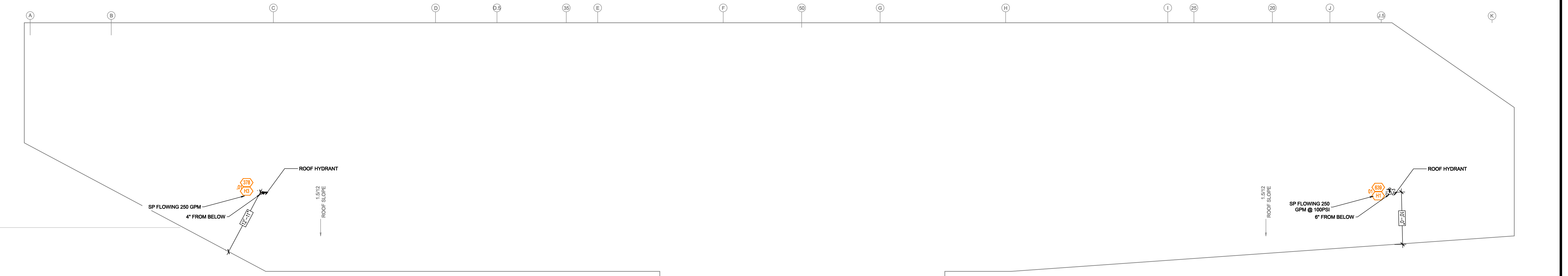
Design Area #3 HAZARD: LH
Zone: 1 System Type: DRY
Location: 3RD FLOOR
1
Flowing Outlets: 21
Density: 0.10 Remote Area: 1960
Flow: 573 gpm @ 28.5 psi
Calculation Safety: 28.5 psi
Includes 100 gpm Hose allowance

Design Area #2 HAZARD: LH
Zone: 1 System Type: DRY
Location: 4TH FLOOR
1
Flowing Outlets: 16
Density: 0.10 Remote Area: 2024
Flow: 519.6 gpm @ 28.6 psi
Calculation Safety: 28.6 psi
Includes 100 gpm Hose allowance

CALC PLACARD



FOURTH FLOOR FIRE PROTECTION PLAN
SCALE: 1/8"=1'-0" F.F.E.= 65'-0" T.O.S.= 77'-8 1/16"



ROOF FIRE PROTECTION PLAN
SCALE: 1/8"=1'-0"

NFPA 13 STEEL PIPE HANGER SPACING

NOMINAL SIZE	MAX SPACING
1"	12'-0"
1-1/4"	12'-0"
1-1/2"	15'-0"
2"	15'-0"
2-1/2"	15'-0"
3"	15'-0"
4" & LARGER	15'-0"

FLEXIBLE SPRINKLER DROP ASSEMBLY

TYP. RETURN BEND ASSEMBLY

SYM	QTY	POSITION	FINISH	TEMP	K	NPT	SIN	MFG.	MODEL#	ESCUTCHEON
21	SPRIG	BRASS	200	5.80	1/2"	V2704	VICTAULIC	V27	N/A	
147	PENDENT	WHITE	200	5.80	1/2"	V3808	VICTAULIC	V27	CONCEALED	
17	UPRIGHT	BRASS	200	5.80	1/2"	V2704	VICTAULIC	V27	N/A	
45	UPRIGHT	VC-250	200	5.80	1/2"	V2704	VICTAULIC	V27	N/A	
1	SIDEWALL	BRASS	200	5.80	1/2"	V2710	VICTAULIC	V27	SEMI-RECESSED	
13	UPRIGHT	BRASS	200	5.80	1/2"	V2704	VICTAULIC	V27	N/A	
7	PENDENT	WHITE	200	5.80	1"	V3902	VICTAULIC	V39	CONCEALED	
251 TOTAL										

REVISION	TABLE	DESCRIPTION
0	AM	SUBMITTAL

#	DATE	BY	DESCRIPTION

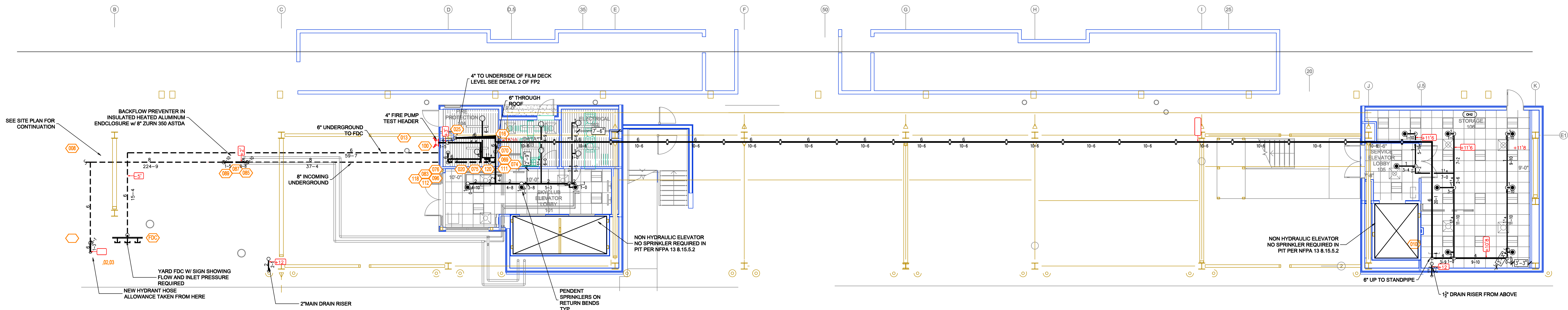
**MCNEESE PRESS BOX
FIRE PROTECTION**
700 E MCNEESE STREET
LAKE CHARLES, LA 70607

Project Title:
FIRE SPRINKLER PLAN

Sheet No:
FP4

Sequence:
4 OF 4

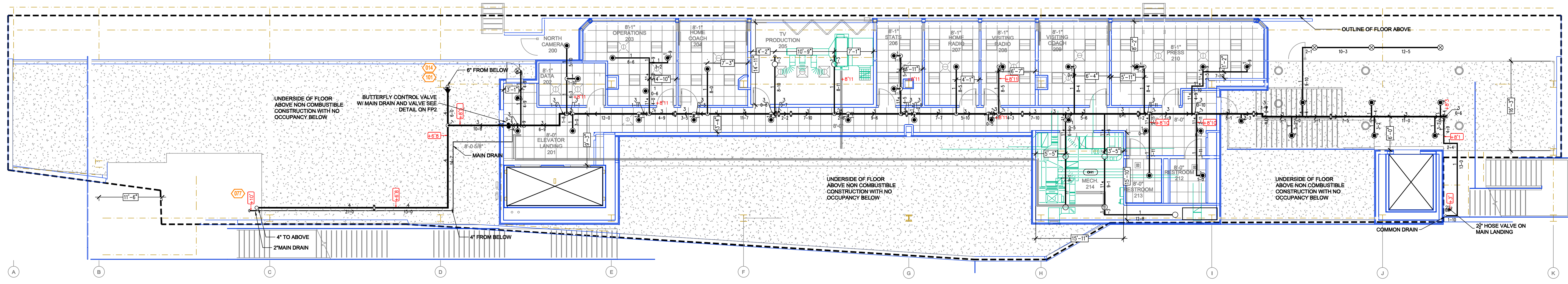
APPROVAL ONLY



FIRST FLOOR FIRE PROTECTION PLAN
SCALE: 1/8"=1'-0" F.F.E.=0

SYM	CNT	POSITION	FINISH	TEMP	K	NPT	SN	MFG.	MODEL#	ESCUTCHEON
⊙	11	PENDENT	WHITE	155	5.80	1/2"	V3802	VICTALIC	V38	CONCEALED
○	17	UPRIGHT	BRASS	200	5.80	1/2"	V2704	VICTALIC	V27	NA

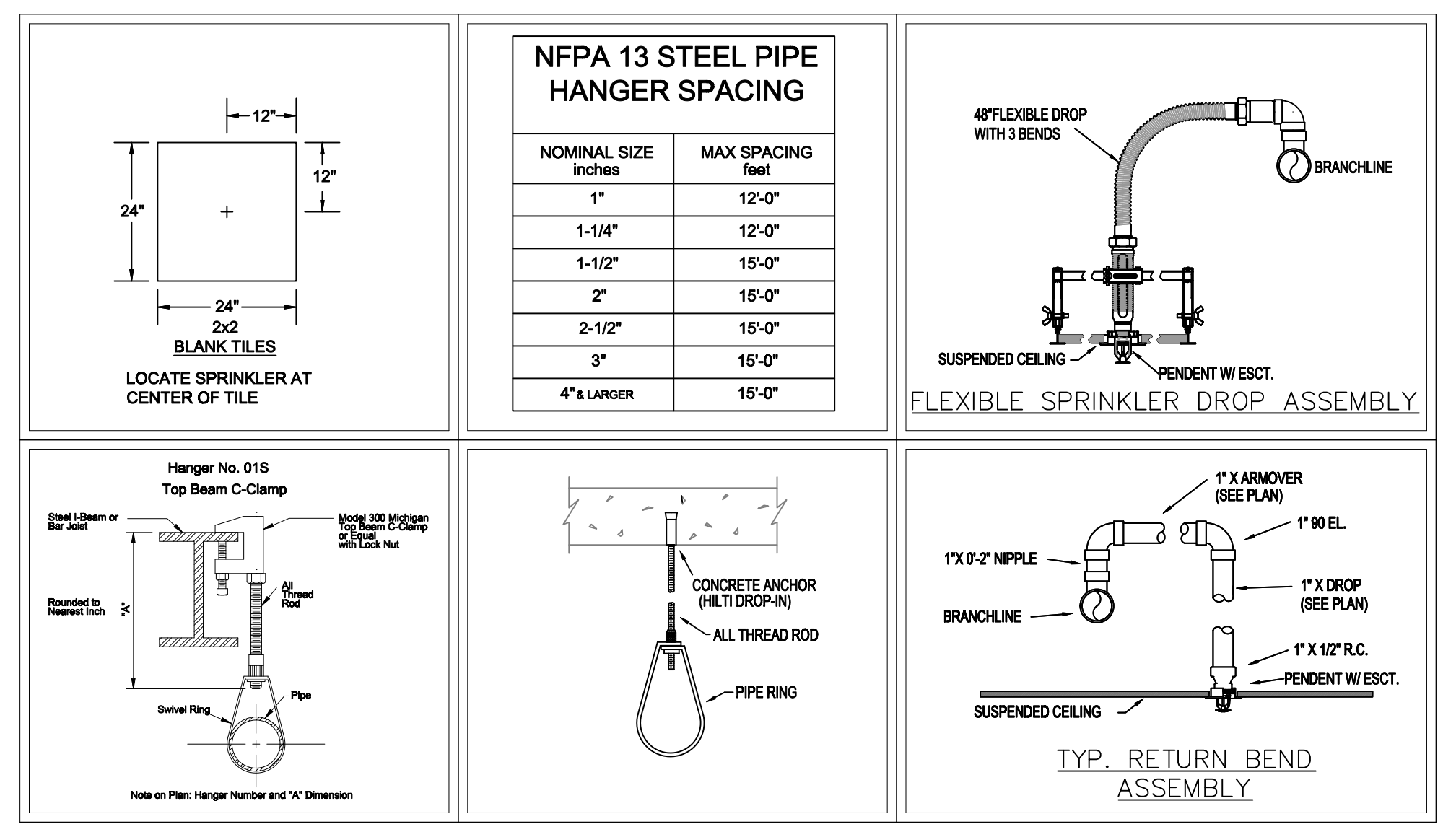
FIRST FLOOR HEAD LEGEND



SECOND FLOOR FIRE PROTECTION PLAN
SCALE: 1/8"=1'-0" F.F.E.=36'-8 1/2" T.O.S.=48'-5 1/2"

SYM	CNT	POSITION	FINISH	TEMP	K	NPT	SN	MFG.	MODEL#	ESCUTCHEON
⊙	28	PENDENT	WHITE	155	5.80	1/2"	V3802	VICTALIC	V38	CONCEALED
○	7	UPRIGHT	BRASS	200	5.80	1/2"	V2704	VICTALIC	V27	NA
⊙	7	PENDENT	WHITE	155	5.80	1"	V3302	VICTALIC	V33	CONCEALED
○	4	UPRIGHT	VC-200	200	5.80	1/2"	V2704	VICTALIC	V27	NA

SECOND FLOOR HEAD LEGEND



#	DATE	BY	DESCRIPTION
0	1/22/2024	JAM	SUBMITTAL

**COWBOY STADIUM PRESS BOX
FIRE PROTECTION**
700 E MCNEESE STREET
LAKE CHARLES, LA 70607

APPROVAL ONLY