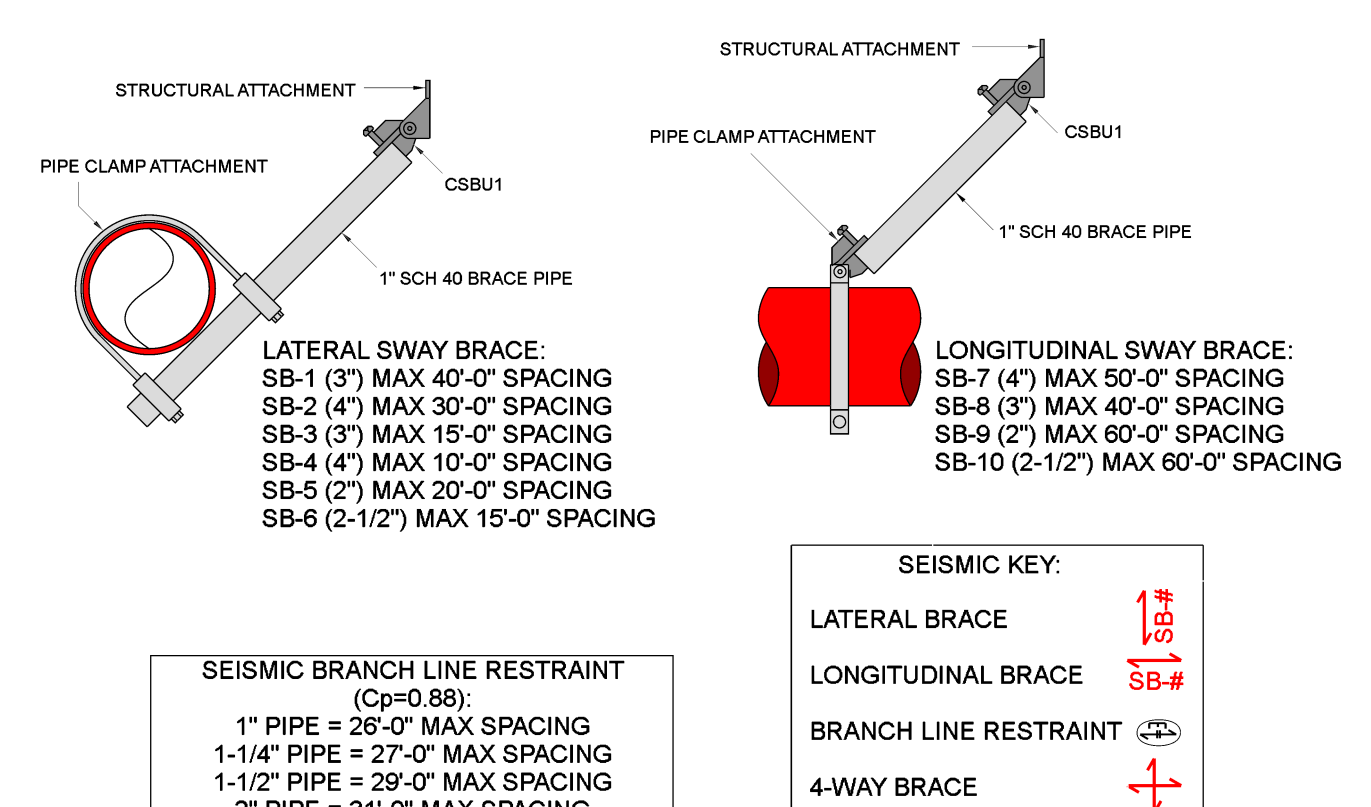
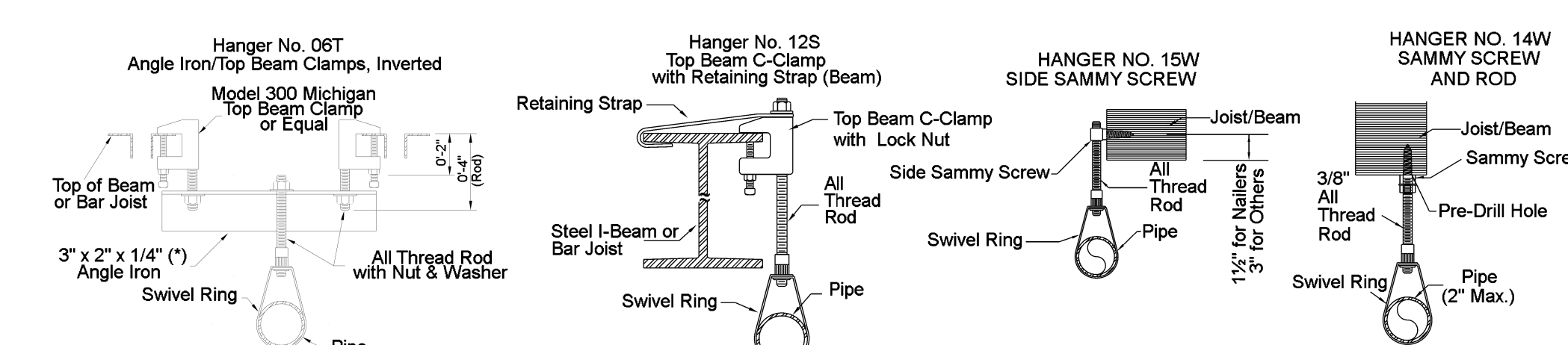
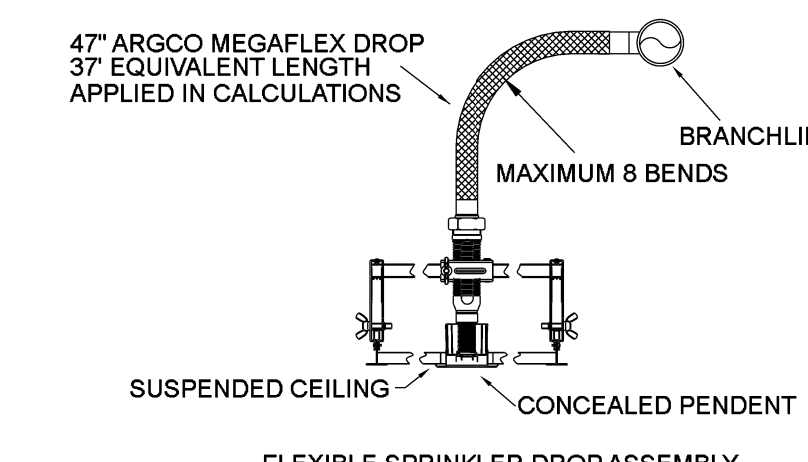


GENERAL INFORMATION

- INTERNATIONAL BUILDING CODE (2018)
 - OCCUPANCY: TYPE B
 - TYPE OF CONSTRUCTION: V-B
 - SPRINKLERED AREAS (APPROXIMATE - SEE ARCHITECTURAL PLANS FOR ACTUAL)
 - ZONE 1 (WET) = 7,413 S.F.
 - ZONE 2 (DRY) = 4,483 S.F.
 - DESIGN & INSTALLATION STANDARDS: NFPA-13 (2019)
 - AUTHORITY HAVING JURISDICTION (AHJ): CITY OF RENO FIRE MARSHAL
- SPRINKLER PIPE TYPES:
 - WET-
 - 1" PIPE TO BE SCHEDULE 40 BLACK STEEL W/ THREADED FITTINGS
 - 1-1/4" THROUGH 4" MAINS & BRANCH LINES TO BE BLK SCHEDULE 10 W/ GROOVED FITTINGS
 - MAINS & BRANCH LINES TO BE ROLL-GROOVED BLK SCHEDULE 10
 - 2" AND LARGER TO USE GROOVED SHORT RADIUS FITTINGS
 - DRY-
 - 1" PIPE TO BE SCHEDULE 40 BLACK STEEL W/ THREADED FITTINGS
 - 1-1/4" THROUGH 4" MAINS & BRANCH LINES TO BE BLK SCHEDULE 10 W/ GROOVED FITTINGS
 - MAINS & BRANCH LINES TO BE ROLL-GROOVED BLK SCHEDULE 10
 - 2" AND LARGER TO USE GROOVED SHORT RADIUS FITTINGS
- DESIGN CRITERIA:
 - LIGHT HAZARD AREAS INCLUDE OFFICE/ADMINISTRATIVE, RESTROOMS, AND CORRIDORS
 - ORDINARY HAZARD GROUP I AREAS INCLUDE MECHANICAL AND ELECTRICAL ROOMS
 - REMOTE AREA REDUCTIONS HAVE BEEN TAKEN WHERE APPLICABLE PER NFPA 13 SEC. 19.3.3.2.3
 - REMOTE AREA INCREASED BY 30% FOR SLOPED CEILINGS PER NFPA 13 SEC. 19.3.3.2.4
 - REMOTE AREA INCREASED BY 30% FOR DRY AND DOUBLE INTERLOCK PREACTION SYSTEMS PER NFPA 13 SEC. 19.3.3.2.5
- NOTES:
 - ALL MATERIAL TO BE NEW AND MEET U.L. STANDARDS
 - HANGERS TO BE INSTALLED IN ACCORDANCE WITH NFPA 13 AND ENGINEER DETAILS - SEE PLAN FOR HANGING REQUIREMENTS
 - CONCRETE WEDGE ANCHORS FOR SEISMIC SHALL BE PLACED IN CMU WALL WITH GROUTED
 - DRY SYSTEM REQUIREMENTS:
 - DRY SYSTEM PIPE SLOPE INSTALLATION
 - SPRINKLER MAINS TO BE 1/4" PER 10'-0"
 - SPRINKLER BRANCH LINES TO BE 1/2" PER 10'-0"
 - DRY SYSTEM CAPACITY
 - 187 GALLONS
 - ALL PIPING CONCEALED ABOVE CEILING EXCEPT WHERE NOTED
- SYMBOLS USED ON DRAWINGS:
 - *x'x'FF' PIPE ELEVATION ABOVE FINISH FLOOR
 - *x'x'TS' PIPE ELEVATION BELOW TOP OF STEEL
 - (H) ROOM HAZARD CLASSIFICATION (ALL ROOMS ARE CONSIDERED LIGHT HAZARD U.N.O.)
 - (HY) HYDRAULIC CALCULATION JUNCTION POINT
 - 9'-0" CEILING HEIGHT
 - FIRE RATED WALL
 - WET BLACK STEEL PIPE
 - - - DRY BLACK STEEL PIPE
- SCOPE OF WORK:
 - INSTALL A COMPLETE ONE WET ZONE AND ONE DRY ZONE FIRE SPRINKLER SYSTEM TO COVER ALL AREAS OF BUILDING
 - ALL AREAS OF THE BUILDING TO BE INSTALLED AND COVERED IN ACCORDANCE WITH THE LOCAL AUTHORITY HAVING JURISDICTION AND PER NFPA 13



SEISMIC DETAILS



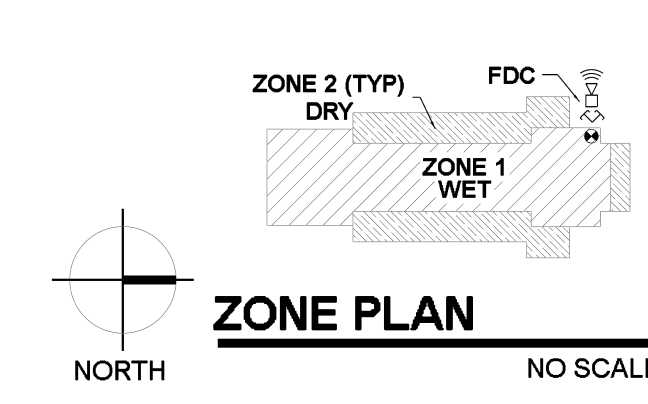
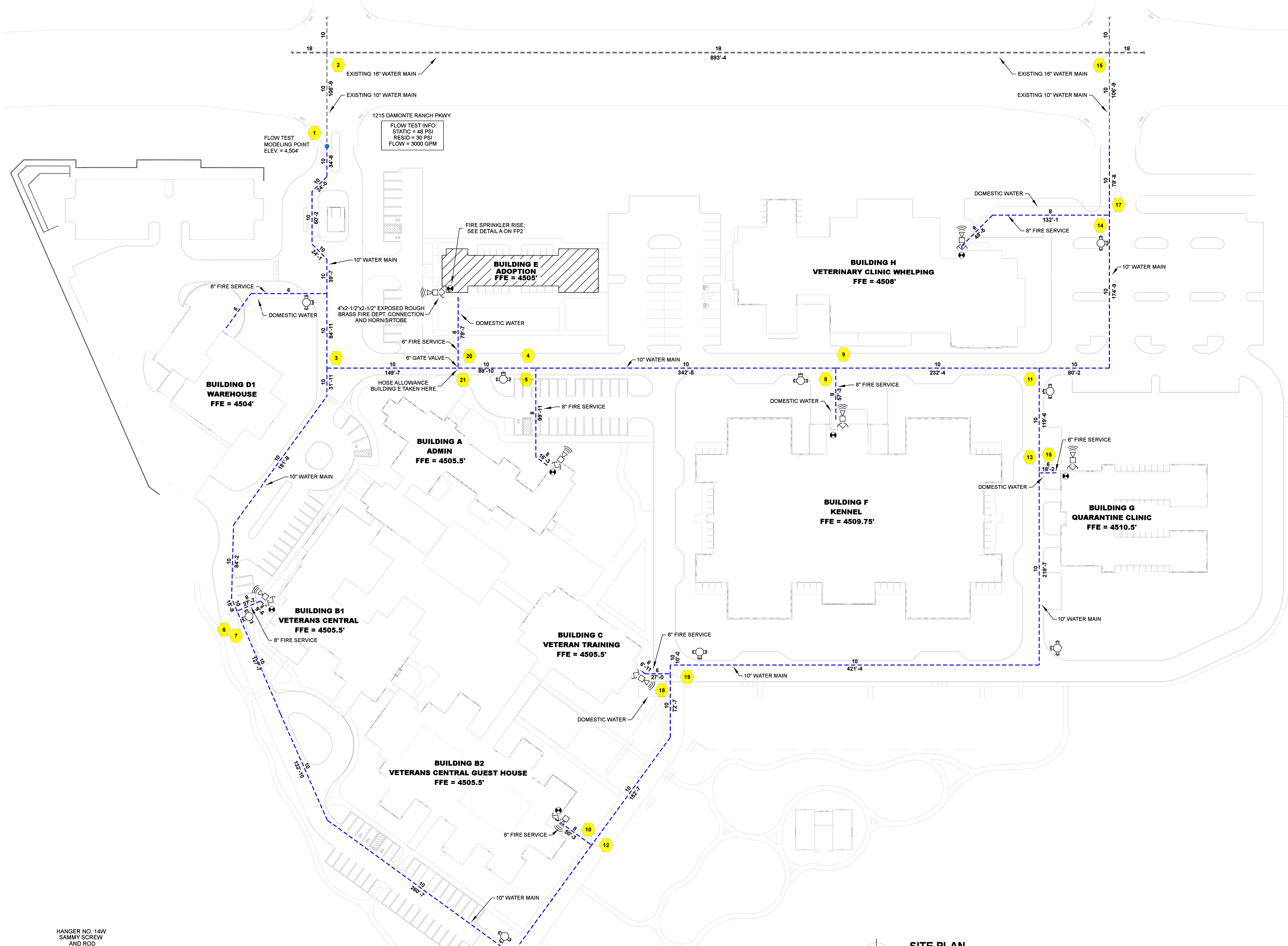
MAXIMUM DISTANCE BETWEEN HANGERS (FT.-IN.)

PIPE SIZE	3/4"	1"	1 1/4"	1 1/2"	2"	2 1/2"	3"	4"	6"	8"
STEEL PIPE EXCEPT THREADED LIGHTWALL	NA	12-0	12-0	15-0	15-0	15-0	15-0	15-0	15-0	15-0

HANGER DETAILS

Liberty Dogs - Adoption

Symbol	Manufacturer	SIN	Model	Quantity	K-Factor	Type	Size	Response	Finish	Temp	Note
●	Tyco	TY3531	Royal Flush II	81	5.6	Concealed Pendant	1/2"	Quick	Brass	200°F	WHITE PLATE CONCEALED
⊗	Tyco	TY3131	TY-FRB	121	5.6	Upright	1/2"	Quick	Natural Brass	200°F	N/A
⊕	Tyco	TY3335	DS-1	2	5.6	Horizontal Sidewall	1"	Quick	Chrome	200°F	DRY STANDARD
				Total = 204							



AIR VENT NOTE:
 AS STATED IN 16.7, AT THE DISCRETION OF THE INSTALLER, AUTOMATIC AIR VENTS ARE TO BE INSTALLED BY ONE OF THE FOLLOWING METHODS:
 (1) MANUAL VALVE, MIN 1/2"
 (2) AUTOMATIC AIR VENT
 (3) REMOTE INSPECTOR TEST VALVE
 (4) OTHER APPROVED MEANS

FIRE SPRINKLER PLANS

SITE PLAN/DETAILS

LIBERTY DOGS - ADOPTION
 1215 DAMONTE RANCH PKWY
 RENO, NV 89521
 APN 140-010-55

Sheet Title: _____
 Project: _____

DRAWN BY: MAS
 CHECKED BY: ADK
 DATE: 5/17/2024
 PROJECT NO.: _____

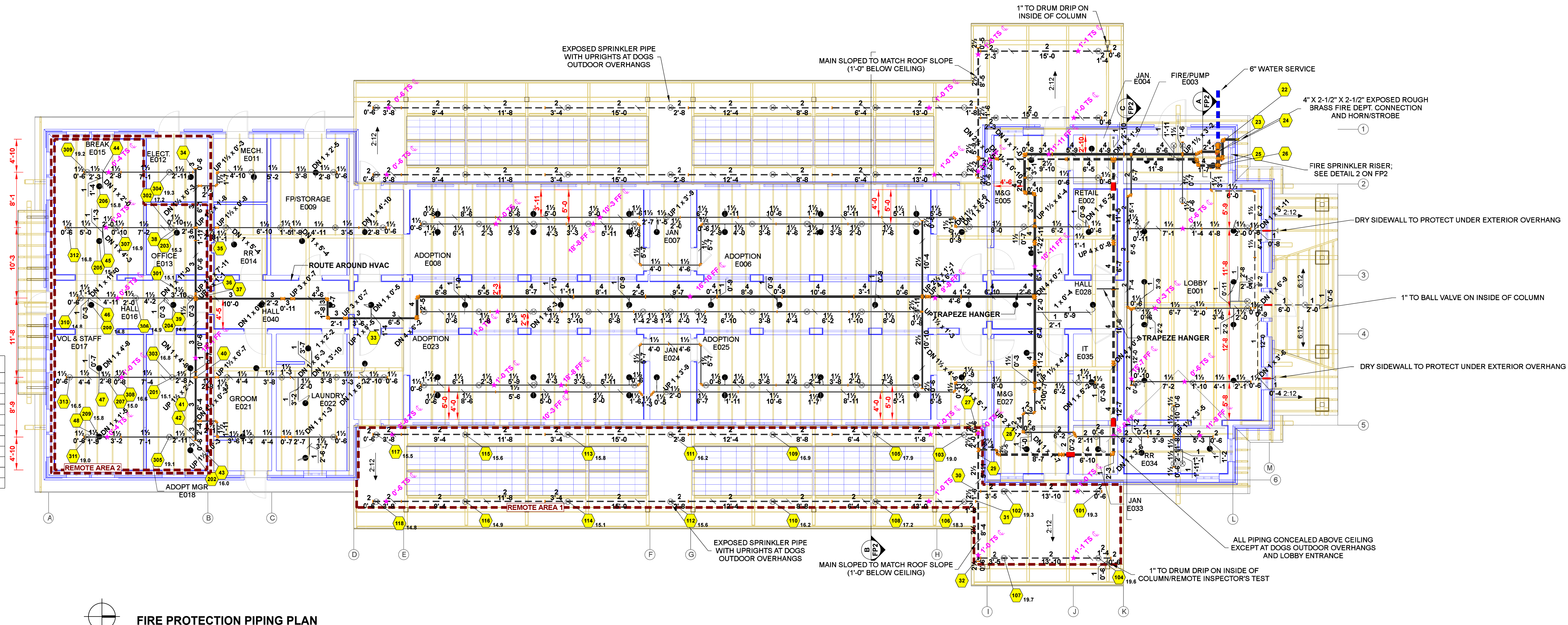
SCALE: AS NOTED

Sheet No: _____

FP1 of 5

PRINTED ON 06/21/24 AT 13:04:58 Liberty Dogs - Underground_Opening_CAS3.cad

AIR VENT NOTE:
 AS STATED IN 16.7:
 AT THE DISCRETION OF THE
 INSTALLER, AUTOMATIC AIR VENTS
 ARE TO BE INSTALLED BY ONE OF
 THE FOLLOWING METHODS
 (1) MANUAL VALVE, MIN 1/2"
 (2) AUTOMATIC AIR VENT
 (3) REMOTE INSPECTOR TEST VALVE
 (4) OTHER APPROVED MEANS

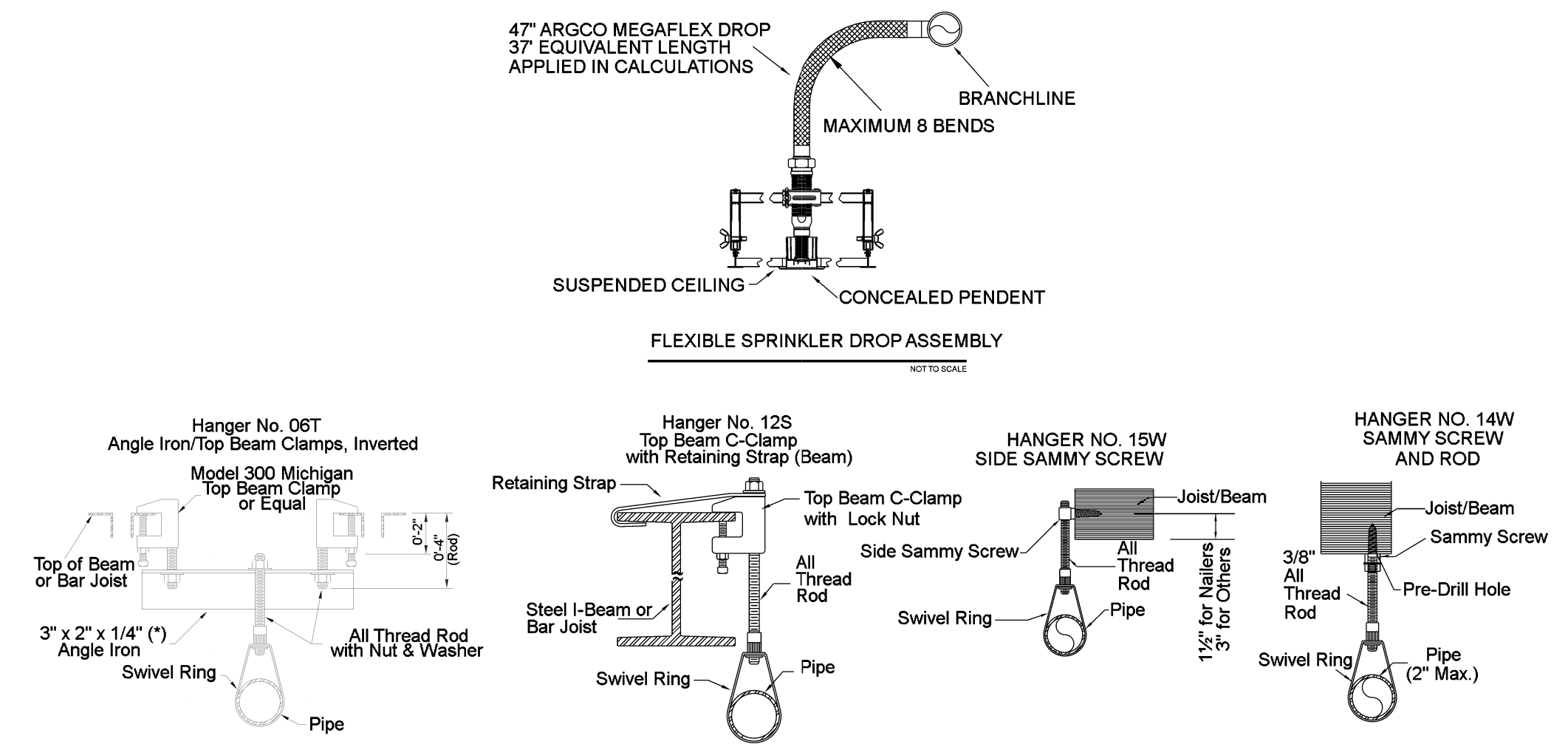


HALL E016
 Remote Area 2

OCCUPANCY CLASSIFICATION	Light Hazard
DENSITY (gpm/ft ²)	0.10 for 1500ft ² (Actual 990ft ²)
TOTAL HOSE STREAMS	100.0
TOTAL HEADS FLOWING	7
K-FACTOR	5.6
TOTAL WATER REQUIRED	208.0
TOTAL PRESSURE REQUIRED	21.6
BASE OF RISER (gpm)	108.0
BASE OF RISER (psi)	14.4
SAFETY MARGIN (psi)	+28.2 (64.8%)

NOTE:
 ROOM DESIGN METHOD

FIRE PROTECTION PIPING PLAN
 SCALE: 1/8" = 1'-0"



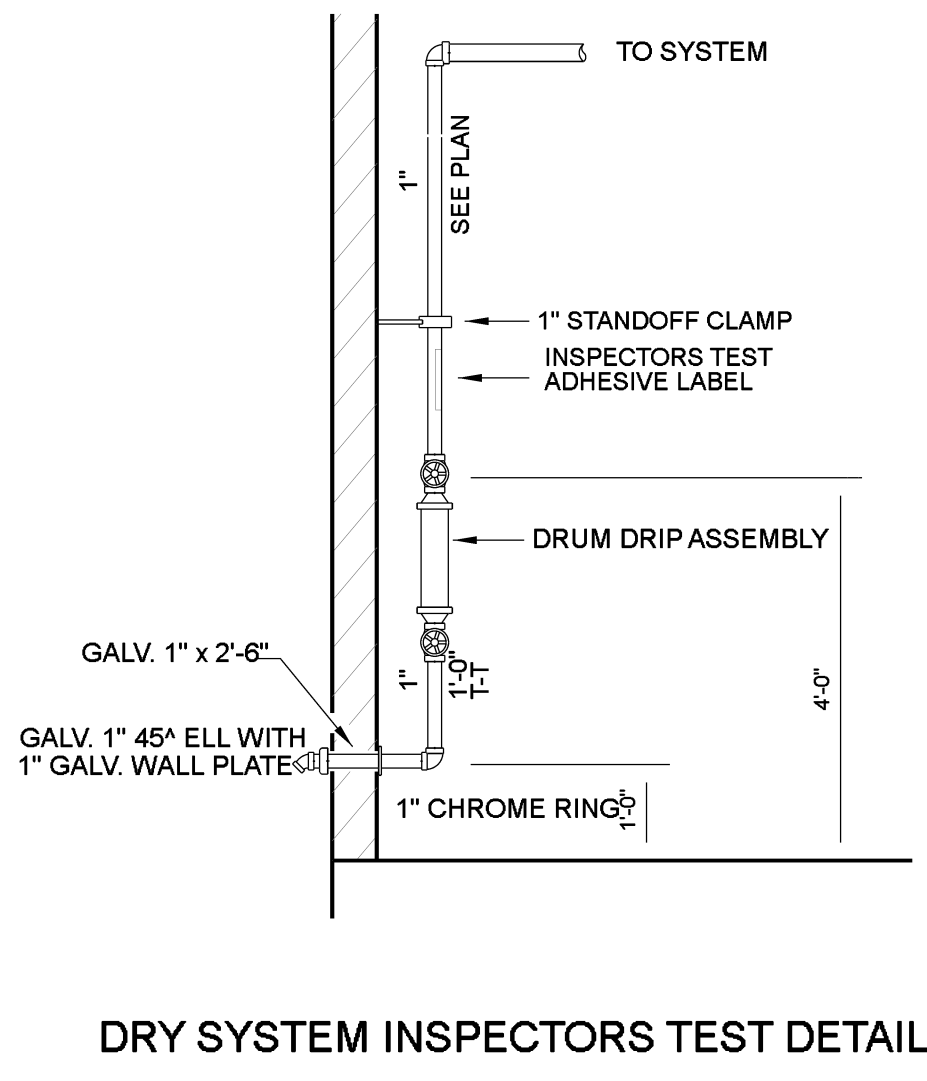
MAXIMUM DISTANCE BETWEEN HANGERS (FT.-IN.)

PIPE SIZE	3/4"	1"	1 1/4"	1 1/2"	2"	2 1/2"	3"	4"	6"	8"
STEEL PIPE EXCEPT THREADED LIGHTWALL	NA	12-0	12-0	15-0	15-0	15-0	15-0	15-0	15-0	15-0

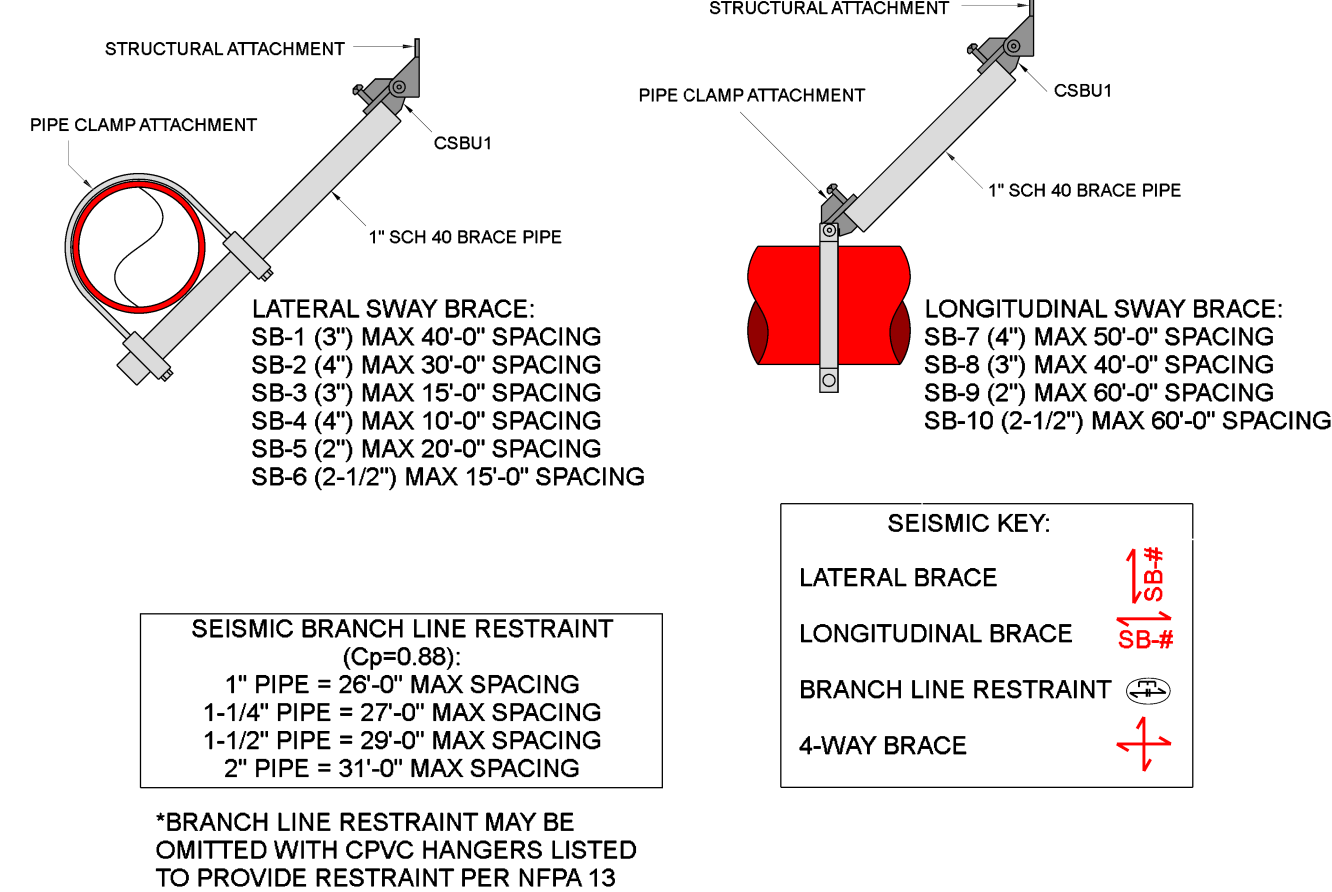
HANGER DETAILS

Liberty Dogs - Adoption

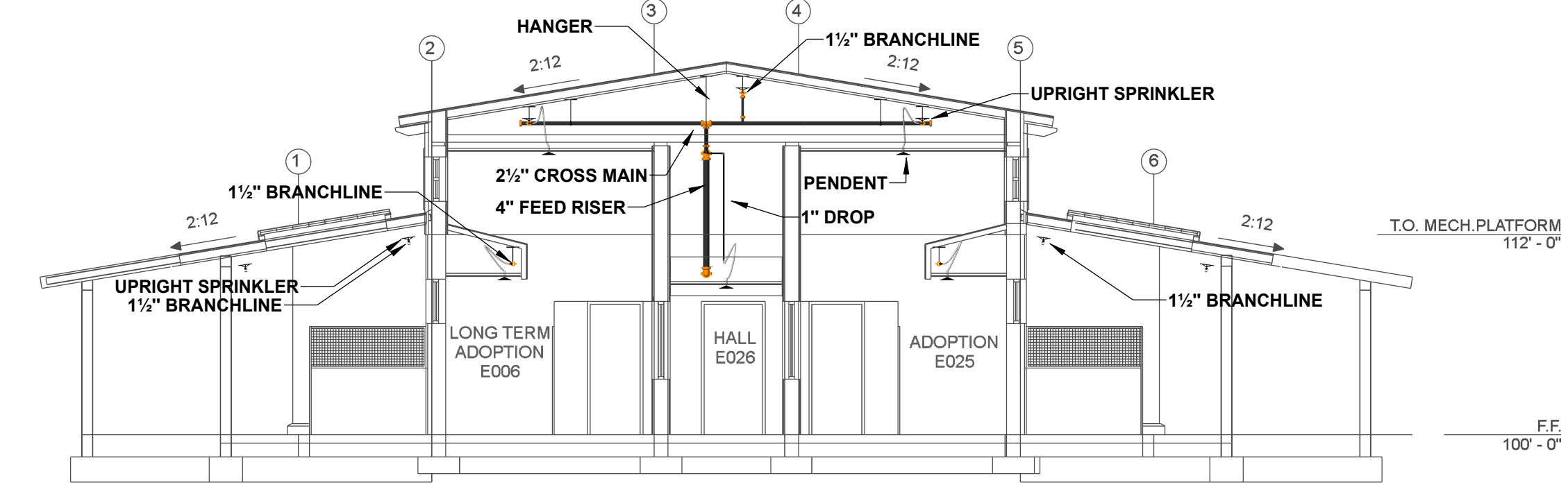
Symbol	Manufacturer	SIN	Model	Quantity	K-Factor	Type	Size	Response	Finish	Temp	Note	
●	Tyco	TY3531	Royal Flush II	81	5.6	Concealed Pendant	1/2"	Quick	Brass	200°F	WHITE PLATE CONCEALED	
⊗	Tyco	TY3131	TY-FRB	121	5.6	Upright	1/2"	Quick	Natural Brass	200°F	N/A	
▷	Tyco	TY3335	DS-11	2	5.6	Horizontal Sidewall	1"	Quick	Chrome	200°F	DRY STANDARD	
				Total = 204								



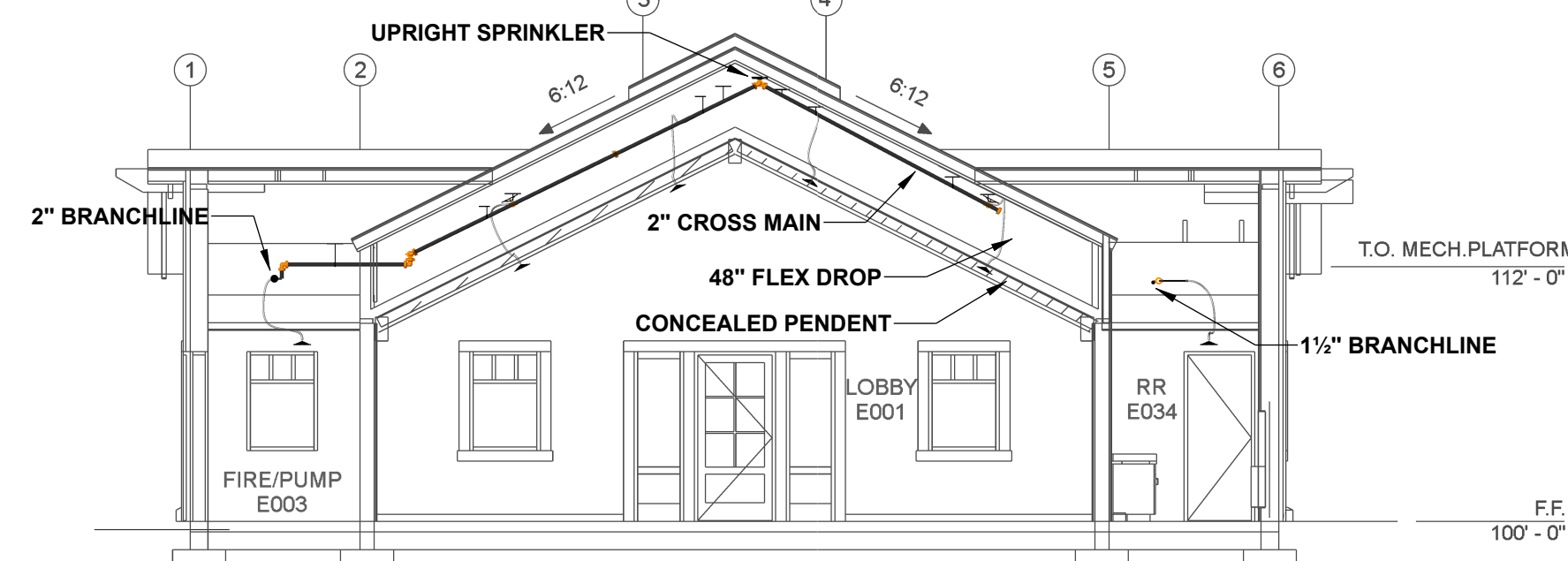
DRY SYSTEM INSPECTORS TEST DETAIL
 NOT TO SCALE



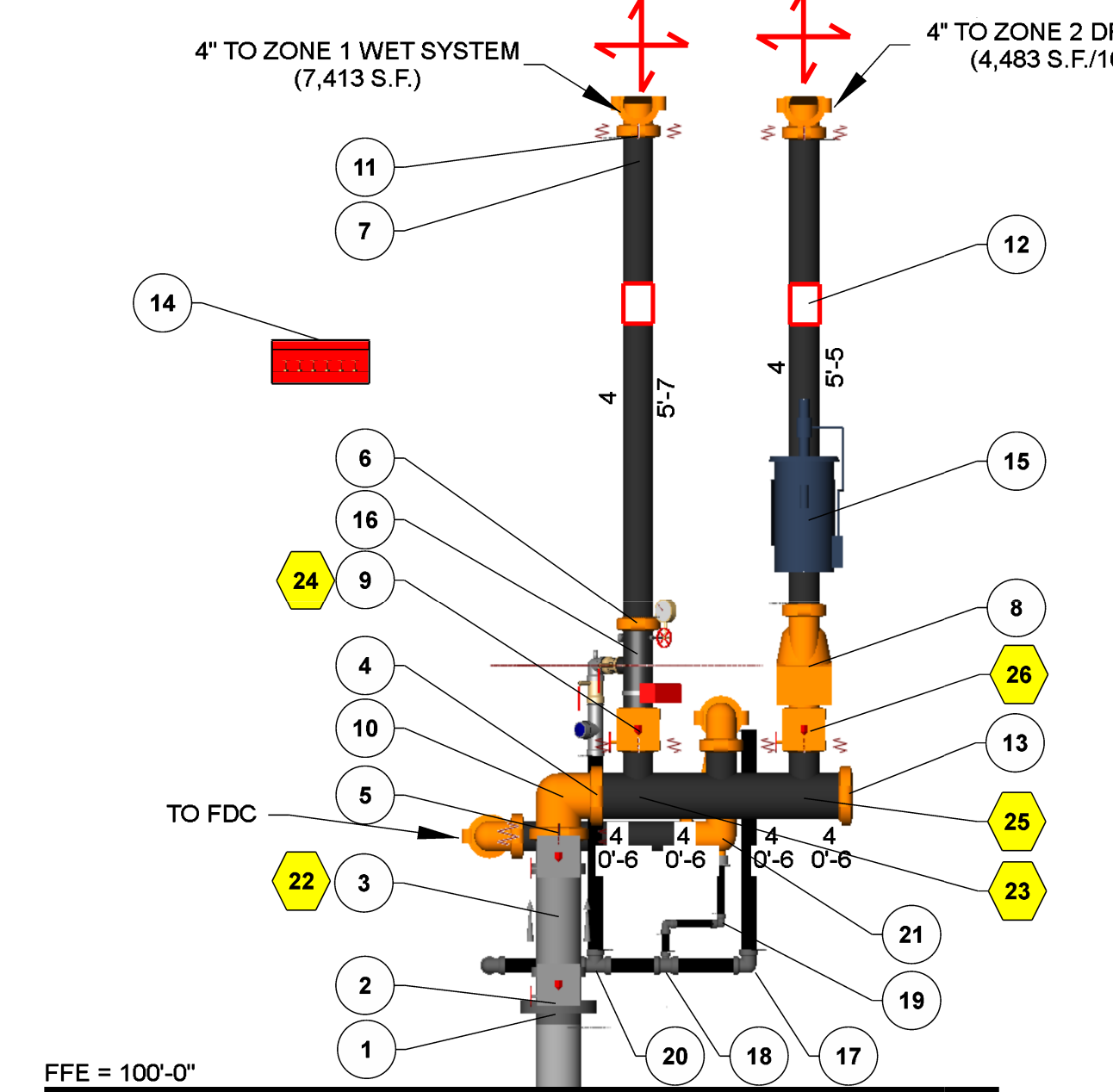
SEISMIC DETAILS



B BUILDING SECTION
 SCALE: 1/8" = 1'-0"



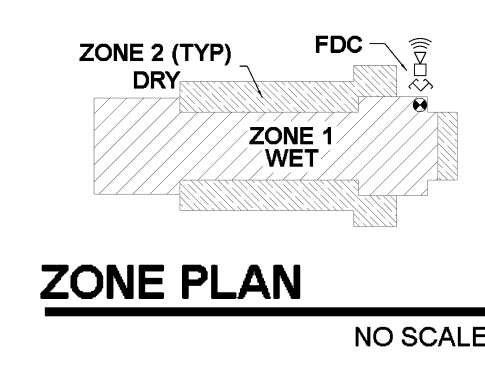
C BUILDING SECTION
 SCALE: 1/8" = 1'-0"



A RISER DETAIL
 SCALE: 1/2" = 1'-0"

Riser Legend

Key Note	Size	Description	Quantity
1	6	Ames IBR	1
2	6	Grvd Flanged Adapter, DI	1
3	6	Deringer 20, Blackflow, DCVA, Butterfly, G-G	1
4	6	Rigid Coupling, Org, E Gasket	7
5	6	Flexible Coupling, Org, E Gasket	3
6	4	Rigid Coupling, Org, E Gasket	6
7	4	Flexible Coupling, Org, E Gasket	4
8	4	768N NXT, Dry Pipe Valve, G-G	1
9	4	Butterfly Valve, G-G w/ Tamper	2
10	6	Grooved Short Radius, 90° Elbow, DI, Org	1
11	4	Grooved Short Radius, 90° Elbow, DI, Org	2
12	N/A	Hydraulic Placard	2
13	6	Grooved Cap, DI, Org	1
14	N/A	Spare Head Cabinet Per NFPA 13	1
15	N/A	General OLRV12016AC Riser Mount Air Compressor	1
16	4	Victaulic UM Assembly w/ Flow Switch, Pressure Gauge, & Inspector's Test/Drain	1
17	2	Threaded, 90° Elbow, DI	2
18	2 x 2 x 1	Threaded Reducing Tee, DI	1
19	1	Threaded, 90° Elbow, DI	2
20	2	Threaded Straight Tee, DI	1
21	4 x 1 x 4	Drain Elbow, DI, Org w/ Ball Drip	1



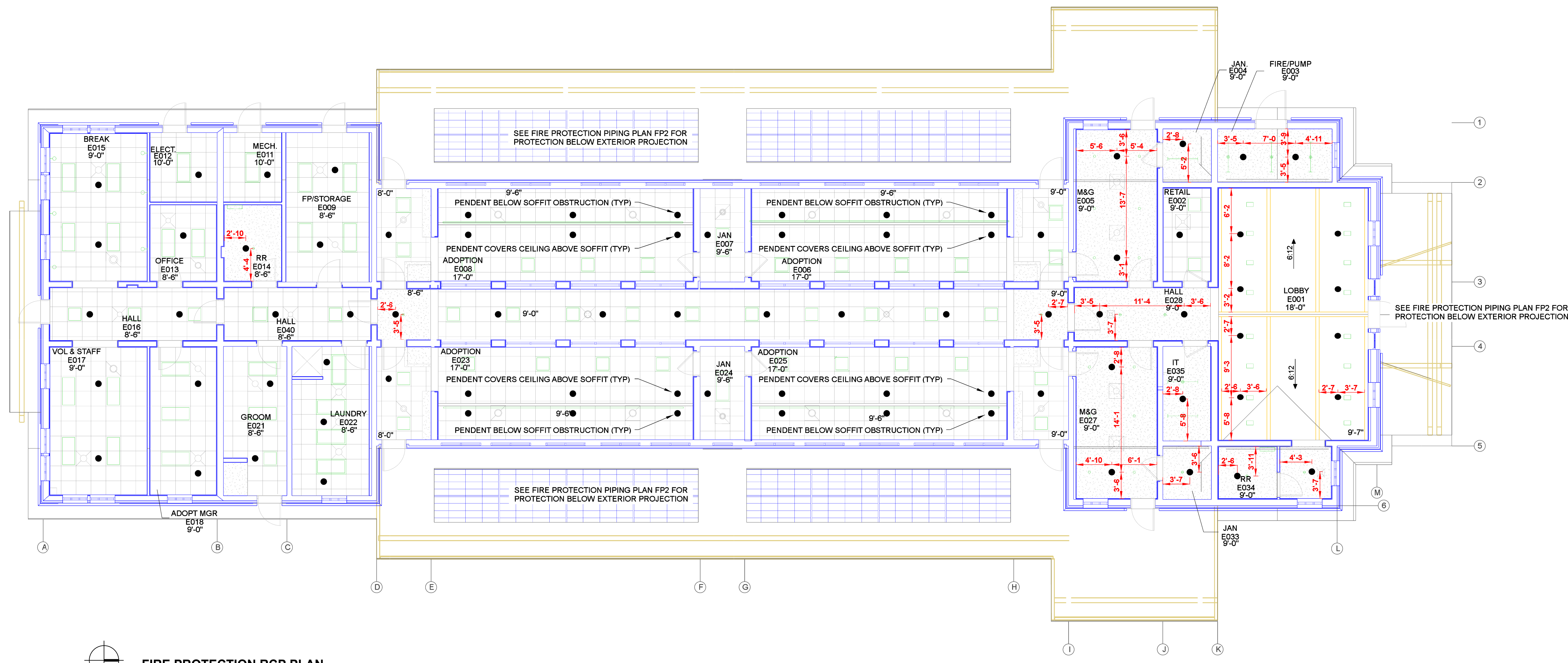
ZONE PLAN
 NO SCALE

FIRE PROTECTION PIPING PLAN
LIBERTY DOGS - ADOPTION
 1215 DAMONTE RANCH PKWY
 RENO, NV 89521
 APN 140-010-55

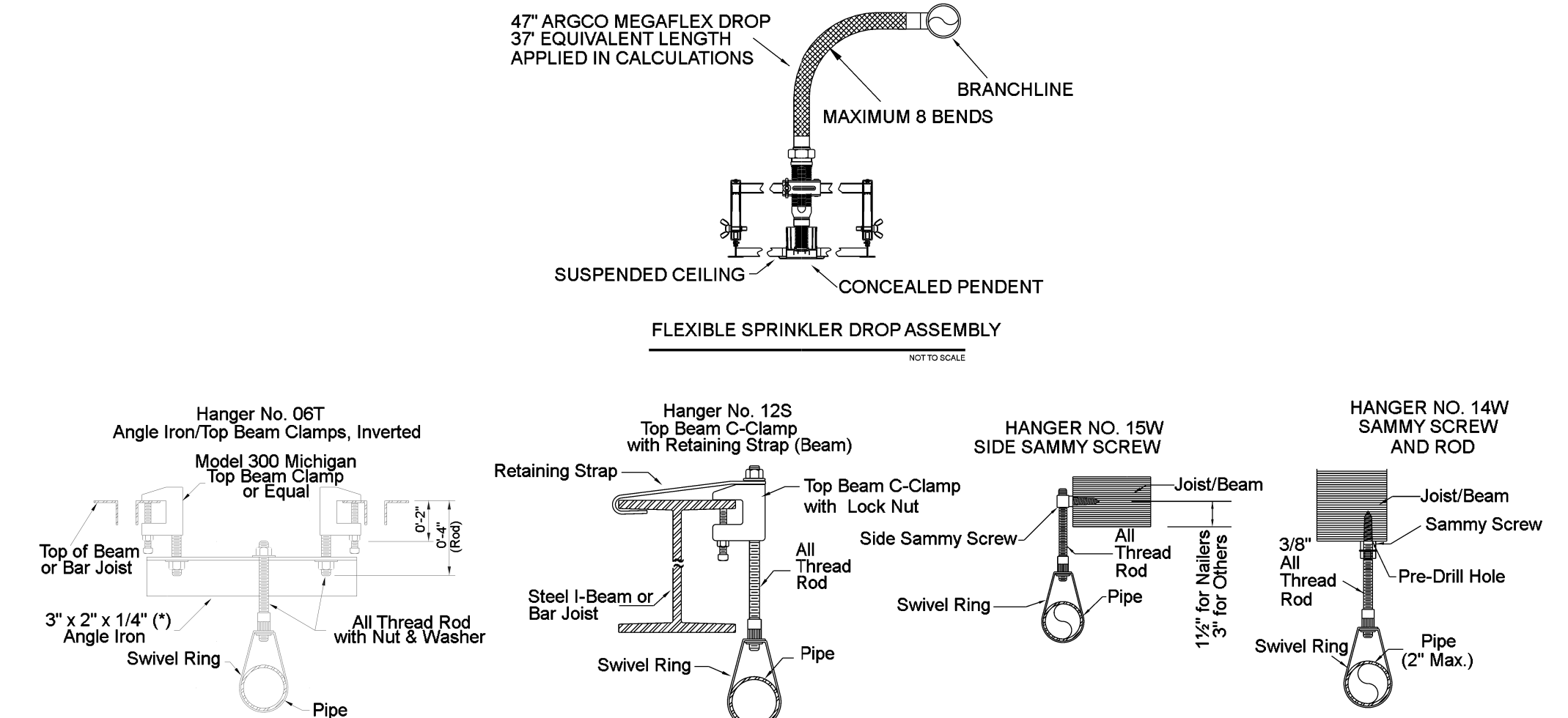
Sheet Title: Project
 DRAWN BY: MAS
 CHECKED BY: ADK
 DATE: 5/17/2024
 PROJECT NO:
 SCALE: 1/8" = 1'-0"

Sheet No:
FP2 of 5

AIR VENT NOTE:
 AS STATED IN 16.7:
 AT THE DISCRETION OF THE
 INSTALLER, AUTOMATIC AIR VENTS
 ARE TO BE INSTALLED BY ONE OF
 THE FOLLOWING METHODS
 (1) MANUAL VALVE, MIN 1/2"
 (2) AUTOMATIC AIR VENT
 (3) REMOTE INSPECTOR TEST VALVE
 (4) OTHER APPROVED MEANS



FIRE PROTECTION RCP PLAN
 SCALE: 1/8" = 1'-0"



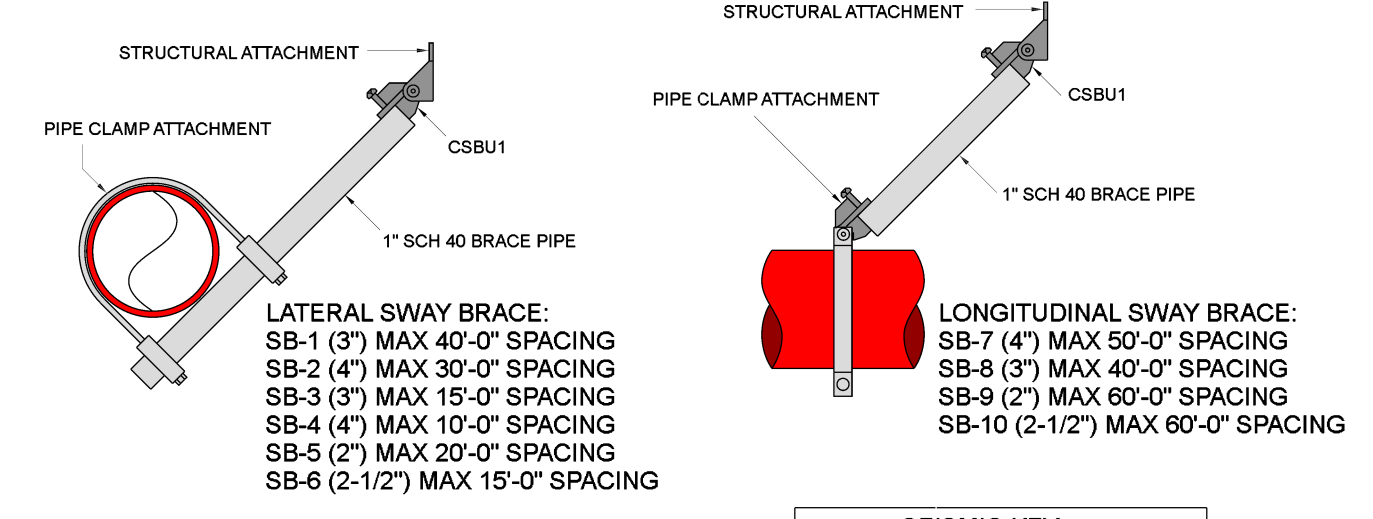
MAXIMUM DISTANCE BETWEEN HANGERS (FT.-IN.)

PIPE SIZE	3/4"	1"	1 1/4"	1 1/2"	2"	2 1/2"	3"	4"	6"	8"
STEEL PIPE EXCEPT THREADED LIGHTWALL	NA	12-0	12-0	15-0	15-0	15-0	15-0	15-0	15-0	15-0

HANGER DETAILS

Liberty Dogs - Adoption

Symbol	Manufacturer	SIN	Model	Quantity	K-Factor	Type	Size	Response	Finish	Temp	Note
●	Tyco	TY3531	Royal Flush II	81	5.6	Concealed Pendent	1/2"	Quick	Brass	200°F	WHITE PLATE CONCEALED
○	Tyco	TY3131	TY-FRB	121	5.6	Upright	1/2"	Quick	Natural Brass	200°F	N/A
⊗	Tyco	TY3335	DS-1	2	5.6	Horizontal Sidewall	1"	Quick	Chrome	200°F	DRY STANDARD
				Total = 204							

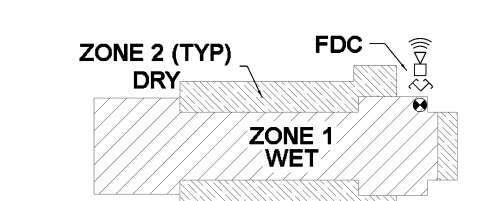


SEISMIC KEY:
 LATERAL BRACE
 LONGITUDINAL BRACE
 BRANCH LINE RESTRAINT
 4-WAY BRACE

SEISMIC BRANCH LINE RESTRAINT (Cp=0.88):
 1" PIPE = 26'-0" MAX SPACING
 1-1/4" PIPE = 27'-0" MAX SPACING
 1-1/2" PIPE = 29'-0" MAX SPACING
 2" PIPE = 31'-0" MAX SPACING

*BRANCH LINE RESTRAINT MAY BE OMITTED WITH CPVC HANGERS LISTED TO PROVIDE RESTRAINT PER NFPA 13 SEC. 9.3.6.1(4)

SEISMIC DETAILS

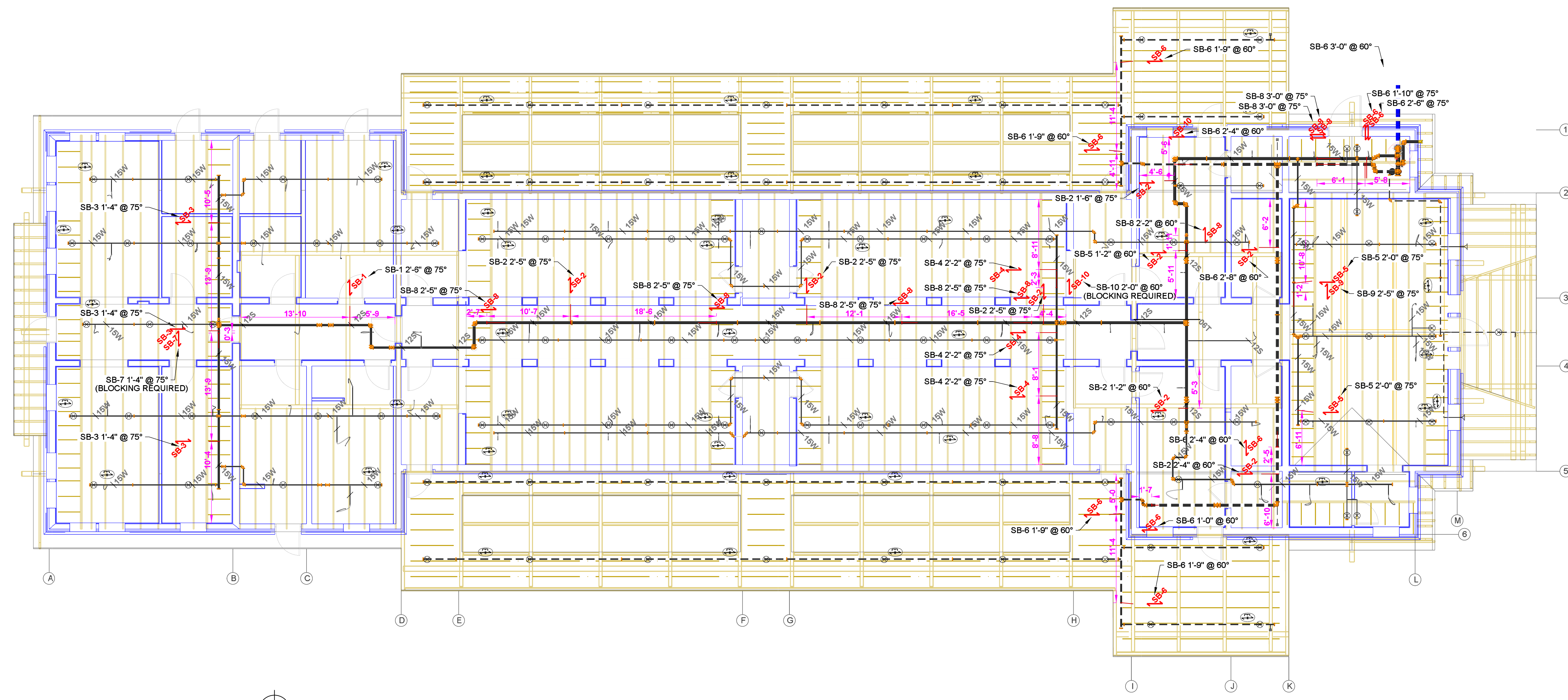


ZONE PLAN
 NO SCALE

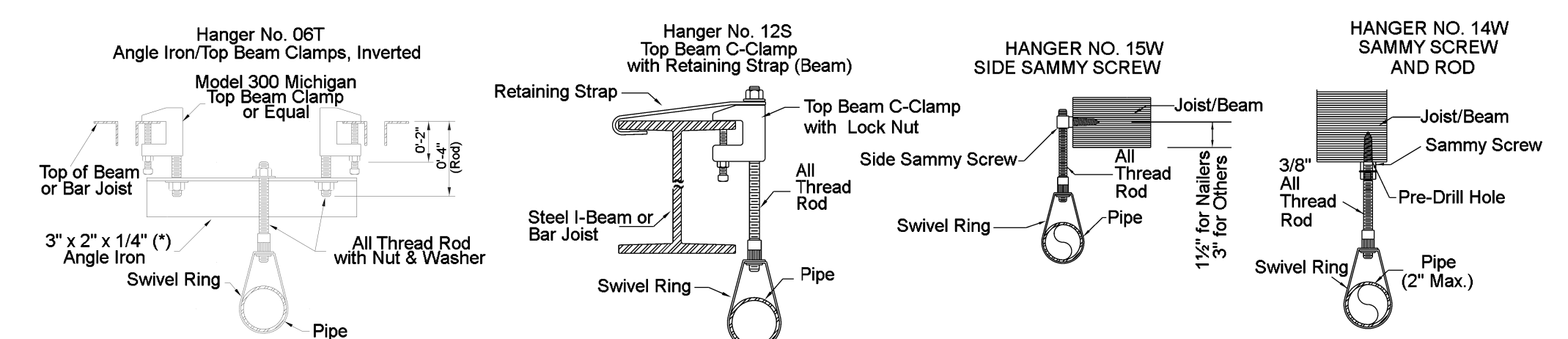
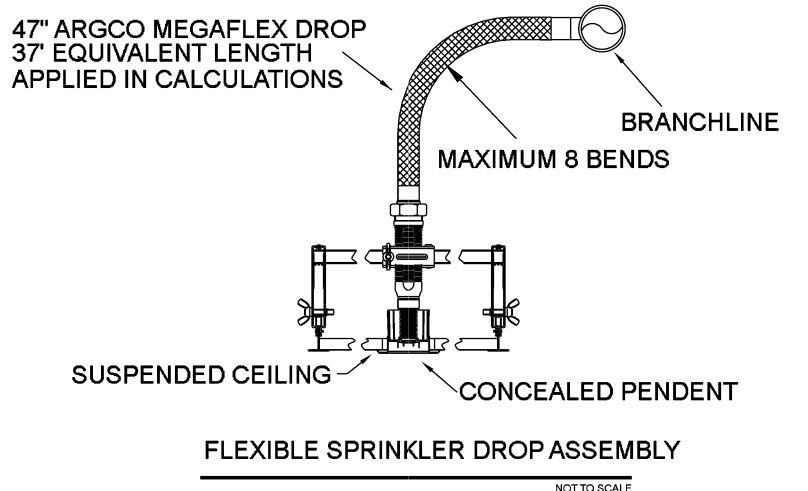
FIRE SPRINKLER PLANS
FIRE PROTECTION RCP PLAN
LIBERTY DOGS - ADOPTION
 1215 DAMONTE RANCH PKWY
 RENO, NV 89521
 APN 140-010-55

DRAWN BY:	MAS
CHECKED BY:	ADK
DATE:	5/17/2024
PROJECT NO.:	
Sheet No.:	FP3 of 5

PRINTED ON 06/24/24 AT 09:59:58 Liberty Dogs - Adoption TAB - OpenCL_A332.cad

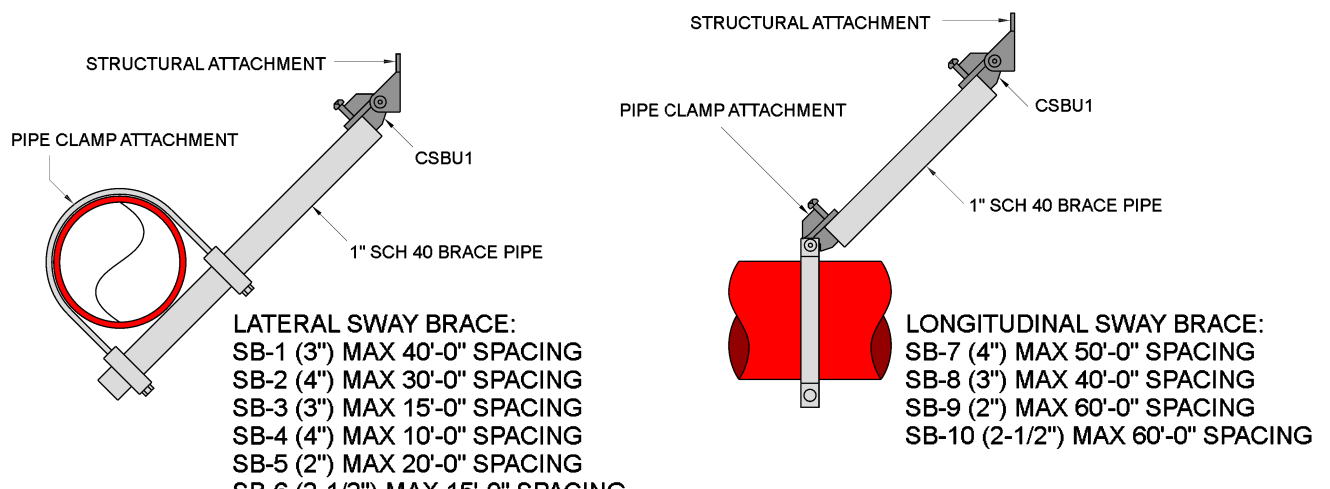


FIRE PROTECTION SEISMIC PLAN
SCALE: 1/8" = 1'-0"
NORTH



MAXIMUM DISTANCE BETWEEN HANGERS (FT.-IN.)	
STEEL PIPE EXCEPT THREADED LIGHTWALL	3/4" NA, 1" 12-0, 1 1/4" 12-0, 1 1/2" 15-0, 2" 15-0, 2 1/2" 15-0, 3" 15-0, 4" 15-0, 6" 15-0, 8" 15-0

HANGER DETAILS



LATERAL SWAY BRACE:
SB-1 (3) MAX 40'-0" SPACING
SB-2 (4) MAX 30'-0" SPACING
SB-3 (3) MAX 15'-0" SPACING
SB-4 (4) MAX 10'-0" SPACING
SB-5 (2) MAX 30'-0" SPACING
SB-6 (2-1/2) MAX 15'-0" SPACING

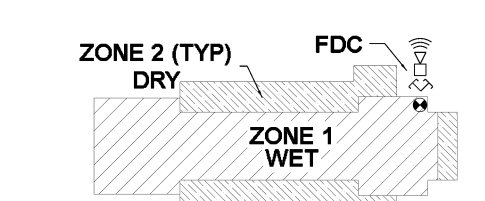
LONGITUDINAL SWAY BRACE:
SB-7 (4) MAX 50'-0" SPACING
SB-8 (3) MAX 40'-0" SPACING
SB-9 (2) MAX 60'-0" SPACING
SB-10 (2-1/2) MAX 60'-0" SPACING

SEISMIC BRANCH LINE RESTRAINT (Cp=0.88):
1" PIPE = 26'-0" MAX SPACING
1-1/4" PIPE = 27'-0" MAX SPACING
1-1/2" PIPE = 29'-0" MAX SPACING
2" PIPE = 31'-0" MAX SPACING

*BRANCH LINE RESTRAINT MAY BE OMITTED WITH CPVC HANGERS LISTED TO PROVIDE RESTRAINT PER NFPA 13 SEC. 9.3.6.1(4)

SEISMIC DETAILS

Liberty Dogs - Adoption											
Symbol	Manufacturer	SIN	Model	Qty	K-Factor	Type	Size	Response	Finish	Temp	Note
●	Tyco	TY3531	Royal Flush II	81	5.6	Concealed Pendent	1/2"	Quick	Brass	200°F	WHITE PLATE CONCEALED
⊗	Tyco	TY3131	TY-FRB	121	5.6	Upright	1/2"	Quick	Natural Brass	200°F	N/A
▷	Tyco	TY3335	DS-1	2	5.6	Horizontal Sidewall	1"	Quick	Chrome	200°F	DRY STANDARD
				Total = 204							



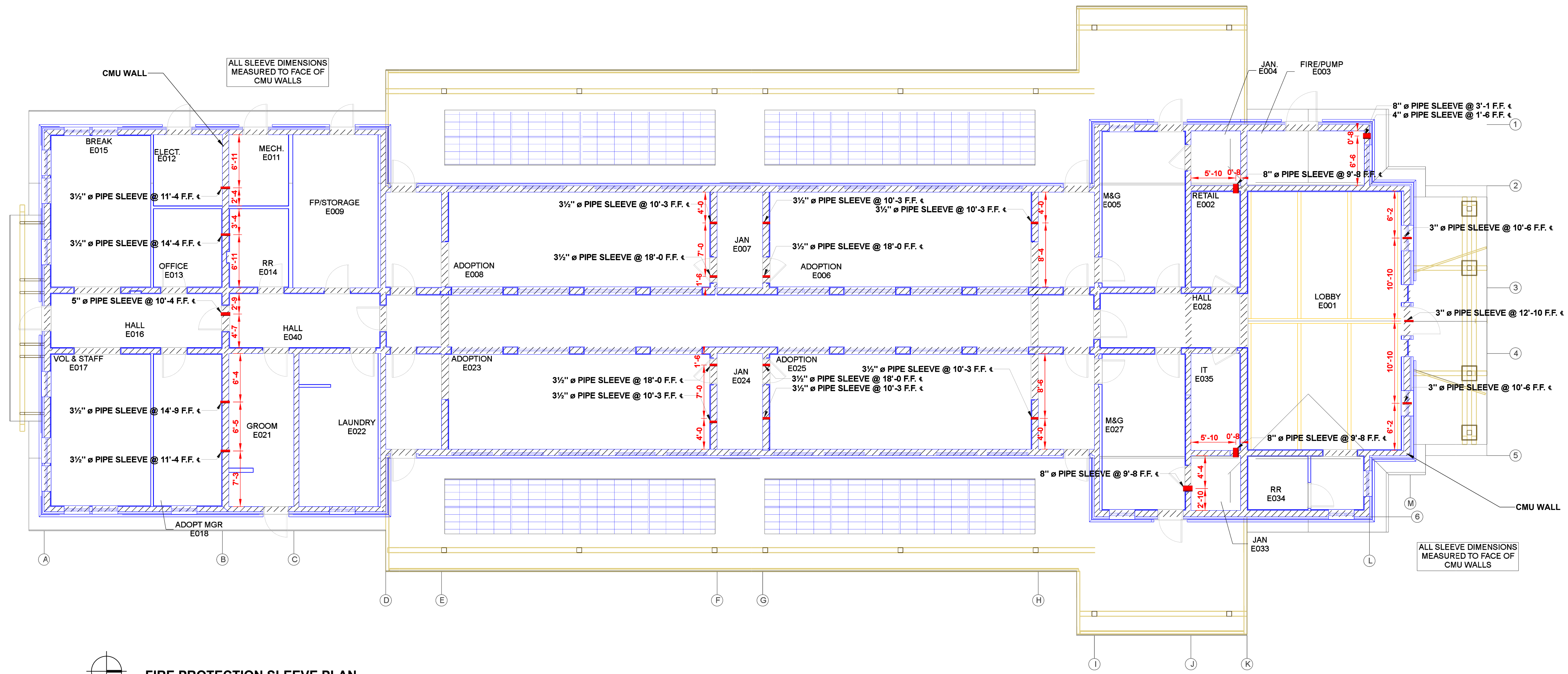
ZONE PLAN
NO SCALE

FIRE SPRINKLER PLANS
FIRE PROTECTION SEISMIC PLAN
LIBERTY DOGS - ADOPTION
1215 DAMONTE RANCH PKWY
RENO, NV 89521
APN 140-010-55

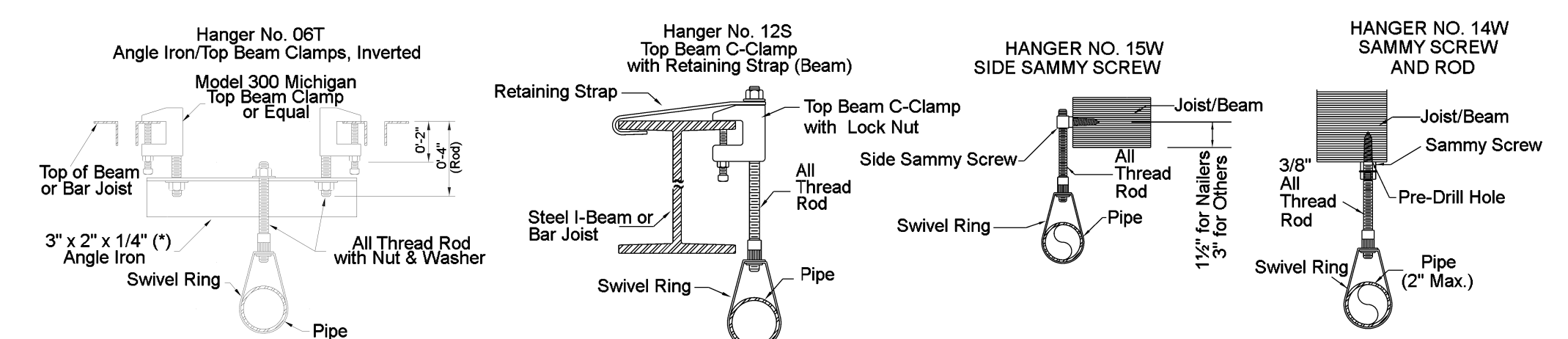
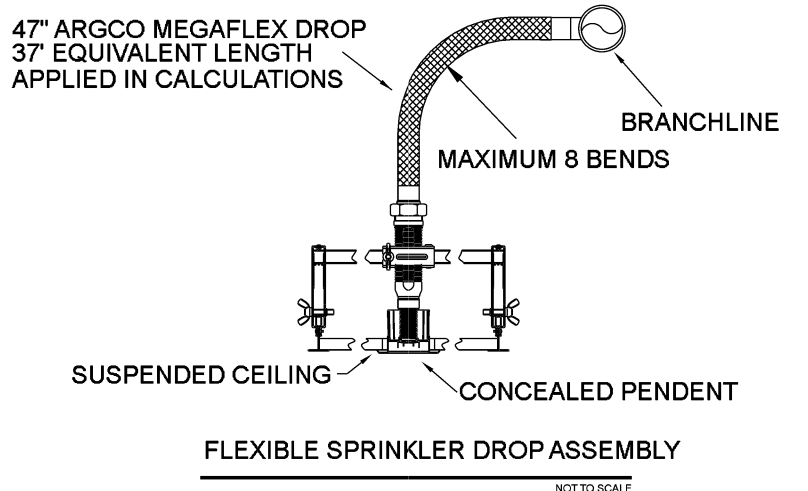
DRAWN BY:	MAS
CHECKED BY:	ADK
DATE:	5/17/2024
PROJECT NO.:	

PRINTED ON 06/25/24 AT 09:39:23 Liberty Dogs - Adoption TAB - OpenCL_A323.dwg

AIR VENT NOTE:
 AS STATED IN 16.7:
 AT THE DISCRETION OF THE
 INSTALLER, AUTOMATIC AIR VENTS
 ARE TO BE INSTALLED BY ONE OF
 THE FOLLOWING METHODS
 (1) MANUAL VALVE, MIN 1/2"
 (2) AUTOMATIC AIR VENT
 (3) REMOTE INSPECTOR TEST VALVE
 (4) OTHER APPROVED MEANS

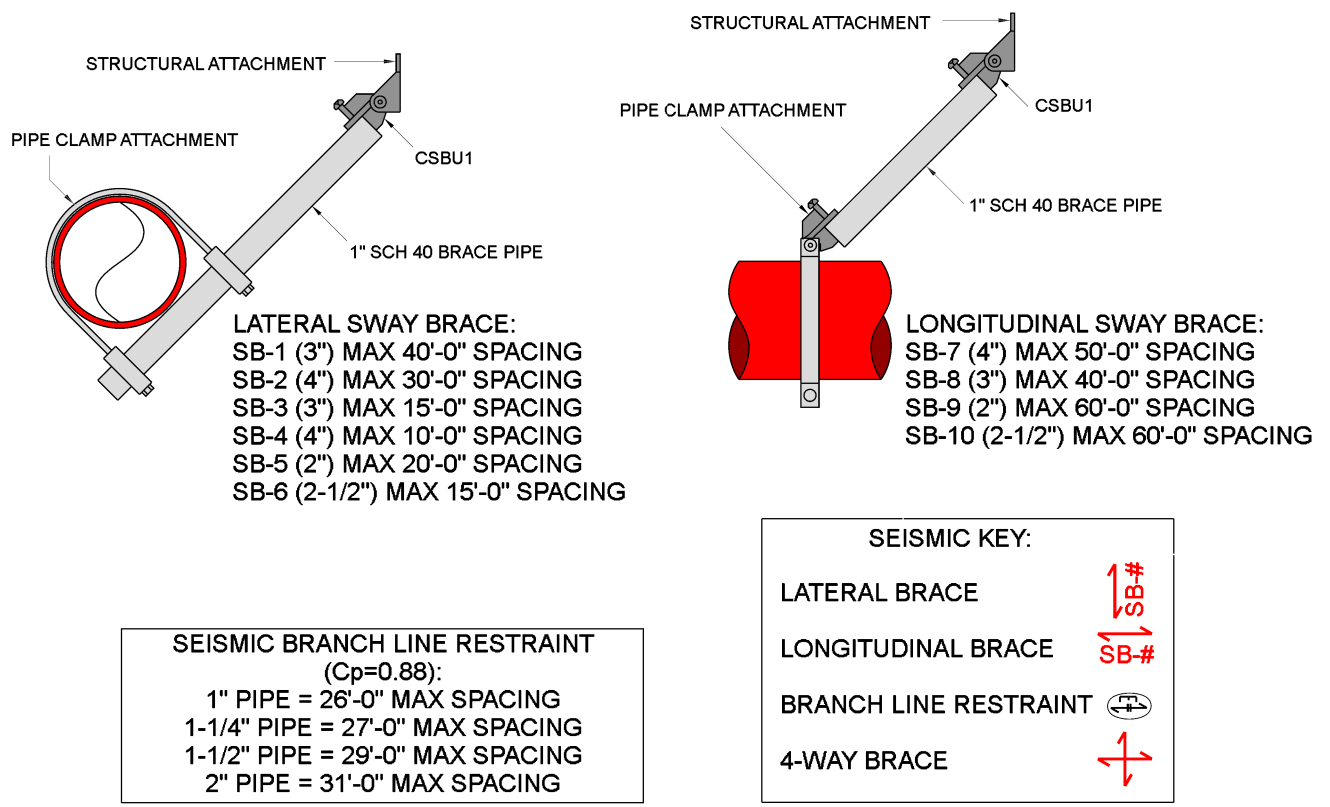


FIRE PROTECTION SLEEVE PLAN
 SCALE: 1/8" = 1'-0"
 NORTH



MAXIMUM DISTANCE BETWEEN HANGERS (FT.-IN.)	
STEEL PIPE EXCEPT THREADED LIGHTWALL	3/4" NA, 1" 12-0, 1 1/4" 12-0, 1 1/2" 15-0, 2" 15-0, 2 1/2" 15-0, 3" 15-0, 4" 15-0, 6" 15-0, 8" 15-0

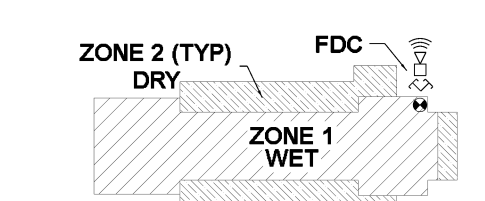
HANGER DETAILS



SEISMIC KEY:
 LATERAL BRACE
 LONGITUDINAL BRACE
 BRANCH LINE RESTRAINT
 4-WAY BRACE

SEISMIC DETAILS

Liberty Dogs - Adoption											
Symbol	Manufacturer	SIN	Model	Quantity	K-Factor	Type	Size	Response	Finish	Temp	Note
●	Tyco	TY3531	Royal Flush II	81	5.6	Concealed Pendent	1/2"	Quick	Brass	200°F	WHITE PLATE CONCEALED
⊗	Tyco	TY3131	TY-FRB	121	5.6	Upright	1/2"	Quick	Natural Brass	200°F	N/A
▷	Tyco	TY3335	DS-1	2	5.6	Horizontal Sidewall	1"	Quick	Chrome	200°F	DRY STANDARD
				Total = 204							



ZONE PLAN
 NO SCALE

FIRE SPRINKLER PLANS
FIRE PROTECTION SLEEVE PLAN
LIBERTY DOGS - ADOPTION
 1215 DAMONTE RANCH PKWY
 RENO, NV 89521
 APN 140-010-55

DRAWN BY:	MAS
CHECKED BY:	ADK
DATE:	5/17/2024
PROJECT NO.:	
Sheet No.:	FP5 of 5

PRINTED ON 06/25/24 AT 09:42:30 Liberty Dogs - Adoption TAB - OpenCL_A332.dwg