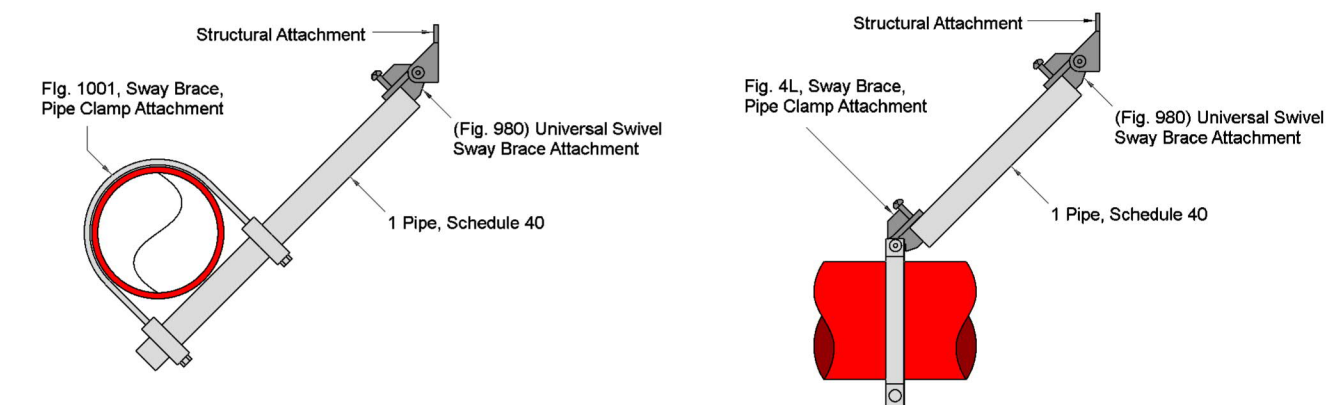


GENERAL INFORMATION

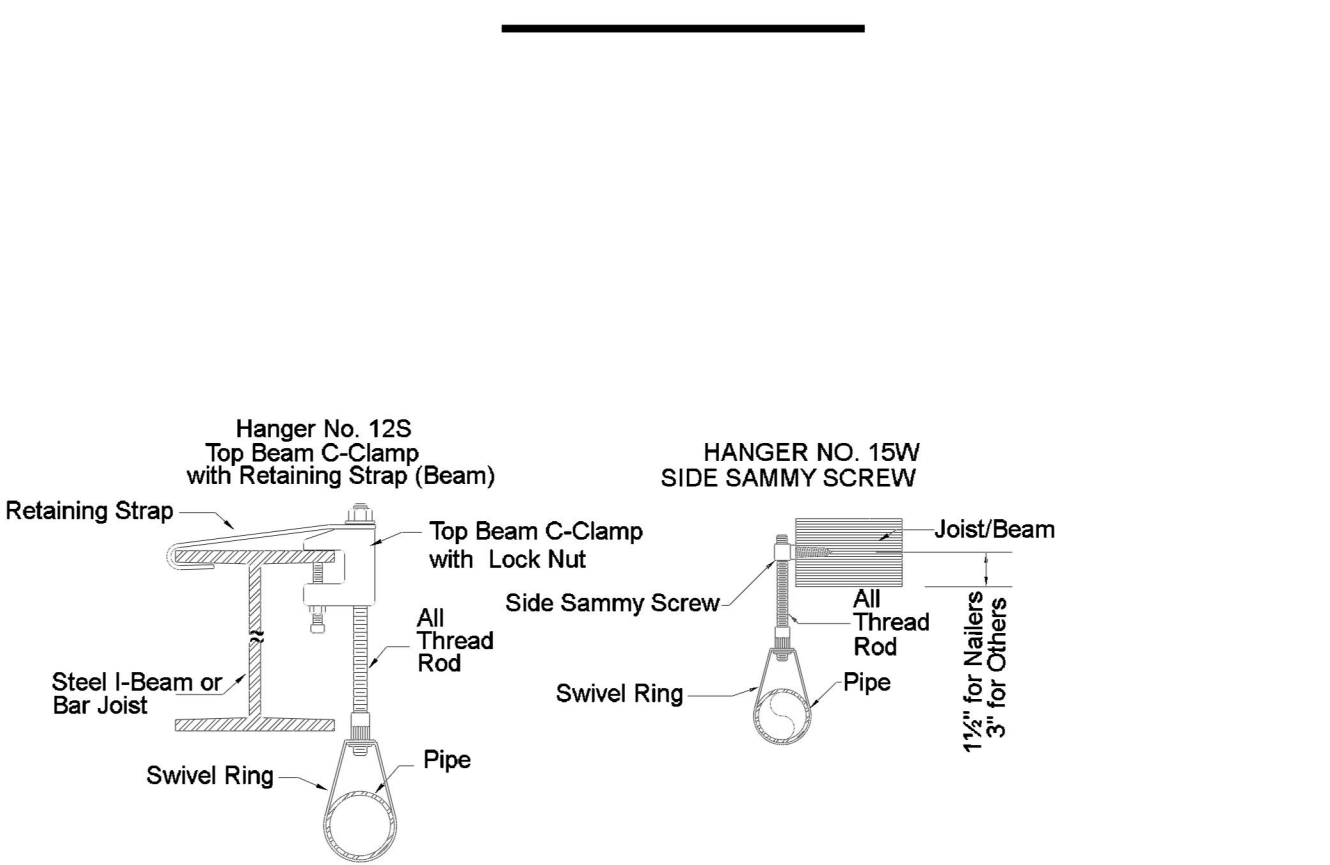
1. INTERNATIONAL BUILDING CODE (2018)
 - 1.1 OCCUPANCY: TYPE B
 - 1.2 TYPE OF CONSTRUCTION: V-B
 - 1.3 SPRINKLERED AREAS (APPROXIMATE - SEE ARCHITECTURAL PLANS FOR ACTUAL)
 - ZONE 1 (WET) = 40,400 S.F.
 - ZONE 2 (DRY) = 10,100 S.F.
 - 1.4 DESIGN & INSTALLATION STANDARDS: NFPA-13 (2019)
 - 1.5 AUTHORITY HAVING JURISDICTION (AHJ): CITY OF RENO FIRE MARSHAL
2. SPRINKLER PIPE TYPES:
 - 2.1 1" PIPE TO BE SCHEDULE 40 BLACK STEEL w/ THREADED FITTINGS
 - 2.2 1-1/4" THROUGH 4" MAINS & BRANCH LINES TO BE BLK SCHEDULE 10 w/ GROOVED FITTINGS
 - 2.3 MAINS & BRANCH LINES TO BE ROLL-GROOVED BLK SCHEDULE 10
 - 2.4 2" AND LARGER TO USE GROOVED SHORT RADIUS FITTINGS
 - 2.5 1" PIPE TO BE SCHEDULE 40 BLACK STEEL w/ THREADED FITTINGS
 - 2.6 1-1/4" THROUGH 4" MAINS & BRANCH LINES TO BE BLK SCHEDULE 10 w/ GROOVED FITTINGS
 - 2.7 MAINS & BRANCH LINES TO BE ROLL-GROOVED BLK SCHEDULE 10
 - 2.8 2" AND LARGER TO USE GROOVED SHORT RADIUS FITTINGS
3. DESIGN CRITERIA:
 - 3.1 LIGHT HAZARD AREAS INCLUDE OFFICE/ADMINISTRATIVE, RESTROOMS, AND CORRIDORS
 - 3.2 ORDINARY HAZARD GROUP I AREAS INCLUDE MECHANICAL AND ELECTRICAL ROOMS
 - 3.3 REMOTE AREA REDUCTIONS HAVE BEEN TAKEN WHERE APPLICABLE PER NFPA 13 SEC. 19.3.3.2.3
 - 3.4 REMOTE AREA INCREASED BY 30% FOR SLOPED CEILINGS PER NFPA 13 SEC. 19.3.3.2.4
 - 3.5 REMOTE AREA INCREASED BY 30% FOR DRY AND DOUBLE INTERLOCK PREACTION SYSTEMS PER NFPA 13 SEC. 19.3.3.2.5
4. NOTES:
 - 4.1 ALL MATERIAL TO BE NEW AND MEET U.L. STANDARDS
 - 4.2 HANGERS TO BE INSTALLED IN ACCORDANCE WITH NFPA 13 AND ENGINEER DETAILS - SEE PLAN FOR HANGING REQUIREMENTS
 - 4.3 CONCRETE WEDGE ANCHORS FOR SEISMIC SHALL BE PLACED IN CMU WALL WITH GROUTED
 - 4.4 DRY SYSTEM REQUIREMENTS:
 - DRY SYSTEM PIPE SLOPE INSTALLATION
 - SPRINKLER MAINS TO BE 1/4" PER 10'-0"
 - SPRINKLER BRANCH LINES TO BE 1/2" PER 10'-0"
 - DRY SYSTEM CAPACITY
 - 525 GALLONS
5. SYMBOLS USED ON DRAWINGS:
 - *x'x'FF' PIPE ELEVATION ABOVE FINISH FLOOR
 - *x'x'IS' PIPE ELEVATION BELOW TOP OF STEEL
 - [LH] ROOM HAZARD CLASSIFICATION (ALL ROOMS ARE CONSIDERED LIGHT HAZARD U.N.O.)
 - [HY] HYDRAULIC CALCULATION JUNCTION POINT
 - 9'-0" CEILING HEIGHT (TYP 9'-0" U.N.O.)
 - FIRE RATED WALL
 - WET BLACK STEEL PIPE
 - - - DRY BLACK STEEL PIPE
6. SCOPE OF WORK:
 - 6.1 INSTALL A COMPLETE ONE WET ZONE AND ONE DRY ZONE FIRE SPRINKLER SYSTEM TO COVER ALL AREAS OF BUILDING
 - 6.2 ALL AREAS OF THE BUILDING TO BE INSTALLED AND COVERED IN ACCORDANCE WITH THE LOCAL AUTHORITY HAVING JURISDICTION AND PER NFPA 13



- LATERAL SWAY BRACE:**
- SB-1 (4" PIPE) 40'-0" MAX SPACING
 - SB-3 (4" PIPE) 30'-0" MAX SPACING
 - SB-5 (4" PIPE) 38'-0" MAX SPACING
 - SB-7 (4" PIPE) 10'-0" MAX SPACING
 - SB-9 (4" PIPE) 38'-0" MAX SPACING
 - SB-11 (2-1/2" PIPE) 4'-0" MAX SPACING
 - SB-13 (2-1/2" PIPE) 25'-0" MAX SPACING
 - SB-15 (2-1/2" PIPE) 4'-0" MAX SPACING
 - SB-17 (4" PIPE) 18'-0" MAX SPACING
 - SB-19 (2-1/2" PIPE) 14'-0" MAX SPACING
 - SB-21 (2-1/2" PIPE) 4'-0" MAX SPACING
 - SB-23 (2-1/2" PIPE) 25'-0" MAX SPACING
 - SB-25 (2-1/2" PIPE) 20'-0" MAX SPACING
 - SB-27 (2-1/2" PIPE) 4'-0" MAX SPACING
 - SB-29 (4" PIPE) 30'-0" MAX SPACING
- LONGITUDINAL SWAY BRACE:**
- SB-2 (4" PIPE) 65'-0" MAX SPACING
 - SB-4 (4" PIPE) 38'-0" MAX SPACING
 - SB-6 (4" PIPE) 40'-0" MAX SPACING
 - SB-8 (2-1/2" PIPE) 75'-0" MAX SPACING
 - SB-10 (4" PIPE) 25'-0" MAX SPACING
 - SB-12 (4" PIPE) 14'-0" MAX SPACING

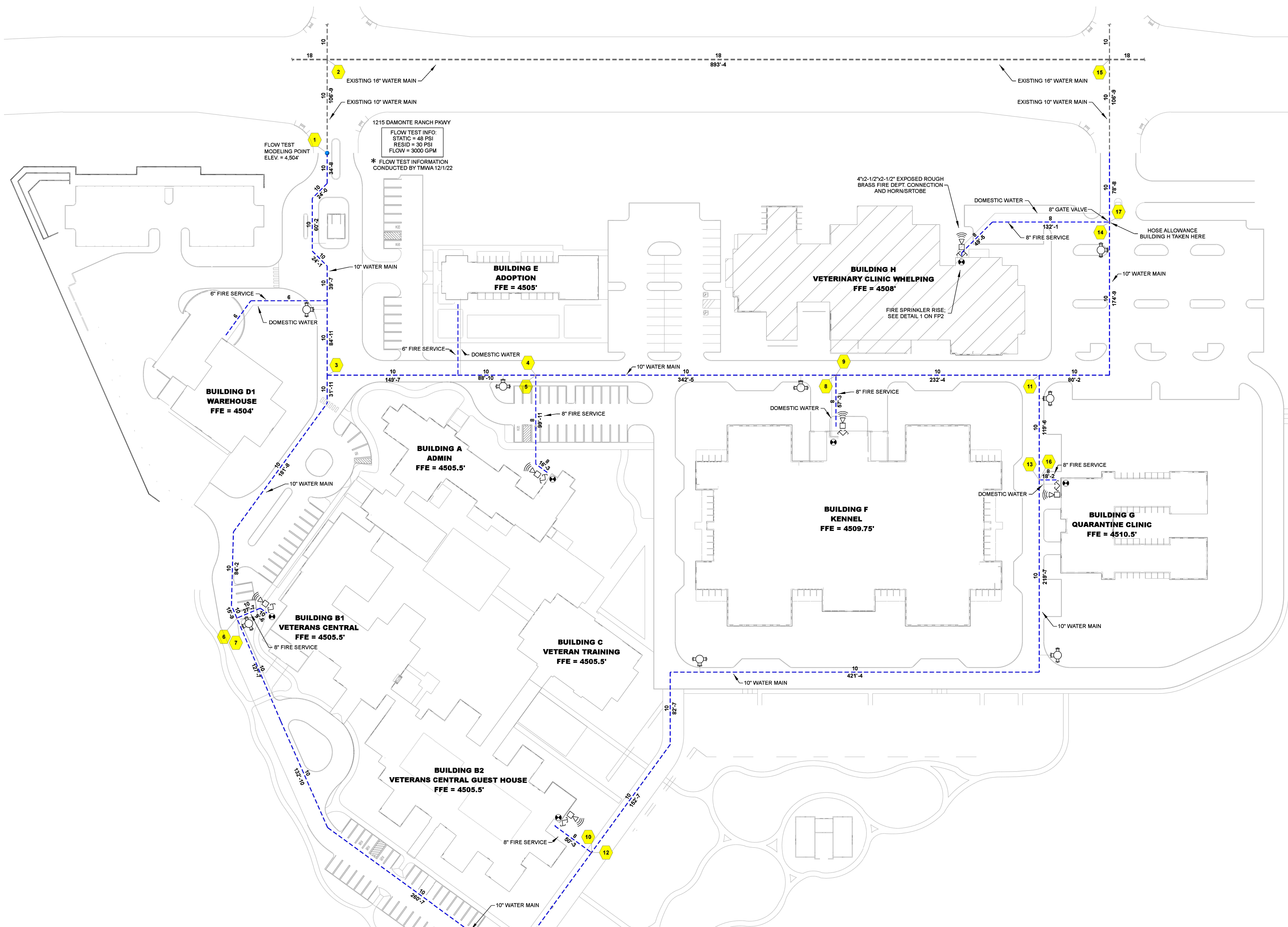
- SEISMIC BRANCH LINE RESTRAINT (Cp=0.87)**
- 1" PIPE = 28'-0" MAX SPACING
 - 1-1/2" PIPE = 29'-0" MAX SPACING
 - 2" PIPE = 31'-0" MAX SPACING
- SEISMIC KEY:**
- LATERAL BRACE
 - LONGITUDINAL BRACE
 - BRANCH LINE RESTRAINT

NOTE: FOR 2-1/2" PIPE AND LARGER INSTALL ONE FLEXIBLE COUPLING AT TOP OF RISERS OVER 3'-0" AND TWO FLEXIBLE COUPLINGS AT TOP AND BOTTOM FOR RISERS OVER 7'-0"



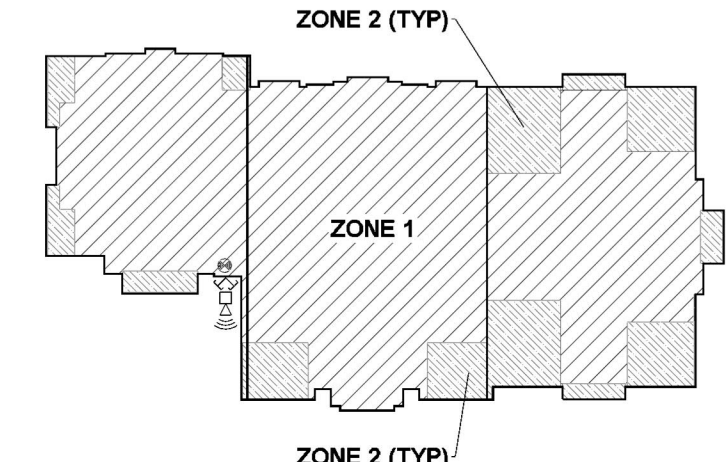
MAXIMUM DISTANCE BETWEEN HANGERS (FT.-IN.)

| STEEL PIPE EXCEPT THREADED LIGHTWALL | 3/4" | 1" | 1 1/4" | 1 1/2" | 2" | 2 1/2" | 3" | 4" | 6" | 8" |
|--------------------------------------|------|------|--------|--------|------|--------|------|------|------|------|
| | NA | 12-0 | 12-0 | 15-0 | 15-0 | 15-0 | 15-0 | 15-0 | 15-0 | 15-0 |



SITE PLAN

SCALE: 1" = 50'-0"



Liberty Dogs Vet Whelping - Sprinkler Legend

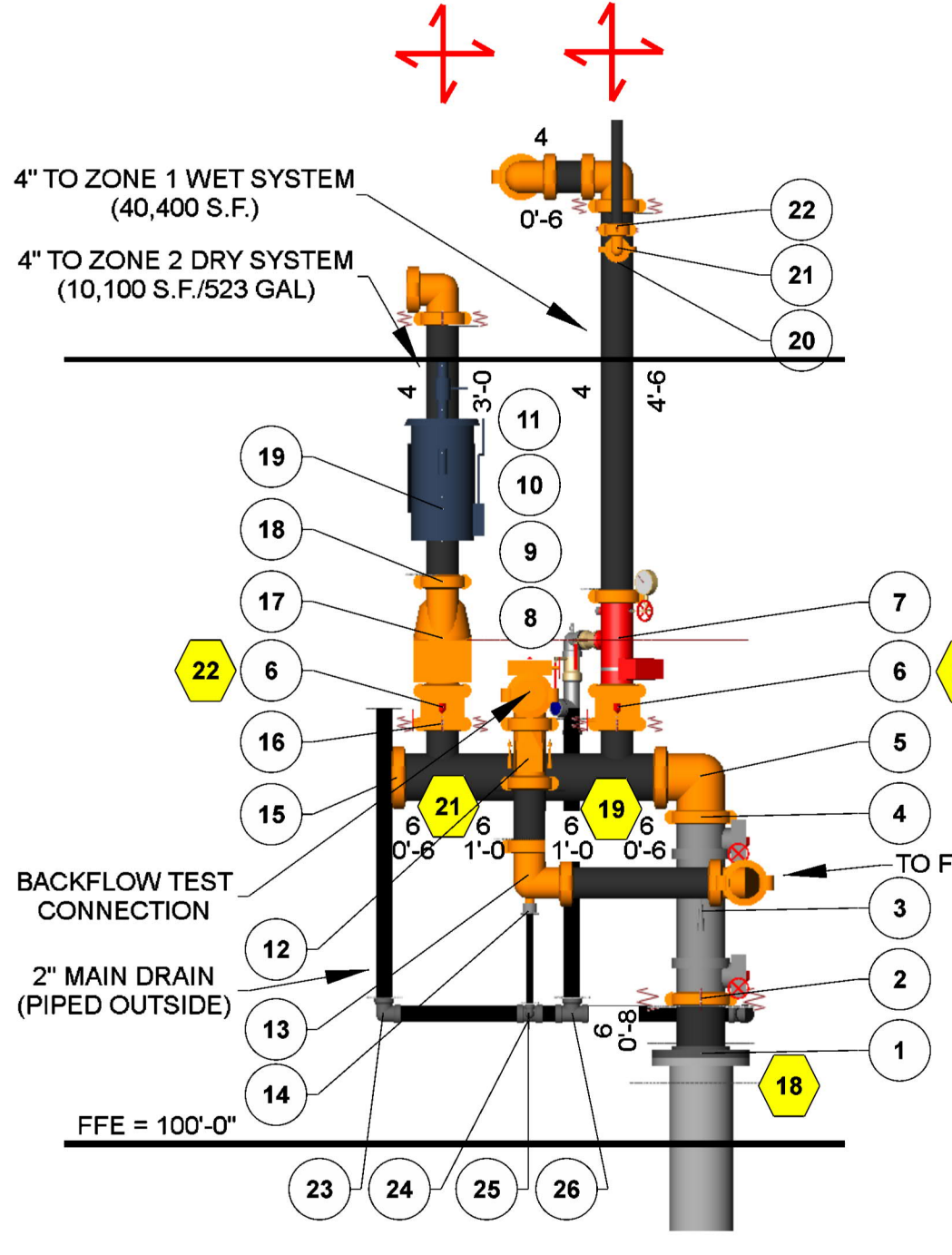
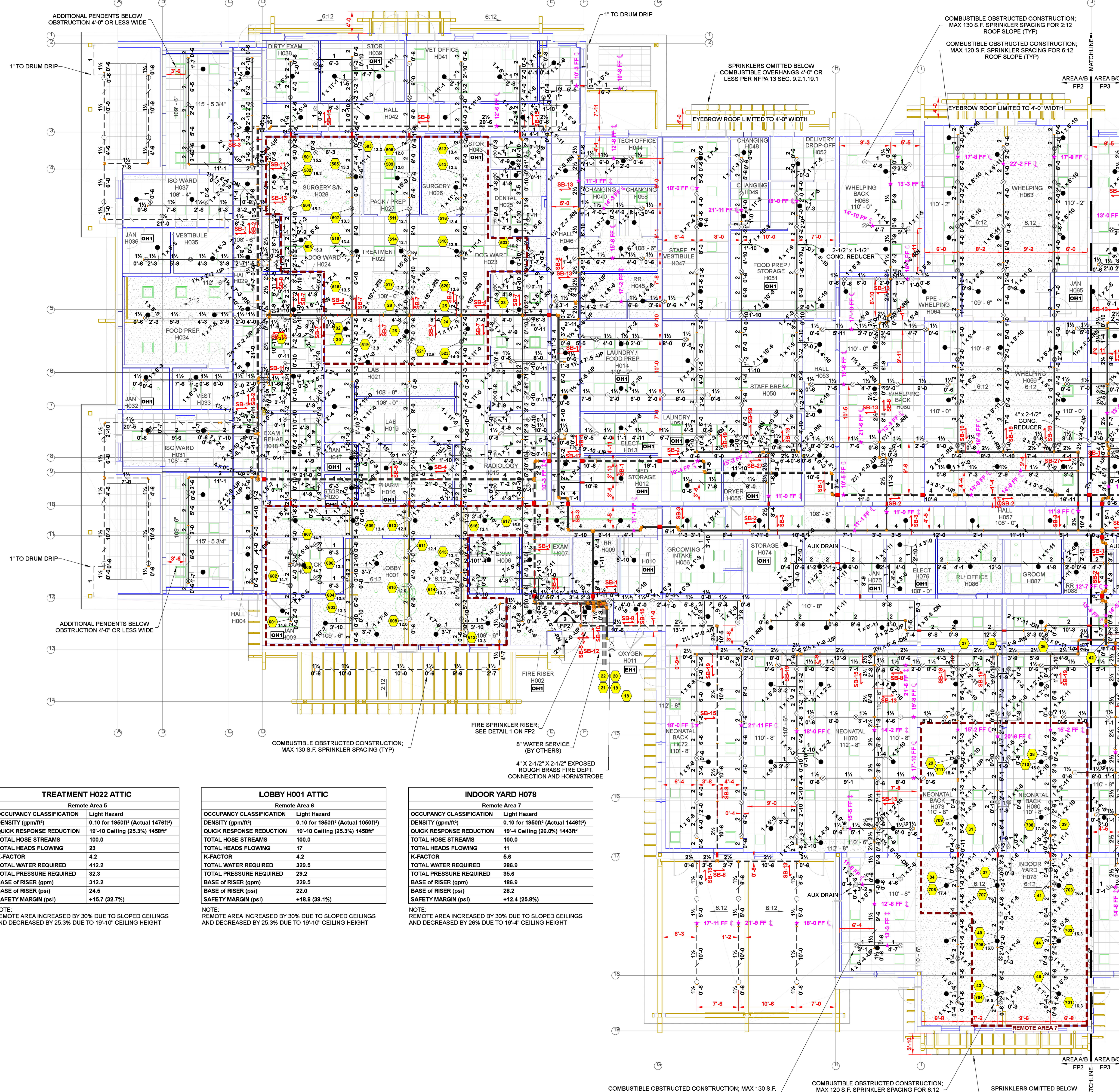
| Symbol | Manufacturer | SIN | Model | Quantity | K-Factor | Type | Size | Response | Finish | Temp | Note |
|--------|--------------|--------|----------------|-------------|----------|-------------------|------|----------|---------------|-------|-----------------------|
| ⊙ | Tyco | TY3235 | DS-1 | 7 | 5.6 | Pendent | 1 | Quick | Chrome | 200°F | STANDARD DRY |
| ⊙ | Tyco | TY3531 | Royal Flush II | 384 | 5.6 | Concealed Pendent | 1/2 | Quick | Brass | 200°F | WHITE PLATE CONCEALED |
| ⊙ | Tyco | TY2131 | TY-FRB | 34 | 4.2 | Upright | 1/2 | Quick | Natural Brass | 200°F | SPRIG |
| ⊙ | Tyco | TY2131 | TY-FRB | 471 | 4.2 | Upright | 1/2 | Quick | Natural Brass | 200°F | N/A |
| ⊙ | Tyco | TY3131 | TY-FRB | 79 | 5.6 | Upright | 1/2 | Quick | Natural Brass | 200°F | N/A |
| | | | | Total = 975 | | | | | | | |

FIRE SPRINKLER PLANS
FIRE SPRINKLER SITE PLAN AND DETAILS
LIBERTY DOGS - VET WHELPING
1215 DAMONTE RANCH PKWY
RENO, NV 89521
APN 140-010-55

| | |
|--------------|------------|
| DRAWN BY: | ADK |
| CHECKED BY: | RKS |
| DATE: | 12/12/2023 |
| PROJECT NO.: | #888 |
| SCALE: | AS NOTED |

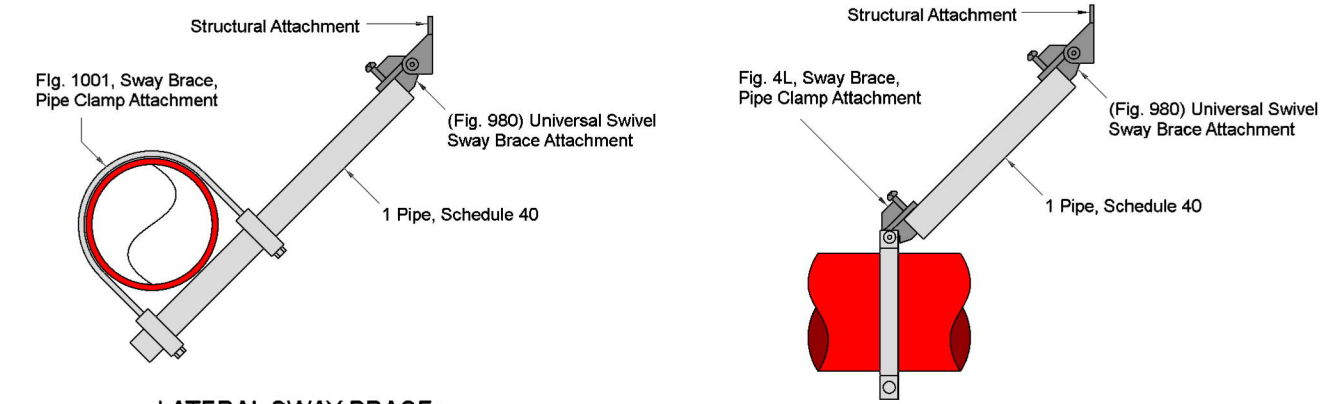
Sheet No:
FP1 OF 3

PRINTED ON 02/29/24 AT 14:34:00 Liberty Dogs Underground_OperatL_A523.dwg



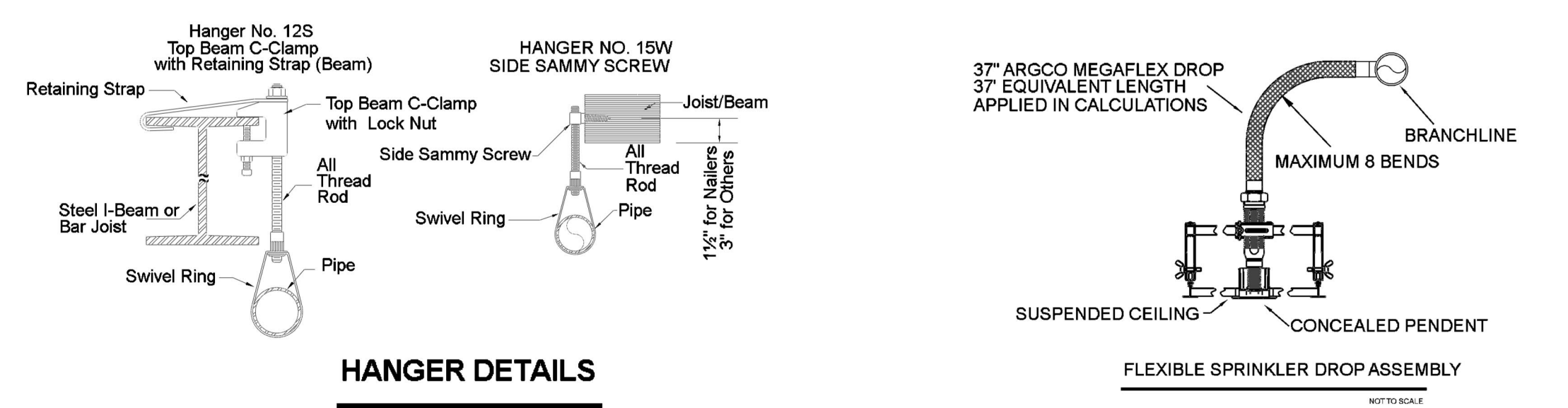
| Fire Riser Parts Legend | | | | |
|-------------------------|-------------------|---|----------|--|
| Key Note | Size | Description | Quantity | |
| 1 | 6 x 13 1/2 | Slip-On Weld, Slip Reducing Flange, Cl | 1 | |
| 2 | 6 | Flexible Coupling, Org, E Gasket | 1 | |
| 3 | 6 | Deringer 20, Backflow, DCVA, Butterfly, G-G | 1 | |
| 4 | 6 | Rigid Coupling, Org, E Gasket | 3 | |
| 5 | 6 | Grooved Short Radius, 90° Elbow, Di, Org | 1 | |
| 6 | 4 | Butterfly Valve, G-G - Normal Open | 3 | |
| 7 | 4 | Grv Riser Manifold | 2 | |
| 8 | 4 | Grooved Short Radius, 90° Elbow, Di, Org | 5 | |
| 9 | 4 | Grooved Short Radius Tee Org | 1 | |
| 10 | 4 | Butterfly Valve, G-G - Normal Closed | 3 | |
| 11 | 4 | Grooved Cap, Di, Org | 1 | |
| 12 | 4 | Swing Check Valve, G-G | 1 | |
| 13 | 4 x 1 x 4 | Drain Elbow, Di, Org | 1 | |
| 14 | 1 | Ball Drip | 1 | |
| 15 | 6 | Grooved Cap, Di, Org | 1 | |
| 16 | 4 | Flexible Coupling, Org, E Gasket | 4 | |
| 17 | 4 | Victaulic FireLock NXT 768N Dry Pipe Valve, G-G | 1 | |
| 18 | 4 | Rigid Coupling, Org, E Gasket | 18 | |
| 19 | xxx | General Air OLR N2/8033AC, Riser Mount Compressor | 1 | |
| 20 | 1 1/2 | Rigid Coupling, Org, E Gasket | 1 | |
| 21 | 1 1/2 | Grooved, 90° Elbow, Di, Org | 1 | |
| 22 | 1 1/2 | Flexible Coupling, Org, E Gasket | 1 | |
| 23 | 2 | Threaded, 90° Elbow, Di | 2 | |
| 24 | 2 x 2 x 1 | Threaded Reducing Tee, Di | 1 | |
| 25 | 1 | Threaded, 90° Elbow, Di | 1 | |
| 26 | 2 | Threaded Straight Tee, Di | 1 | |
| 27 | 2 | Threaded, 45° Elbow, MI, Galv | 1 | |
| 28 | 4 x 2 1/2 x 2 1/2 | Exposed, Rough Brass FDC | 1 | |

2 RISER DETAIL
SCALE: 1/2" = 1'-0"



- LATERAL SWAY BRACE:**
 SB-1 (4" PIPE) 40'-0" MAX SPACING
 SB-2 (4" PIPE) 30'-0" MAX SPACING
 SB-3 (4" PIPE) 30'-0" MAX SPACING
 SB-4 (4" PIPE) 30'-0" MAX SPACING
 SB-5 (4" PIPE) 30'-0" MAX SPACING
 SB-6 (4" PIPE) 30'-0" MAX SPACING
 SB-7 (4" PIPE) 30'-0" MAX SPACING
 SB-8 (4" PIPE) 30'-0" MAX SPACING
 SB-9 (4" PIPE) 30'-0" MAX SPACING
 SB-10 (4" PIPE) 30'-0" MAX SPACING
 SB-11 (2-1/2" PIPE) 40'-0" MAX SPACING
 SB-12 (2-1/2" PIPE) 25'-0" MAX SPACING
 SB-13 (2-1/2" PIPE) 25'-0" MAX SPACING
 SB-14 (2-1/2" PIPE) 25'-0" MAX SPACING
 SB-15 (2-1/2" PIPE) 25'-0" MAX SPACING
 SB-16 (2-1/2" PIPE) 25'-0" MAX SPACING
 SB-17 (4" PIPE) 18'-0" MAX SPACING
 SB-18 (2-1/2" PIPE) 14'-0" MAX SPACING
 SB-19 (2-1/2" PIPE) 14'-0" MAX SPACING
 SB-20 (2-1/2" PIPE) 20'-0" MAX SPACING
 SB-21 (2-1/2" PIPE) 40'-0" MAX SPACING
 SB-22 (2-1/2" PIPE) 25'-0" MAX SPACING
 SB-23 (2-1/2" PIPE) 20'-0" MAX SPACING
 SB-24 (2-1/2" PIPE) 40'-0" MAX SPACING
 SB-25 (4" PIPE) 30'-0" MAX SPACING
- SEISMIC BRANCH LINE RESTRAINT (Cp=0.87):**
 1" PIPE = 26'-0" MAX SPACING
 1-1/2" PIPE = 29'-0" MAX SPACING
 2" PIPE = 31'-0" MAX SPACING
- SEISMIC KEY:**
 LATERAL BRACE
 LONGITUDINAL BRACE
 BRANCH LINE RESTRAINT
- NOTE:**
 FOR 2-1/2" PIPE AND LARGER INSTALL ONE FLEXIBLE COUPLING AT TOP OF RISERS OVER 3'-0" AND TWO FLEXIBLE COUPLINGS AT TOP AND BOTTOM FOR RISERS OVER 7'-0"

SEISMIC DETAILS



HANGER DETAILS

| MAXIMUM DISTANCE BETWEEN HANGERS (FT.-IN.) | | | | | | | | | |
|--|------|------|--------|--------|------|--------|------|------|------|
| STEEL PIPE EXCEPT THREADED LIGHTWALL | 3/4" | 1" | 1 1/4" | 1 1/2" | 2" | 2 1/2" | 3" | 4" | 8" |
| NA | 12-0 | 12-0 | 15-0 | 15-0 | 15-0 | 15-0 | 15-0 | 15-0 | 15-0 |

| TREATMENT H022 ATTIC | |
|--------------------------|-----------------------------------|
| Remote Area 5 | |
| OCCUPANCY CLASSIFICATION | Light Hazard |
| DENSITY (ppm/ft³) | 0.10 for 1950ft³ (Actual 1476ft³) |
| QUICK RESPONSE REDUCTION | 19'-10 Ceiling (25.3%) 1458ft³ |
| TOTAL HOSE STREAMS | 100.0 |
| TOTAL HEADS FLOWING | 23 |
| K-FACTOR | 4.2 |
| TOTAL WATER REQUIRED | 412.2 |
| TOTAL PRESSURE REQUIRED | 32.3 |
| BASE OF RISER (gpm) | 312.2 |
| BASE OF RISER (psi) | 24.5 |
| SAFETY MARGIN (psi) | +15.7 (32.7%) |

| LOBBY H001 ATTIC | |
|--------------------------|-----------------------------------|
| Remote Area 6 | |
| OCCUPANCY CLASSIFICATION | Light Hazard |
| DENSITY (ppm/ft³) | 0.10 for 1950ft³ (Actual 1050ft³) |
| QUICK RESPONSE REDUCTION | 19'-10 Ceiling (25.3%) 1458ft³ |
| TOTAL HOSE STREAMS | 100.0 |
| TOTAL HEADS FLOWING | 17 |
| K-FACTOR | 4.2 |
| TOTAL WATER REQUIRED | 329.5 |
| TOTAL PRESSURE REQUIRED | 29.2 |
| BASE OF RISER (gpm) | 229.5 |
| BASE OF RISER (psi) | 22.0 |
| SAFETY MARGIN (psi) | +18.8 (39.1%) |

| INDOOR YARD H078 | |
|--------------------------|-----------------------------------|
| Remote Area 7 | |
| OCCUPANCY CLASSIFICATION | Light Hazard |
| DENSITY (ppm/ft³) | 0.10 for 1950ft³ (Actual 1446ft³) |
| QUICK RESPONSE REDUCTION | 19'-4 Ceiling (26.0%) 1443ft³ |
| TOTAL HOSE STREAMS | 100.0 |
| TOTAL HEADS FLOWING | 11 |
| K-FACTOR | 5.6 |
| TOTAL WATER REQUIRED | 296.9 |
| TOTAL PRESSURE REQUIRED | 35.6 |
| BASE OF RISER (gpm) | 196.9 |
| BASE OF RISER (psi) | 28.2 |
| SAFETY MARGIN (psi) | +12.4 (25.8%) |

NOTE: REMOTE AREA INCREASED BY 30% DUE TO SLOPED CEILING AND DECREASED BY 25.3% DUE TO 19'-10" CEILING HEIGHT

NOTE: REMOTE AREA INCREASED BY 30% DUE TO SLOPED CEILING AND DECREASED BY 25.3% DUE TO 19'-10" CEILING HEIGHT

NOTE: REMOTE AREA INCREASED BY 30% DUE TO SLOPED CEILING AND DECREASED BY 26% DUE TO 19'-4" CEILING HEIGHT

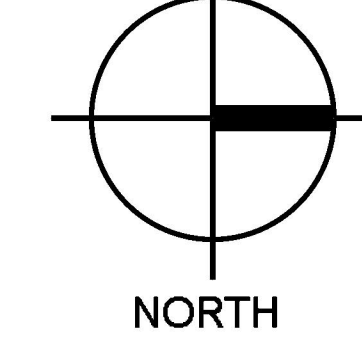
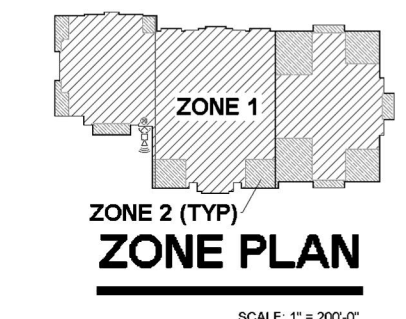
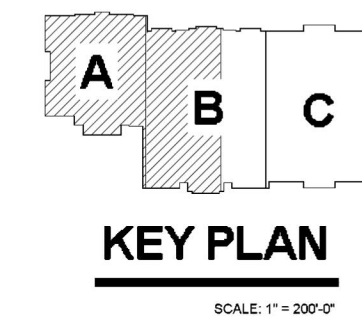
AHJ APPROVAL BOX

DATE:

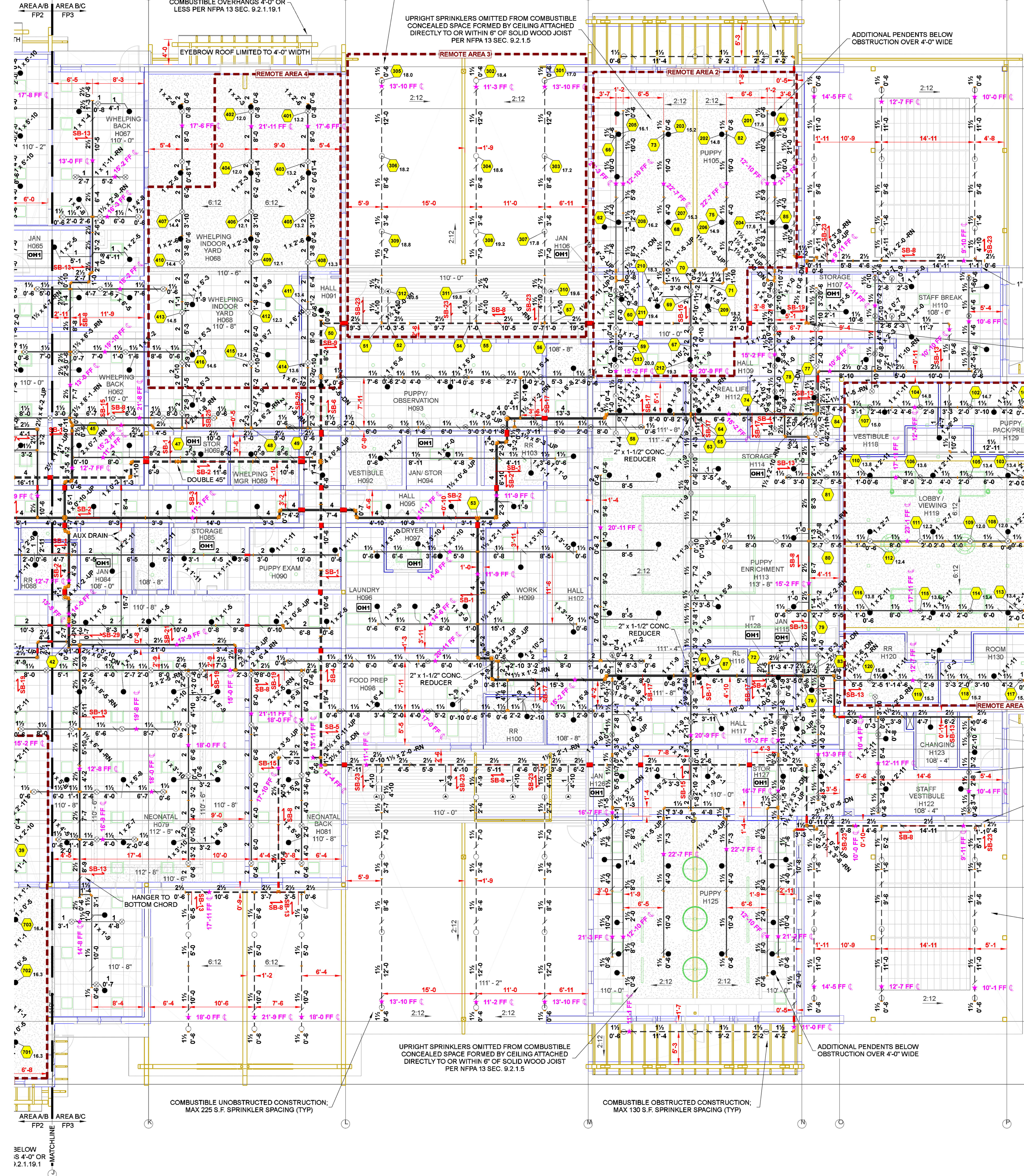
FIRE SPRINKLER PLANS
AREA A/B FIRE SPRINKLER PLAN
LIBERTY DOGS - VET WHELPING
1215 DAMONTE RANCH PKWY
RENO, NV 89521
APN 140-010-55

| | |
|--------------|--------------|
| DRAWN BY: | ADR |
| CHECKED BY: | RKS |
| DATE: | 2-24-2024 |
| PROJECT NO.: | #xxx |
| SCALE: | 1/8" = 1'-0" |
| Sheet No.: | |

| Liberty Dogs Vet Whelping - Sprinkler Legend | | | | | | | | | | | |
|--|--------------|--------|----------------|----------|----------|-------------------|------|----------|---------------|-------|-----------------------|
| Symbol | Manufacturer | SIN | Model | Quantity | K-Factor | Type | Size | Response | Finish | Temp | Note |
| ● | Tyco | TY3235 | DS-1 | 7 | 5.6 | Pendent | 1 | Quick | Chrome | 200°F | STANDARD DRY |
| ○ | Tyco | TY3531 | Royal Flush II | 384 | 5.6 | Concealed Pendent | 1/2 | Quick | Brass | 200°F | WHITE PLATE CONCEALED |
| ○ | Tyco | TY2131 | TY-FRB | 34 | 4.2 | Upright | 1/2 | Quick | Natural Brass | 200°F | SPRIG |
| ○ | Tyco | TY2131 | TY-FRB | 471 | 4.2 | Upright | 1/2 | Quick | Natural Brass | 200°F | N/A |
| ○ | Tyco | TY3131 | TY-FRB | 79 | 5.6 | Upright | 1/2 | Quick | Natural Brass | 200°F | N/A |
| | | | | Total = | 975 | | | | | | |



SECTION:
12:12
SECTION:
16:12



1 AREA B/C FIRE SPRINKLER PLAN
1/8" = 1 Foot

WHELPING INDOOR YARD H088 ATTIC

| | |
|--------------------------------|--|
| Remote Area 4 | |
| OCCUPANCY CLASSIFICATION | Light Hazard |
| DENSITY (gpm/ft ²) | 0.10 for 1950ft ² (Actual 1336ft ²) |
| QUICK RESPONSE REDUCTION | 14'-0" Ceiling (34.0%) 1287ft ² |
| TOTAL HOSE STREAMS | 100.0 |
| TOTAL HEADS FLOWING | 16 |
| K-FACTOR | 4.2 |
| TOTAL WATER REQUIRED | 310.6 |
| TOTAL PRESSURE REQUIRED | 37.1 |
| BASE OF RISER (gpm) | 210.6 |
| BASE OF RISER (psi) | 30.0 |
| SAFETY MARGIN (psi) | +10.9 (22.7%) |

NOTE: REMOTE AREA INCREASED BY 30% DUE TO SLOPED CEILINGS AND DECREASED BY 34% DUE TO 14'-0" CEILING HEIGHT

PUPPY H105 OUTDOOR

| | |
|--------------------------------|--|
| Remote Area 3 | |
| OCCUPANCY CLASSIFICATION | Light Hazard |
| DENSITY (gpm/ft ²) | 0.10 for 1950ft ² (Actual 1710ft ²) |
| TOTAL HOSE STREAMS | 100.0 |
| DRY CAPACITY | 523gal |
| TOTAL HEADS FLOWING | 12 |
| K-FACTOR | 5.6 |
| TOTAL WATER REQUIRED | 323.0 |
| TOTAL PRESSURE REQUIRED | 37.1 |
| BASE OF RISER (gpm) | 223.0 |
| BASE OF RISER (psi) | 28.9 |
| SAFETY MARGIN (psi) | +10.9 (22.7%) |

NOTE: REMOTE AREA INCREASED BY 30% DUE TO DRY SYSTEM; ENTIRE DRY AREA CALCULATED

PUPPY H105

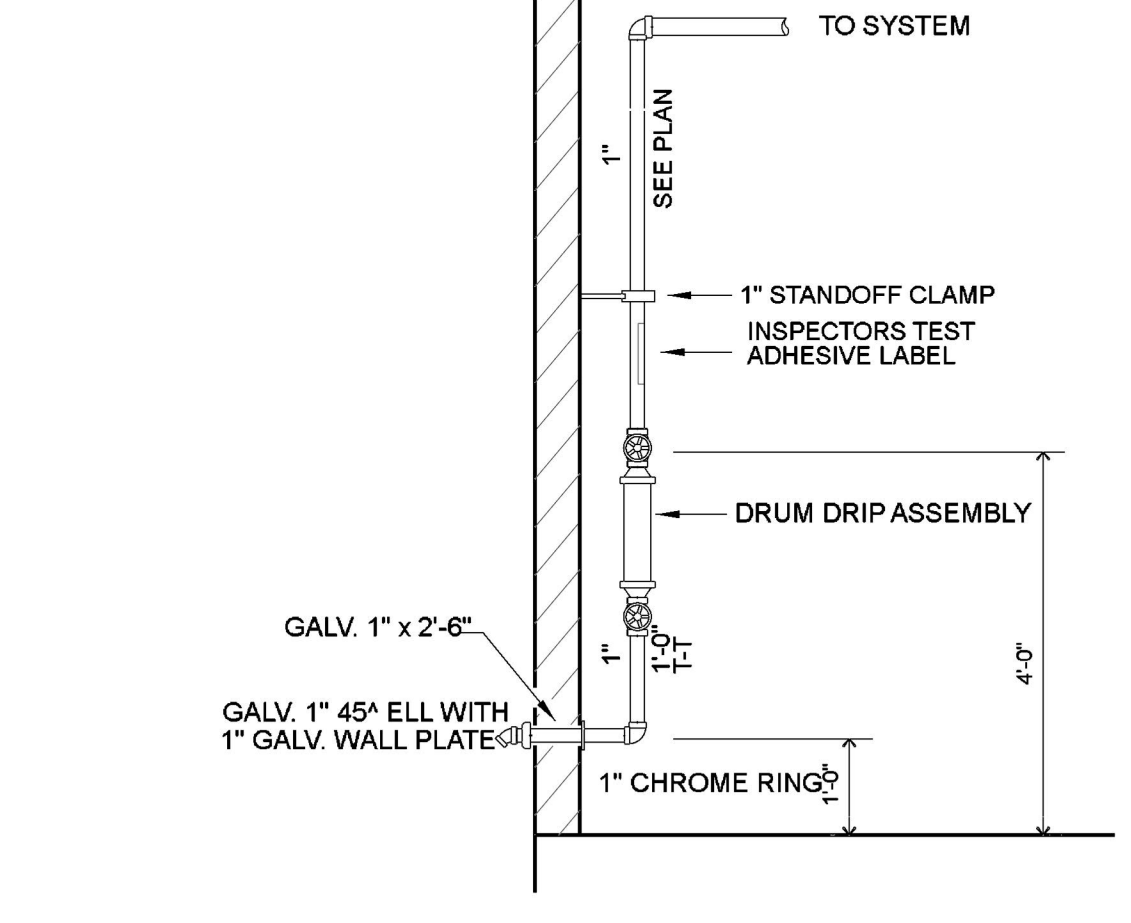
| | |
|--------------------------------|--|
| Remote Area 2 | |
| OCCUPANCY CLASSIFICATION | Light Hazard |
| DENSITY (gpm/ft ²) | 0.10 for 1950ft ² (Actual 1416ft ²) |
| TOTAL HOSE STREAMS | 100.0 |
| TOTAL HEADS FLOWING | 13 |
| K-FACTOR | 5.6 |
| TOTAL WATER REQUIRED | 322.7 |
| TOTAL PRESSURE REQUIRED | 35.7 |
| BASE OF RISER (gpm) | 222.7 |
| BASE OF RISER (psi) | 28.5 |
| SAFETY MARGIN (psi) | +12.3 (25.6%) |

NOTE: ROOM DESIGN PER NFPA 13 SEC. 19.3.3.3(2)

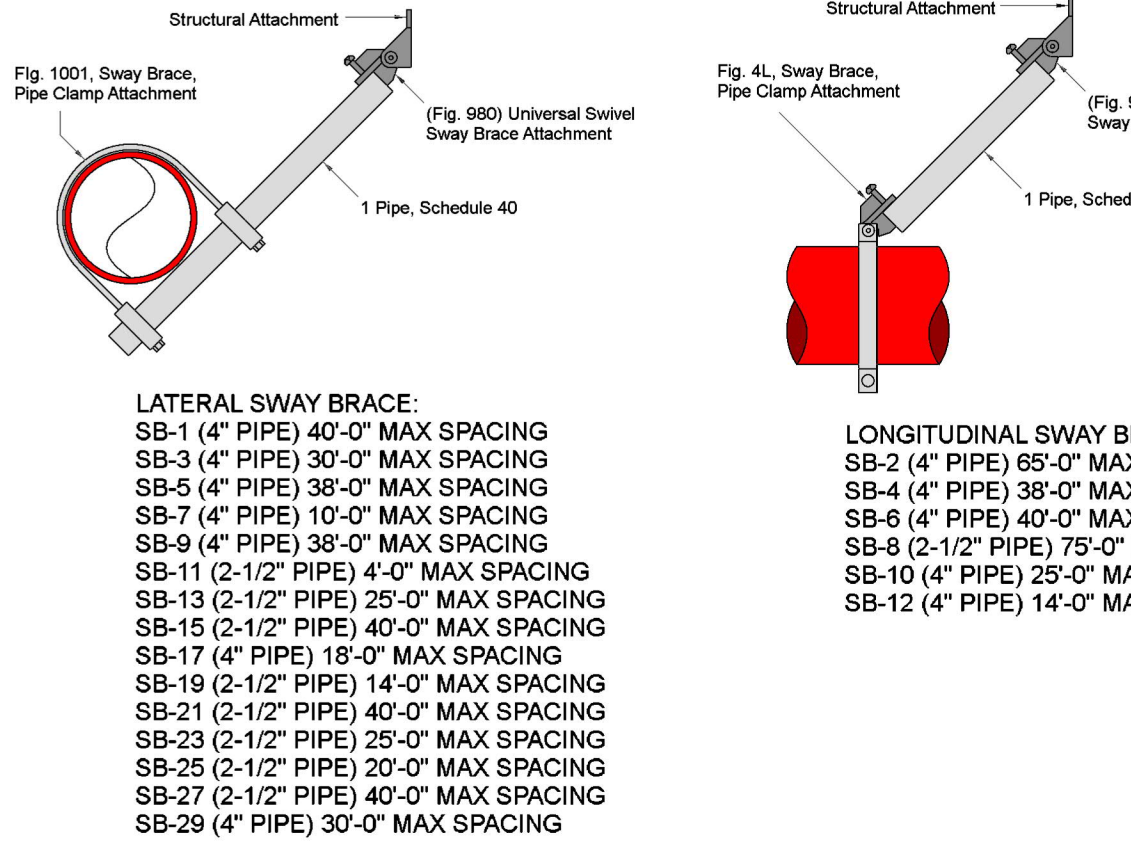
LOBBY/VIEWING H119 ATTIC

| | |
|--------------------------------|--|
| Remote Area 1 | |
| OCCUPANCY CLASSIFICATION | Light Hazard |
| DENSITY (gpm/ft ²) | 0.10 for 1950ft ² (Actual 1555ft ²) |
| TOTAL HOSE STREAMS | 100.0 |
| TOTAL HEADS FLOWING | 20 |
| K-FACTOR | 4.2 |
| TOTAL WATER REQUIRED | 377.2 |
| TOTAL PRESSURE REQUIRED | 34.9 |
| BASE OF RISER (gpm) | 247.2 |
| BASE OF RISER (psi) | 27.4 |
| SAFETY MARGIN (psi) | +13.1 (27.2%) |

NOTE: ROOM DESIGN PER NFPA 13 SEC. 19.3.3.3. FULL HEIGHT WALLS LOCATED AT REMOTE AREA BOUNDARY; ALL IN COMPARTMENT CALCULATED



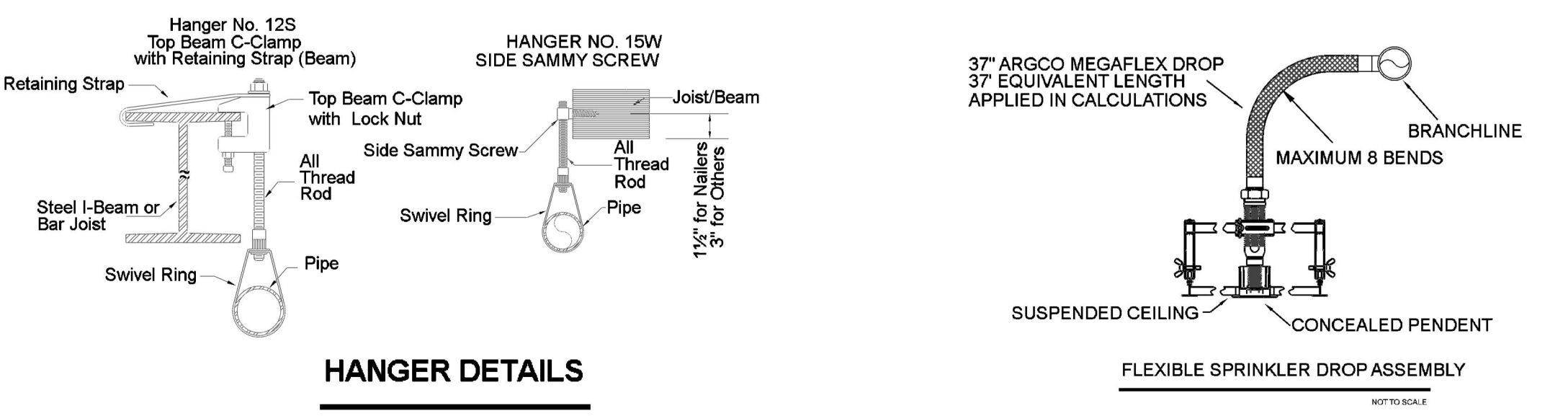
DRY SYSTEM INSPECTORS TEST DETAIL
SEE ROOF PLAN FOR LOCATION
NOT TO SCALE



SEISMIC BRANCH LINE RESTRAINT
1" PIPE = 26" MAX SPACING
1-1/2" PIPE = 29" MAX SPACING
2" PIPE = 31" MAX SPACING

SEISMIC KEY:
LATERAL BRACE SB-1 to SB-19
LONGITUDINAL BRACE SB-2 to SB-12
BRANCH LINE RESTRAINT SB-20 to SB-22

NOTE: FOR 2-1/2" PIPE AND LARGER INSTALL ONE FLEXIBLE COUPLING AT TOP OF RISERS OVER 10'-0" AND TWO FLEXIBLE COUPLINGS AT TOP AND BOTTOM FOR RISERS OVER 7'-0"

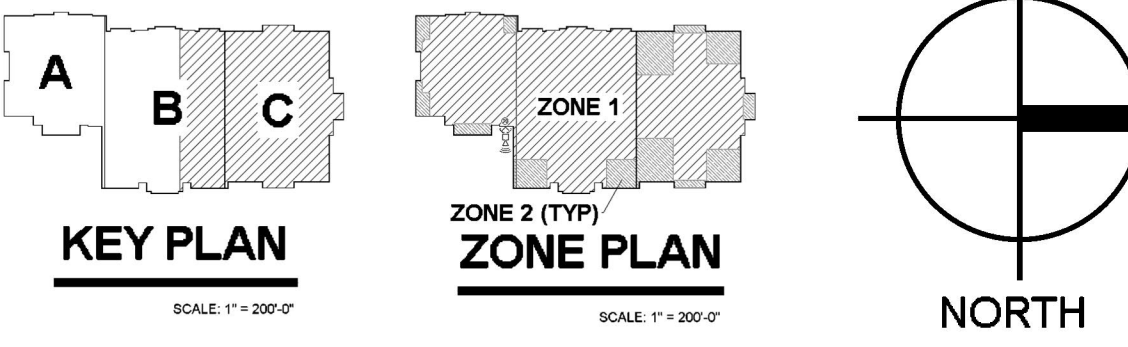


MAXIMUM DISTANCE BETWEEN HANGERS (FT.-IN.)

| STEEL PIPE EXCEPT THREADED LIGHTWALL | 3/4" | 1" | 1 1/4" | 1 1/2" | 2" | 2 1/2" | 3" | 4" | 6" | 8" |
|--------------------------------------|------|------|--------|--------|------|--------|------|------|------|------|
| | NA | 12-0 | 12-0 | 15-0 | 15-0 | 15-0 | 15-0 | 15-0 | 15-0 | 15-0 |

Liberty Dogs Vet Whelping - Sprinkler Legend

| Symbol | Manufacturer | SIN | Model | Quantity | K-Factor | Type | Size | Response | Finish | Temp | Note |
|--------|--------------|--------|----------------|-------------|----------|-------------------|------|----------|---------------|-------|-----------------------|
| ● | Tyco | TY3235 | DS-1 | 7 | 5.6 | Pendent | 1" | Quick | Chrome | 200°F | STANDARD DRY |
| ○ | Tyco | TY3531 | Royal Flush II | 384 | 5.6 | Concealed Pendent | 1/2" | Quick | Brass | 200°F | WHITE PLATE CONCEALED |
| ⊗ | Tyco | TY2131 | TY-FRB | 34 | 4.2 | Upright | 1/2" | Quick | Natural Brass | 200°F | SPRIG |
| ⊙ | Tyco | TY2131 | TY-FRB | 471 | 4.2 | Upright | 1/2" | Quick | Natural Brass | 200°F | N/A |
| ○ | Tyco | TY3131 | TY-FRB | 79 | 5.6 | Upright | 1/2" | Quick | Natural Brass | 200°F | N/A |
| | | | | Total = 975 | | | | | | | |



AHJ APPROVAL BOX

FIRE SPRINKLER PLANS
AREA B/C FIRE SPRINKLER PLAN
LIBERTY DOGS - VET WHELPING
1215 DAMONITE RANCH PKWY
RENO, NV 89521
APN 140-010-55

DRAWN BY: ADK
CHECKED BY: RRS
DATE: 2-24-2024
PROJECT NO: #xxx
SCALE: 1/8" = 1'-0"
Sheet No:
FP3 OF 3