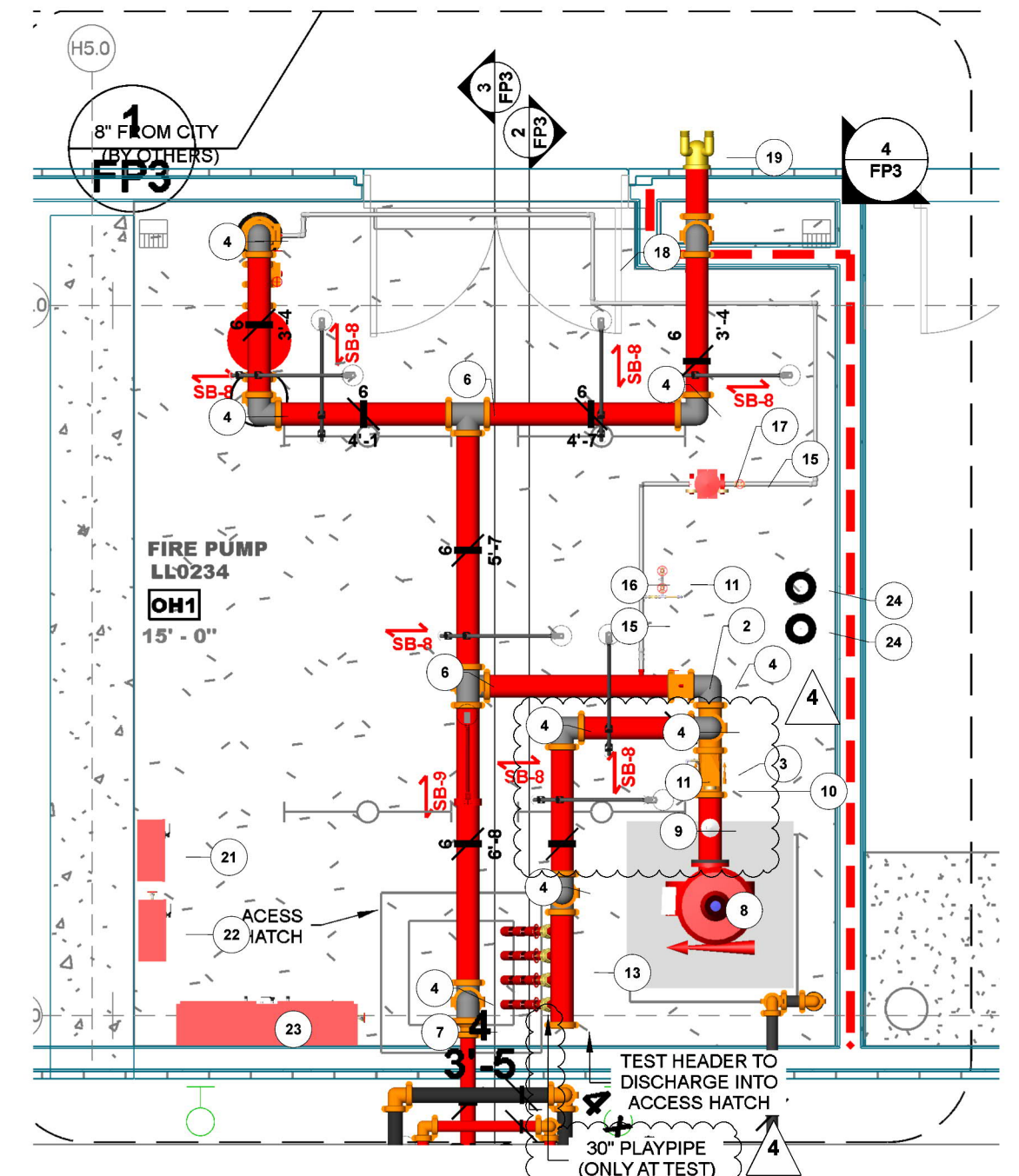
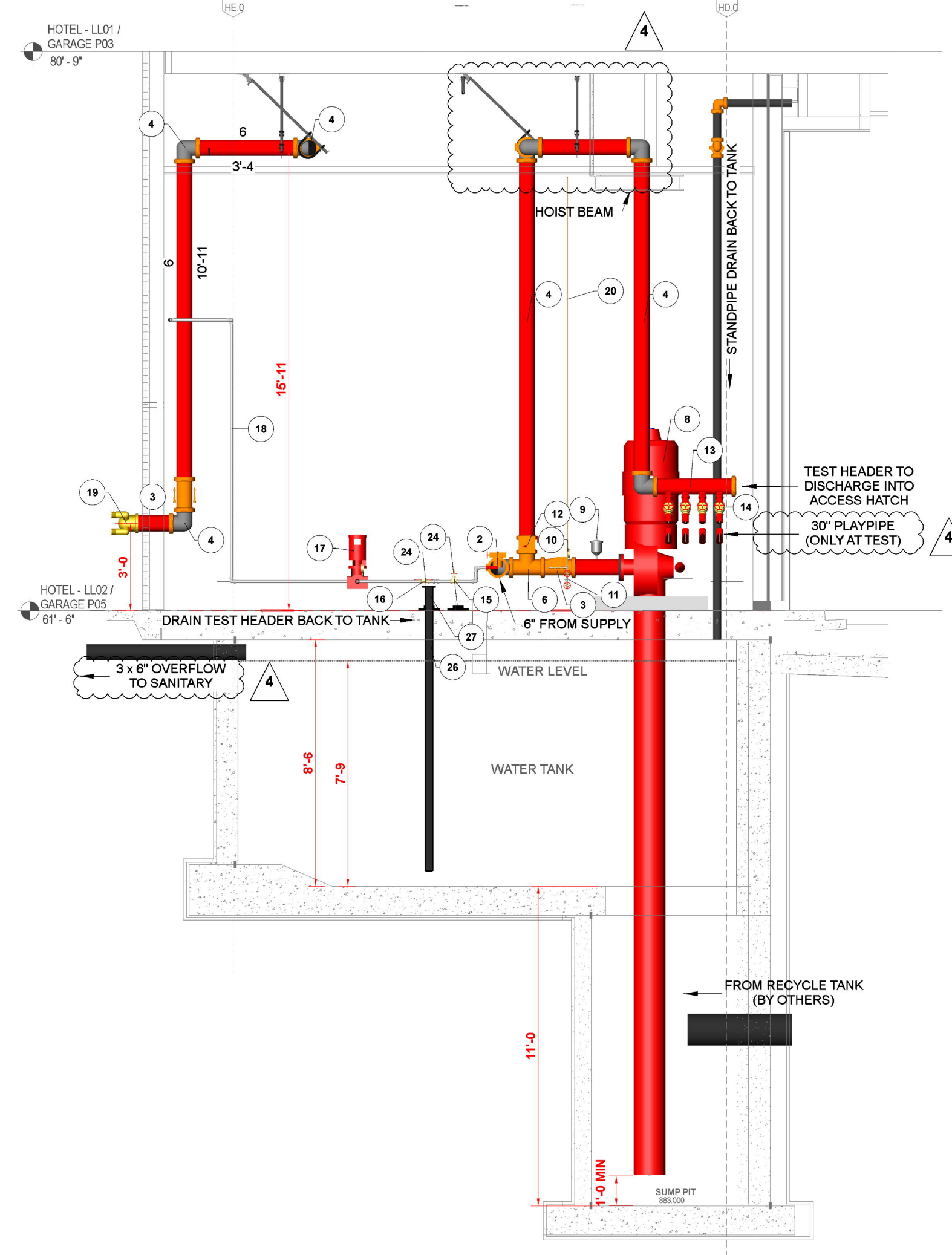


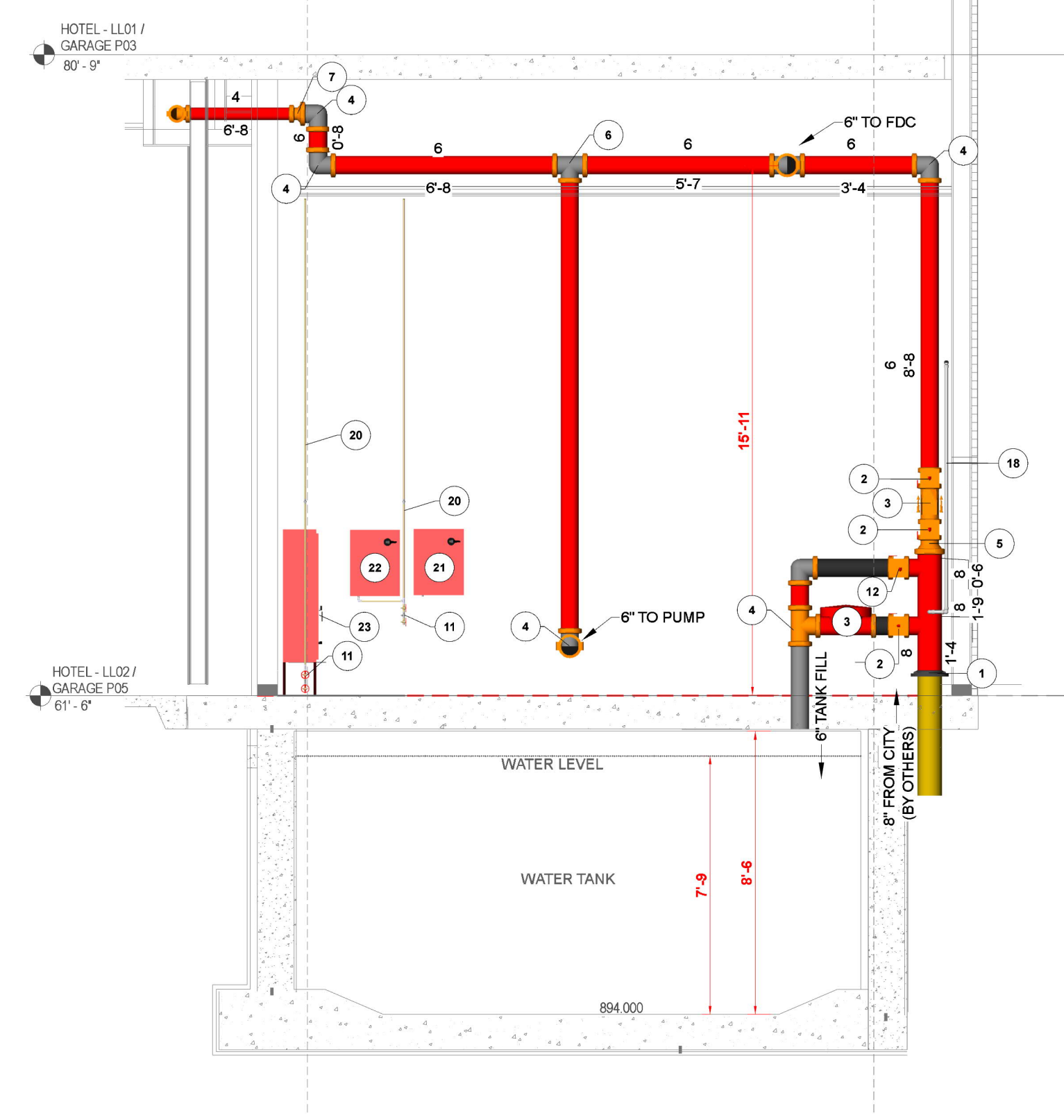
**LOWER LEVEL 02 FIRE SPRINKLER BULK PIPING PLAN**  
 FFE = 61'-6"  
 NORTH  
 SCALE: 1/8" = 1'-0"



**FIRE PUMP ROOM**  
 FFE = 61'-6"  
 SCALE: 1/4" = 1'-0"



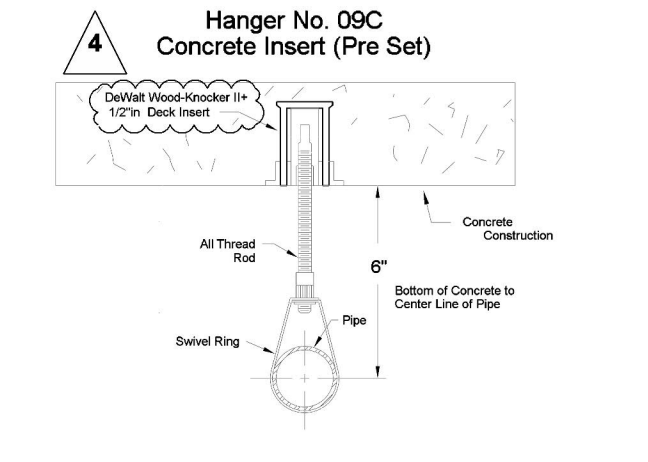
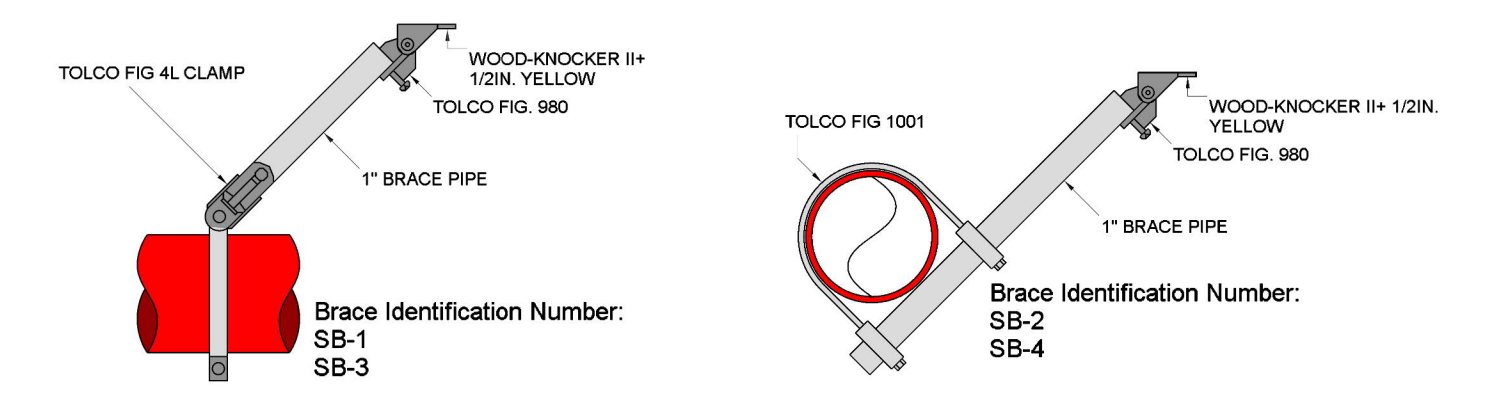
**FIRE PUMP ROOM SECTION**  
 FFE = 61'-6"  
 SCALE: 1/4" = 1'-0"



**FIRE PUMP ROOM SECTION**  
 FFE = 61'-6"  
 SCALE: 1/4" = 1'-0"

**FIRE WALL LEGEND**

1HR	---
2HR	---
3HR	---



**HANGER DETAILS**

**SEISMIC KEY:**

LATERAL BRACE	SB-1
LONGITUDINAL BRACE	SB-2
BRANCH LINE RESTRAINT	SB-3

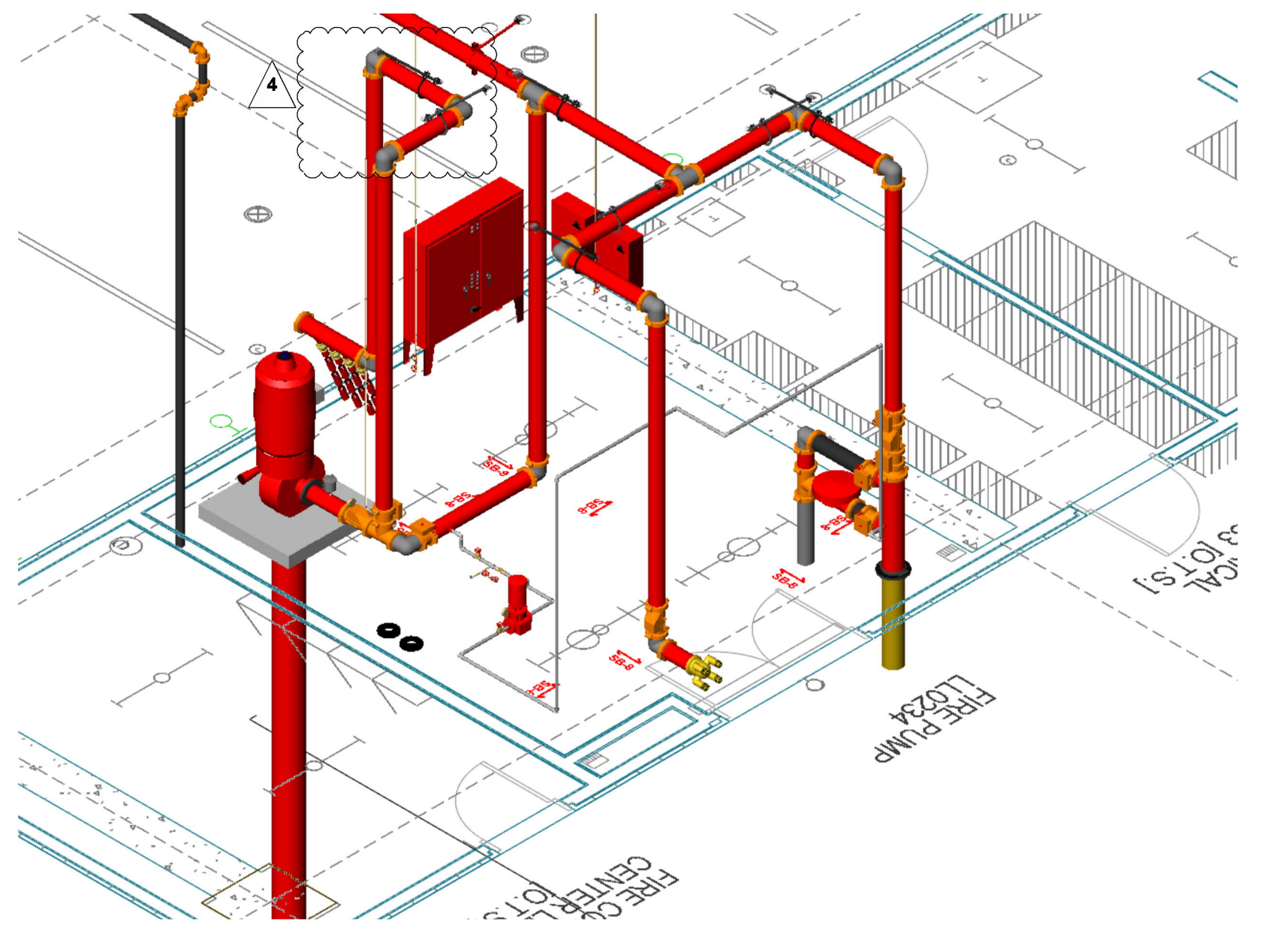
**SEISMIC BRANCH LINE RESTRAINT**  
 (Cp=0.42)  
 1" PIPE = 43'-0" MAX SPACING  
 1-1/4" PIPE = 46'-0" MAX SPACING  
 1-1/2" PIPE = 49'-0" MAX SPACING  
 2" PIPE = 53'-0" MAX SPACING

**NOTE:**  
 1. BRANCHLINE HANGER RODS ARE LESS THAN 6" IN LENGTH. PER NFPA 13 9.3.6.5 NO ADDITIONAL RESTRAINT SHALL BE REQUIRED FOR THE BRANCHLINES.  
 2. MAIN AND BRANCHLINE HANGER RODS ARE LESS THAN 6" LATERAL SWAY BRACING OMITTED PER NFPA 13 9.3.5.10.  
 3. TOLCO FIG 25 SURGE RESTRAINER TO BE PROVIDED AT THE LAST HANGER ON BRANCHLINE.

**SEISMIC DETAILS**

**MAXIMUM DISTANCE BETWEEN HANGERS (FT.-IN.)**

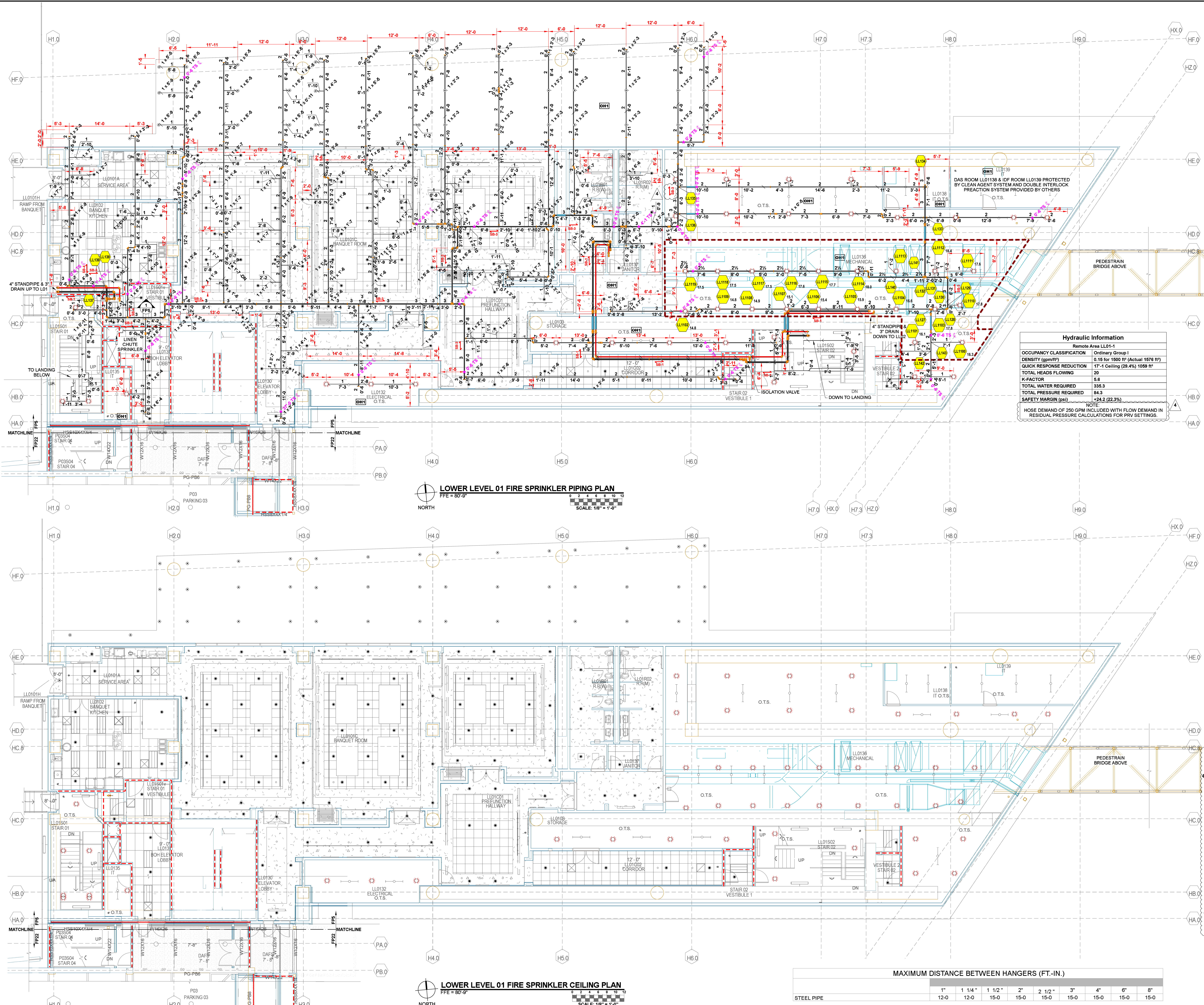
STEEL PIPE	1"	1 1/4"	1 1/2"	2"	2 1/2"	3"	4"	6"	8"
	12-0	12-0	15-0	15-0	15-0	15-0	15-0	15-0	15-0



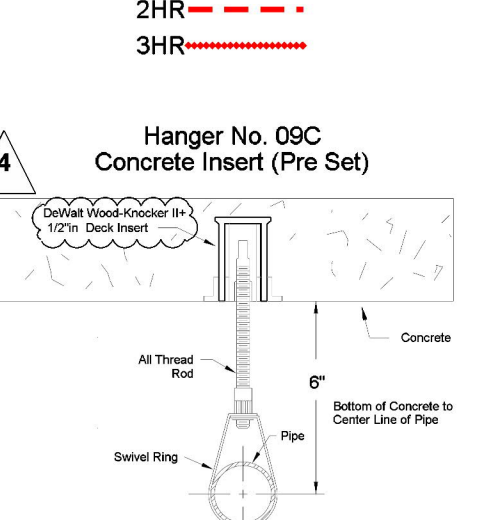
**FIRE PUMP ROOM ISOMETRIC**  
 FFE = 61'-6"  
 N.T.S.

**Parts Legend**

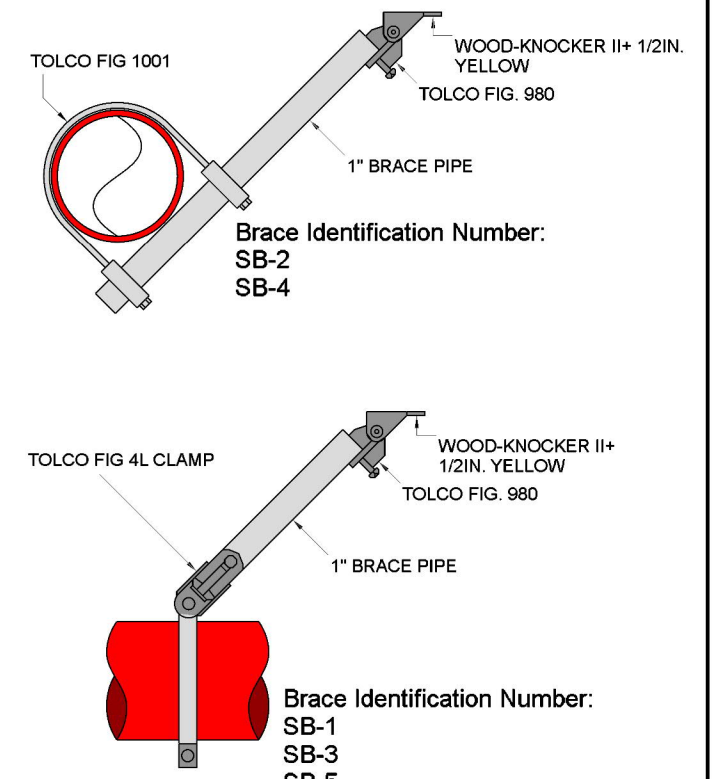
Key Note	Size	Description	Quantity
1	8	FLANGE X GROOVE ADAPTER	1
2	6	GROOVED BUTTERFLY VALVE SUPERVISED OPEN	4
3	6	GROOVED CHECK VALVE	4
4	6	GROOVED 90° EL	12
5	8 X 6	GROOVED CONC. REDUCER	1
6	6	GROOVED TEE	2
7	6 X 4	GROOVED CONC. REDUCER	1
8	6	1,000 GPM @ 220 PSI VERTICAL TURBINE FIRE PUMP	1
9	N/A	AUTOMATIC AIR RELEASE	1
10	1/2	DISCHARGE GAUGE	1
11	1/2	TEST ASSEMBLY	4
12	6	GROOVED BUTTERFLY VALVE SUPERVISED CLOSED	1
13	6	TEST HEADER	1
14	2 1/2	GROOVED BUTTERFLY VALVE	3
15	1 1/2	GATE VALVE	2
16	1 1/2	CHECK VALVE	1
17	N/A	JOCKEY PUMP	1
18	1 1/2	JOCKEY PUMP PIPING	N/A
19	6 X 2 1/2 X 2 1/2 X 2 1/2	FOUR WAY FDC	1
20	1/2	SENSING LINE	N/A
21	N/A	DISCONNECT	1
22	N/A	JOCKEY PUMP CONTROLLER	1
23	N/A	FIRE PUMP CONTROLLER W/ TRANSFER SWITCH	1
24	N/A	WARRICK SERIES 3F PROBE CONTROL UNIT	2
25	N/A	PIPE STAND	1
26	3"	STILLING WELL	1
27	1"	STILLING WELL VENT	1



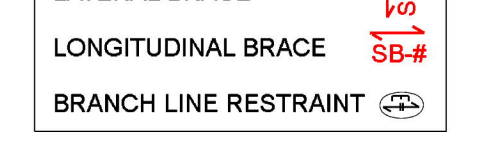
**FIRE WALL LEGEND**



**HANGER DETAILS**



**SEISMIC KEY:**



**SEISMIC BRANCH LINE RESTRAINT**  
 (Cp=0.42)  
 1-1/4" PIPE = 48'-0" MAX SPACING  
 1-1/2" PIPE = 49'-0" MAX SPACING  
 2" PIPE = 53'-0" MAX SPACING

**SEISMIC DETAILS**

- NOTE:  
 1. BRANCHLINE HANGER RODS ARE LESS THAN 6" IN LENGTH, PER NFPA 13 9.3.6.5 NO ADDITIONAL RESTRAINT SHALL BE REQUIRED FOR THE BRANCHLINES.  
 2. MAIN AND BRANCHLINE HANGER RODS ARE LESS THAN 6" LATERAL SWAY BRACING OMITTED PER NFPA 13 9.3.5.5.10.  
 3. TOLOCO FIG 25 SURGE RESTRAINER TO BE PROVIDED AT THE LAST HANGER ON BRANCHLINE.

**Hydraulic Information**  
 Remote Area LL01-1

OCCUPANCY CLASSIFICATION	Ordinary Group I
DENSITY (gpm/ft <sup>2</sup> )	0.15 for 1500 ft <sup>2</sup> (Actual 1576 ft <sup>2</sup> )
QUIKX RESPONSE REDUCTION	17'-1 Ceiling (29.4%) 1059 ft <sup>2</sup>
TOTAL HEADS FLOWING	20
K-FACTOR	5.6
TOTAL WATER REQUIRED	335.3
TOTAL PRESSURE REQUIRED	84.3
SAFETY MARGIN (psi)	+24.2 (28.3%)

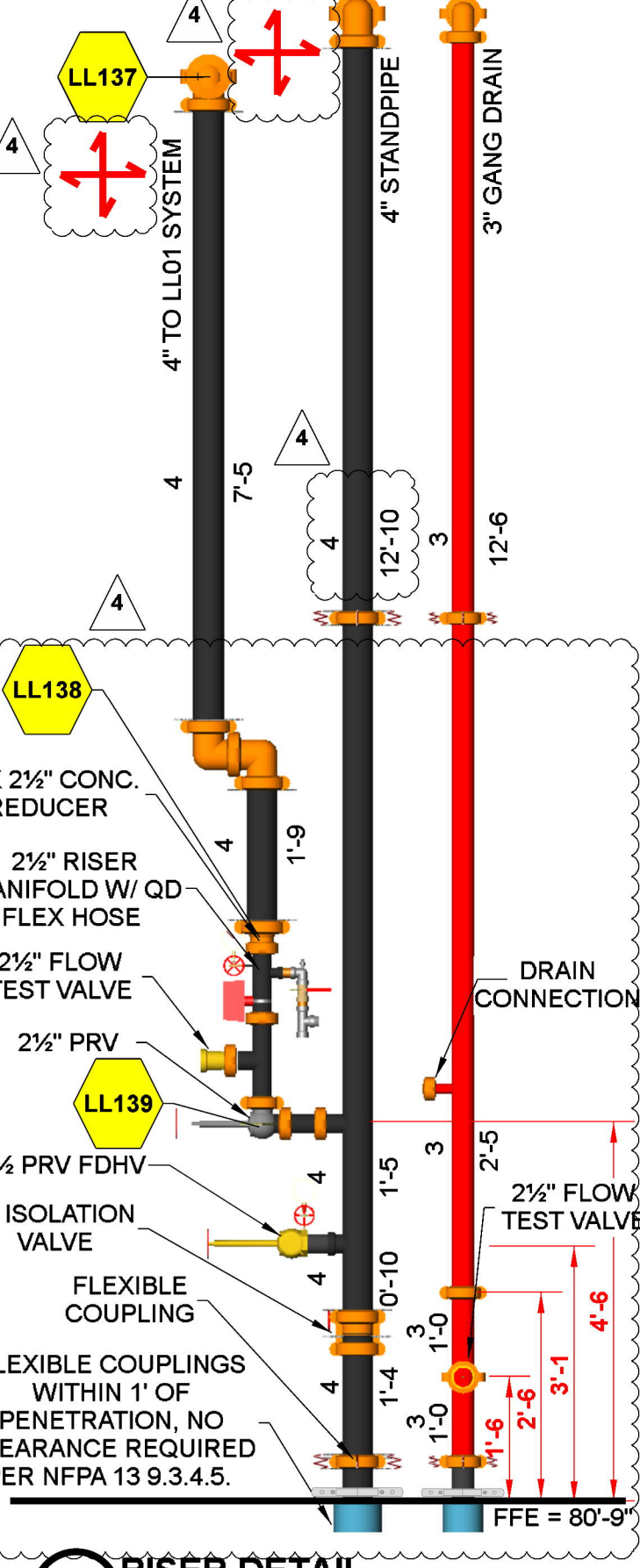
NOTE:  
 HOSE DEMAND OF 250 GPM INCLUDED WITH FLOW DEMAND IN RESIDUAL PRESSURE CALCULATIONS FOR PRV SETTINGS.

**LOWER LEVEL 01 FIRE SPRINKLER PIPING PLAN**  
 FFE = 80'-9"  
 NORTH  
 SCALE: 1/8" = 1'-0"

**PRV SETTING**

SETTING	STATIC	RESIDUAL
160	160	98

SEE FPI FOR INLET PRESSURES



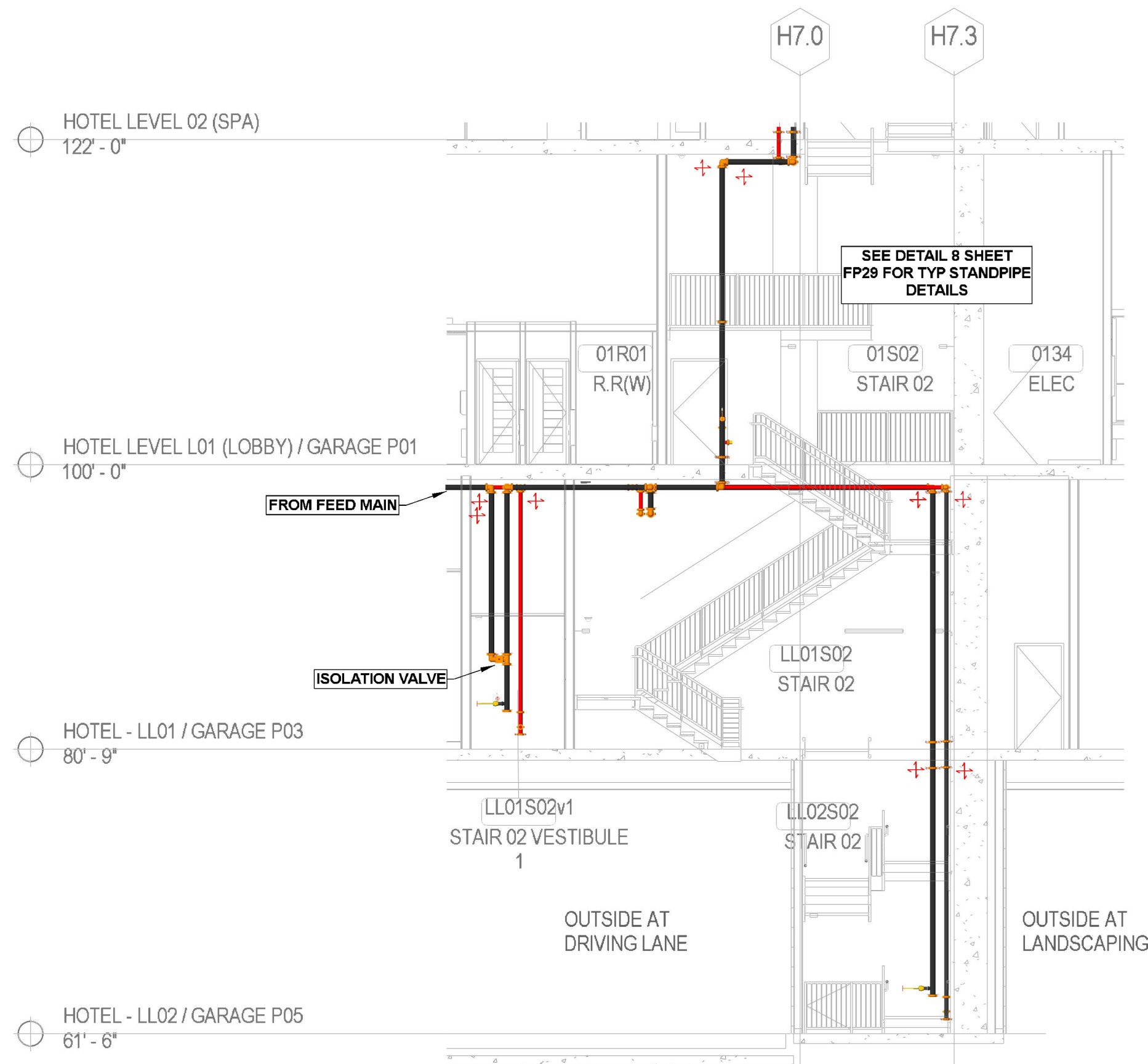
**1 RISER DETAIL**  
 SCALE: 1/2" = 1'-0"  
 SCALE: 1/2" = 1'-0"

**MAXIMUM DISTANCE BETWEEN HANGERS (FT.-IN.)**

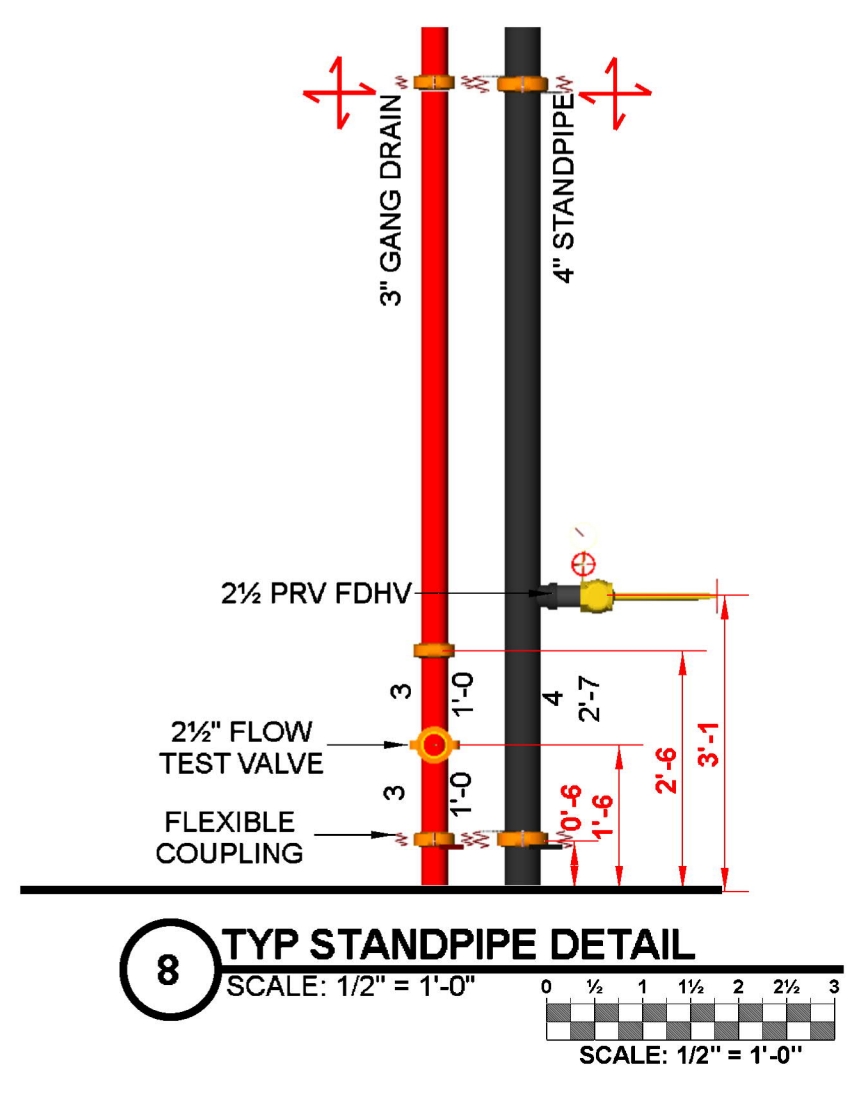
PIPE SIZE	1"	1 1/4"	1 1/2"	2"	2 1/2"	3"	4"	6"	8"
STEEL PIPE	12-0	12-0	15-0	15-0	15-0	15-0	15-0	15-0	15-0

**LOWER LEVEL 01 FIRE SPRINKLER CEILING PLAN**  
 FFE = 80'-9"  
 NORTH  
 SCALE: 1/8" = 1'-0"

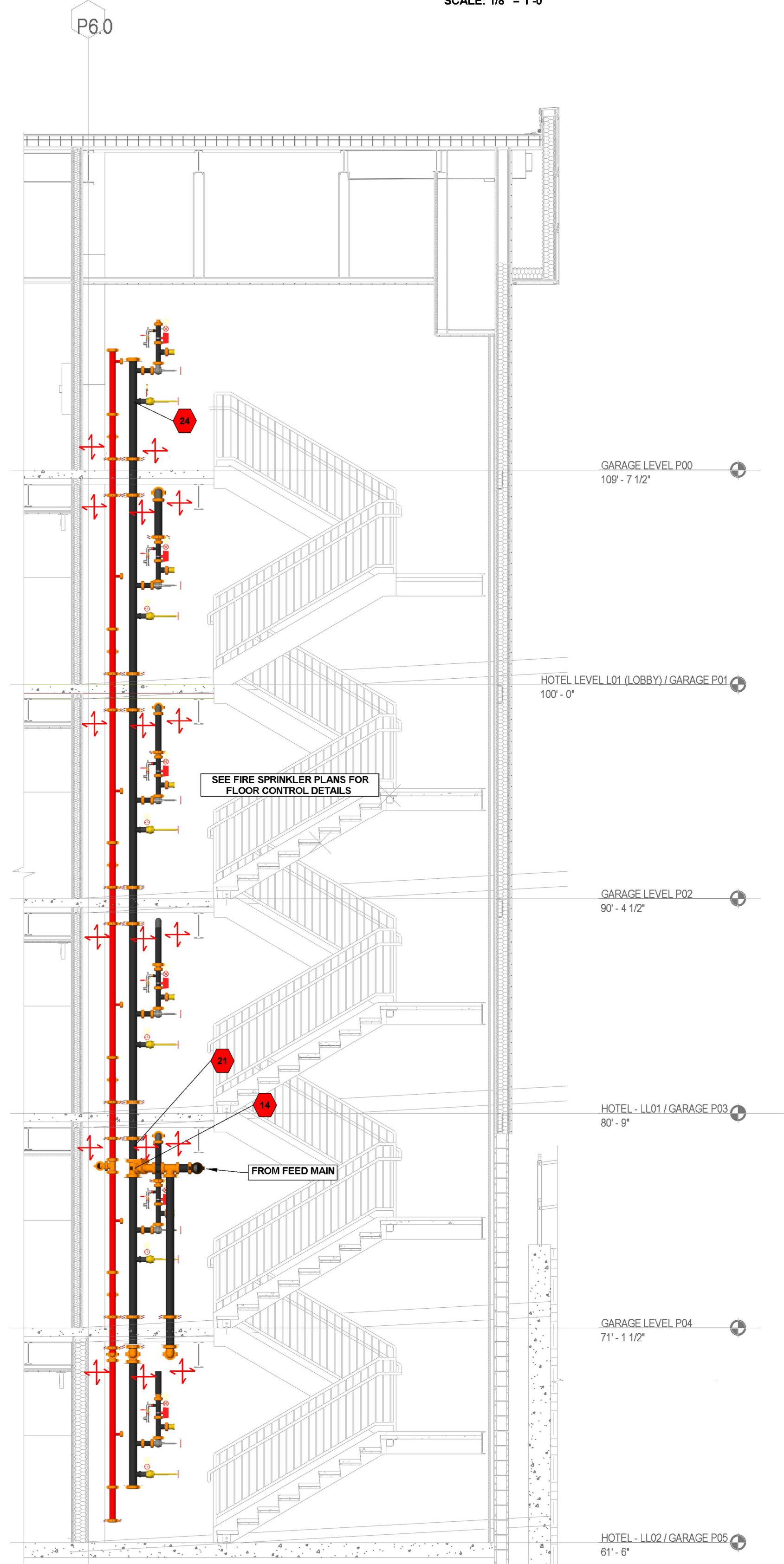
**PROJECT:** JAMUL CASINO HOTEL  
**LOCATION:** 14191 HIGHWAY 94  
 JAMUL, CA 91935  
**TITLE:** LEVEL LL01 FIRE SPRINKLER PLAN  
**JOB NO.:**  
**SCALE:** PER PLAN  
**DRAWN BY:** JCG  
**DATE:** 02/19/24  
**SHEET:** 5 OF 29  
**FP5**



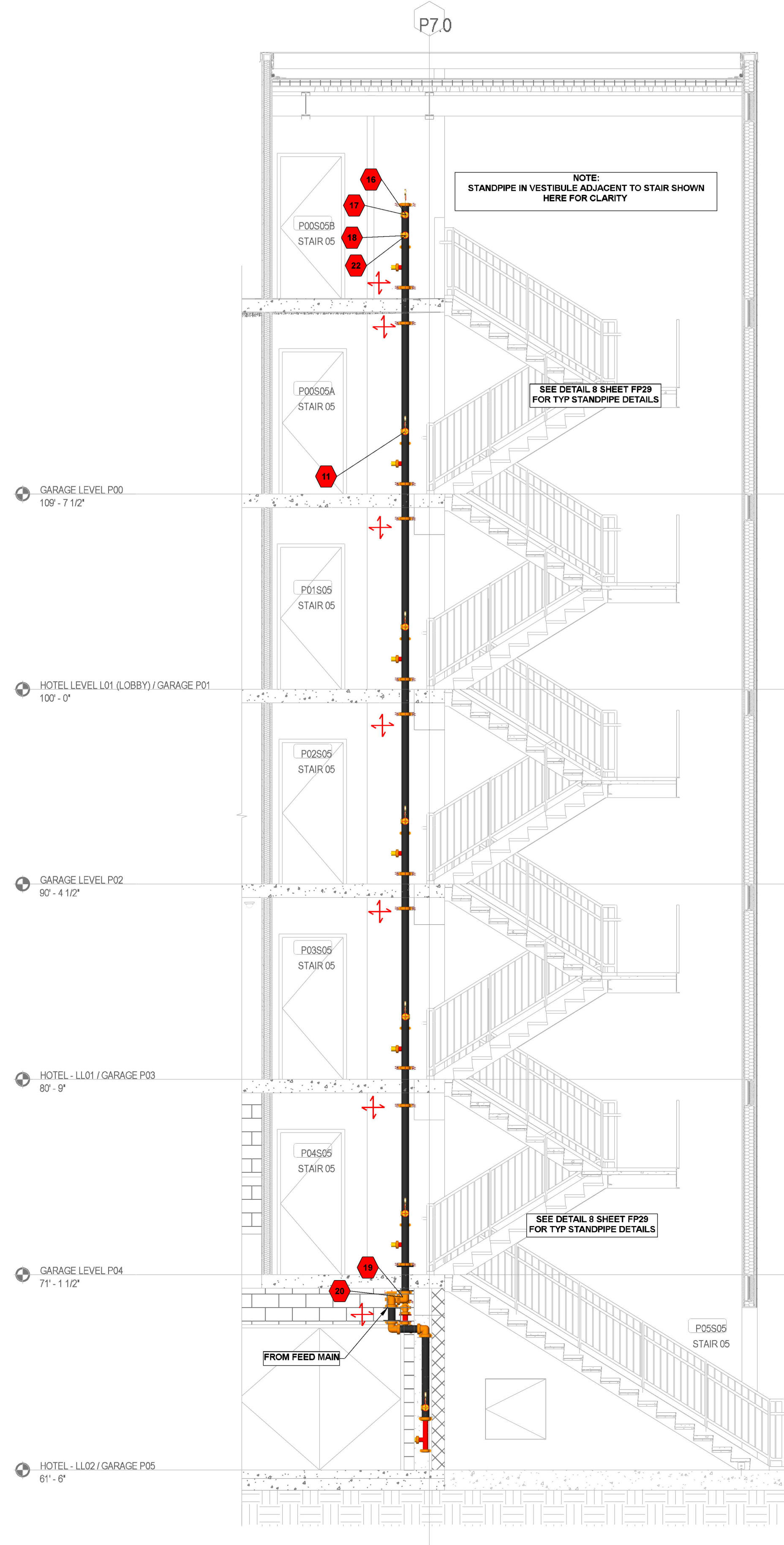
**5 STAIR 02 SECTION - EAST/WEST**  
SCALE: 1/8" = 1'-0"  
0 2 4 6 8 10 12  
SCALE: 1/8" = 1'-0"



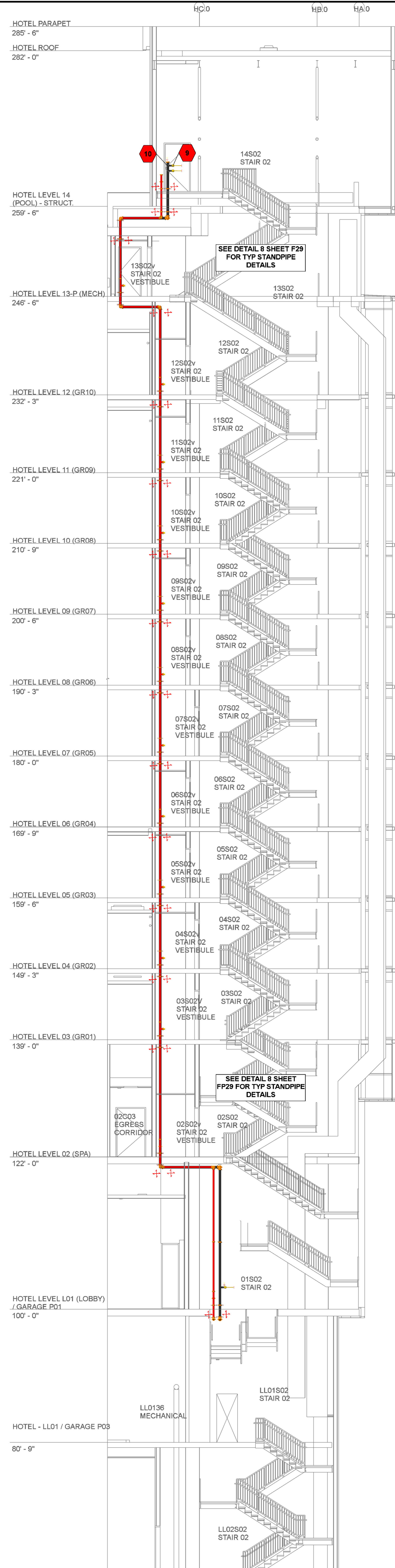
**8 TYP STANDPIPE DETAIL**  
SCALE: 1/2" = 1'-0"  
0 1/2 1 1 1/2 2 2 1/2 3  
SCALE: 1/2" = 1'-0"



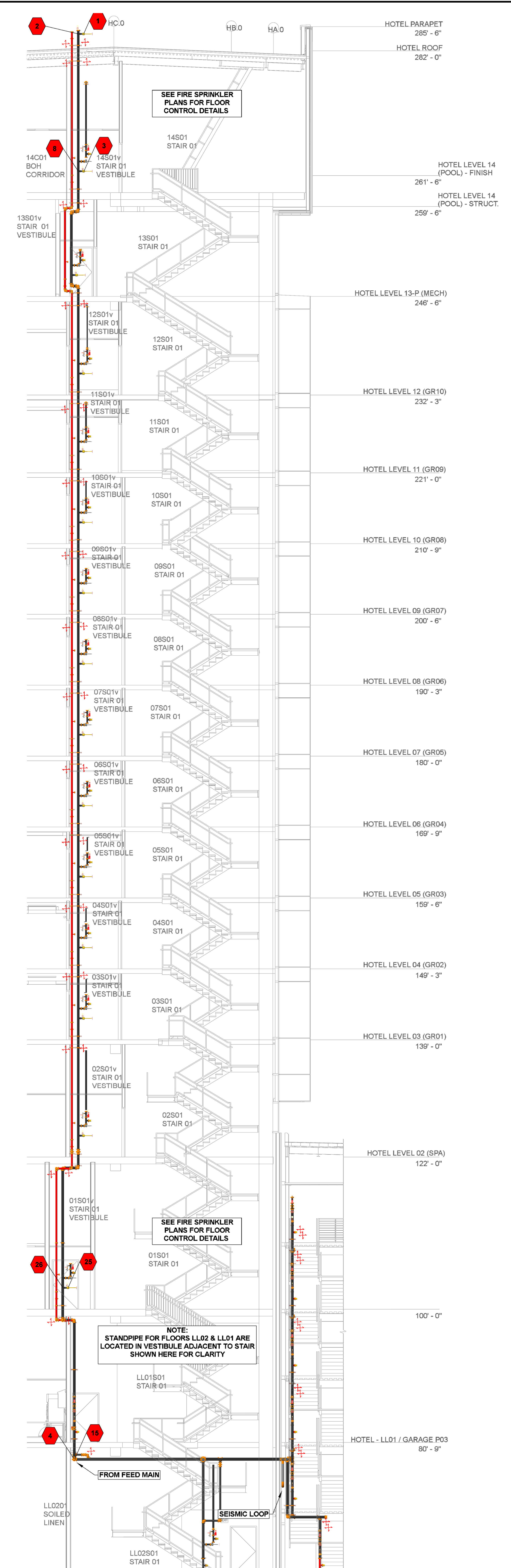
**7 STAIR 04 SECTION**  
SCALE: 1/4" = 1'-0"  
0 2 4 6 8 10 12  
SCALE: 1/4" = 1'-0"



**6 STAIR 05 SECTION**  
SCALE: 1/4" = 1'-0"  
0 2 4 6 8 10 12  
SCALE: 1/4" = 1'-0"



**4 STAIR 02 SECTION**  
SCALE: 1/8" = 1'-0"  
0 2 4 6 8 10 12  
SCALE: 1/8" = 1'-0"



**3 STAIR 01 SECTION**  
SCALE: 1/8" = 1'-0"  
0 2 4 6 8 10 12  
SCALE: 1/8" = 1'-0"

PROJECT:	JAMUL CASINO HOTEL
LOCATION:	14191 HIGHWAY 94 JAMUL, CA 91935
JOB NO.:	
SCALE:	PER PLAN
DRAWN BY:	JCG
DATE:	02/19/24
SHEET:	29 OF 32
TITLE:	STAIR SECTIONS
	<b>FP29</b>