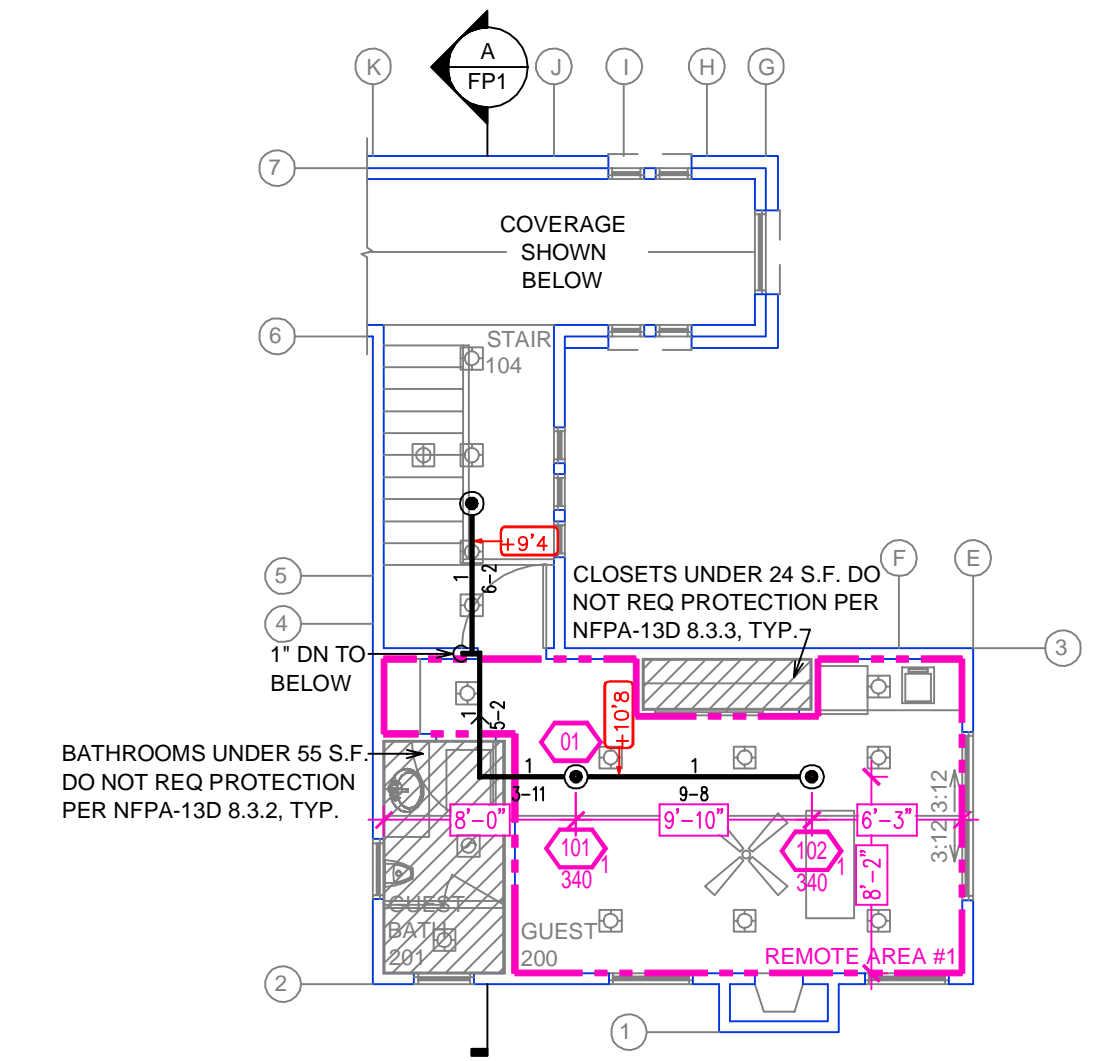
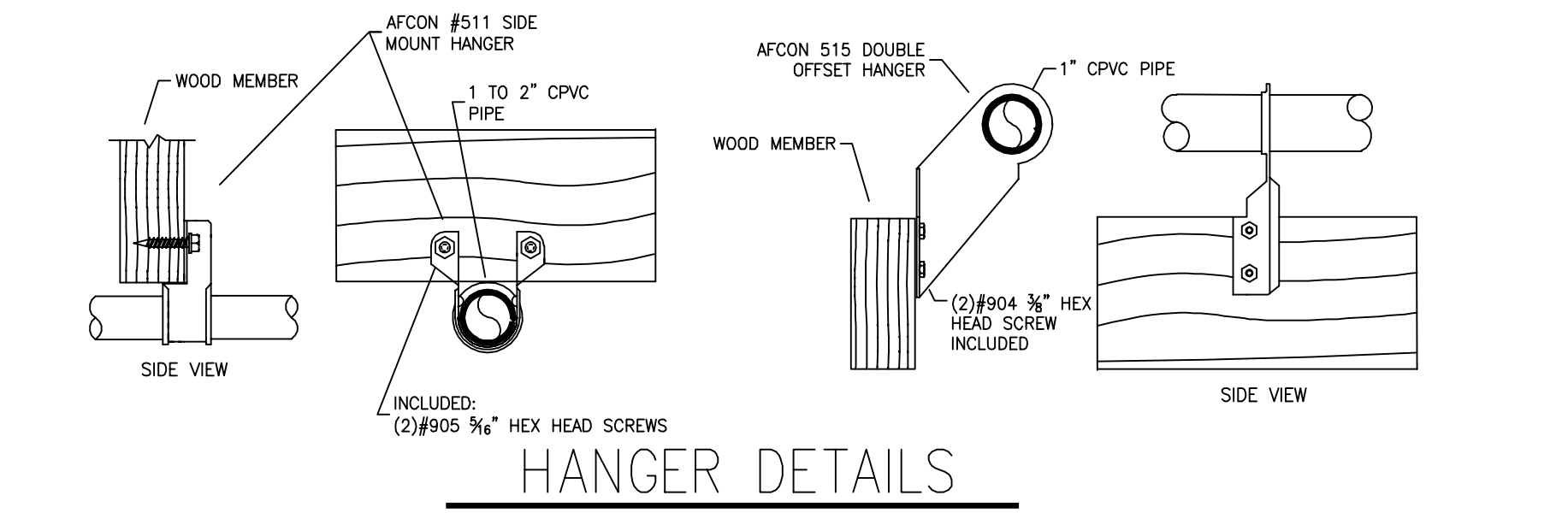
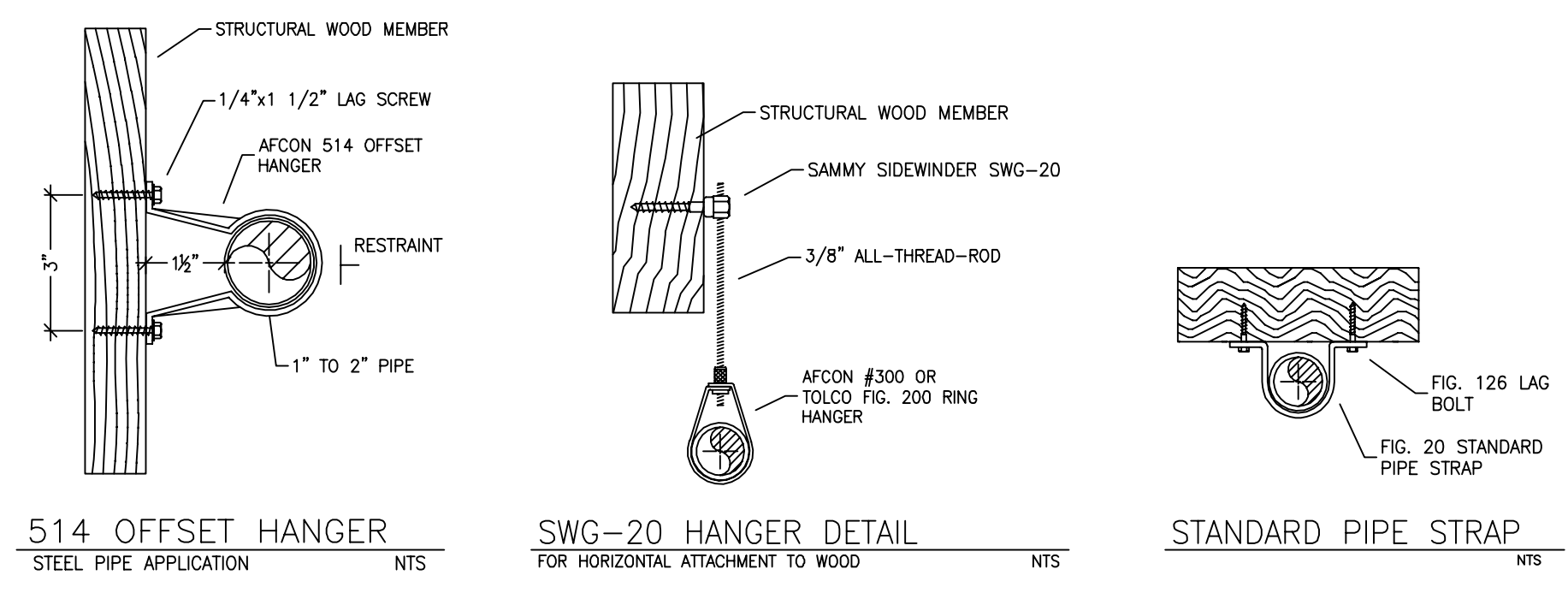


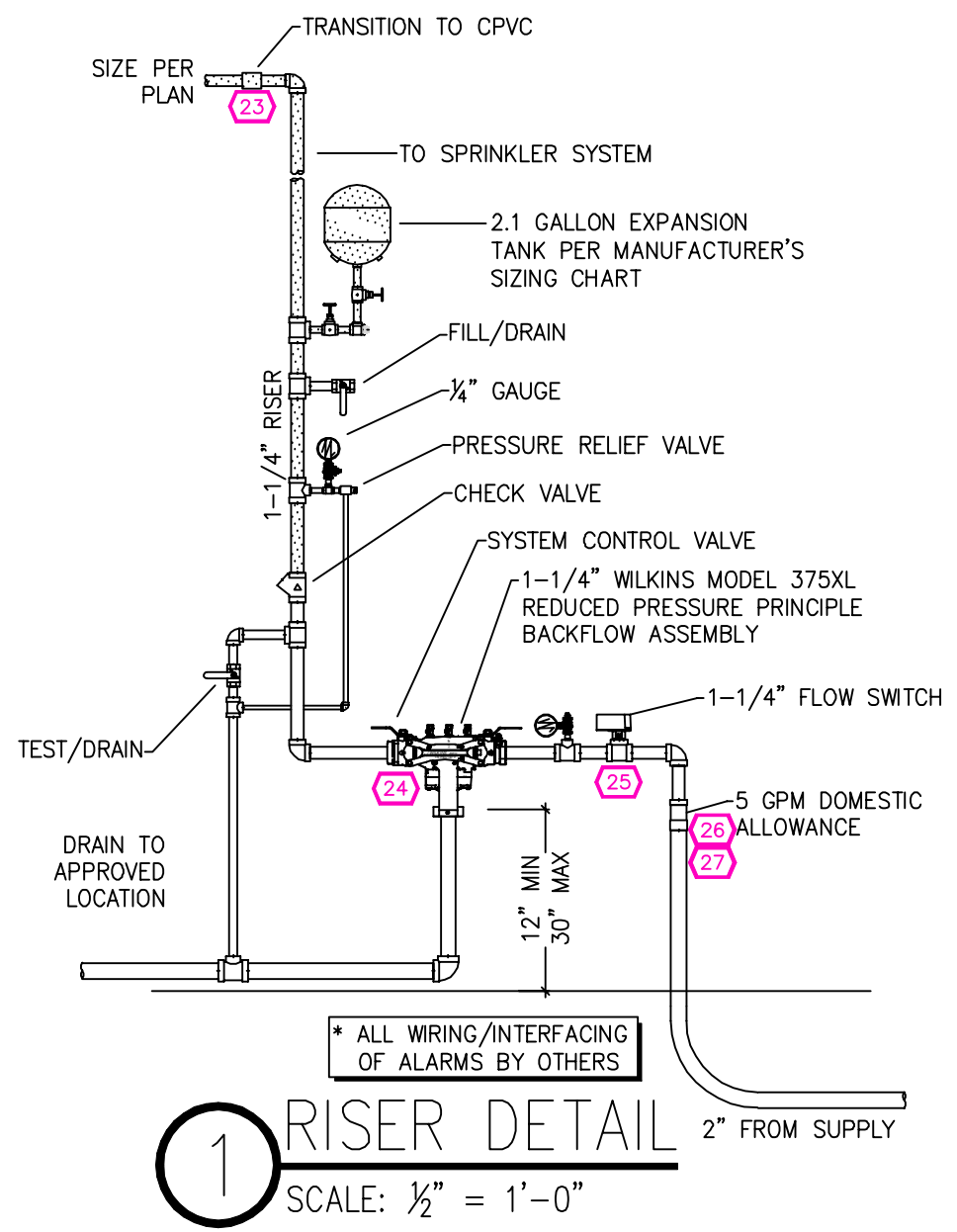
MAIN FLOOR FIRE SPRINKLER PLAN
SCALE: 1/8" = 1'-0"



UPPER FLOOR FIRE SPRINKLER PLAN
SCALE: 1/8" = 1'-0"



HANGER DETAILS



1 RISER DETAIL
SCALE: 1/2" = 1'-0"

REMOTE AREA 1	REMOTE AREA 2	REMOTE AREA 3
<p>Hydraulically Calculated System</p> <p>This system as shown on Fire Protection Plan company print no. FP1 dated 8/26/2024 for MURRELL RESIDENCE at GUEST 200 contract no. _____ is designed to discharge at a rate of 0.05 gpm (L/min) per sq ft (m²) of floor area over a maximum area of NFPA 13D - 2 SPRINKLERS sq ft (m²) when supplied with water at the rate of 33.2 gpm (L/min) at 65.1 psi (bars) at the base of the riser. Hose stream allowance of 5 gpm (L/min) is included in the above.</p> <p>Occupancy classification 130 LIGHT HAZARD Commodity classification N/A Maximum storage height N/A Safety factor 5.8</p>	<p>Hydraulically Calculated System</p> <p>This system as shown on Fire Protection Plan company print no. FP1 dated 8/26/2024 for MURRELL RESIDENCE at COURTNEY 112 contract no. _____ is designed to discharge at a rate of 0.05 gpm (L/min) per sq ft (m²) of floor area over a maximum area of NFPA 13D - 2 SPRINKLERS sq ft (m²) when supplied with water at the rate of 39.2 gpm (L/min) at 64.2 psi (bars) at the base of the riser. Hose stream allowance of 5 gpm (L/min) is included in the above.</p> <p>Occupancy classification 130 LIGHT HAZARD Commodity classification N/A Maximum storage height N/A Safety factor 6.8</p>	<p>Hydraulically Calculated System</p> <p>This system as shown on Fire Protection Plan company print no. FP1 dated 8/26/2024 for MURRELL RESIDENCE at LIVING contract no. _____ is designed to discharge at a rate of 0.05 gpm (L/min) per sq ft (m²) of floor area over a maximum area of NFPA 13D - 3 SPRINKLERS sq ft (m²) when supplied with water at the rate of 45.5 gpm (L/min) at 54.5 psi (bars) at the base of the riser. Hose stream allowance of 5 gpm (L/min) is included in the above.</p> <p>Occupancy classification 130 LIGHT HAZARD Commodity classification N/A Maximum storage height N/A Safety factor 11.0</p>

*WITH A CEILING SLOPE OVER 8:12, DESIGN CRITERIA DOES NOT MEET NFPA 13D 10.2. THREE HEADS CALCULATED PER AHJ

SPRINKLER SPACING

- A SINGLE PENDENT SPRINKLER MAY BE SPACED AT A MAXIMUM OF 18'x18' (324 SQ. FT.) OR UP TO 9' OFF A WALL (MINIMUM 8'-0" BETWEEN SPRINKLERS)
- TWO OR MORE HEADS IN A COMPARTMENT SHALL BE SPACED AT A MAXIMUM OF 18'x18' (324 SQ. FT.) OR UP TO 9' OFF A WALL (MINIMUM 8'-0" BETWEEN SPRINKLERS)
- SPRINKLERS SHALL BE MEASURED AT PERPENDICULAR ANGLES TO WALLS AND ALONG THE SLOPES OF CEILINGS.

THIS FIRE SPRINKLER SYSTEM UTILIZES THE NOBLE COMPANY FIREFIGHTER ELIMINATOR ANTI-FREEZE SOLUTION

SUBMITTAL

PIPE VOLUMES: (CPVC)

TOTAL PIPE FOOTAGE AND CAPACITY:
1" = 241' (11.92 GAL)
1-1/4" = 40' (3.17 GAL)

ADD 10% FOR DROPS AND PIPE SIZE DISCREPANCIES
TOTAL VOLUME: ±16.60 GALLONS

NFPA 13 - Table A.7.2.3 Capacity of 1 ft of pipe (Based on Actual Internal Pipe Diameter)

Nominal Pipe Diameter (in.)	Pipe Schedule 40 Schedule 10 (gal)	CPVC (gal)
1	0.045	0.049
1/4	0.078	0.085
1/2	0.106	0.115
2	0.174	0.190
2 1/2	0.248	0.263

NFPA 13 - Table 9.2.2.1(a) Maximum Distance Between Hangers (ft-in.)

Nominal Pipe Size (in.)	Nominal Pipe Size (in.)									
	3/4	1	1 1/4	1 1/2	2	2 1/2	3	4	6	8
Steel Pipe except threaded	N/A	12-0	12-0	15-0	15-0	15-0	15-0	15-0	15-0	15-0
Threaded lightwall steel pipe	N/A	12-0	12-0	15-0	15-0	15-0	15-0	N/A	N/A	N/A
Copper tube	8-0	8-0	10-0	10-0	12-0	12-0	15-0	15-0	15-0	15-0
CPVC	5-6	6-0	6-6	7-0	8-0	9-0	10-0	N/A	N/A	N/A

NO SPRINKLERS REQUIRED IN:
BATHROOMS 55 SQ. FT. OR LESS IN AREA PER NFPA 13D SECTION 8.6.2
CLOSETS 24 SQ. FT. OR LESS IN AREA PER NFPA 13D SECTION 8.6.3

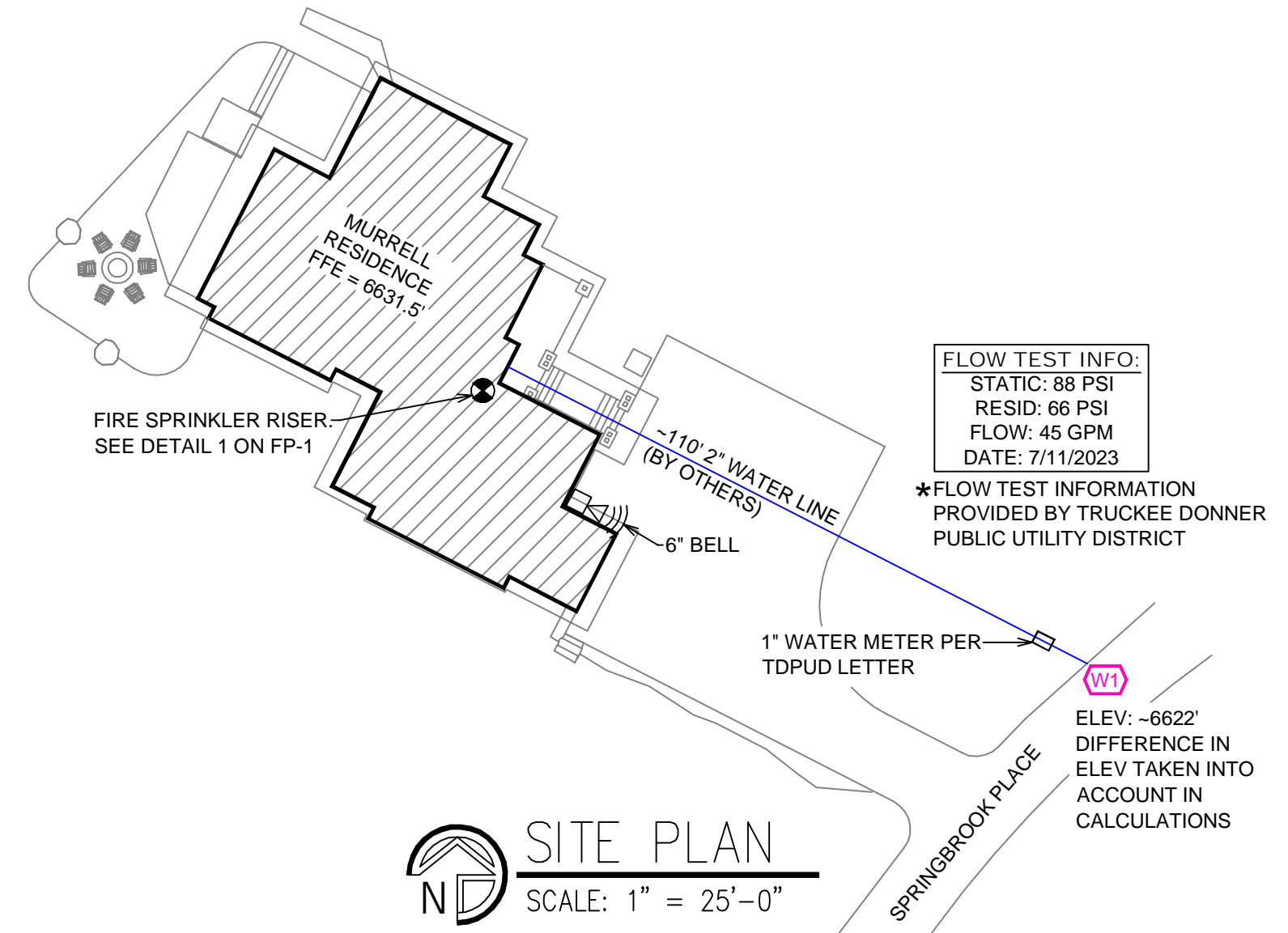
PROJECT SQUARE FOOTAGES
MAIN FLOOR = 2832 S.F.
UPPER FLOOR = 378 S.F.

SPRINKLER HEAT ZONES:

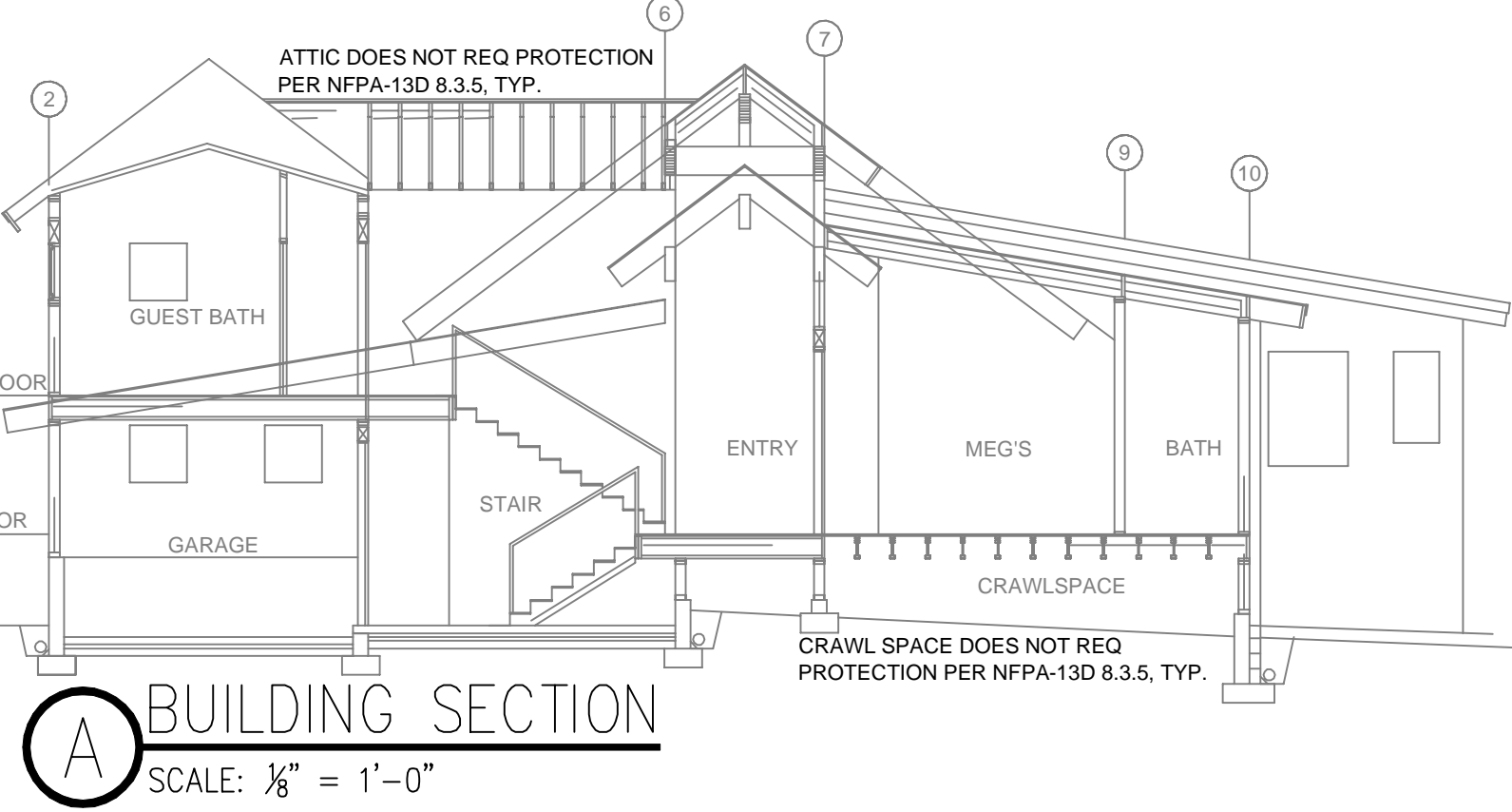
HEAT SOURCE:	ORDINARY TEMP. SPRINKLER	INTERMEDIATE TEMP. SPRINKLER
SIDE OF OPEN OR RECESSED FIRE PLACE	36"	12"
FRONT OF RECESSED FIRE PLACE	60"	36"
COAL OR WOOD BURNING STOVE	42"	12"
RANGE/OVEN, HOT AIR FLUES & UNINSULATED HEAT DUCT	18"	9"
UNINSULATED HOT WATER PIPES & 250-499 WATT LIGHTS	12"	6"
SIDE OF CEILING OR WALL MOUNTED HOT AIR DIFFUSERS	24"	12"
FRONT OF WALL MOUNTED HOT AIR DIFFUSERS	36"	18"
HOT WATER HEATER, FURNACE, LIGHT FIXTURE 0-250 WATT	6"	3"

PROJECT SUMMARY:

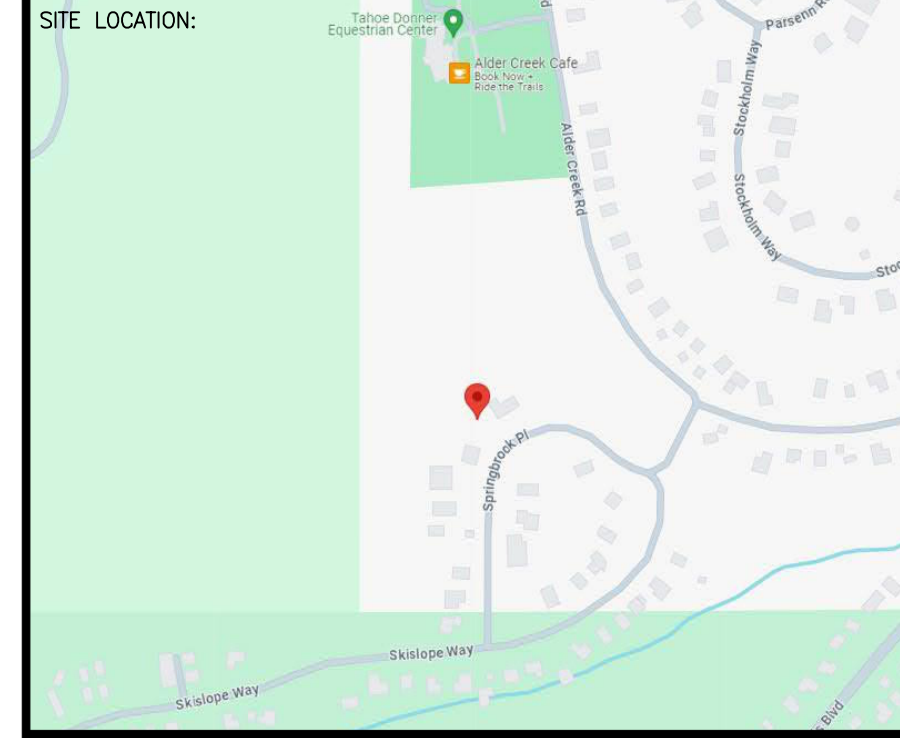
PROJECT NAME: **MURRELL RESIDENCE**
PROJECT ADDRESS: **12456 SPRINGBROOK PL, TRUCKEE CA**
APN: **046-290-020**
PROJECT TYPE: NEW T.I.
TYPE OF CONSTRUCTION: **V**
OCCUPANCY GROUP(S): **R3**
OCCUPIED LEVELS: **2**
TOTAL SPRINKLERED AREA: **3210** SQ. FT.
NFPA CODE REQUIREMENT: NFPA 13 NFPA 13R NFPA 13D
NUMBER OF SYSTEMS: **1**
SYSTEM TYPE(S): WET ANTI-FREEZE DRY PREACTION
TOTAL SPRINKLERS: **26**
SPECIAL NOTES: **SEE FIRE SPRINKLER NOTES THIS SHEET**



SITE PLAN
SCALE: 1" = 25'-0"



A BUILDING SECTION
SCALE: 1/8" = 1'-0"



PROJECT NAME: FIRE SPRINKLER PLANS FOR
MURRELL RESIDENCE
12456 SPRINGBROOK PLACE
TRUCKEE, CA 96161

STAMP:

DRAWING TITLE:
FIRE SPRINKLER PLAN

SCALE: 1/8" = 1'-0" JOB NO.:
DRAWN BY: DWG NO.:
BORN ON DATE: 8/26/2024
FILE: **FP-1**
SHEET 1 OF 1