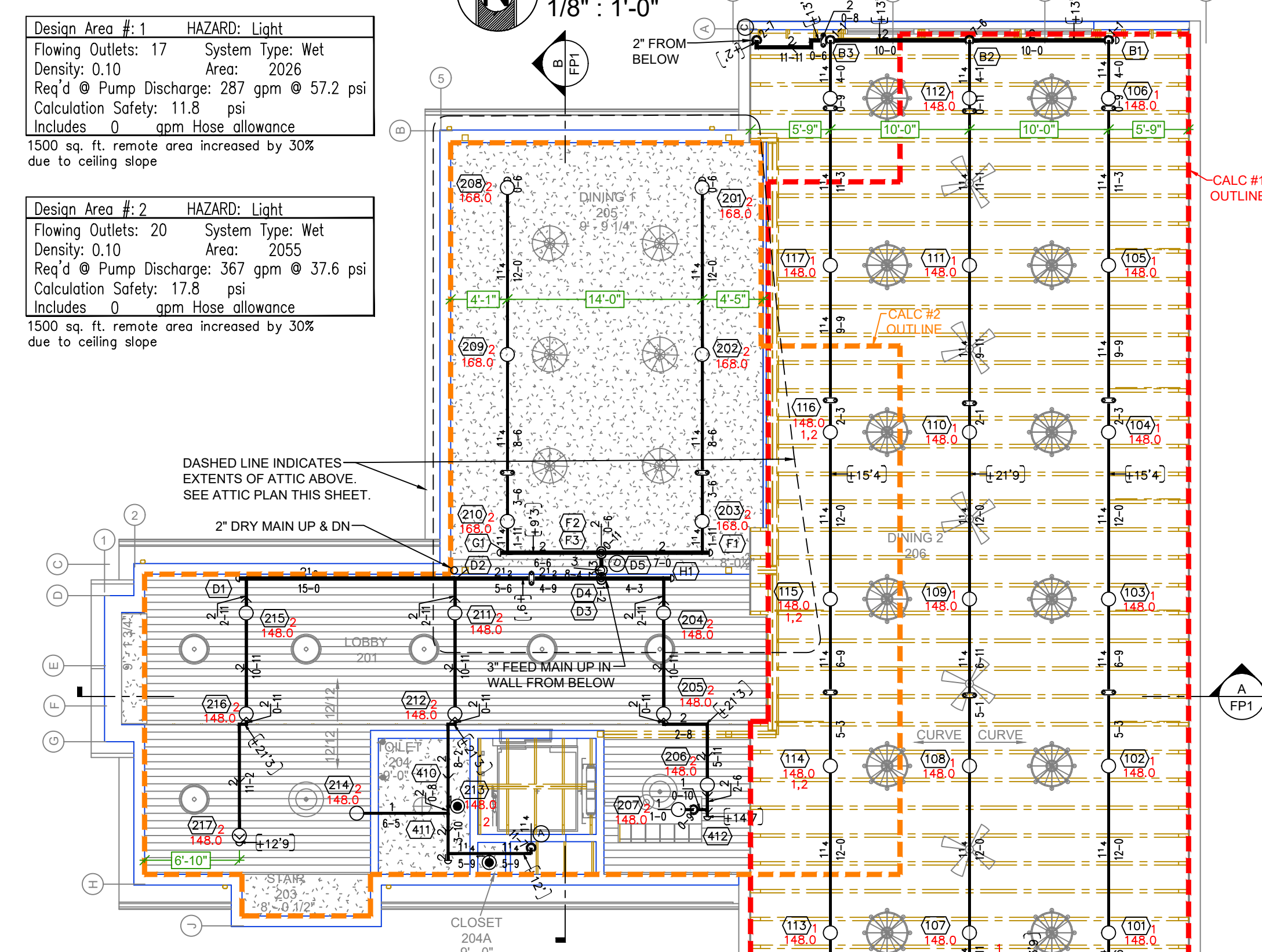
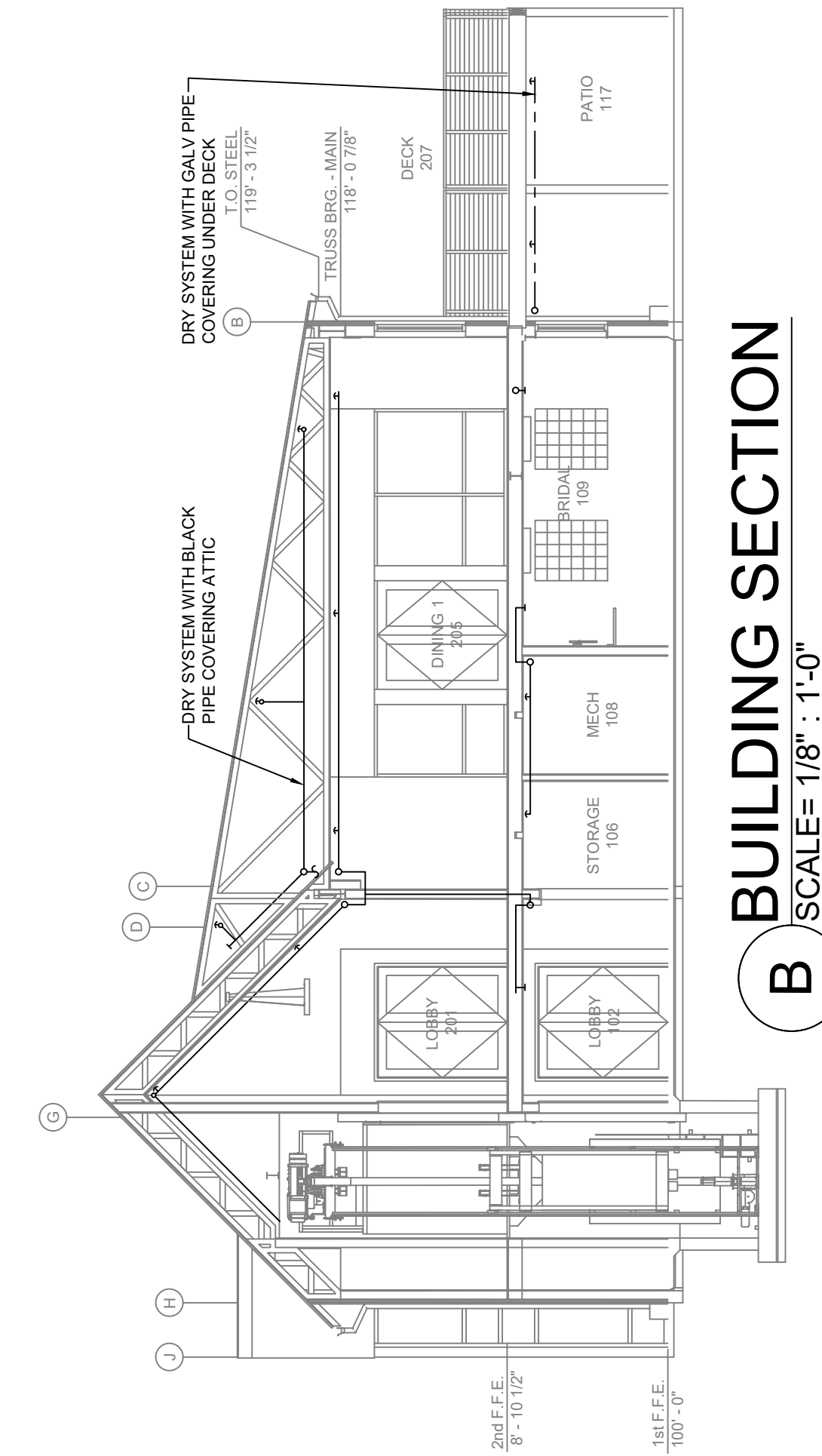


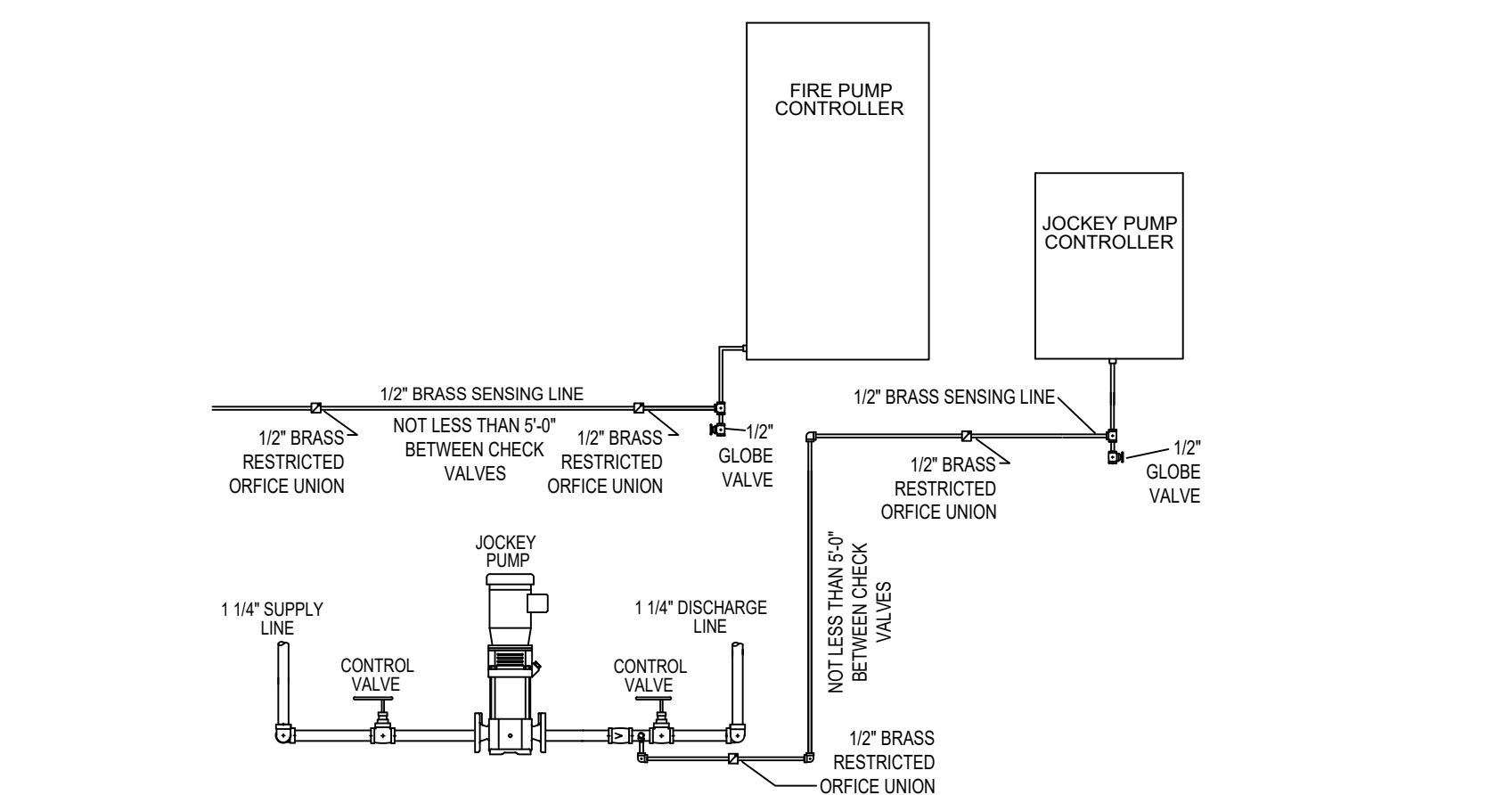
**A BUILDING SECTION**  
 SCALE= 1/8" : 1'-0"



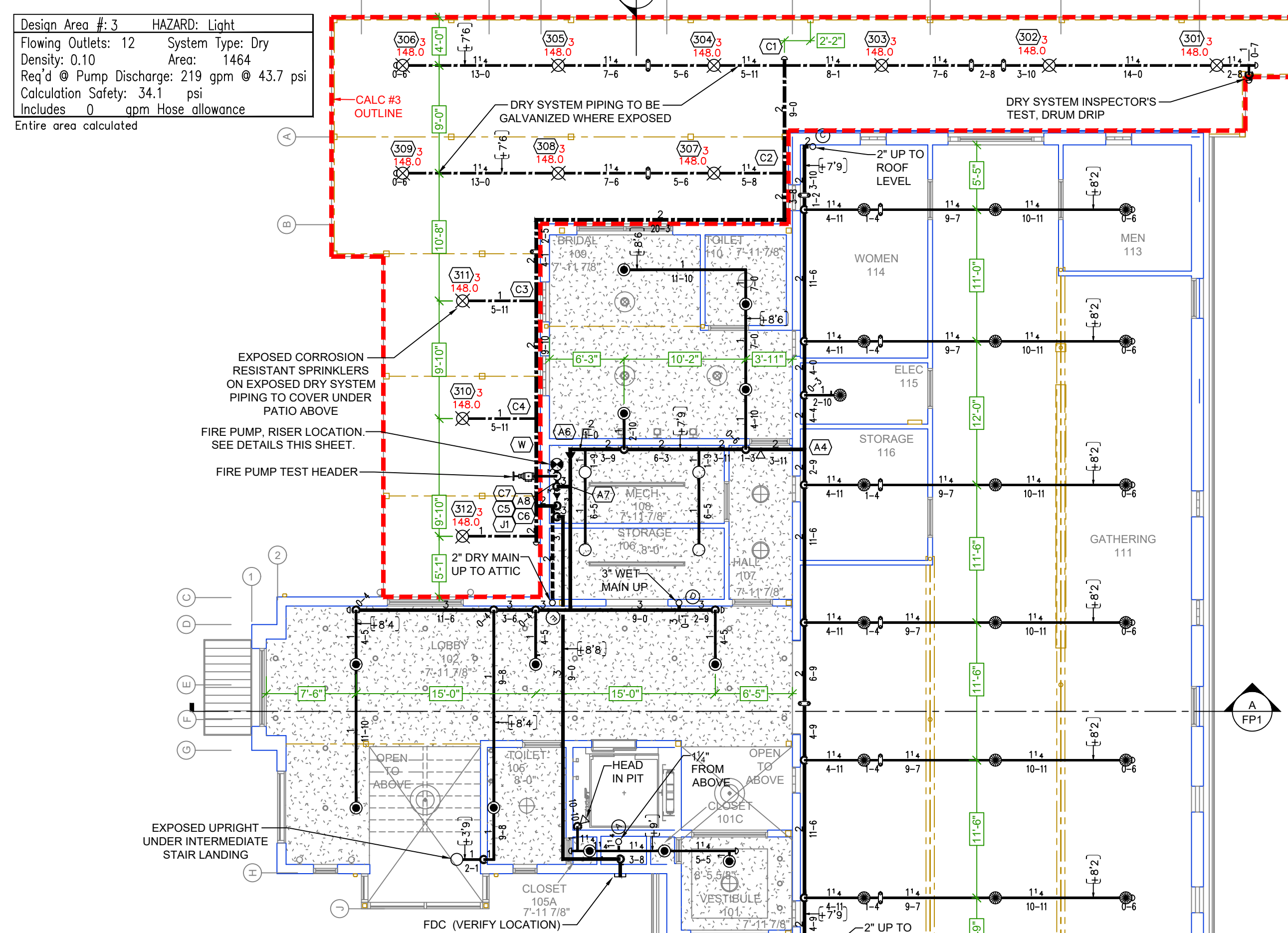
**SECOND FLOOR**  
 SCALE= 1/8" : 1'-0"



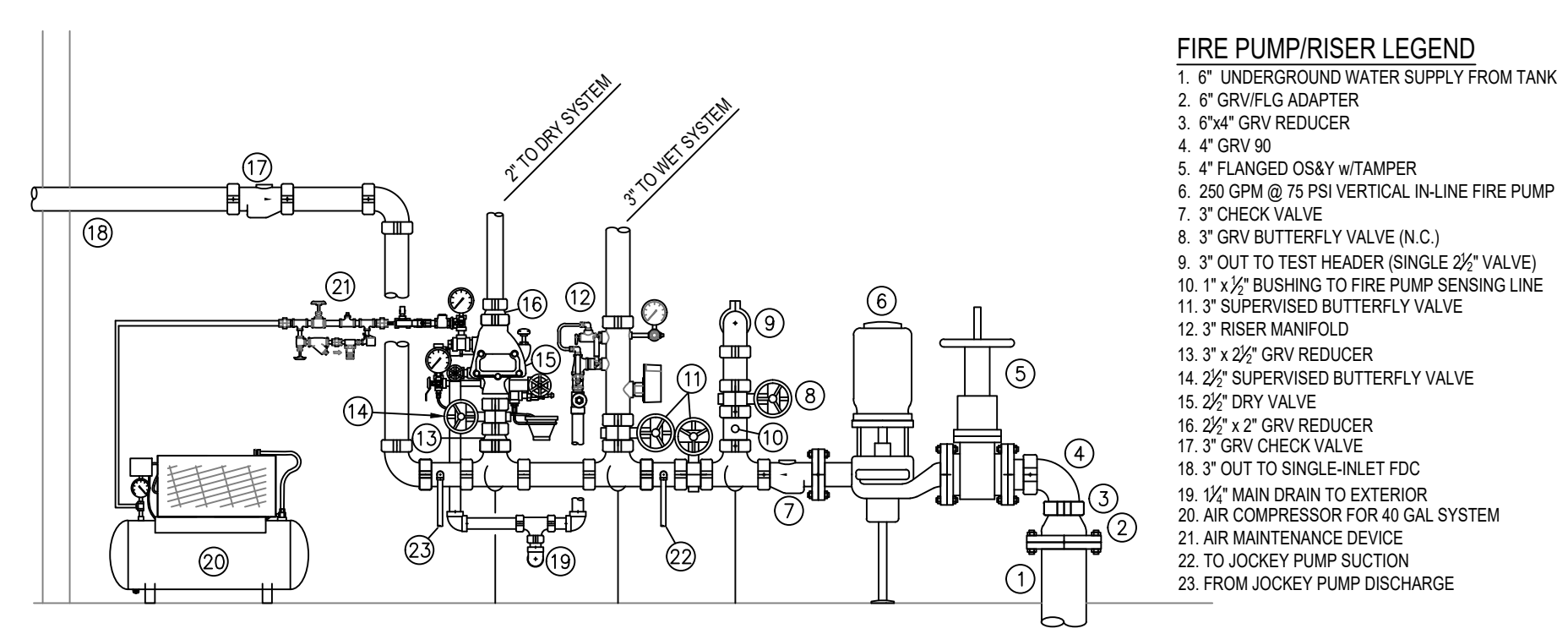
**B BUILDING SECTION**  
 SCALE= 1/8" : 1'-0"



**JOCKEY PUMP AND SENSING LINES DETAIL**  
 SCALE= 1/2" : 1'-0"

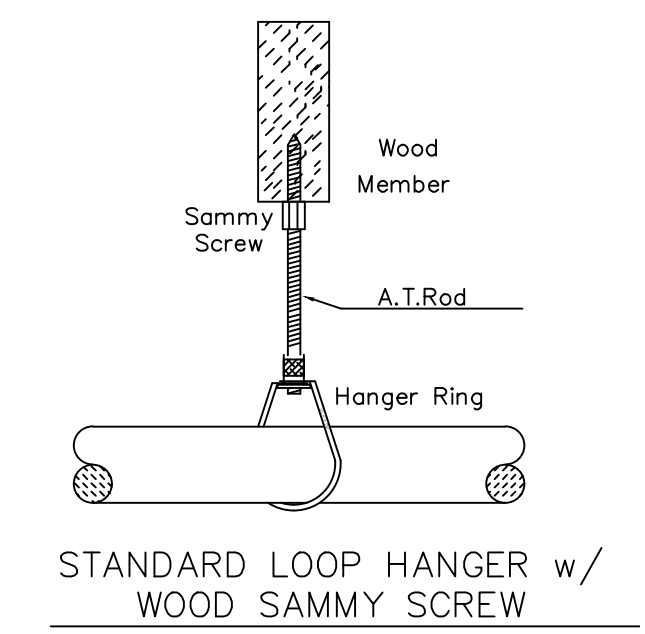


**FIRST FLOOR**  
 SCALE= 1/8" : 1'-0"



**FIRE PUMP / RISER DETAIL**  
 SCALE= 1/2" : 1'-0"

- FIRE PUMP/RISER LEGEND**
- 1" UNDERGROUND WATER SUPPLY FROM TANK
  - 2" GRV/G ADAPTER
  - 3" GRV REDUCER
  - 4" GRV
  - 4" FLANGED OS&Y w/TAMPER
  - 250 GPM @ 75 PSI VERTICAL IN-LINE FIRE PUMP
  - 3" CHECK VALVE
  - 3" GRV BUTTERFLY VALVE (N.C.)
  - 3" OUT TO TEST HEADER (SINGLE 25" VALVE)
  - 1" 1/2" SUPPLY TO FIRE PUMP SENSING LINE
  - 3" SUPERVISED BUTTERFLY VALVE
  - 3" RISER MANIFOLD
  - 3" x 25" GRV REDUCER
  - 25" SUPERVISED BUTTERFLY VALVE
  - 25" DRY VALVE
  - 25" x 2" GRV REDUCER
  - 3" GRV CHECK VALVE
  - 18" 3" OUT TO SINGLE-INLET FDC
  - 1/2" MAIN DRAIN TO EXTERIOR
  - 48" COMPRESSOR FOR 40 GAL SYSTEM
  - AIR MAINTENANCE DEVICE
  - TO JOCKEY PUMP SUCTION
  - FROM JOCKEY PUMP DISCHARGE

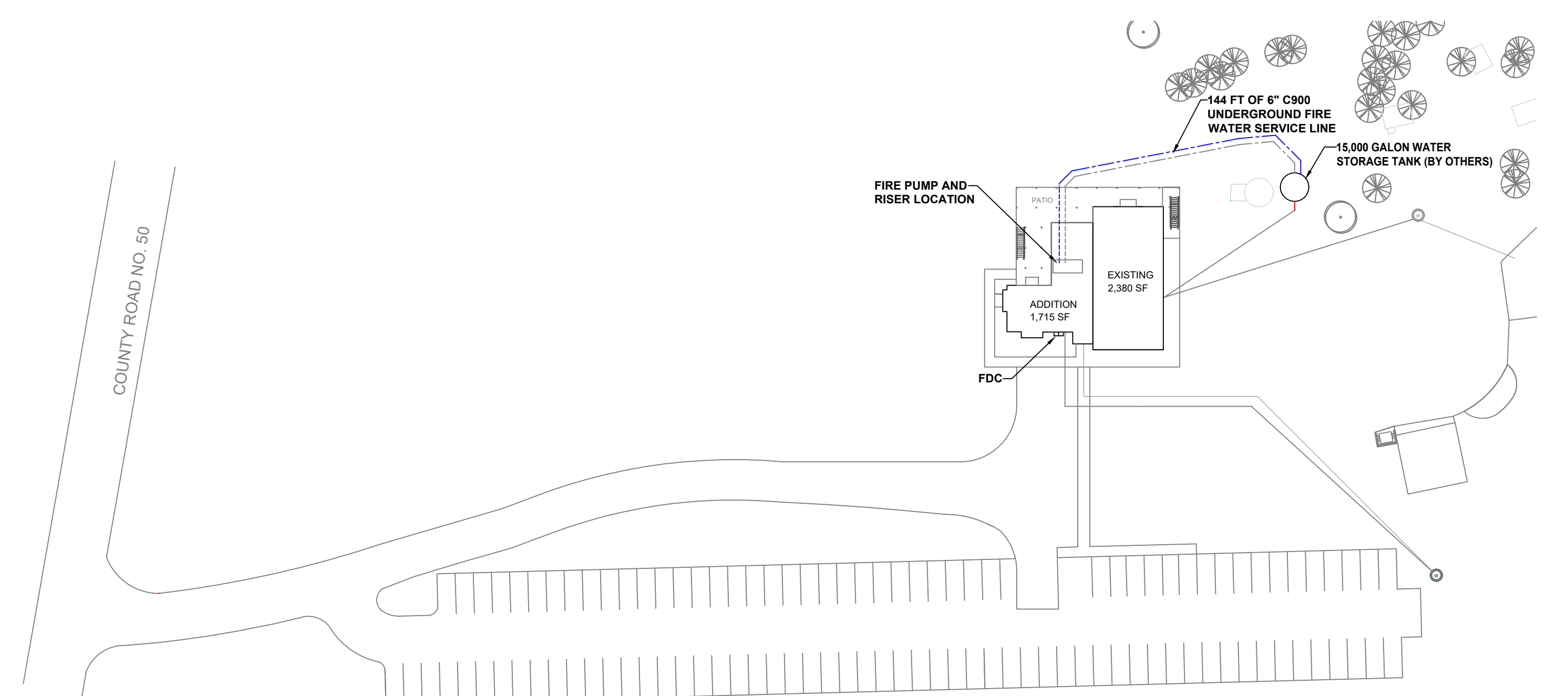


**STANDARD LOOP HANGER w/ WOOD SAMMY SCREW**

- PIPE LEGEND**
- GALVANIZED SCHEDULE 1040 DRY SYSTEM PIPING (EXTERIOR)
  - BLACK SCHEDULE 1040 DRY SYSTEM PIPING (INTERIOR)
  - BLACK MEGAFLOW / MEGATHREAD WET SYSTEM PIPING

**SPRINKLER HEAD LEGEND**

SYM	CNT	POSITION	FINISH	TEMP	K	NPT	SN	MFG.	MODEL#	ESCUTCHEON
13	PEND	WHITE	200	5.60	12"	V2708	Victaulic	FL-QR	SEM-RECESSED	
12	LUPR	WHITE	200	5.60	12"	V2704	Victaulic	FL-QR	NONE	
12	SIDE	BRASS	200	5.60	12"	TY3331	Victaulic	FL-QR	NONE	
19	PEND	BRASS	200	5.60	12"	V2708	Victaulic	FL-QR	NONE	
47	LUPR	BRASS	200	5.60	12"	V2704	Victaulic	FL-QR	NONE	
63 TOTAL HEADS										



**SITE PLAN**  
 SCALE: 1" = 50'-0"

**GENERAL NOTES**

1. SYSTEM INSTALLED PER NFPA-13 (2016 EDITION) AND STATE FIRE MARSHAL
2. ALL EQUIPMENT FOR THIS SYSTEM SHALL BE U.L. LISTED
3. MINIMUM PIPE SIZE SHALL BE 1" NOMINAL PIPE
4. ALL SCHED. 40 LIGHTWALL PIPING HAS WELDED OUTLETS & GROOVED SHORT RADIUS FITTINGS
5. ALL WELDING PER NFPA-51 (2017)
6. NO INSTALLATION OR FABRICATION TO BEGIN WITHOUT APPROVED SHOP DRAWINGS
7. ALL PIPE LOCATIONS ARE TO BE FIELD MEASURED PRIOR TO FABRICATION AND INSTALLATION BY SPRINKLER CONTRACTOR
8. ALL DIMENSIONS SHOWN ARE CENTER TO CENTER
9. HIGH TEMPERATURE HEADS ARE TO BE FIELD LOCATED WHERE REQUIRED
10. PROVIDE ONE SPARE HEAD CABINET WITH HEADS & 1 HEAD WRENCH
11. HANGERS ARE TO BE U.L. LISTED AND F.M. APPROVED
12. ELECTRICAL WIRING, ALARM DETECTION AND SUPERVISORY BY OWNER
13. OWNER'S RESPONSIBILITY TO PROVIDE ADEQUATE HEATING TO PREVENT WET SYSTEM PIPING FROM FREEZING.

NO.	REVISIONS	DATE	APPROVAL STAMPS

Drawing Title: **FIRE PROTECTION PLAN**

**WARD BARN**  
 29342 COUNTY RD 50  
 COLD SPRING, MN 56320

Drawing Date: 11/27/2023  
 Scale: 1/8" = 1'-0"  
 Drawn By: DS  
 Approval By: STATE FIRE MARSHAL DIV.  
 SHEET NO. **FP 1 OF 1**