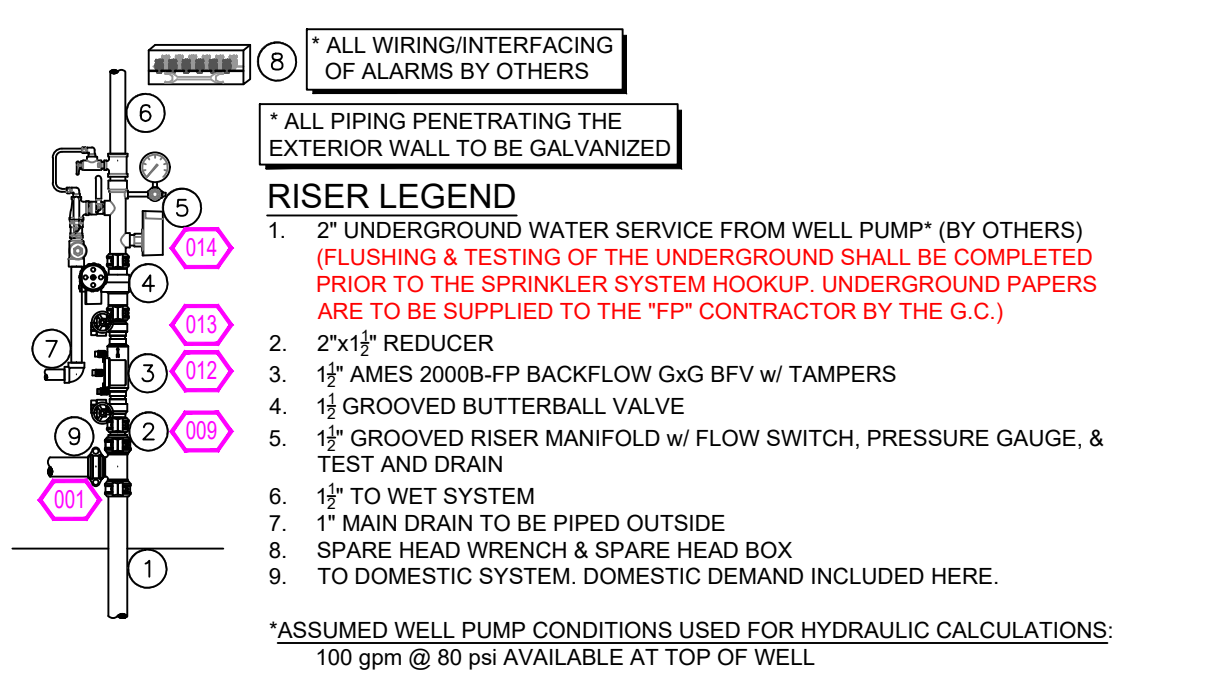
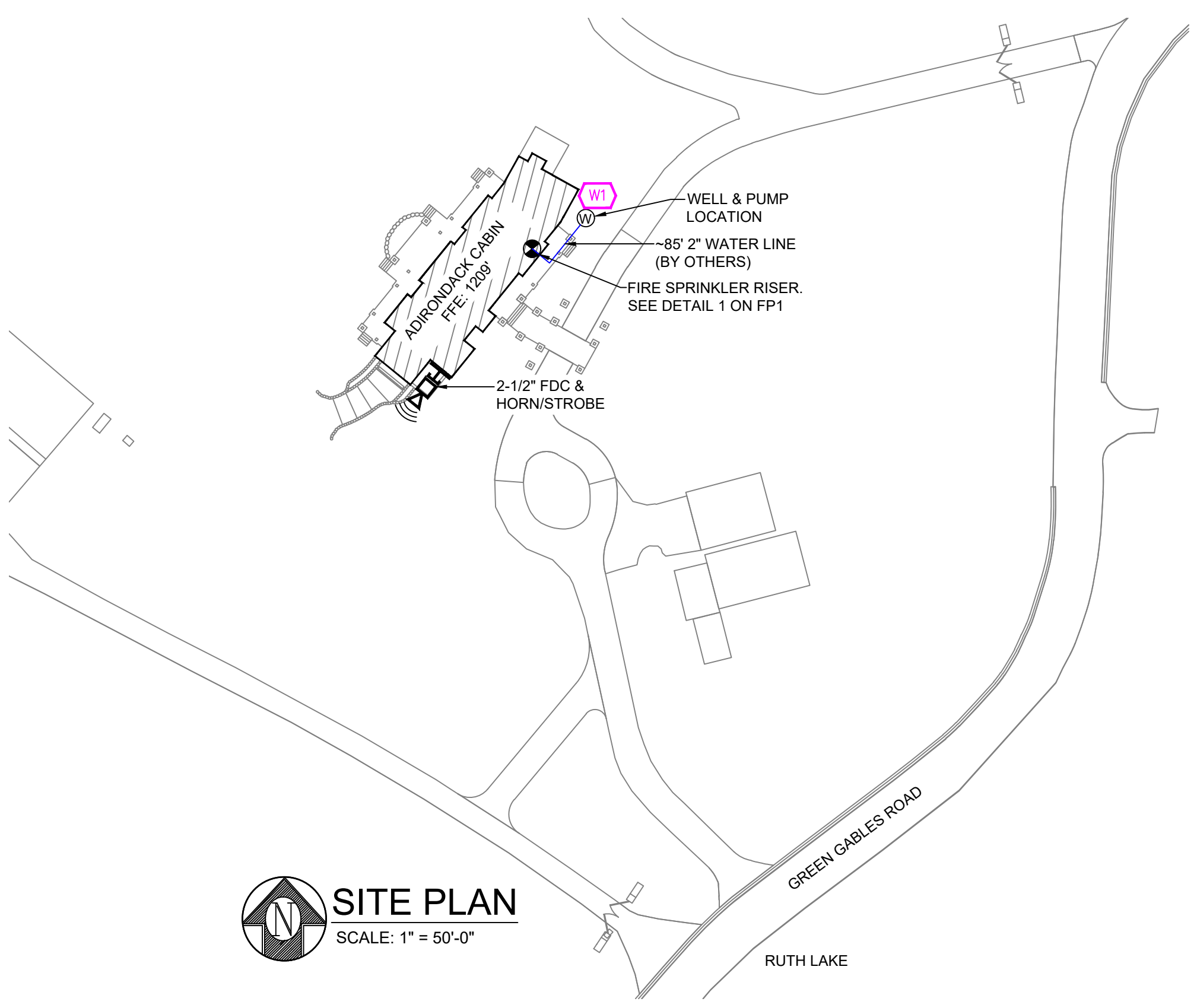


NFPA 13 STEEL PIPE HANGER SPACING (EXCEPT LIGHT WALL TYPE SPRINK)		NFPA 13 CPVC PIPE HANGER SPACING	
NOMINAL SIZE	MAX SPACING	NOMINAL SIZE	MAX SPACING
1"	12'-0"	3/4"	5'-0"
1-1/4"	12'-0"	1"	6'-0"
1-1/2"	15'-0"	1-1/4"	6'-0"
2"	15'-0"	1-1/2"	7'-0"
2-1/2"	15'-0"	2"	8'-0"
3"	15'-0"	2-1/2"	9'-0"
4" LARGER	15'-0"	3"	10'-0"

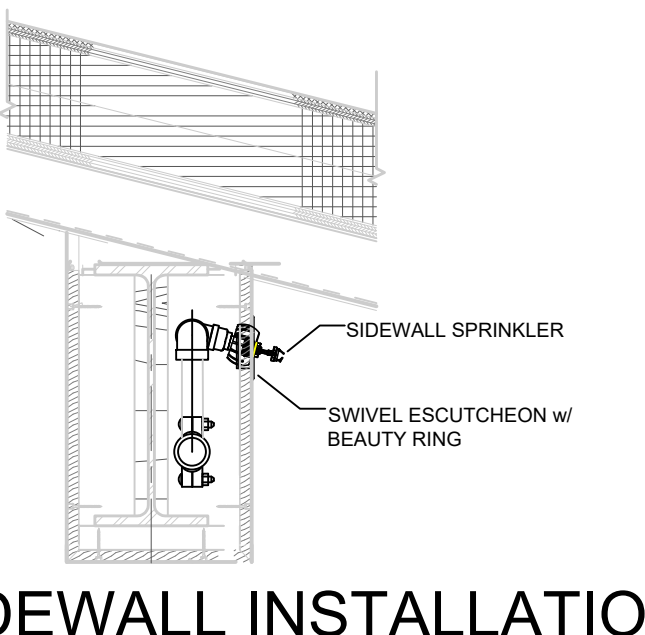


- GENERAL NOTES**
- MINNESOTA STATE BUILDING CODE (2020)
 - OCCUPANCY: R-2 (RESIDENTIAL)
 - TYPE OF CONSTRUCTION: TYPE V (WOOD FRAME)
 - SPRINKLERED AREAS (APPROXIMATE - SEE ARCHITECTURAL PLANS FOR ACTUAL)
 - LOWER LEVEL = 2530 S.F.
 - MAIN LEVEL = 2610 S.F.
 - UPPER LEVEL = 2009 S.F.
 - TOTAL = 7149 S.F.
 - INSTALLATION STANDARDS: SPRINKLER SYSTEM DESIGNED AND INSTALLED PER NFPA-13D (2016), WITH ENHANCEMENTS TO DOUBLE THE AVAILABLE FLOW FROM TWO TO FOUR SPRINKLERS.
 - SPRINKLER PIPE TYPES:
 - WET: 2.1" RISER PIPE TO BE BLACK STEEL SCHEDULE 40. ALL OTHER PIPE TO BE CPVC WITH CEMENTED FITTINGS.
 - DESIGN CRITERIA
 - SYSTEM IS DESIGNED TO NFPA 13D WITH REQUIRED GPM PER SPRINKLER DETERMINED BY SPRINKLER HEAD LISTING DATA. NUMBER OF FLOWING SPRINKLERS IN HYDRAULIC CALCULATIONS HAS BEEN INCREASED FROM TWO TO A MAXIMUM OF FOUR PER INSURANCE COMPANY REQUIREMENTS. PIPING IS SIZED ACCORDINGLY BY HYDRAULIC CALCULATIONS. REFER TO SPRINKLER HEAD DATA SHEETS FOR DISCHARGE CRITERIA.
 - SPRINKLER PROTECTION IS PROVIDED FOR LIVING AREAS AND THE FOLLOWING AREAS PER 13D:
 - CLOSETS OVER 24 S.F.
 - BATHROOMS OVER 55 S.F.
 - SPRINKLER PROTECTION IS NOT PROVIDED FOR THE FOLLOWING AREAS:
 - CLOSETS UNDER 24 S.F.
 - BATHROOMS UNDER 55 S.F.
 - ATTIC AND CRAWL SPACE
 - SCREEN PORCH, PORTE COCHERE, AND DECKS
- NOTES:**
- ALL MATERIAL TO BE NEW AND MEET U.L. STANDARDS
 - HANGERS TO BE INSTALLED IN ACCORDANCE WITH NFPA 13 (2016) - SEE PLAN FOR HANGING REQUIREMENTS
 - SYMBOLS USED ON DRAWINGS:
 - (ELEVATION) PIPE ELEVATION A.F.F.
 - (H) ROOM HAZARD CLASSIFICATION (ALL ROOMS ARE CONSIDERED LIGHT HAZARD UNLESS NOTED)
 - (J) HYDRAULIC CALCULATION JUNCTION POINT
 - 8'-0" CEILING HEIGHT
 - SCOPE OF WORK:
 - TO INSTALL A NEW ENHANCED 13D SPRINKLER SYSTEM FOR THE RESIDENCE SHOWN ON THIS PLAN. THE SYSTEM SHALL HAVE 1 WET ZONE FEEDING ALL THREE LEVELS.



SPRINKLER HEAD LEGEND

SYM	CNT	POSITION	FINISH	TEMP	K	NPT	SN	MFG.	MODEL#	ESCUTCHEON
4	4	PENDENT	WHITE	200	4.80	1/2"	VK494	VIKING	FREEDOM	CONCEALED
23	23	PENDENT	WHITE	155	4.80	1/2"	VK494	VIKING	FREEDOM	CONCEALED
25	25	SIDEWALL	WHITE	155	4.80	1/2"	VK496	VIKING	FREEDOM	G-1 (SEE DETAIL)
3	3	PENDENT	WHITE	155	4.98	1"	TY2236	TYCO	LFI	SEMI-RECESS
55 TOTAL HEADS										



	GENERAL NOTES	NO	REVISIONS	DATE	APPROVAL STAMPS	Drawing Title: FIRE PROTECTION PLAN ADIRONDACK CABIN 974 GREEN GABLES ROAD EAST GULL LAKE, MN 56401	Contract No.: C24-64 Drawing Date: 8/19/2024 Scale: 1/8" = 1'-0" Drawn By: DVG Approval By: STATE FIRE MARSHAL DIV. SHEET NO.: FP 1 of 1
	1. SYSTEM INSTALLED PER NFPA-13D (2016 EDITION) AND STATE FIRE MARSHAL 2. ALL EQUIPMENT FOR THIS SYSTEM SHALL BE U.L. LISTED 3. MINIMUM PIPE SIZE SHALL BE 1" NOMINAL PIPE 4. ALL SCH-10 & LIGHTWALL PIPING HAS WELDED OUTLETS & GROOVED SHORT RADIUS FITTINGS 5. ALL WELDING PER NFPA-13 (24.2) 6. NO INSTALLATION OR FABRICATION TO BEGIN WITHOUT APPROVED SHOP DRAWINGS 7. ALL PIPE LOCATIONS ARE TO BE FIELD MEASURED PRIOR TO FABRICATION AND INSTALLATION BY SPRINKLER CONTRACTOR 8. ALL DIMENSIONS SHOWN ARE CENTER TO CENTER 9. HIGH TEMPERATURE HEADS ARE TO BE FIELD LOCATED WHERE REQUIRED 10. PROVIDE ON SPARE HEAD CABINET WITH HEADS & 1 HEAD WRENCH 11. HANGERS ARE TO BE U.L. LISTED AND I.M. APPROVED 12. ELECTRICAL WIRING, ALARM, DETECTION AND SUPERVISORY BY OWNER 13. OWNER'S RESPONSIBILITY TO PROVIDE ADEQUATE HEATING TO PREVENT WET SYSTEM PIPING FROM FREEZING.						