

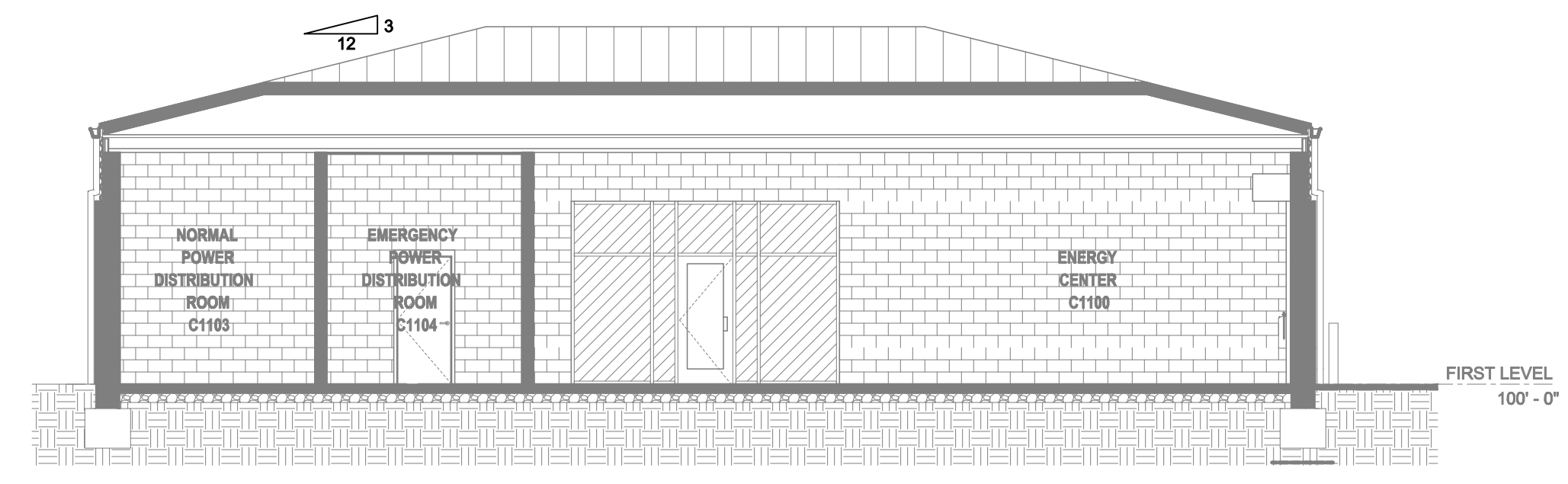
**ENERGY CENTER FIRE SPRINKLER PLAN**  
SCALE: 1/8" = 1'-0"

**CALC PLACARD**

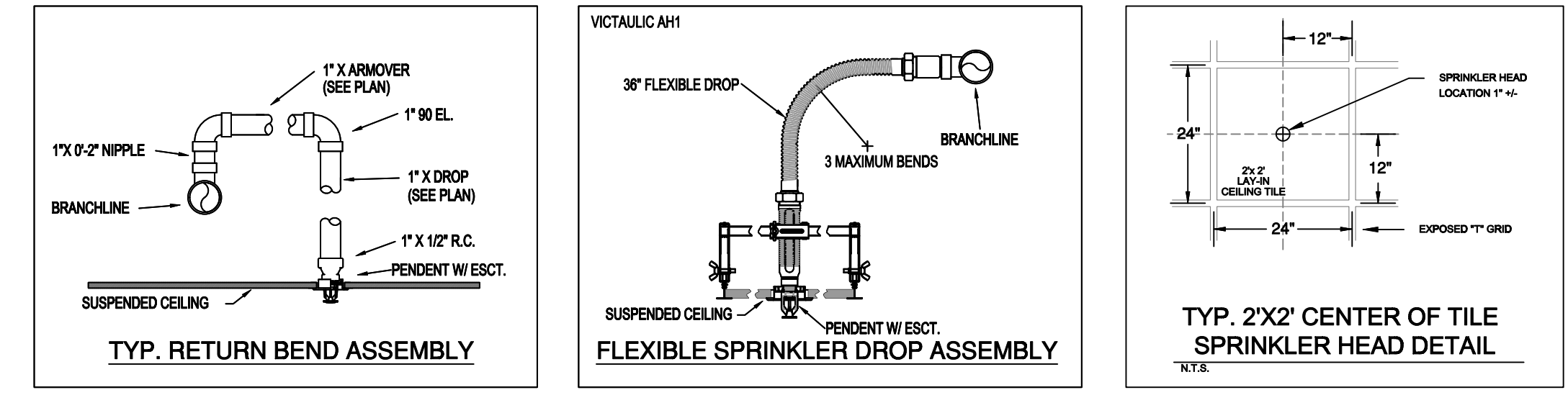
Design Area #: 01 HAZARD: OH1  
Zone: 1 System Type: WET  
Location: ENERGY CENTER

Flowing Outlets: 14  
Density: 0.15 Remote Area: 1476  
Req'd @ Base of Riser  
Flow 297.2 gpm @ 36.6 psi  
Available @ Pump Discharge  
Flow 547.2 gpm @ 92 psi  
Calculation Safety: 45 psi  
Includes 250 gpm Hose allowance

**NOTE: 1500 S.F. REDUCED BY 27% TO 1095 S.F. DUE TO CEILING HEIGHT OF 18'-10" PER NFPA 13 FIG. 11.2.3.2.3.1 THEN INCREASED BY 30% TO 1424 S.F. DUE TO SLOPED CEILINGS PER SEC 11.2.3.2.4**



**A BUILDING SECTION**  
SCALE: 1/8" = 1'-0"



**INSTALLATION DETAILS**

SYM	QTY	POSITION	FINISH	TEMP	K	NFP	SN	MP/L	MODEL#	ESCUTCHEON	MAX SPACING
181	PENDING	WHITE	200	5.60	1/2"		TY3531	TYCO	SPH	CONCEALED	225 S.F. LH / 130 S.F. OH1
112	UPRIGHT	BRASS	200	5.60	1/2"		TY313	TYCO	TY-FRB	N/A	130 S.F.
102	UPRIGHT	BRASS	200	5.60	1/2"		TY313	TYCO	TY-FRB	N/A	130 S.F.
20	PENDING	WHITE	200	8.00	3/4"		VK464	Viking	MIRAGE	CONCEALED	225 S.F.
8	PENDING	BRASS	200	5.60	1/2"		TY323	TYCO	TY-FRB	N/A	225 S.F.

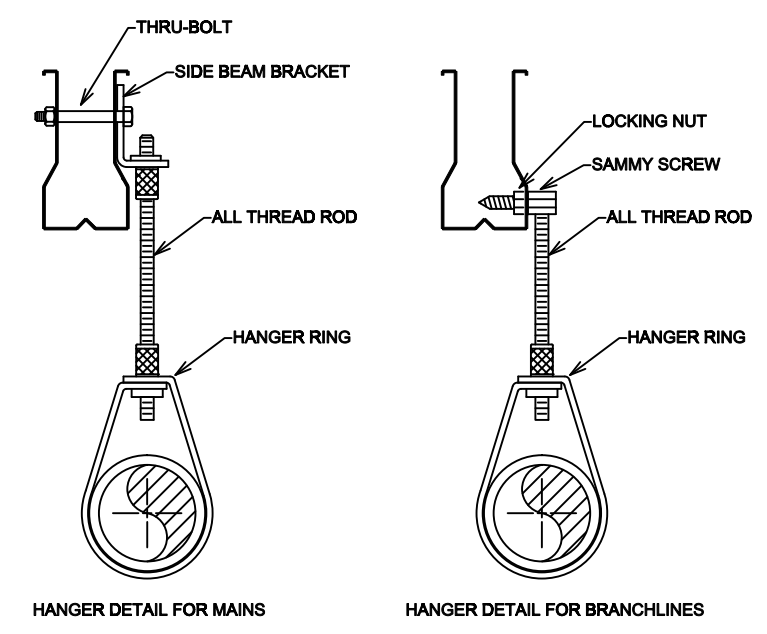
433 TOTAL HEADS

**SPRINKLER HEAD LEGEND**

- GENERAL NOTES**
- INDIANA BUILDING CODE (2014)
    - OCCUPANCY: TYPE B: PRIMARY CARE & ORTHO, TYPE F-1: ENERGY CENTER
    - TYPE OF CONSTRUCTION 3-4
    - SPRINKLERED AREAS (APPROXIMATE - SEE ARCHITECTURAL PLANS FOR ACTUAL)
      - ENERGY CENTER = 2,581 S.F.
      - PRIMARY CARE & ORTHO:
        - 1ST FLOOR = 19,892 S.F.
        - MECH PENTHOUSE = 892 S.F.
    - INSTALLATION STANDARDS:
      - SPRINKLER SYSTEM DESIGNED AND INSTALLED PER NFPA-13 (2010)
  - SPRINKLER PIPE TYPES:
    - WET:
    - 1" BRANCH LINES TO BE BLK SCHEDULE 40 PIPING WITH THREADED FITTINGS
    - 1 1/2" THROUGH 8" MAINS & BRANCH LINES TO BE BLK LIGHTWALL PIPING WITH GROOVED FITTINGS
    - MAINS & BRANCH LINES TO BE ROLL-GROOVED BLK LIGHTWALL PIPING
  - DESIGN CRITERIA
    - CORRIDORS, EXAM ROOMS, OFFICES, BATHROOMS, AND SIMILAR AREAS HAVE BEEN DESIGNED TO LIGHT HAZARD
    - ENERGY CENTER, MECHANICAL, ELECTRICAL, AND STORAGE ROOMS HAVE BEEN DESIGNED TO ORDINARY HAZARD GROUP 1
    - REMOTE AREA REDUCTIONS HAVE BEEN TAKEN WHERE APPLICABLE PER NFPA 13 SEC. 11.2.3.2.3
  - NOTES:
    - ALL MATERIAL TO BE NEW AND MEET U.L. STANDARDS
    - HANGERS TO BE INSTALLED IN ACCORDANCE WITH NFPA 13 (2010) - SEE PLAN FOR HANGING REQ
  - SYMBOLS USED ON DRAWINGS:
    - 100 PIPE ELEVATION A.F.F
    - 112 PIPE ELEVATION BELOW B.O.D
    - OH1 ROOM HAZARD CLASSIFICATION (ALL ROOMS ARE CONSIDERED LIGHT HAZARD UNLESS NOTED)
    - HYDRAULIC CALCULATION JUNCTION POINT
    - 8'-4" CEILING HEIGHT
  - SCOPE OF WORK:
    - ON THE HENRY COMMUNITY HEALTH CAMPUS WILL PROVIDE SPRINKLER PROTECTION FOR TWO NEW BUILDINGS
    - THE ENERGY CENTER WILL BE PROTECTED WITH A WET SPRINKLER SYSTEM.
    - THE PRIMARY CARE & ORTHO BUILDING WILL BE PROTECTED WITH A WET SPRINKLER SYSTEM.
    - THE BACKFLOW PREVENTER FOR THE SITE WILL BE LOCATED IN THE ENERGY CENTER. THE UNDERGROUND ROUTES INTO THE ENERGY CENTER BUILDING THEN AFTER THE BACKFLOW ROUTES BACK OUT TO FEED THE PRIMARY CARE & ORTHO BUILDING AND ALL FUTURE BUILDINGS. THE FDC FOR THE SITE WILL ALSO BE LOCATED AT THE ENERGY CENTER, FREE-STANDING, JUST NORTH OF THE BUILDING.
    - ALL AREAS OF THE BUILDINGS TO BE INSTALLED AND COVERED IN ACCORDANCE WITH THE LOCAL AUTHORITY HAVING JURISDICTION AND PER NFPA 13 (2010)

**PIPE LEGEND**

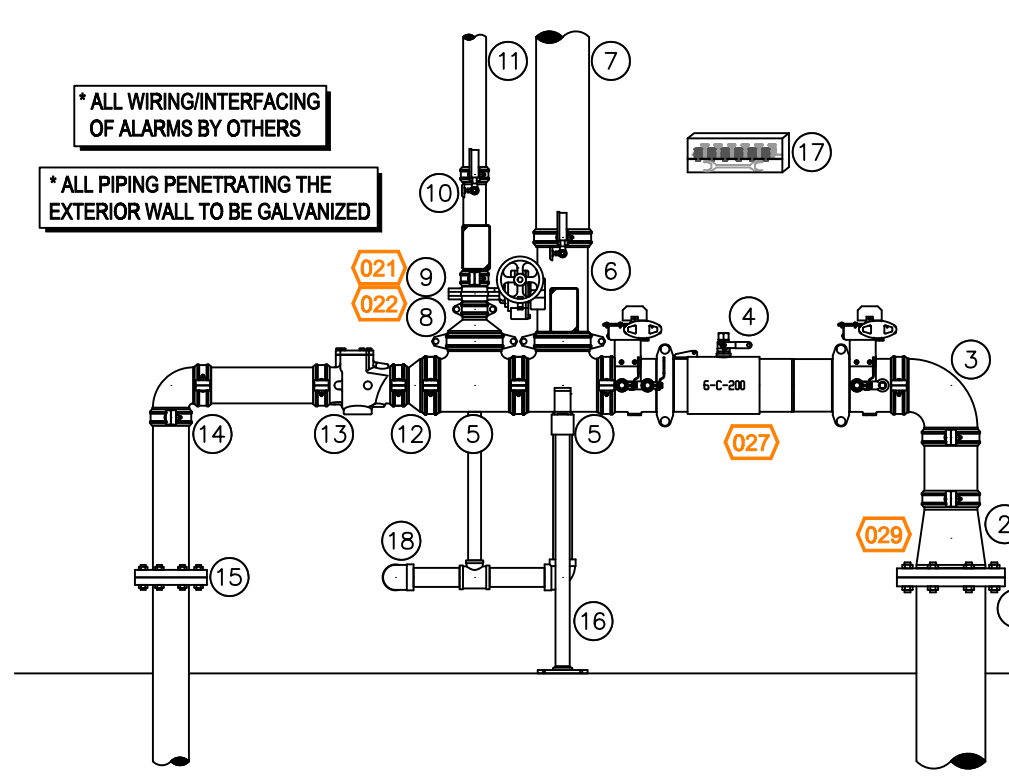
WET SYSTEM BLACK STEEL PIPING



**HANGER DETAILS**

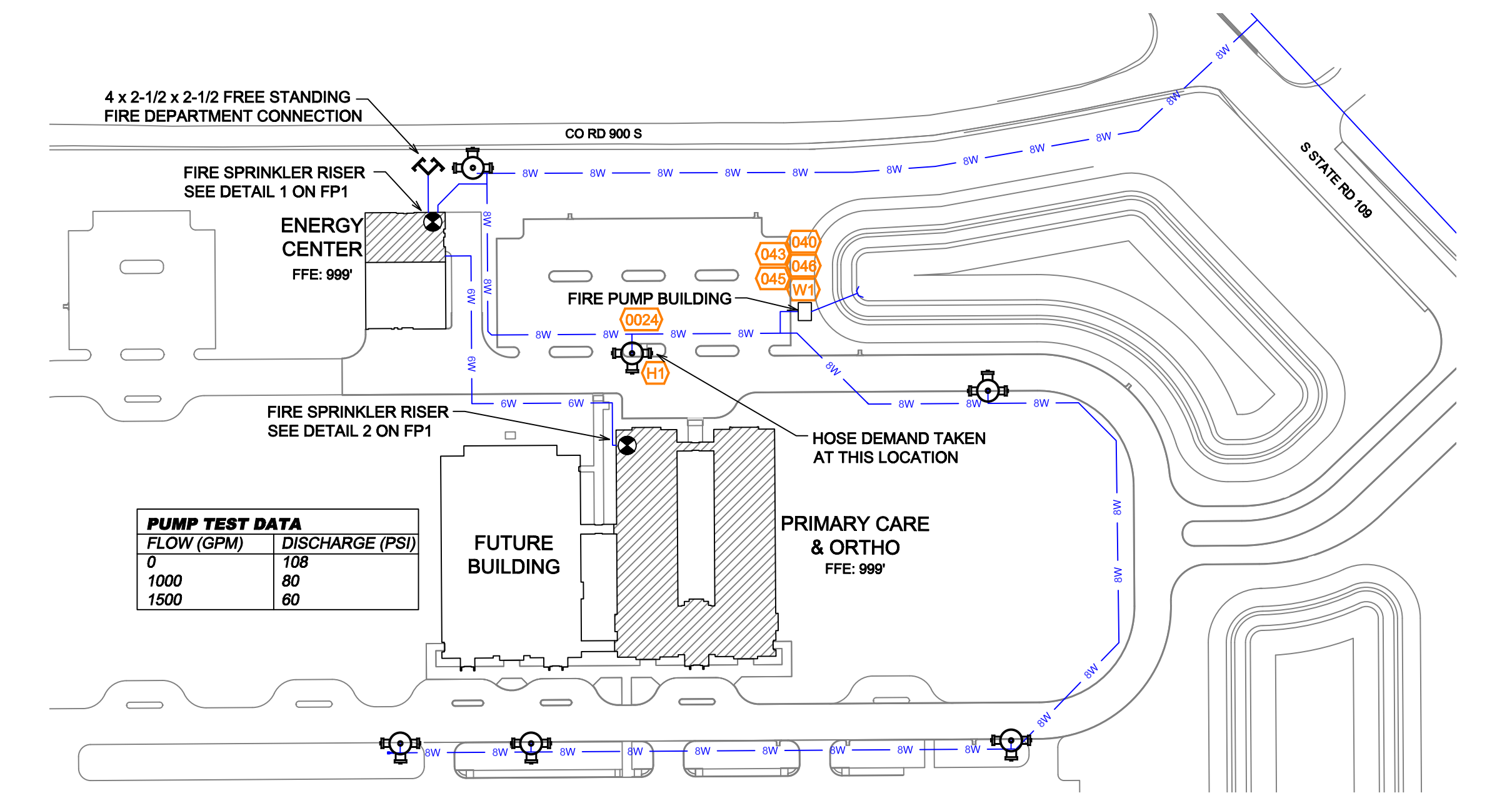
**NFPA 13 STEEL PIPE HANGER SPACING**  
(EXCEPT LIGHT WALL THIRD PIPING)

NOMINAL SIZE Inches	MAX SPACING feet
1"	12'-0"
1-1/4"	12'-0"
1-1/2"	15'-0"
2"	15'-0"
2-1/2"	15'-0"
3"	15'-0"
4" & LARGER	15'-0"



**1 RISER DETAIL**  
SCALE: 1/2" = 1'-0"

- ENERGY CENTER RISER LEGEND**
- 8" UNDERGROUND WATER SERVICE (BY OTHERS) (FLUSHING & TESTING OF THE UNDERGROUND SHALL BE COMPLETED PRIOR TO THE SPRINKLER SYSTEM HOOKUP. UNDERGROUND PAPERS ARE TO BE SUPPLIED TO THE TYP. CONTRACTOR BY THE G.C.)
  - 8" X 6" GROOVED CONCENTRIC REDUCER
  - 6" GROOVED 90
  - 6" AMES COLT C200 BACKFLOW GxG BFV w/ TAMPERS
  - 6" GROOVED TEE
  - 6" GROOVED COMMERCIAL RISER MANIFOLD w/ FLOW SWITCH, PRESSURE GAUGE, & TEST AND DRAIN w/ PRV
  - 6" FEED TO PRIMARY CARE & ORTHO BUILDING
  - 6" X 2-1/2" GROOVED CONCENTRIC REDUCER
  - 2-1/2" GROOVED BUTTERFLY VALVE w/ TAMPERS
  - 2-1/2" GROOVED COMMERCIAL RISER MANIFOLD w/ FLOW SWITCH, PRESSURE GAUGE, & TEST AND DRAIN w/ PRV
  - 2-1/2" TO SYSTEM
  - 6" X 4" GROOVED CONCENTRIC REDUCER
  - 4" GROOVED CHECK VALVE
  - 4" GROOVED 90
  - 4" OUT TO FDC
  - PIPE STAND
  - HEAD BOX
  - MAIN DRAIN PIPED OUTSIDE



**SITE PLAN**  
SCALE: 1" = 100'-0"

Symbol	Description
○	Hydraulic Reference Point
[re m]	Elev. Below Top of Steel
[re f]	Elev. Above Finished Floor
+ (re) 10'-0"	Elev. of Top of Steel
⊕	Ceiling Height
⊖	Denotes Hanger Location
○	Rise up or down

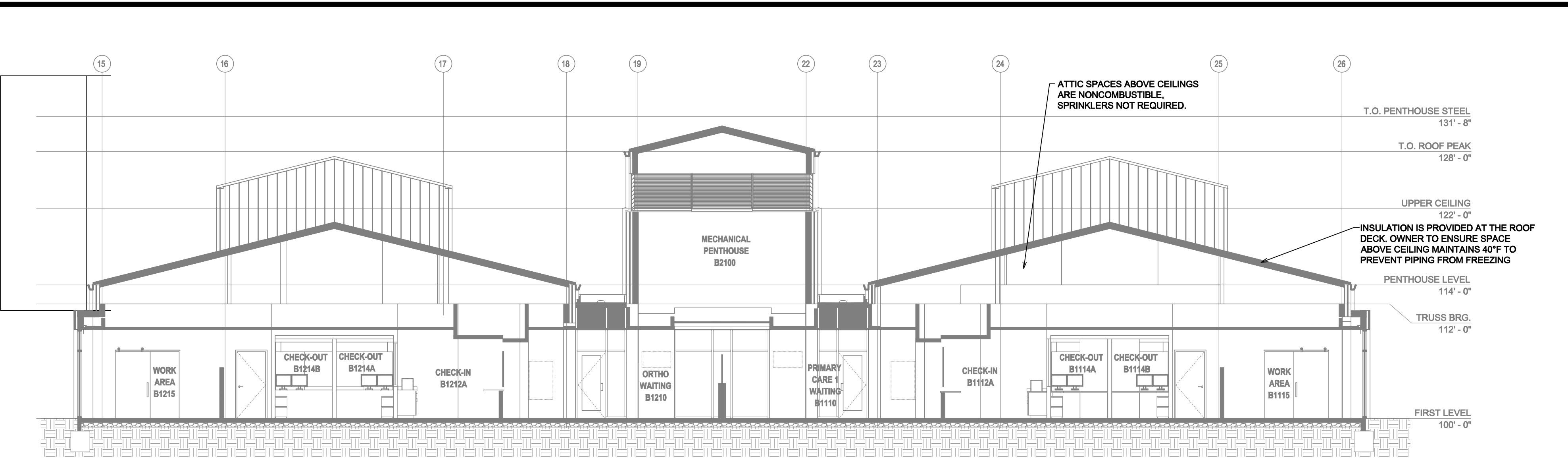
CONTRACTOR: \_\_\_\_\_  
ADDRESS: \_\_\_\_\_

REVISION			
DATE	DESCRIPTION	BY	
04/23/24	ADDED SITE FIRE PUMP / REVISED CALCS	JGB	
06/20/24	ADDED CONCEALED SPACE PROTECTION	JGB	

IMPORTANT  
TO PREVENT FREEZING OF WATER IN WET PIPE SPRINKLER PIPING, OWNERS TO PROVIDE SUFFICIENT HEAT THROUGHOUT AREAS WHERE SPRINKLER PIPES ARE INSTALLED, UNLESS AN ANTI-FREEZE SYSTEM.

**HENRY COMMUNITY HEALTH**  
IN-109 & C.R. W 650 S, KNIGHTSTOWN, IN 46148  
**SPRINKLER PLAN**

NORTH	
DESIGNER	JGB
SCALE	1/8" = 1'-0"
CHECK BY	DS
FILE NUMBER	
APPROVAL	STATE & LOCAL
DATE	01-13-2023
DRAWING NO.	FP-1



**(A) BUILDING SECTION**  
SCALE: 1/8" = 1'-0"

Design Area # 02 HAZARD: OH1  
Zone: 2 System Type: WET  
Location: MECHANICAL PENTHOUSE  
Flowing Outlets: 8  
Density: 0.15 Remote Area: 902  
Req'd @ Base of Riser  
Flow 156.1 gpm @ 39.9 psi  
Available @ Pump Discharge  
Flow 406.1 gpm @ 96.1 psi  
Calculation Safety: 50.6 psi  
Includes 250 gpm Hose allowance

NOTE: ENTIRE MECHANICAL MEZZANINE INCLUDED IN CALCULATION

Design Area # 05 HAZARD: LIGHT  
Zone: 2 System Type: WET  
Location: CONCEALED SPACE  
Flowing Outlets: 13  
Density: 0.10 Remote Area: 1258  
Req'd @ Base of Riser  
Flow 210.5 gpm @ 26.9 psi  
Available @ Pump Discharge  
Flow 310.5 gpm @ 98.3 psi  
Calculation Safety: 66.5 psi  
Includes 100 gpm Hose allowance

NOTE: 1500 S.F. INCREASED BY 30% TO 1950 S.F. DUE TO SLOPED CEILING. THEN REDUCED BY 37.75% TO 1214 S.F. DUE TO CEILING HEIGHT PER NFPA 13 FIG. 11.2.3.2.3.1

Design Area # 03 HAZARD: LIGHT  
Zone: 2 System Type: WET  
Location: NURSE WORK  
Flowing Outlets: 15  
Density: 0.10 Remote Area: 1550  
Req'd @ Base of Riser  
Flow 304.7 gpm @ 59.6 psi  
Available @ Pump Discharge  
Flow 404.7 gpm @ 96.1 psi  
Calculation Safety: 29.2 psi  
Includes 100 gpm Hose allowance

NOTE: 1500 S.F. CALCULATED. NO AREA REDUCTION DUE TO CEILING HEIGHT OVER 20'-0"

Design Area # 04 HAZARD: LIGHT  
Zone: 2 System Type: WET  
Location: PRIMARY CARE WAITING  
Flowing Outlets: 8  
Density: 0.10 Remote Area: 957  
Req'd @ Base of Riser  
Flow 154.4 gpm @ 26.8 psi  
Available @ Pump Discharge  
Flow 254.4 gpm @ 99.3 psi  
Calculation Safety: 67.2 psi  
Includes 100 gpm Hose allowance

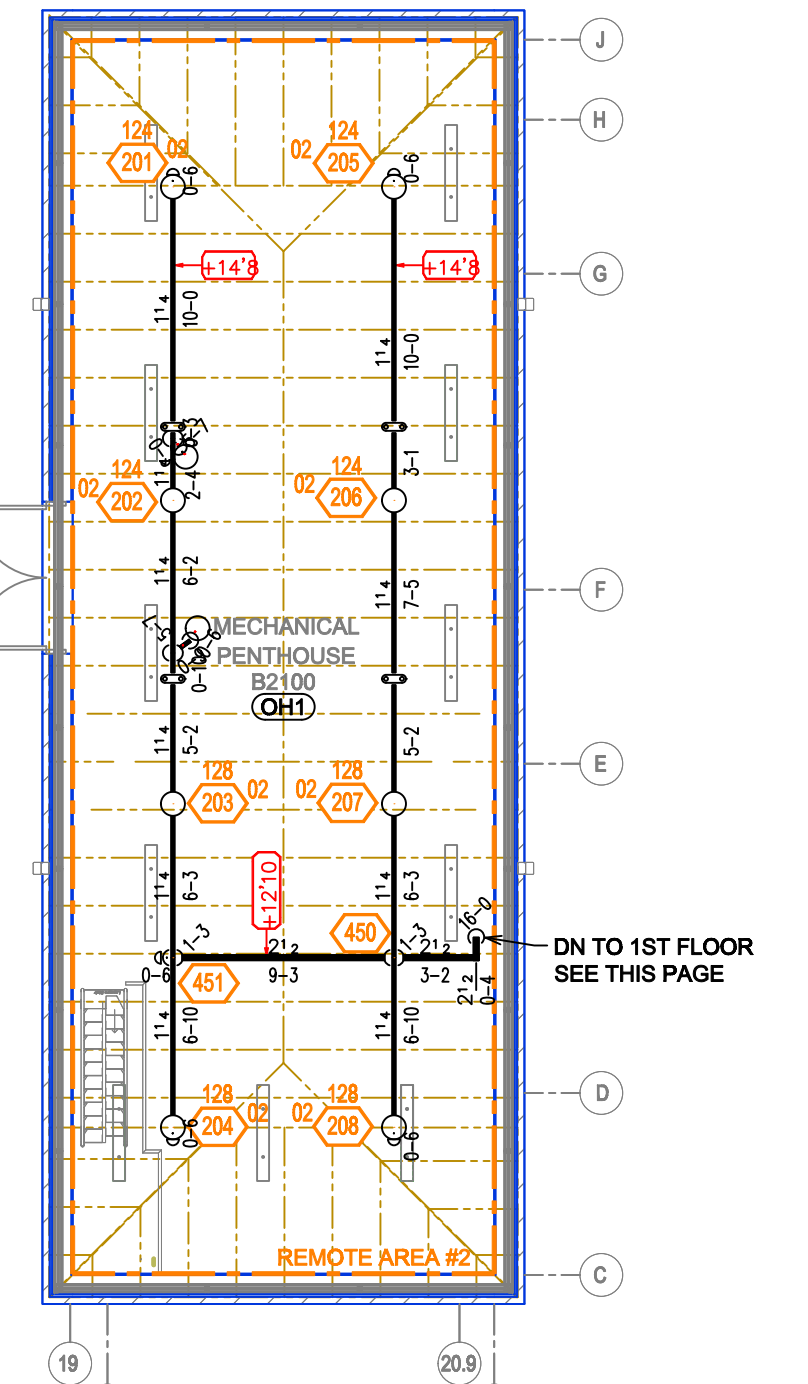
NOTE: 1500 S.F. REDUCED BY 40% TO 900 S.F. DUE TO CEILING HEIGHT PER NFPA 13 FIG. 11.2.3.2.3.1

SYM	CNT	POSITION	FINISH	TEMP	K	RPT	SW	MFG.	MODEL#	ESCUTCHEON	MAX SPACING
191	PENDENT	WHITE	200	5.60	1/2"	TY3031	TYCO	REX	CONCEALED	225 S.F. LH / 130 S.F. OH1	
112	UPRIGHT	BRASS	200	5.60	1/2"	TY313	TYCO	TY-FRB	N/A	130 S.F.	
102	UPRIGHT	BRASS	200	5.60	1/2"	TY313	TYCO	TY-FRB	N/A	130 S.F.	
20	PENDENT	WHITE	200	8.00	3/4"	VK404	VIKING	MIRAGE	CONCEALED	225 S.F.	
8	PENDENT	BRASS	200	5.60	1/2"	TY323	TYCO	TY-FRB	N/A	225 S.F.	

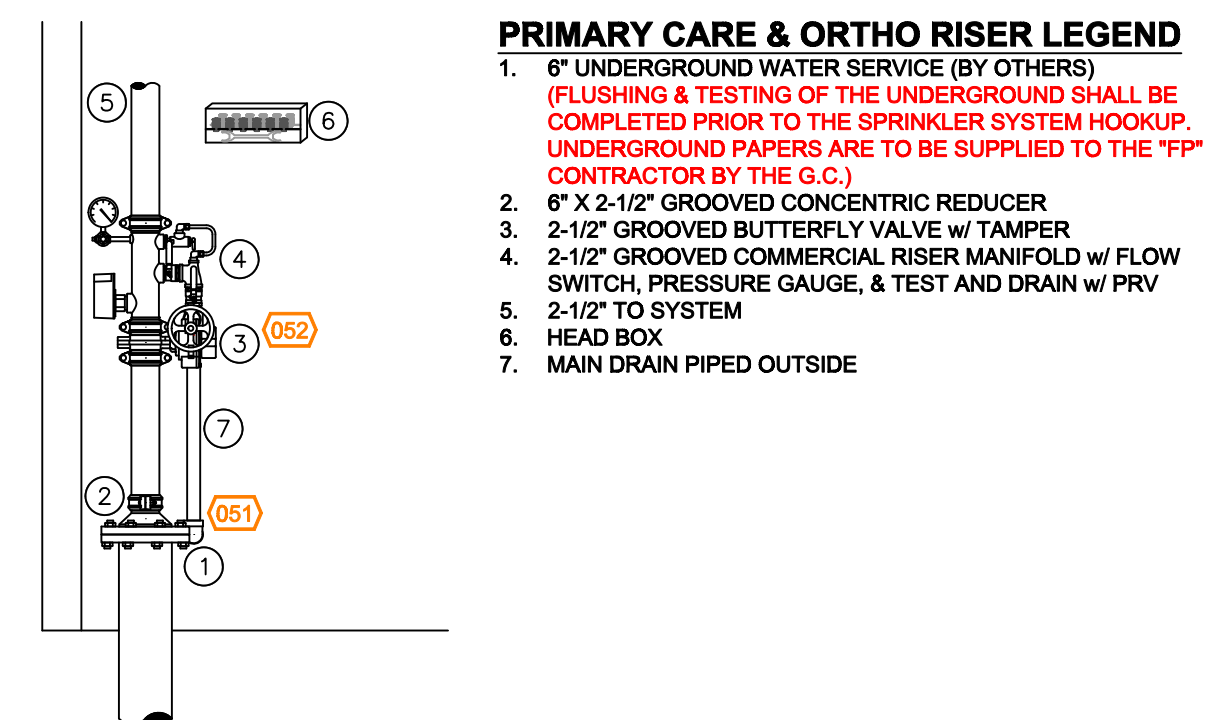
433 TOTAL HEADS

**SPRINKLER HEAD LEGEND**

PIPE LEGEND	
	WET SYSTEM BLACK STEEL PIPING



**(A) MECH. PENTHOUSE FIRE SPRINKLER PLAN**  
SCALE: 1/8" = 1'-0"



**(1) RISER DETAIL**  
SCALE: 1/2" = 1'-0"

**(A) 1ST FLOOR FIRE SPRINKLER PLAN**  
SCALE: 1/8" = 1'-0"

Symbol	Description
	Hydraulic Reference Point
	Elev. Below Top of Steel
	Elev. Above Finished Floor
	Elev. of Top of Steel
	Ceiling Height
	Denotes Hanger Location
	Rise up or down

CONTRACTOR:		
ADDRESS:		
REVISION		
DATE	DESCRIPTION	BY
04/23/24	ADDED SITE FIRE PUMP / REVISED CALCS	JGB
06/20/24	ADDED CONCEALED SPACE PROTECTION	JGB

**IMPORTANT**  
TO PREVENT FREEZING OF WATER IN WET PIPE SPRINKLER PIPING, OWNERS TO PROVIDE SUFFICIENT HEAT THROUGHOUT AREAS WHERE SPRINKLER PIPES ARE INSTALLED, UNLESS AN ANTI-FREEZE SYSTEM.

**HENRY COMMUNITY HEALTH**  
IN-109 & C.R. W 650 S, KNIGHTSTOWN, IN 46148  
**SPRINKLER PLAN**

NORTH	
DESIGNER	JGB
SCALE	1/8" = 1'-0"
CHECK BY	DS
FILE NUMBER	
APPROVAL STATE & LOCAL	
DATE	01-13-2023
DRAWING NO.	FP-2