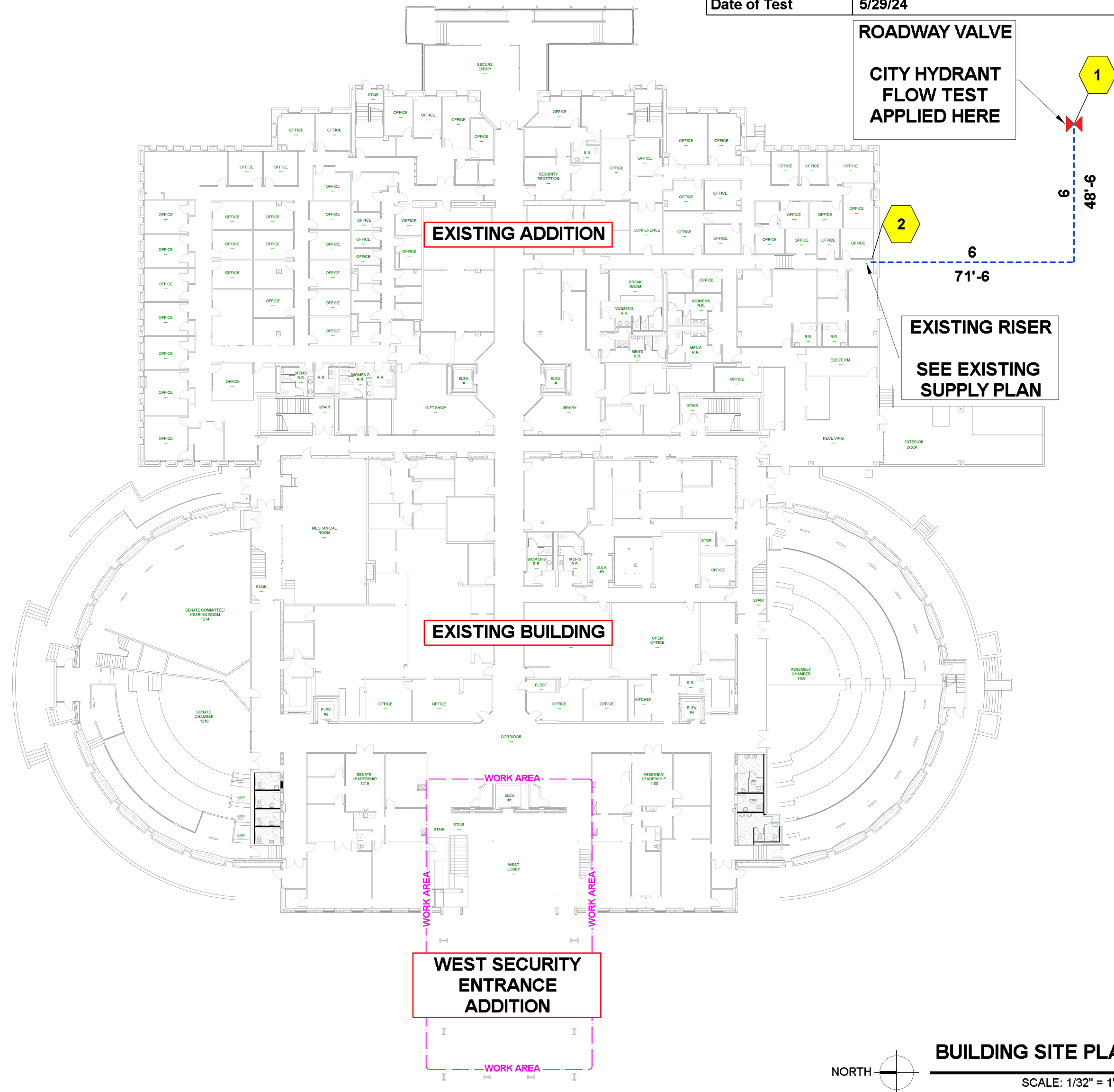
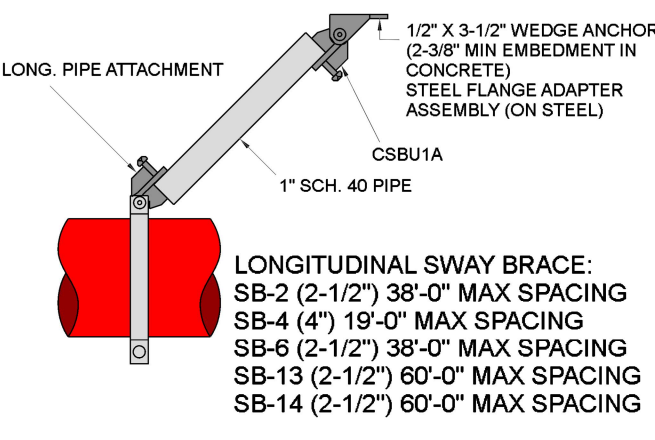
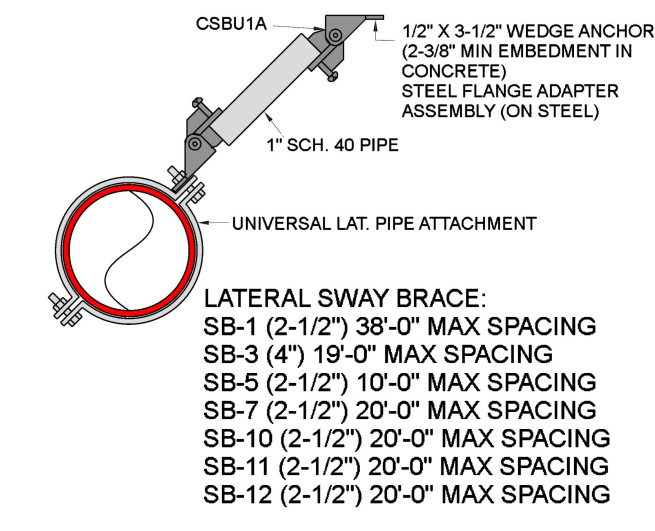


Supply Flow Test Data	
Test Conducted By	Provided by Carson City Water Dept.
Static Pressure	88.000
Residual Pressure	80.000
Flow	1575.00
Date of Test	5/29/24

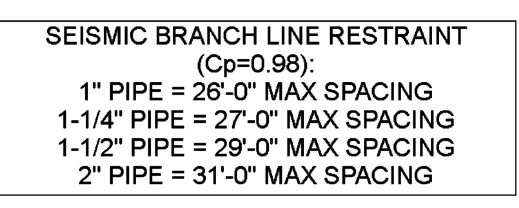
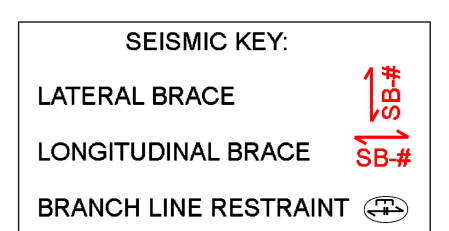


GENERAL INFORMATION

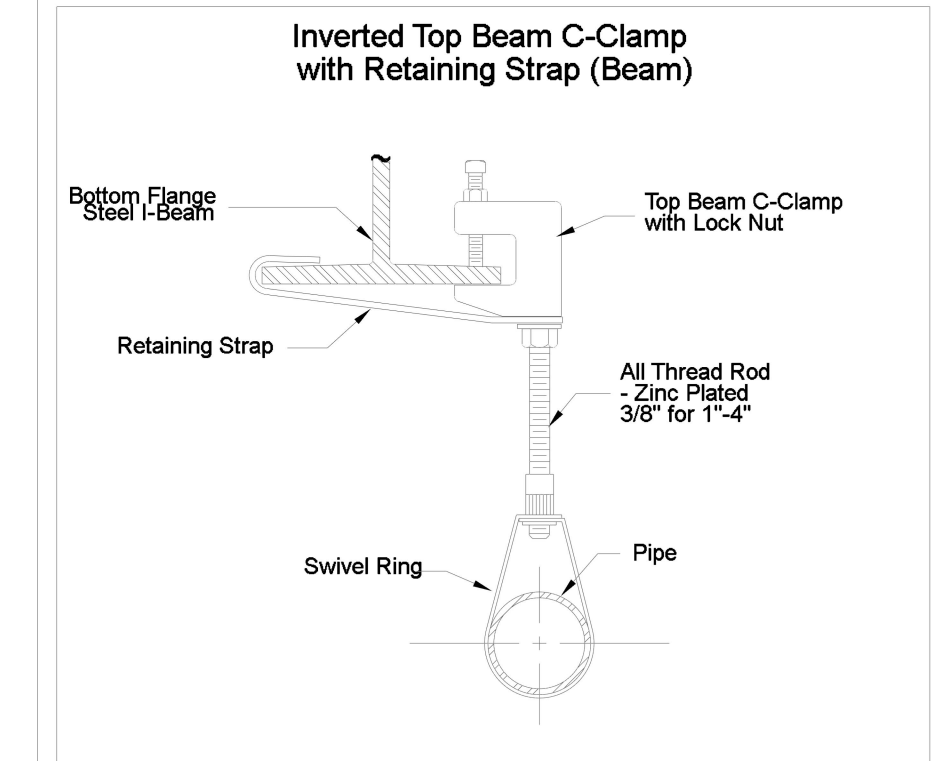
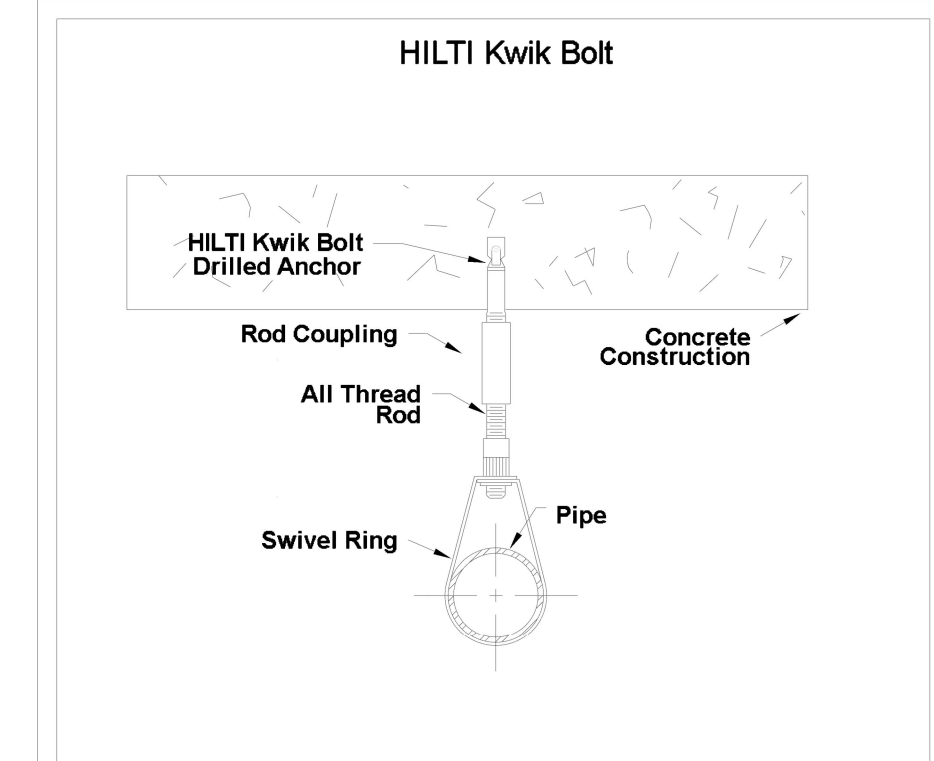
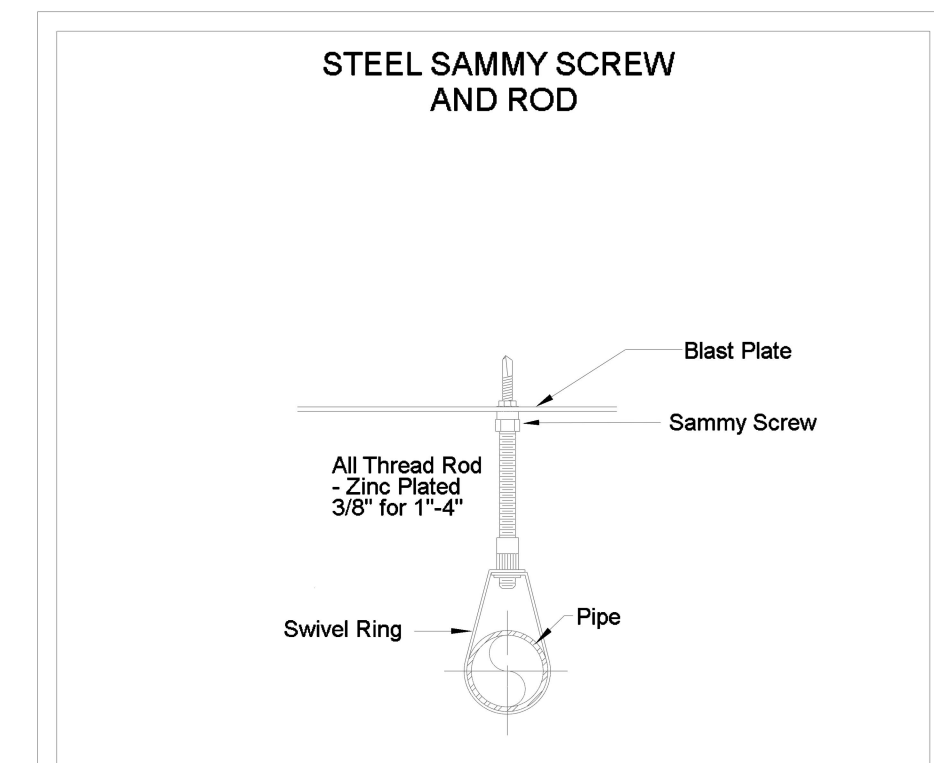
- INTERNATIONAL BUILDING CODE (2018)
 - OCCUPANCY: TYPE A-3, B
 - TYPE OF CONSTRUCTION: I-B
 - FOR SPRINKLERED AREAS SEE ATTACHED CHART
 - DESIGN & INSTALLATION STANDARDS: NFPA-13 (2016)
 - AUTHORITY HAVING JURISDICTION (AHJ): NV STATE FIRE MARSHAL
- SPRINKLER PIPE TYPES:
 - EXISTING-
 - 1"-2" PIPE IS SCHEDULE 40 BLACK STEEL w/ THREADED FITTINGS
 - 1-1/2" THROUGH 4" MAINS & BRANCH LINES IS BLK SCHEDULE 10 w/ GROOVED FITTINGS
 - EXPANSION-
 - 1" PIPE TO BE SCHEDULE 40 BLACK STEEL w/ THREADED FITTINGS
 - 1-1/4" THROUGH 4" MAINS & BRANCH LINES TO BE BLK SCHEDULE 10 w/ GROOVED FITTINGS
 - MAINS & BRANCH LINES TO BE ROLL-GROOVED BLK SCHEDULE 10
 - 2" AND LARGER TO USE GROOVED SHORT RADIUS FITTINGS
- DESIGN CRITERIA:
 - LIGHT HAZARD AREAS INCLUDE OFFICE/ADMINISTRATIVE, RESTROOMS, AND CORRIDORS
 - ORDINARY HAZARD GROUP I AREAS INCLUDE MECHANICAL, ELECTRICAL, SMALL STORAGE ROOMS, AND FOOD SERVICE AREAS
 - REMOTE AREA REDUCTIONS HAVE BEEN TAKEN WHERE APPLICABLE PER NFPA 13 SEC. 19.3.3.2.3
- NOTES:
 - ALL MATERIAL TO BE NEW AND MEET U.L. STANDARDS
 - HANGERS TO BE INSTALLED IN ACCORDANCE WITH NFPA 13 - SEE PLAN FOR HANGING
 - IN AREAS WITH FINISHED CEILINGS, INSTALL CONCEALED PENDENT SPRINKLERS WITH DEFLECTOR 1" TO 12" BELOW CEILING, OR PER LISTING
 - IN AREAS OF EXPOSED CONSTRUCTION WITH BEAMS SPACED OVER 7'-6" ON CENTER, INSTALL UPRIGHT SPRINKLERS WITH DEFLECTOR 1" TO 12" BELOW DECK, OR PER LISTING
 - IN AREAS OF EXPOSED CONSTRUCTION WITH BEAMS SPACED BETWEEN 7'-6" AND 9'-0" ON CENTER, INSTALL UPRIGHT SPRINKLERS WITH DEFLECTOR 1" TO 6" BELOW BOTTOM OF STEEL AND A MAXIMUM OF 22" BELOW DECK
 - AT THE DISCRETION OF THE INSTALLER, INSTALL AIR VENTS AT HIGH POINTS OF THE SYSTEM PER NFPA 13 8.16.8 USING ONE OF THE FOLLOWING METHODS:
 - MANUAL VALVE, MINIMUM 1/2" IN SIZE
 - AUTOMATIC AIR VENT
 - OTHER APPROVED MEANS
- SYMBOLS USED ON DRAWINGS:
 - *x x FF ☐ PIPE ELEVATION ABOVE FINISH FLOOR
 - *x x TS ☐ PIPE ELEVATION BELOW TOP OF STEEL
 - OH1 ROOM HAZARD CLASSIFICATION (ALL ROOMS ARE CONSIDERED LIGHT HAZARD U.N.O.)
 - HYDRAULIC CALCULATION JUNCTION POINT
 - 9'-0" CEILING HEIGHT (9'-0" CEILING HEIGHT U.N.O.)
 - FIRE RATED WALL
 - WET BLACK STEEL PIPE
 - EXISTING BLACK STEEL PIPE
 - AREAS NOT REQUIRING PROTECTION PER NFPA 13 8.15.1.2.1
 - NEW STEEL STRUCTURE
 - EXISTING STEEL STRUCTURE
- SCOPE OF WORK:
 - INSTALL THREE-ZONE WET SYSTEM TO COVER ALL AREAS OF WEST LOBBY EXPANSION. NEW SYSTEMS FED FROM EXISTING BUILDING STANDPIPE, ZONED PER FLOOR.
 - ALL AREAS OF THE BUILDING TO BE INSTALLED AND COVERED IN ACCORDANCE WITH THE LOCAL AUTHORITY HAVING JURISDICTION AND PER NFPA 13.



SEISMIC DETAILS



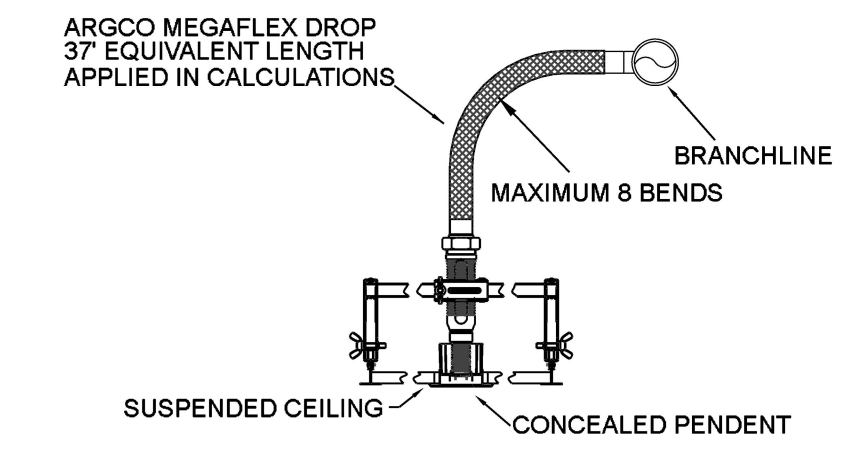
Sprinkler Legend		Notes	MAX. Coverage	Escutcheon	Temp	Finish	Response	Size	Type
Symbol	Manufacturer	SIN	Model	Quantity	K-Factor	Quantity	Model	Flush II	Quantity
●	Tyco	TY3531	Royal	117	5.6	117	TY3531	White Plate	Concealed Pendent
●	Tyco	TY6521	ELCO	4	11.2	4	TY6521	White Plate	Upright
●	Tyco	TY313	TY-FRB	16	5.6	16	TY-FRB	White Plate	Upright
									Total = 137



MAXIMUM DISTANCE BETWEEN HANGERS (FT.-IN.)

8"	15-0
6"	15-0
4"	15-0
3"	15-0
2 1/2"	15-0
2"	15-0
1 1/2"	15-0
1 1/4"	15-0
1"	12-0
3/4"	12-0
NA	12-0

STEEL PIPE EXCEPT THREADED LIGHTWALL



HANGER DETAILS

N.T.S.

REVISIONS

REV.	DATE	DESCRIPTION

FIRE SPRINKLER PLANS

FIRE SPRINKLER DETAILS

LCB W. Security and Expansion
Legislative Council Bureau
401 South Carson St.
Carson City NV 89701

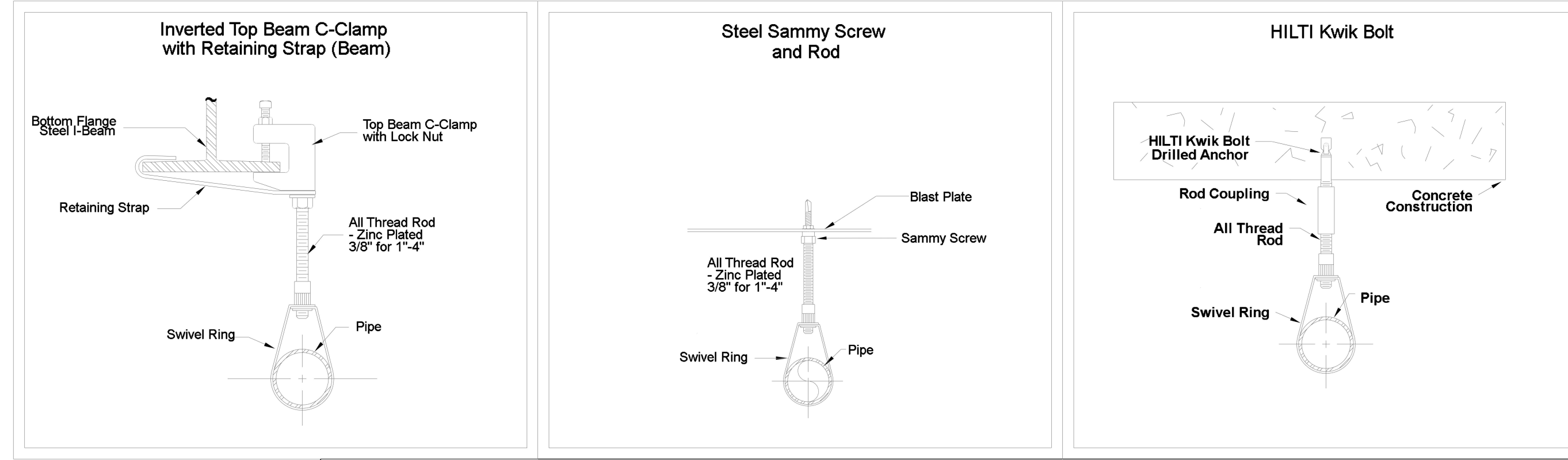
Sheet Title: _____
Project: _____

DRAWN BY: WWW
CHECKED BY: ADK
DATE: 6-24-24
PROJECT NO. #xxx

SCALE: AS NOTED

Sheet No: **FP-01**

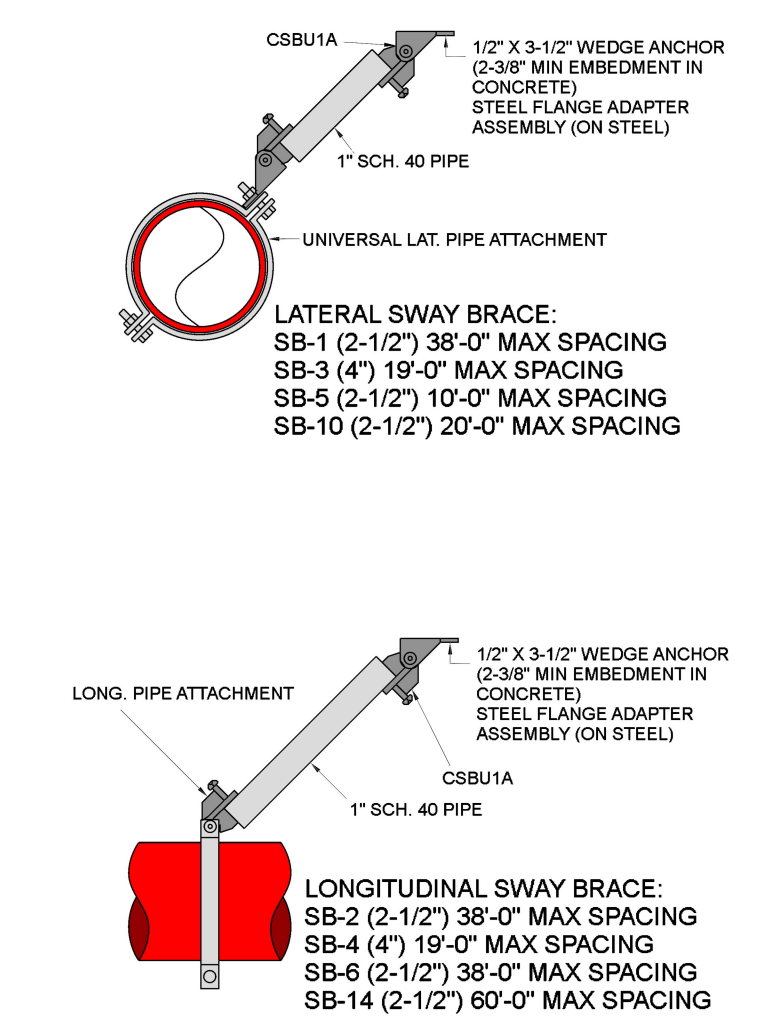
PRINTED ON 06/24/24 AT 14:03:29 LCB_Open_GL_AS2023.cad



HANGER DETAILS
N.T.S.

MAXIMUM DISTANCE BETWEEN HANGERS (FT.-IN.)

PIPE SIZE	3/4"	1"	1 1/4"	1 1/2"	2"	2 1/2"	3"	4"	6"	8"
STEEL PIPE EXCEPT THREADED LIGHTWALL	NA	12-0	12-0	15-0	15-0	15-0	15-0	15-0	15-0	15-0



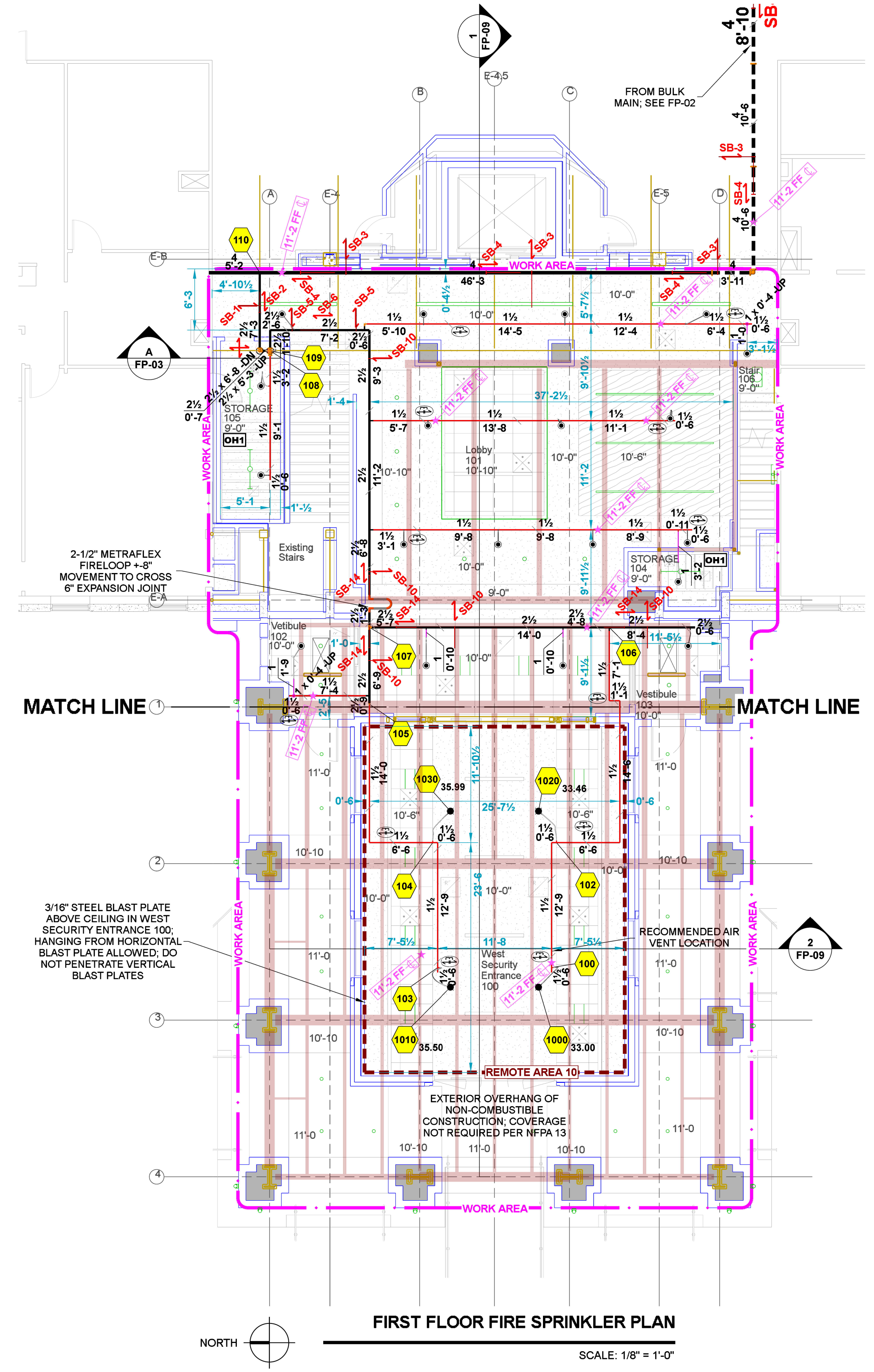
SEISMIC DETAILS

SEISMIC KEY:
 LATERAL BRACE 4#
 LONGITUDINAL BRACE 4#
 BRANCH LINE RESTRAINT

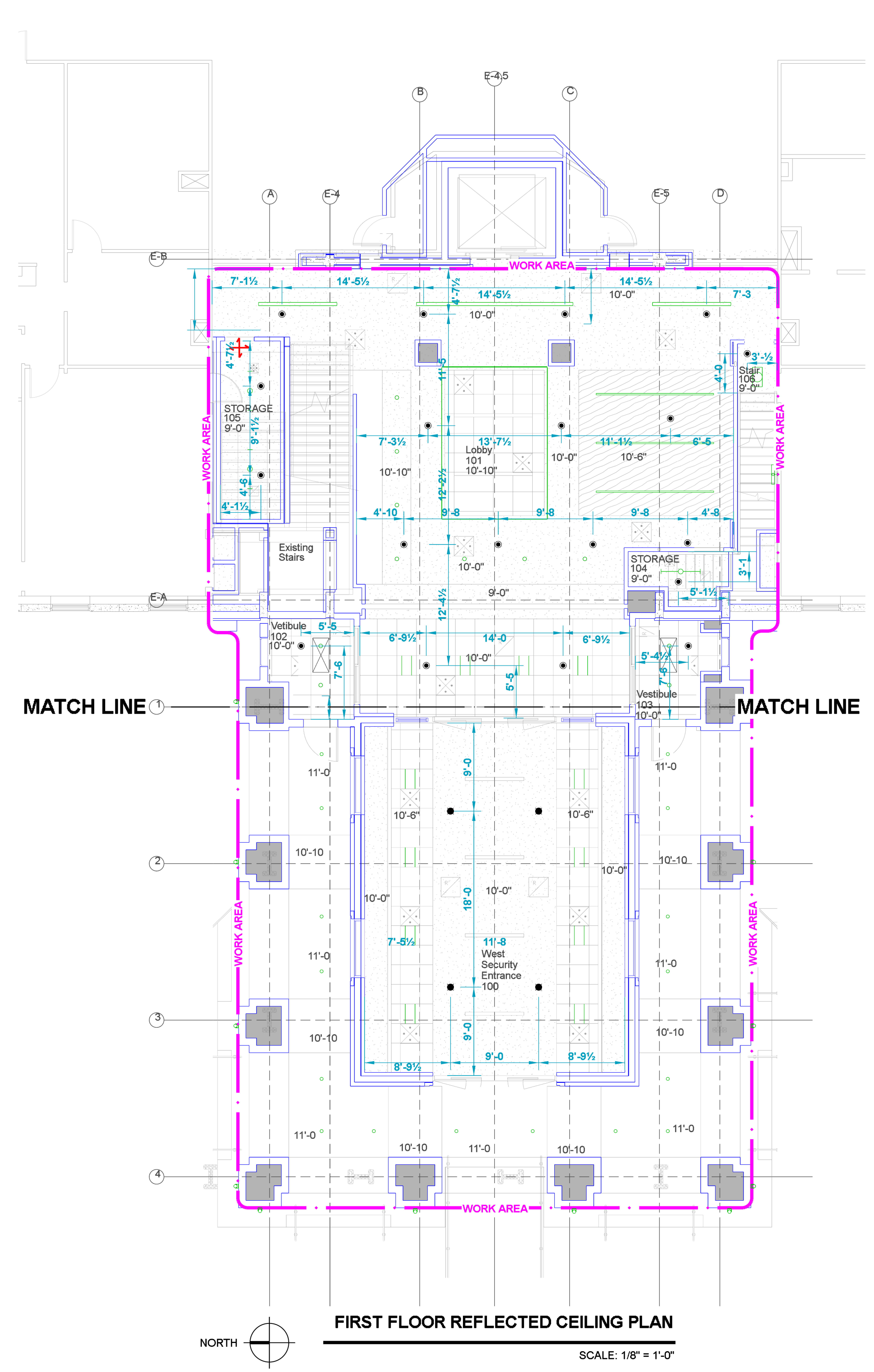
SEISMIC BRANCH LINE RESTRAINT (Cp=0.98):
 1" PIPE = 26'-0" MAX SPACING
 1-1/4" PIPE = 27'-0" MAX SPACING
 1-1/2" PIPE = 29'-0" MAX SPACING
 2" PIPE = 31'-0" MAX SPACING

Sprinkler Legend - First Floor

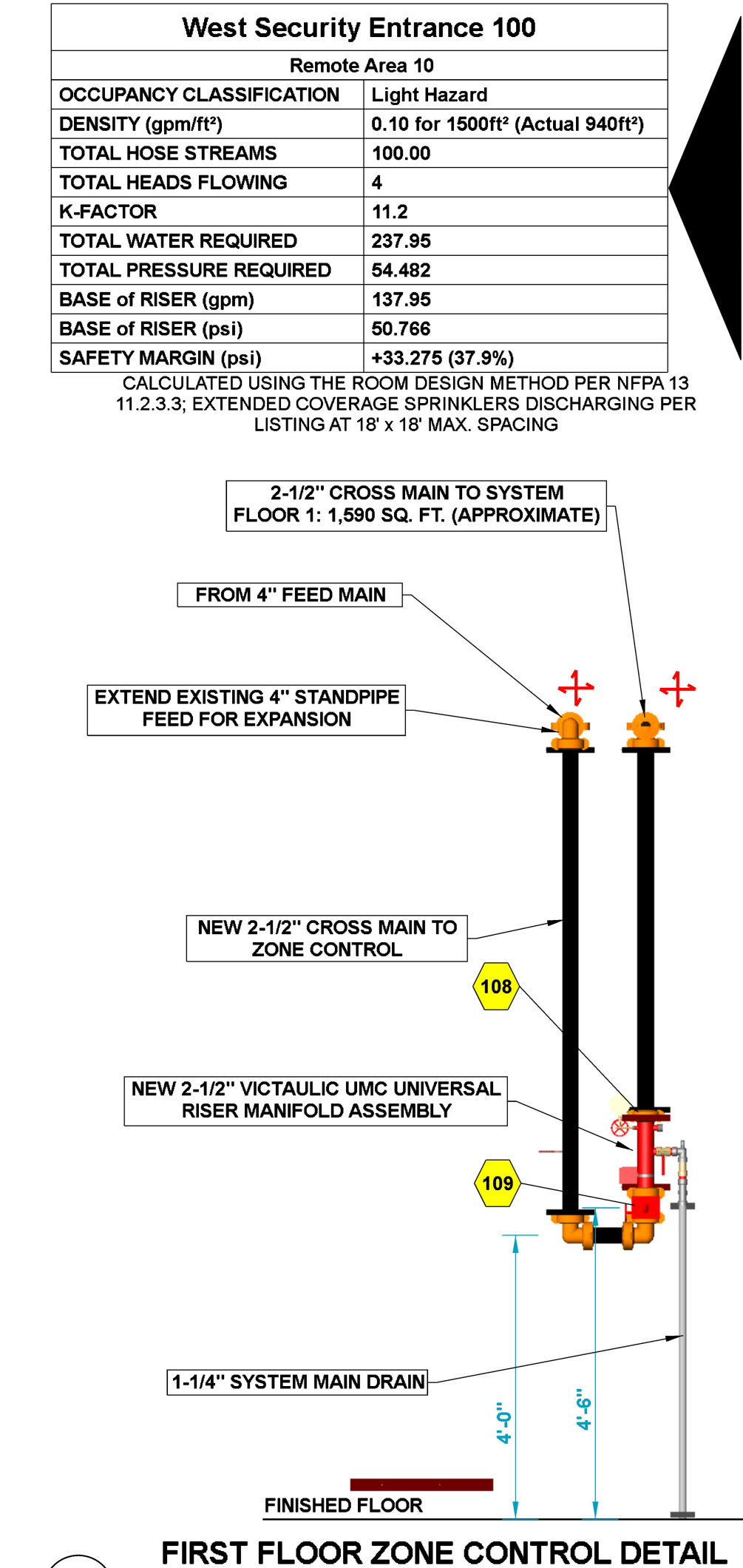
Symbol	Manufacturer	SIN	Model	Quantity	K-Factor	Type	Response	Temp	Finish	Escutcheon	MAX. Coverage	Notes
	Tyco	TY3531	Royal Flush II	19	5.6	Concealed Pendant	Quick	200°F	Brass	White Plate	15' x 15'	N/A
	Tyco	TY6522	ELCO	4	11.2	Concealed Pendant	Quick	212°F	Brass	White Plate	18' x 18'	Ext. Cov.
											Total = 23	



FIRST FLOOR FIRE SPRINKLER PLAN
SCALE: 1/8" = 1'-0"



FIRST FLOOR REFLECTED CEILING PLAN
SCALE: 1/8" = 1'-0"



FIRST FLOOR ZONE CONTROL DETAIL
N.T.S.

REVISIONS

NO.	DATE	DESCRIPTION

FIRE SPRINKLER PLANS

1ST FLOOR SYSTEM PLAN

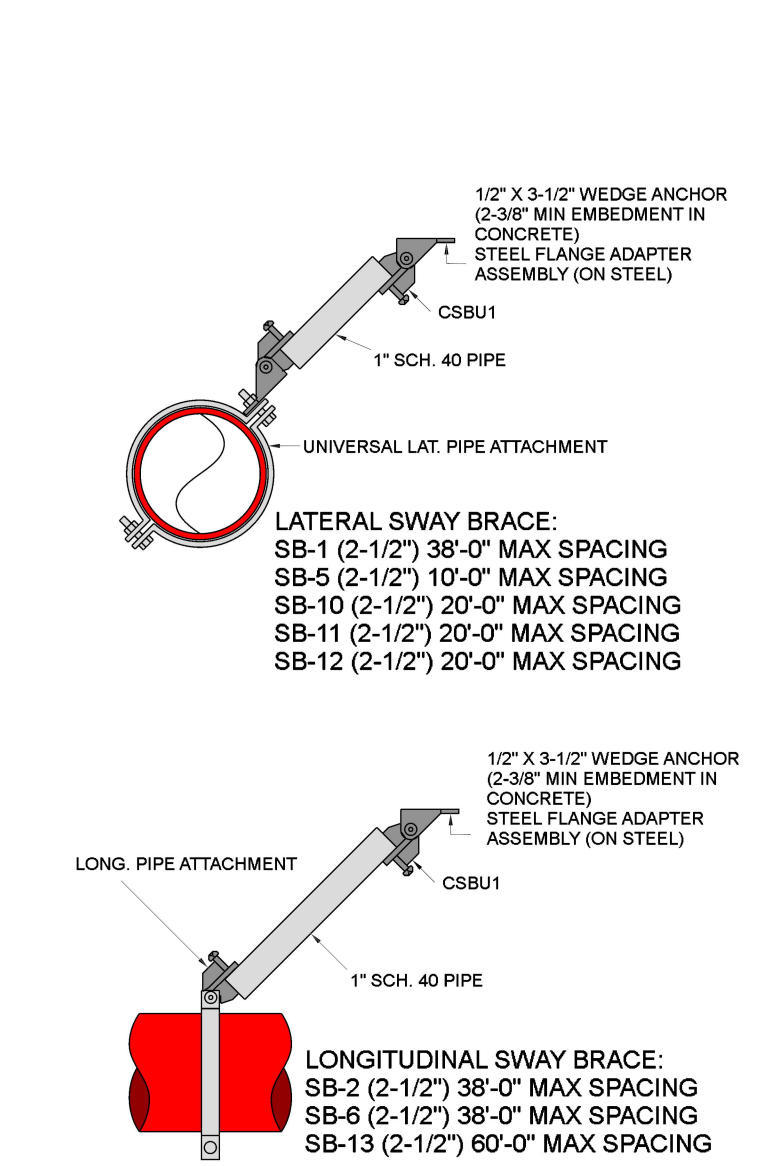
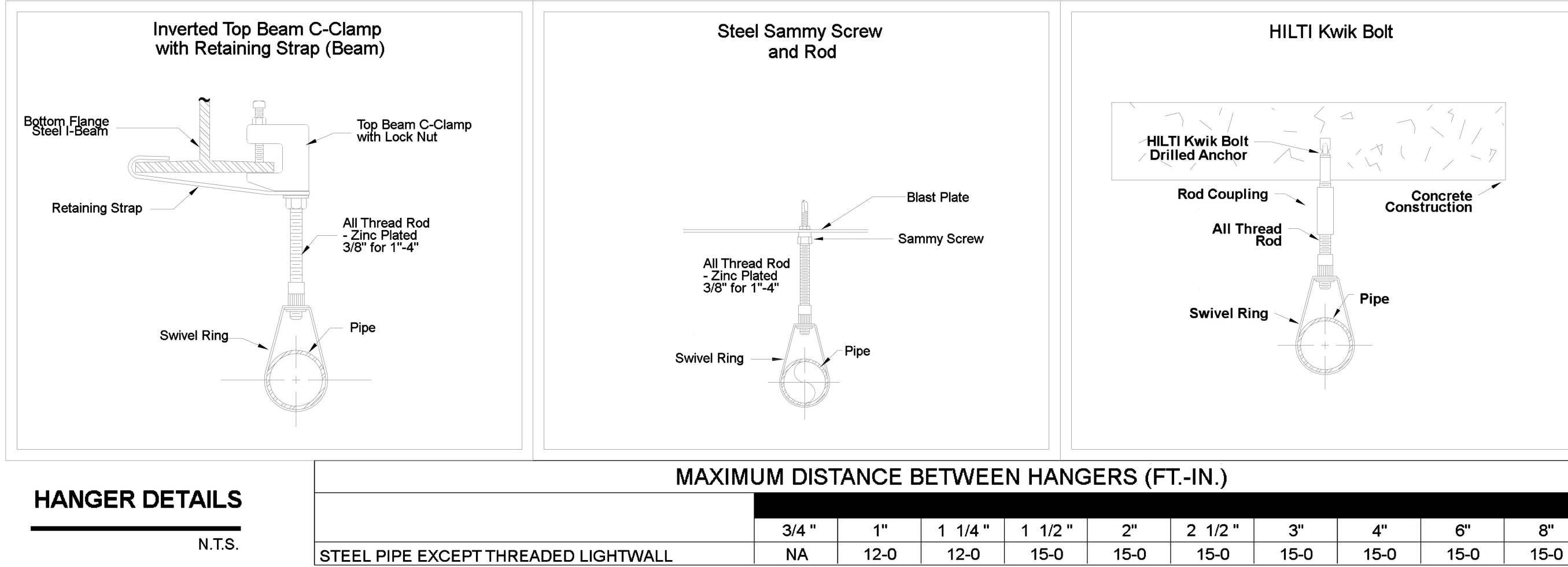
LCB W. Security and Expansion
 Legislative Council Bureau
 401 South Carson St.
 Carson City NV 89701

Drawn By: WWW
 Checked By: ADK
 Date: 6-24-24
 Project No: #xxx

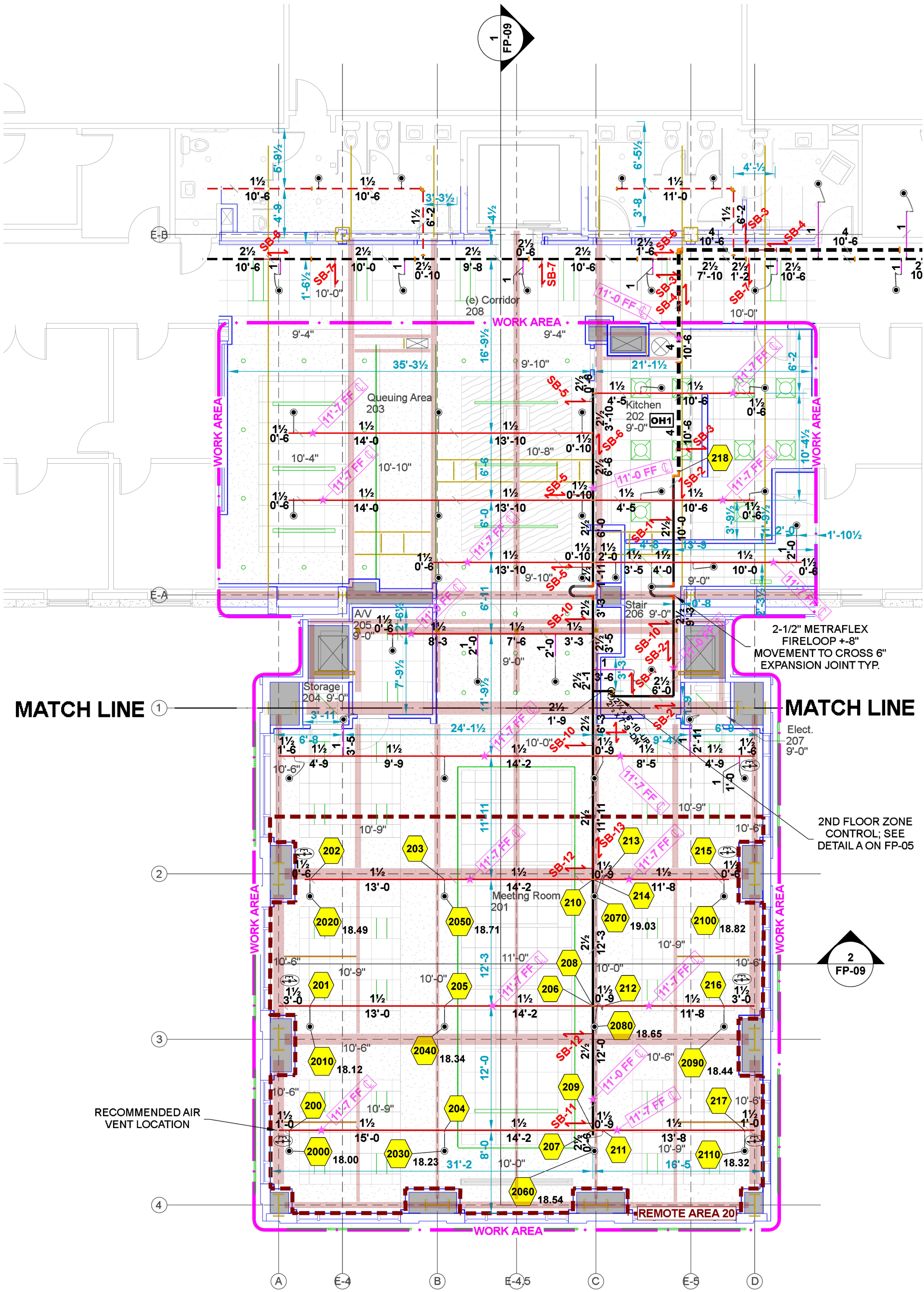
Scale: 1/8" = 1'-0"

Sheet No: **FP-03**

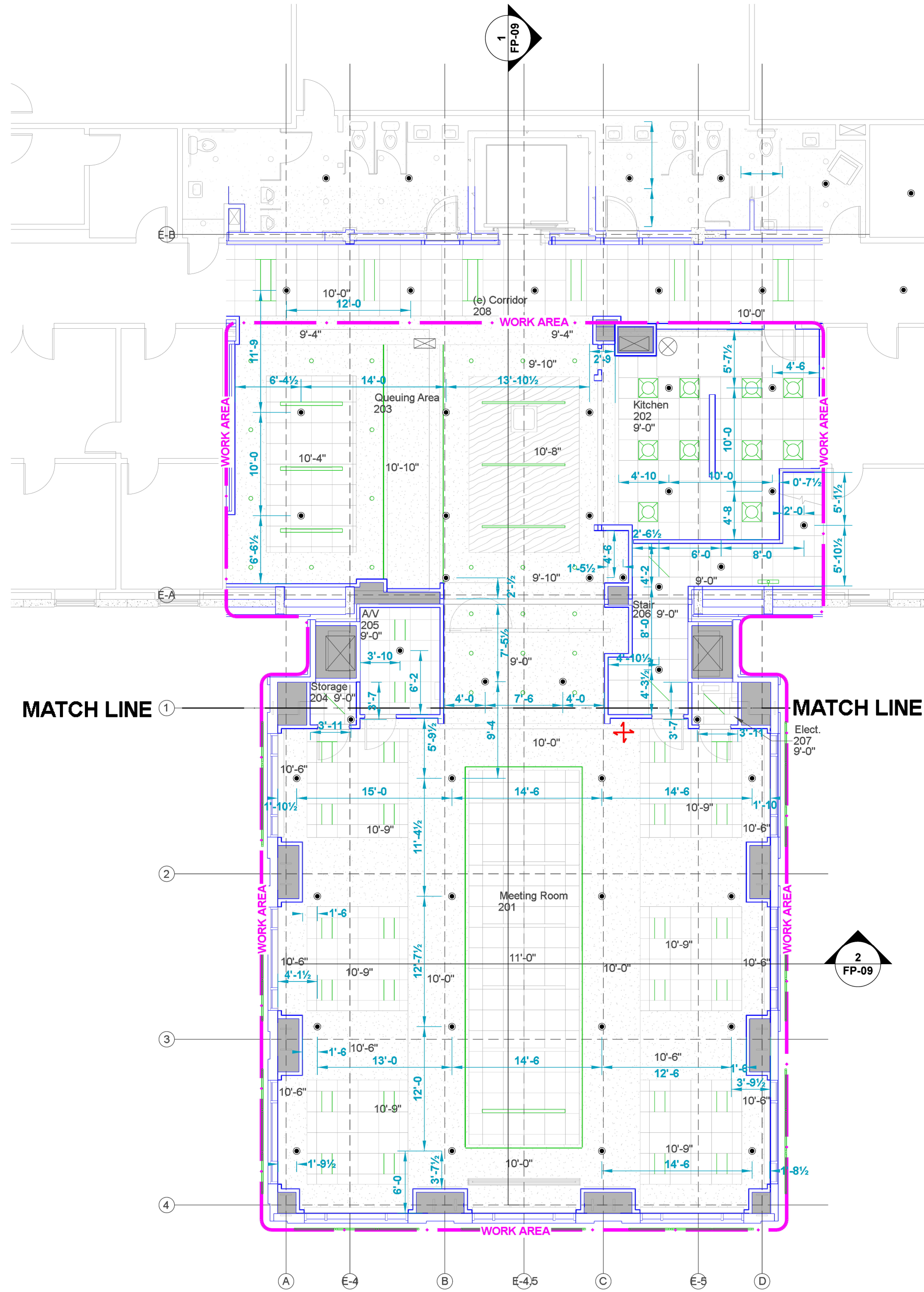
PRINTED ON 06/24/24 AT 14:03:48 LCB_Open_GI_AS2023.dwg



Symbol	Manufacturer	SIN	Model	Quantity	K-Factor	Type	Finish	Temperature	Escutcheon	MAX. Coverage	Notes
●	Tycos	TY9351	Royal Flush II	38	5.6	Concealed Pendant	Brass	200°F	White Plate	15' x 15'	N/A
				Total =	38						



SECOND FLOOR FIRE SPRINKLER PLAN
SCALE: 1/8" = 1'-0"

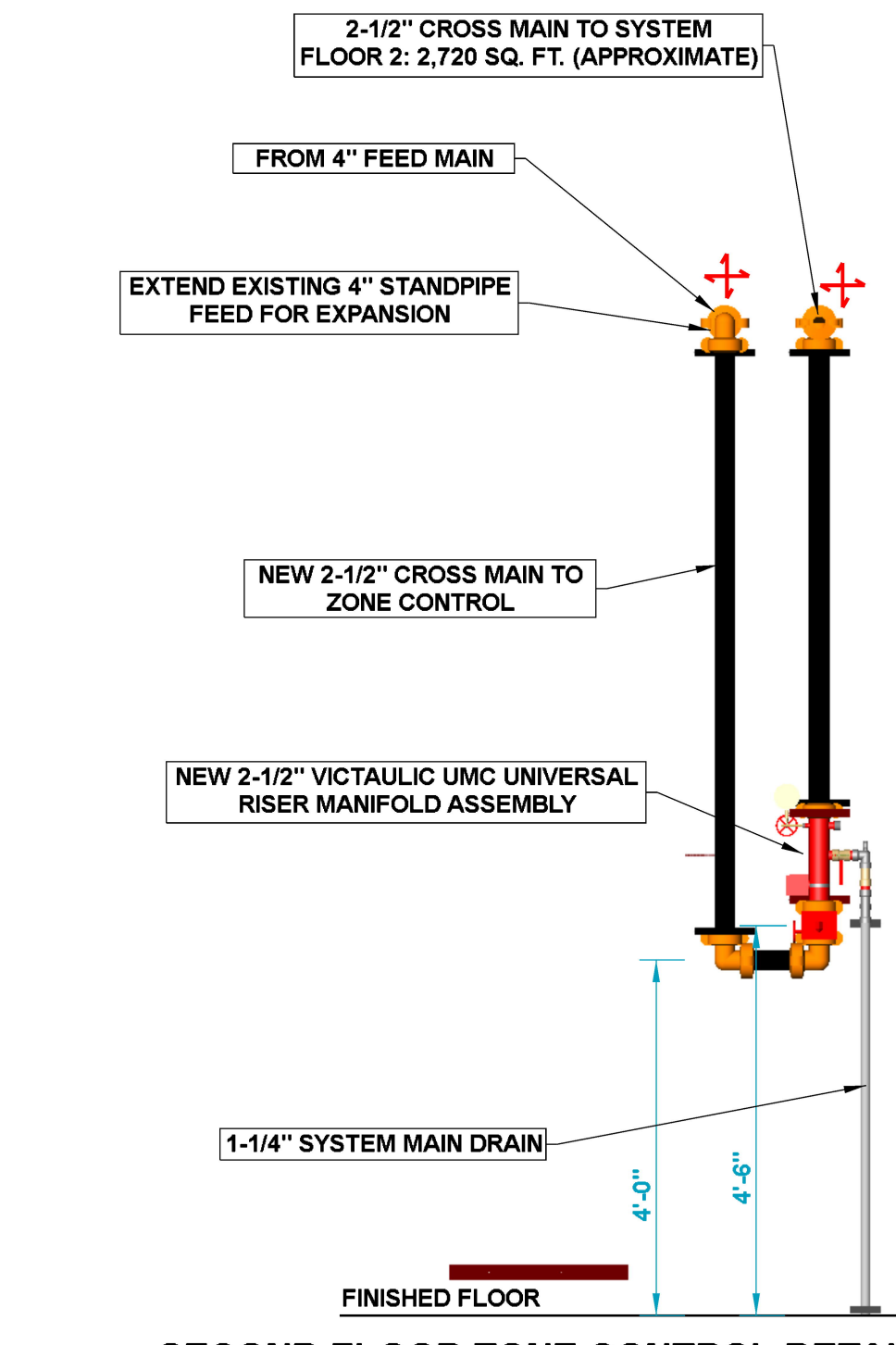


SECOND FLOOR REFLECTED CEILING PLAN
SCALE: 1/8" = 1'-0"

CALC PLACARD

MEETING ROOM 201	Remote Area 20
OCCUPANCY CLASSIFICATION	Light Hazard
DENSITY (gm/ft ³)	0.10 for 1500ft ³ (Actual 1734ft ³)
TOTAL HOSE STREAMS	100.00
TOTAL HEADS FLOWING	12
K-FACTOR	5.6
TOTAL WATER REQUIRED (GPM)	321.70
TOTAL PRESSURE REQUIRED	67.904
BASE OF RISER (gpm)	221.70
BASE OF RISER (psi)	64.067
SAFETY MARGIN (psi)	+19.672 (22.5%)

CALCULATED USING THE DENNIS WARE METHOD PER NFPA 13 11.2.3.2



SECOND FLOOR ZONE CONTROL DETAIL
SCALE: 1/8" = 1'-0"

REVISIONS

REV.	DATE	DESCRIPTION

FIRE SPRINKLER PLANS

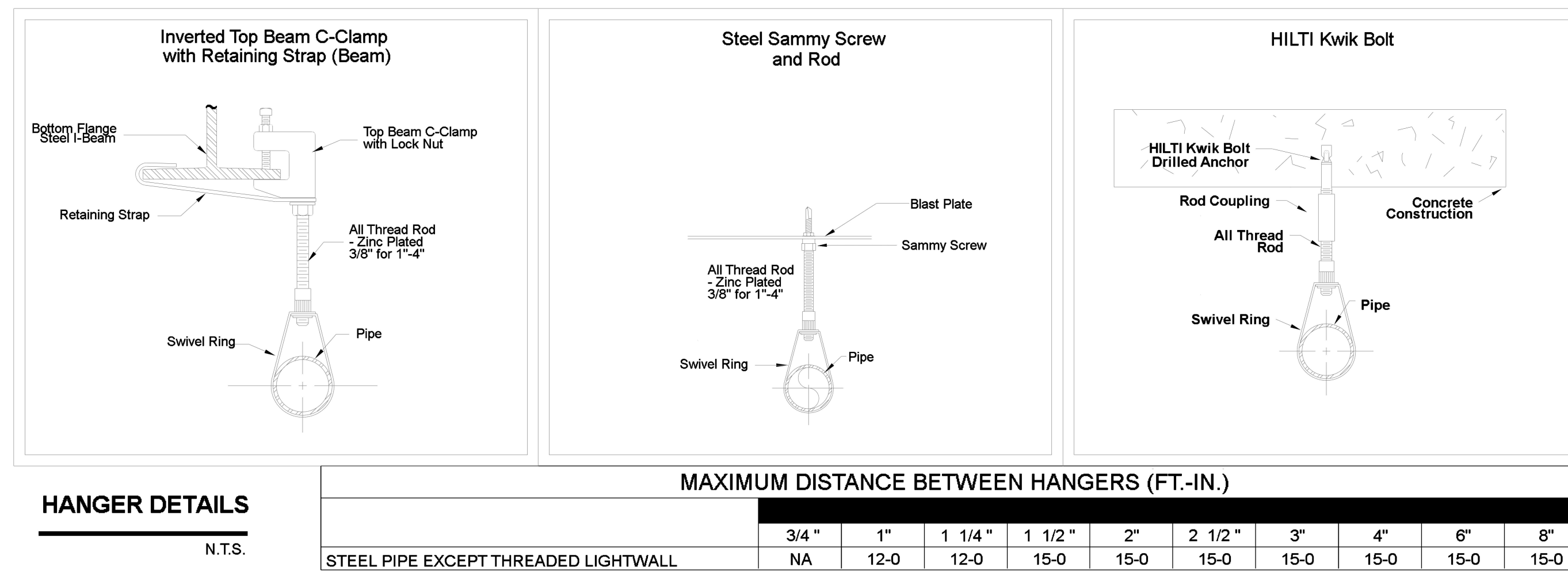
2ND FLOOR SYSTEM PLAN

LCB W. Security and Expansion
 Legislative Council Bureau
 401 South Carson St.
 Carson City NV 89701

Project: LCB_Open_GI_AS2023.sxd
 Sheet Title: 2ND FLOOR SYSTEM PLAN
 Project: LCB W. Security and Expansion
 Project No.: #xxx
 Scale: 1/8" = 1'-0"

DRAWN BY: WWW
 CHECKED BY: ADK
 DATE: 6-24-24
 PROJECT NO.: #xxx

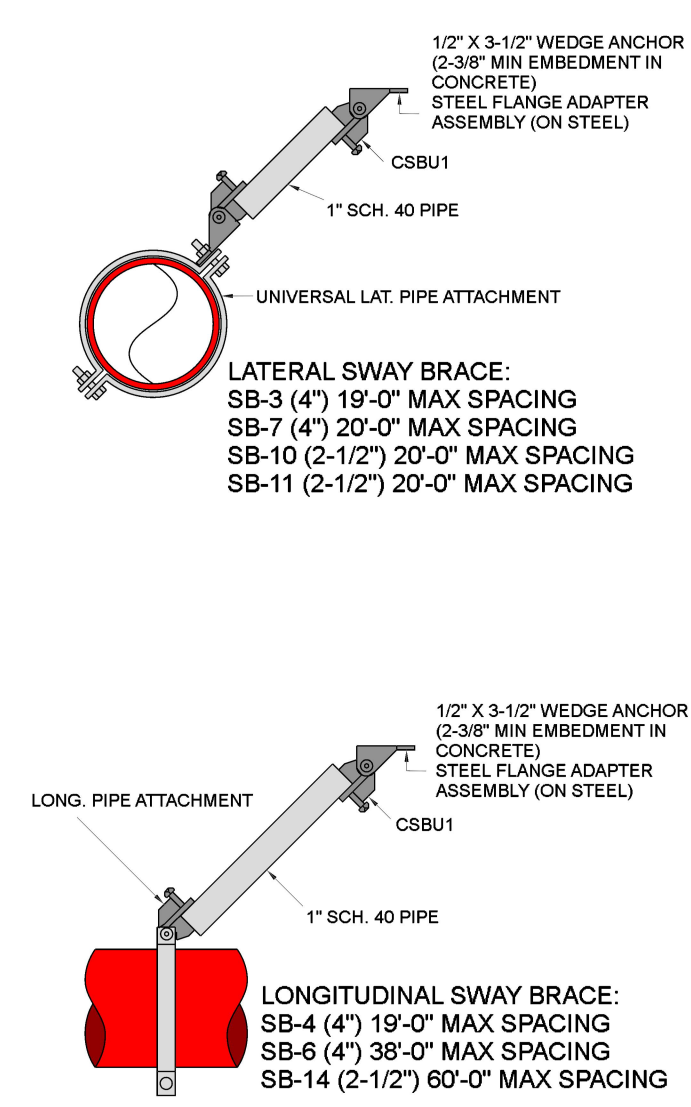
Sheet No.: **FP-05**
 N.T.S.



HANGER DETAILS
N.T.S.

MAXIMUM DISTANCE BETWEEN HANGERS (FT.-IN.)

STEEL PIPE EXCEPT THREADED LIGHTWALL	3/4"	1"	1 1/4"	1 1/2"	2"	2 1/2"	3"	4"	6"	8"
	NA	12-0	12-0	15-0	15-0	15-0	15-0	15-0	15-0	15-0



SEISMIC KEY:

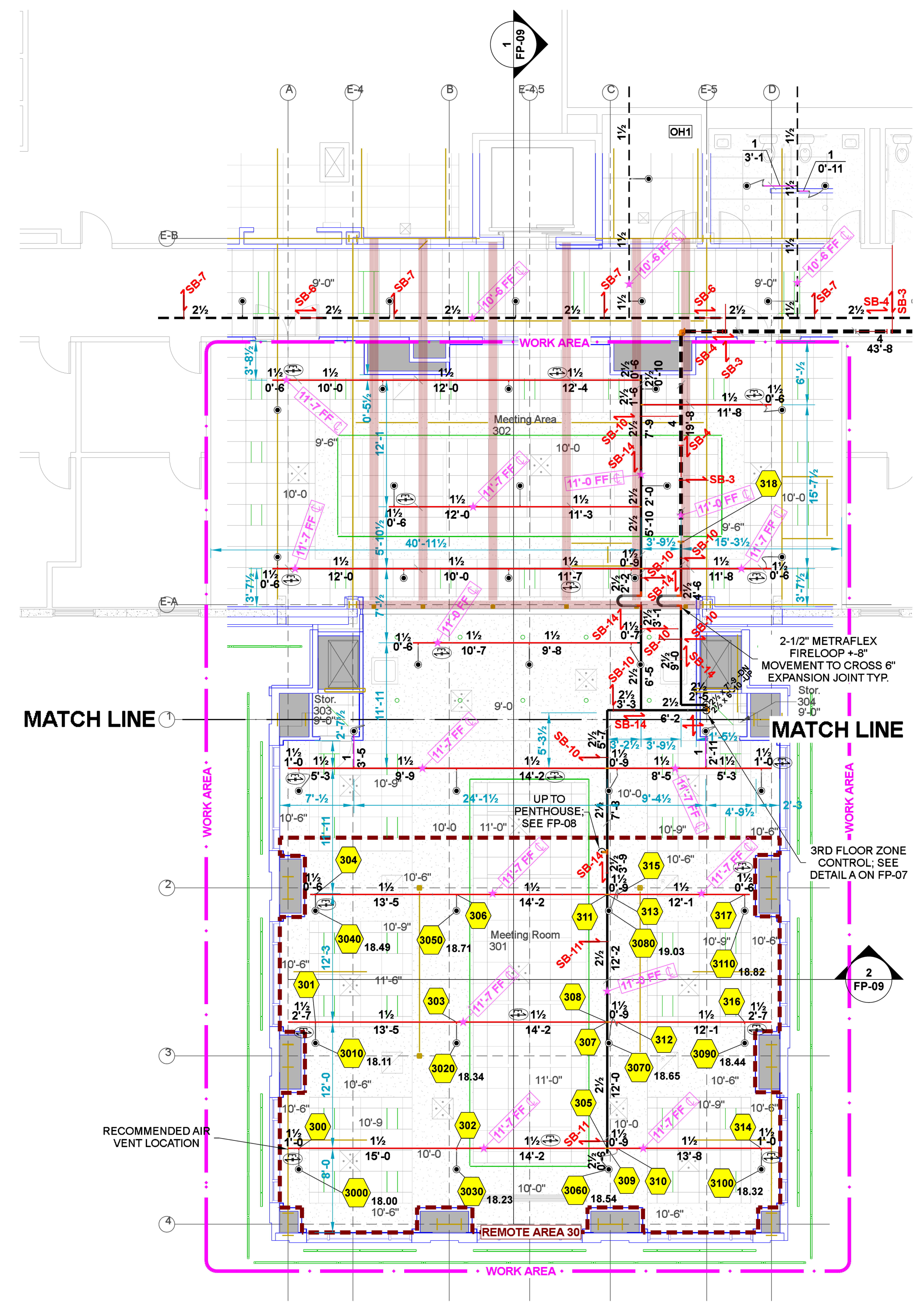
- LATERAL BRACE: SB-#
- LONGITUDINAL BRACE: SB-#
- BRANCH LINE RESTRAINT: SB-#

SEISMIC BRANCH LINE RESTRAINT
(C=0.98)

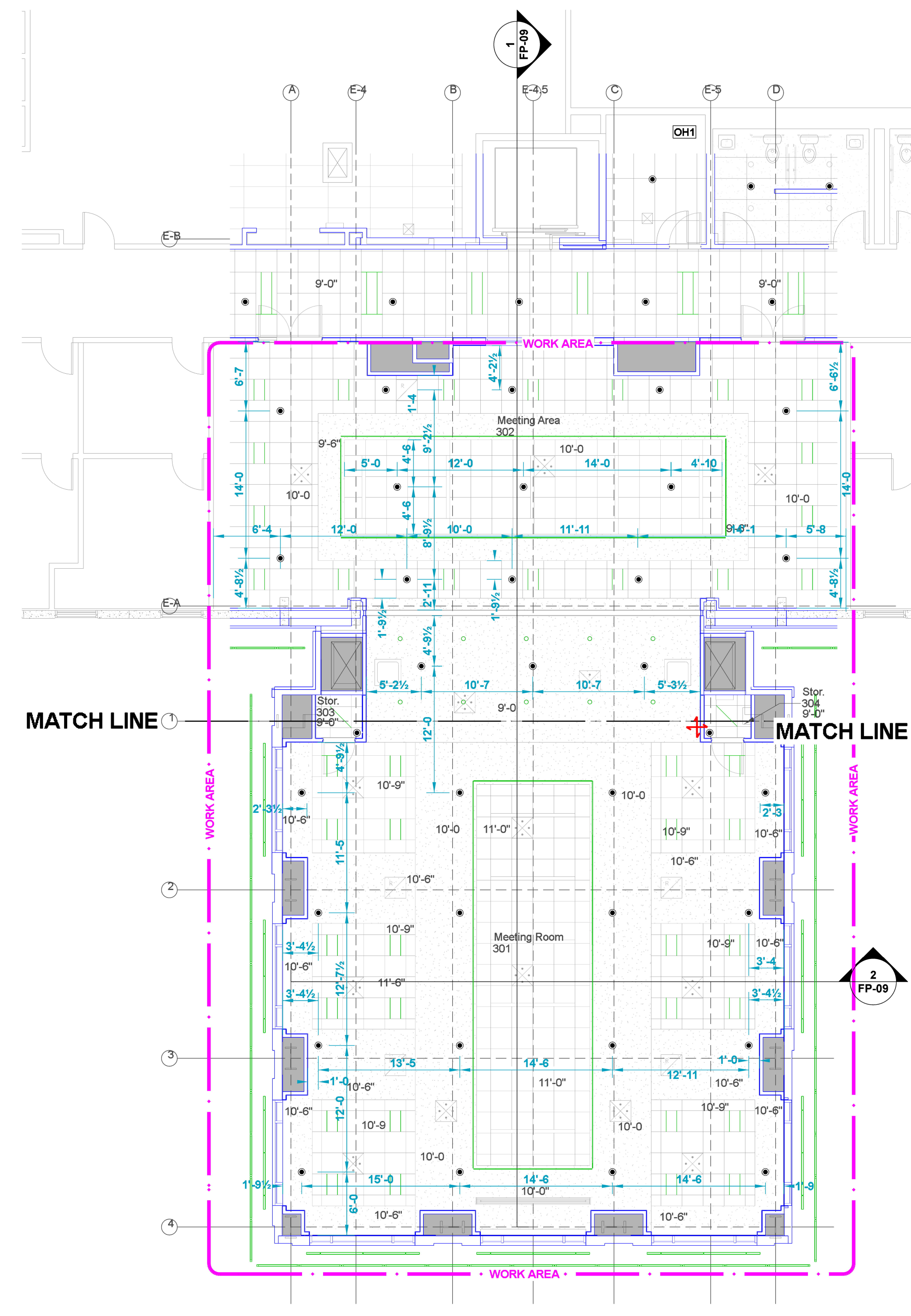
- 1" PIPE = 26'-0" MAX SPACING
- 1-1/4" PIPE = 27'-0" MAX SPACING
- 1-1/2" PIPE = 29'-0" MAX SPACING
- 2" PIPE = 31'-0" MAX SPACING

CALC PLACARD

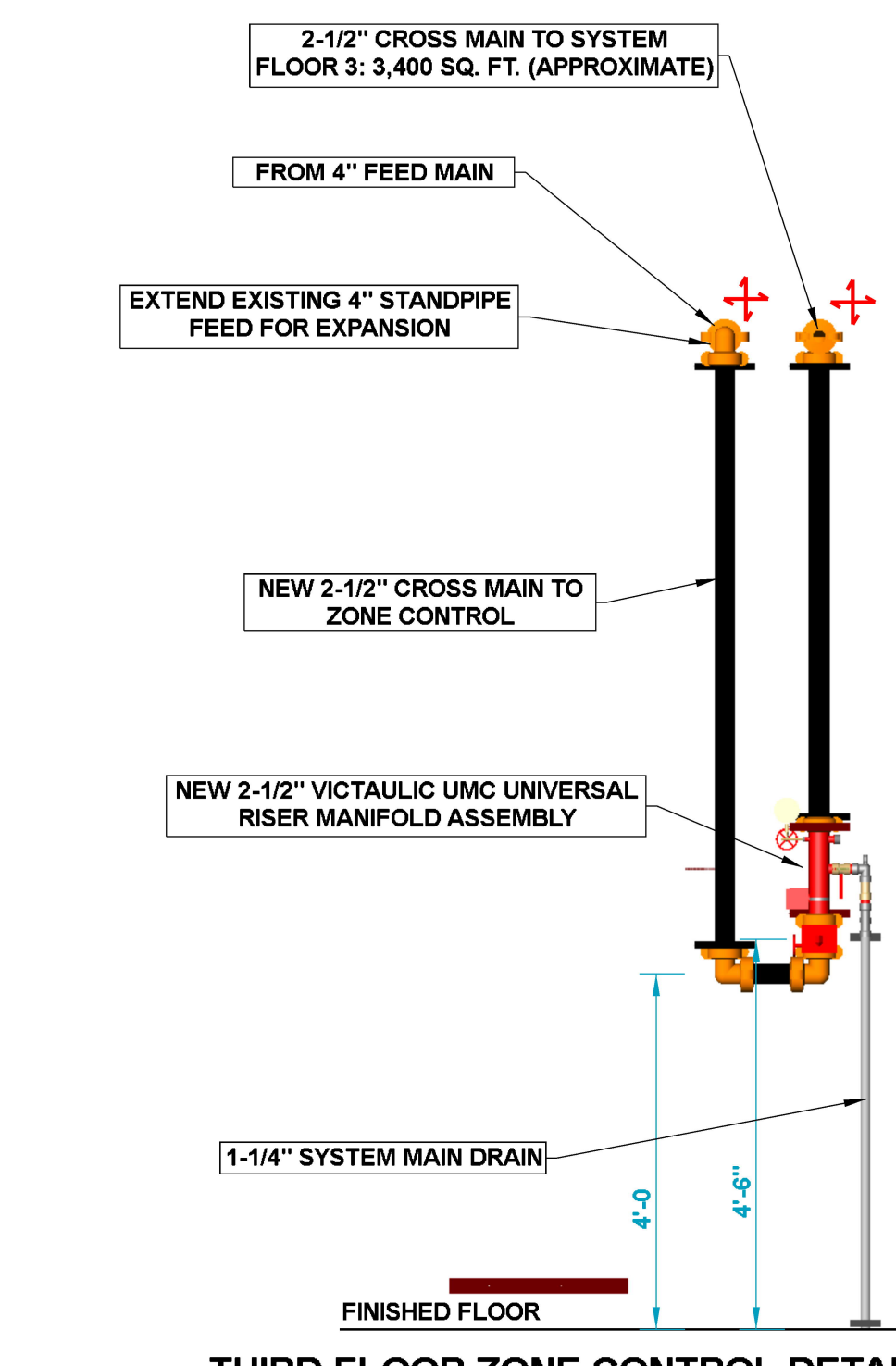
MEETING ROOM 301	
Remote Area 30	
OCCUPANCY CLASSIFICATION	Light Hazard
DENSITY (gpm/ft ²)	0.10 for 1500ft ² (Actual 1686ft ²)
TOTAL HOSE STREAMS	100.00
TOTAL HEADS FLOWING	12
K-FACTOR	5.6
TOTAL WATER REQUIRED	321.68
TOTAL PRESSURE REQUIRED	70.928
BASE OF RISER (gpm)	221.68
BASE OF RISER (psi)	67.089
SAFETY MARGIN (psi)	116.880 (19.0%)
CALCULATED USING THE DENVER AREA METHOD PER NFPA 13	
11.2.2.2	



THIRD FLOOR FIRE SPRINKLER PLAN
SCALE: 1/8" = 1'-0"



THIRD FLOOR REFLECTED CEILING PLAN
SCALE: 1/8" = 1'-0"



THIRD FLOOR ZONE CONTROL DETAIL
N.T.S.

Sprinkler Legend - Third Floor

Symbol	Manufacturer	SIN	Model	Quantity	K-Factor	Type	Finish	Temperature	Escutcheon	MAX. Coverage	Notes
●	Tyco	TR3531	Royal Flush II	34	5.6	Concealed Pendant	1/2" Quick Brass	200°F	White Plate	15' x 15'	N/A
Total = 34											

REVISIONS

REV	DATE	DESCRIPTION

FIRE SPRINKLER PLANS

3RD FLOOR SYSTEM PLAN

LCB W. Security and Expansion
Legislative Council Bureau
401 South Carson St.
Carson City NV 89701

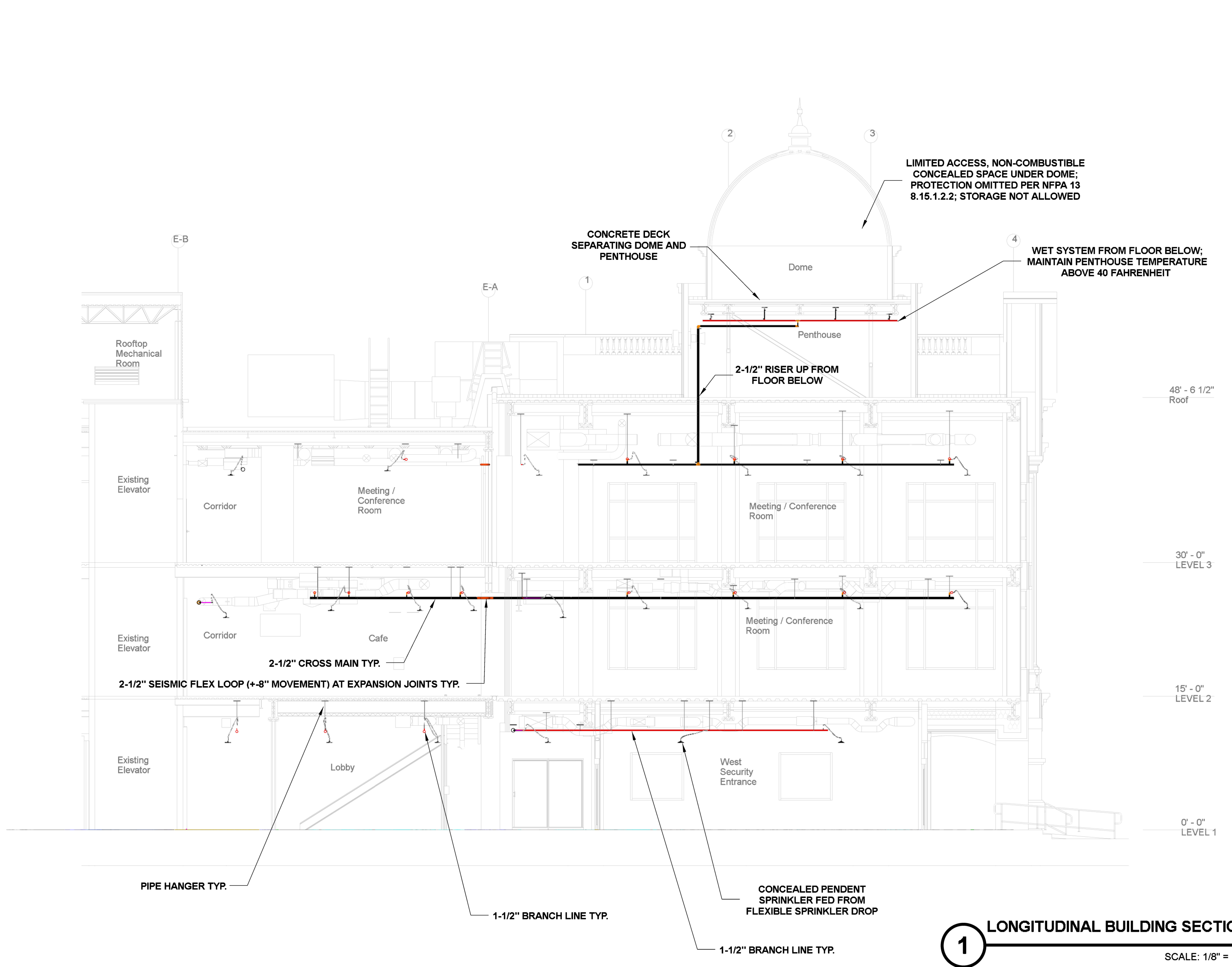
Project: LCB W. Security and Expansion
Sheet Title: 3RD FLOOR SYSTEM PLAN

DRAWN BY: WWW
CHECKED BY: ADK
DATE: 6-24-24
PROJECT NO.: #xxx

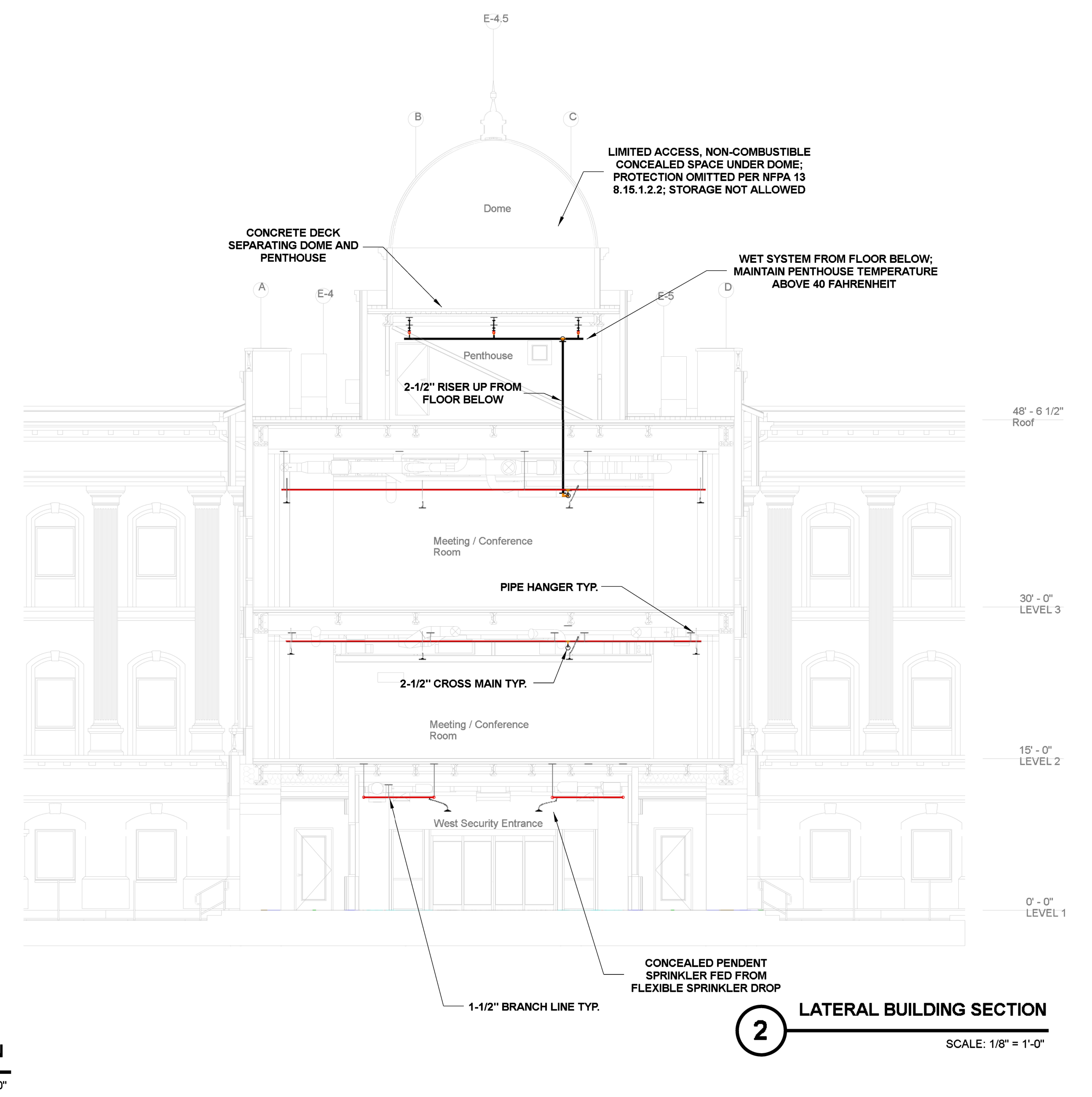
Scale: 1/8" = 1'-0"

Sheet No.: **FP-07**

PRINTED ON 06/24/24 AT 14:04:29 LCB_Open_GI_AS2023.sxd



1 LONGITUDINAL BUILDING SECTION
SCALE: 1/8" = 1'-0"



2 LATERAL BUILDING SECTION
SCALE: 1/8" = 1'-0"

REV.	DATE	DESCRIPTION

FIRE SPRINKLER PLANS

BUILDING SECTIONS

Project
LCB W. Security and Expansion
Legislative Council Bureau
401 South Carson St.
Carson City NV 89701

DRAWN BY:	WWW
CHECKED BY:	ADK
DATE:	6-24-24
PROJECT NO.:	#xxx

0 2 4 6 8 10 12
SCALE: 1/8" = 1'-0"

Sheet No:
FP-09

PRINTED ON 06/24/24 AT 14:04:48 LCB_Open_GI_AS2023.sxd