

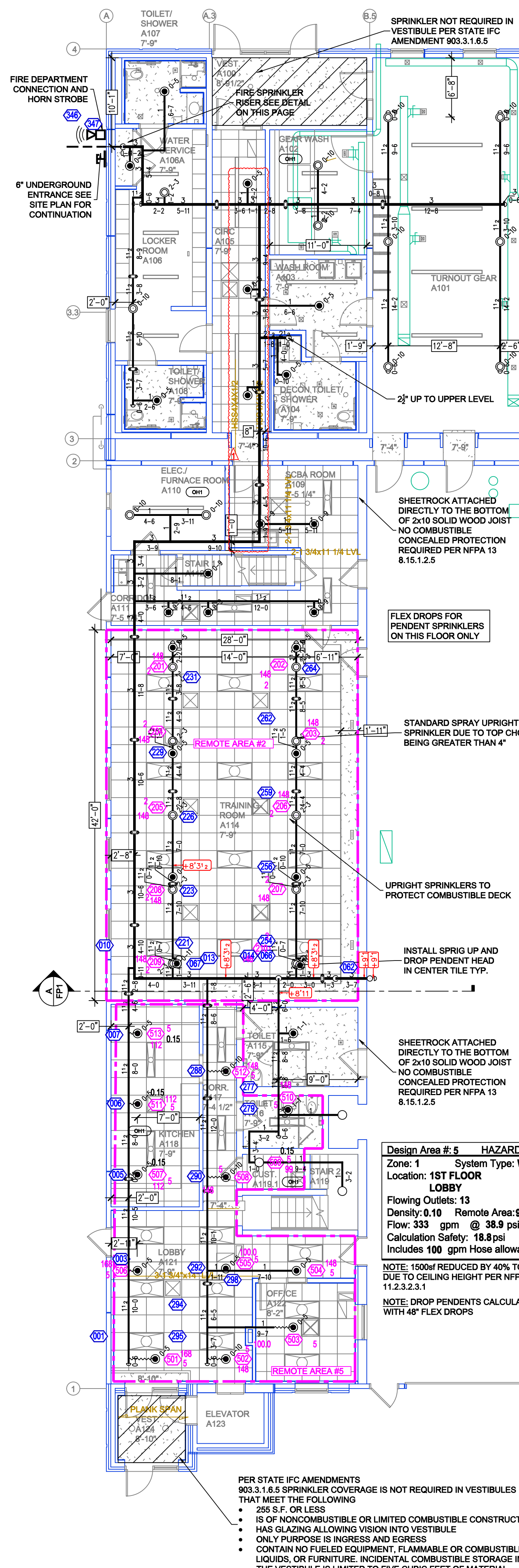
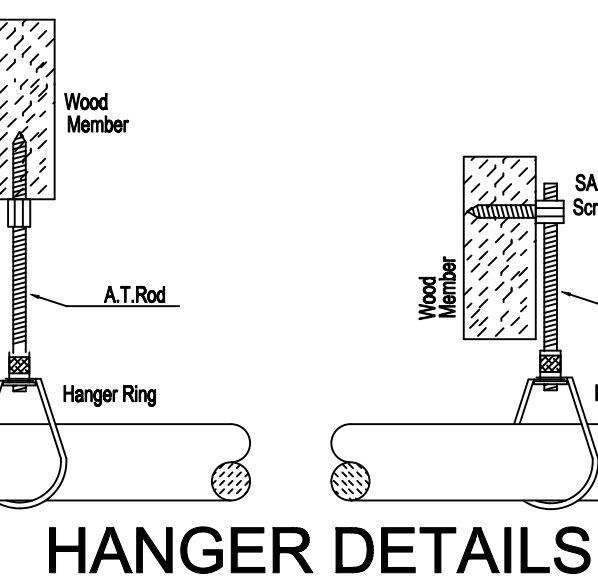
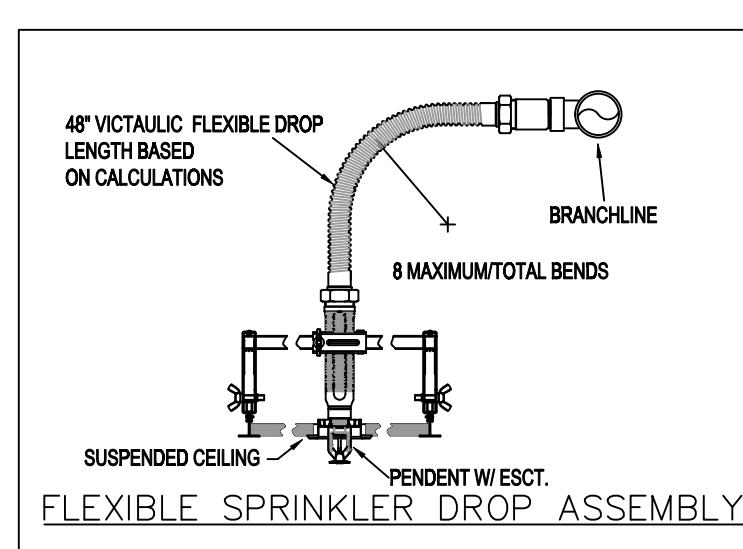
SYM	QTY	POSITION	FINISH	TRAMP	K	NPT	BN	MFG	MODEL#	DESCRIPTION	MAX SPACING
27	PEND	CHROME	155	5.80	12"	V2706	VICTAULIC	V27	N/A	SEMI-RECESS	12" OR 130 S.F. OH
104	UPR	BRASS	200	5.80	12"	V2704	VICTAULIC	V27	N/A	SEMI-RECESS	12" OR 130 S.F. OH
15	PEND	WHITE	200	5.80	12"	V5906	VICTAULIC	FL-QR	SEMI-RECESS	12" OR 130 S.F. OH	
22	UPR	BRASS	200	5.80	12"	V2704	VICTAULIC	V27	N/A	SEMI-RECESS	12" OR 130 S.F. OH
7	SIDE	BRASS	200	5.80	12"	V2710	VICTAULIC	V27	N/A	14" LH OR 10" OH	
4	SIDE	CHROME	200	5.80	12"	V2710	VICTAULIC	V27	SEMI-RECESS	14" LH OR 10" OH	
1	SIDE	CHROME	155	5.80	12"	V5913	VICTAULIC	FL-BLH	SEMI-RECESS	12X12 LH	
181	TOTAL										

SPRINKLER HEAD LEGEND

NFPA 13 STEEL PIPE HANGER SPACING

(EXCEPT LIGHT WALL THRD PIPING)

NOMINAL SIZE INCHES	MAX SPACING FEET
1"	12'-0"
1-1/4"	12'-0"
1-1/2"	15'-0"
2"	15'-0"
2-1/2"	15'-0"
3"	15'-0"
4" LARGER	15'-0"



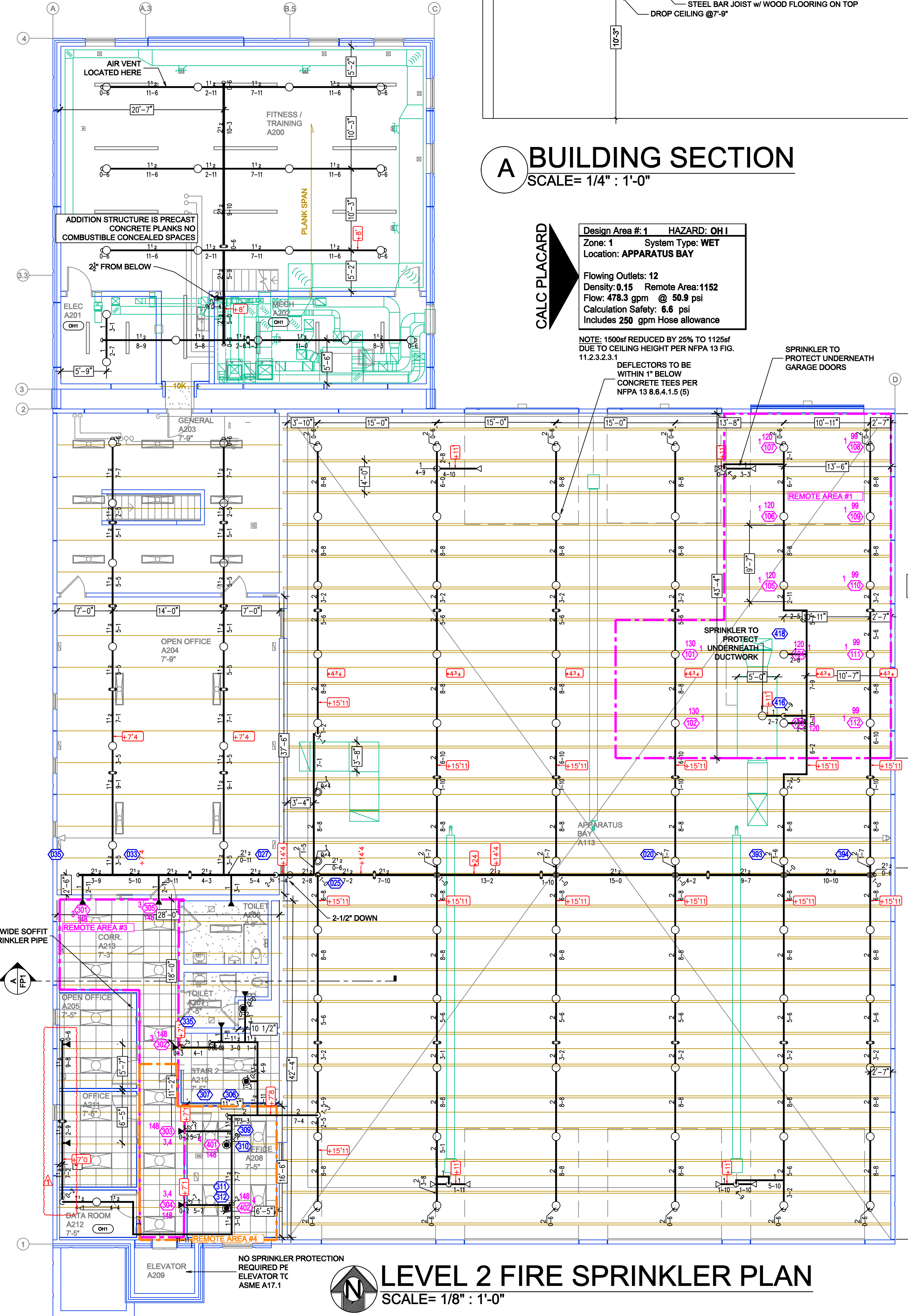
LEVEL 1 FIRE SPRINKLER PLAN

SCALE= 1/8" : 1'-0"

GENERAL NOTES

- SYSTEM INSTALLED PER NFPA-13 (2016 EDITION) AND STATE FIRE MARSHAL THAT MEET THE FOLLOWING:
 - 255 S.F. OR LESS
 - IS OF NONCOMBUSTIBLE OR LIMITED COMBUSTIBLE CONSTRUCTION
 - HAS GLAZING ALLOWING VISION INTO VESTIBULE
 - ONLY PURPOSE IS INGRESS AND EGRESS
 - CONTAIN NO FUELLED EQUIPMENT, FLAMMABLE OR COMBUSTIBLE LIQUIDS, OR FURNITURE. INCIDENTAL COMBUSTIBLE STORAGE IN THE VESTIBULE IS LIMITED TO FIVE CUBIC FEET OF MATERIAL.
- PER STATE IFC AMENDMENTS 903.3.1.6.5 SPRINKLER COVERAGE IS NOT REQUIRED IN VESTIBULES
- ALL EQUIPMENT FOR THIS SYSTEM SHALL BE U.L. LISTED
- MINIMUM PIPE SIZE SHALL BE 1" NOMINAL PIPE
- ALL SCH-40 LIGHTWALL PIPING HAS WELDED OUTLETS & GROOVED SHORT RADIUS FITTINGS
- ALL WELDING PER NFPA-54(2)
- NO INSTALLATION OR FABRICATION TO BEGIN WITHOUT APPROVED SHOP DRAWINGS
- ALL WELD LOCATIONS ARE TO BE FIELD MEASURED PRIOR TO FABRICATION AND INSTALLATION BY SPRINKLER CONTRACTOR
- ALL DIMENSIONS SHOWN ARE CENTER TO CENTER
- HIGH TEMPERATURE HEADS ARE TO BE FIELD LOCATED WHERE REQUIRED
- PROVIDE ON SPARE HEAD CABINET W/ HEADS & 1 HEAD WRENCH
- HANGERS ARE TO BE U.L. LISTED AND I.M. APPROVED
- ELECTRICAL WIRING, ALARM, DETECTION AND SUPERVISORY BY OWNER
- OWNER'S RESPONSIBILITY TO PROVIDE ADEQUATE HEATING TO PREVENT WET SYSTEM PIPING FROM FREEZING.

NO	REVISIONS	DATE	APPROVAL STAMPS
1	RELOCATED MAIN ON LEVEL 1 AND BRANCHLINE ON LEVEL TWO, UPDATED BACKFLOW TO OS&Y VALVES	10/21/2024	



LEVEL 2 FIRE SPRINKLER PLAN

SCALE= 1/8" : 1'-0"

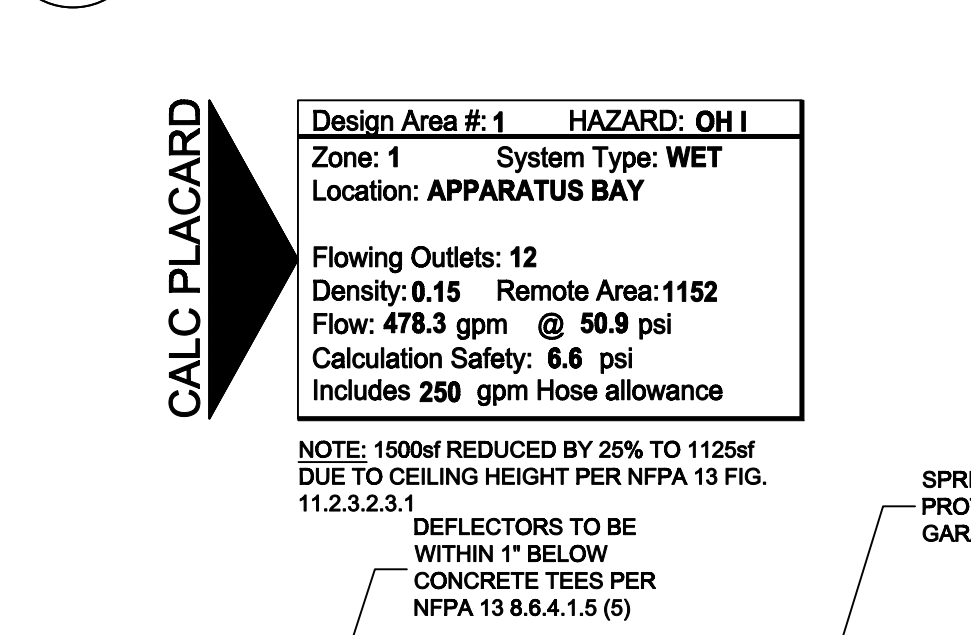
GENERAL NOTES

- SYSTEM INSTALLED PER NFPA-13 (2016 EDITION) AND STATE FIRE MARSHAL THAT MEET THE FOLLOWING:
 - 255 S.F. OR LESS
 - IS OF NONCOMBUSTIBLE OR LIMITED COMBUSTIBLE CONSTRUCTION
 - HAS GLAZING ALLOWING VISION INTO VESTIBULE
 - ONLY PURPOSE IS INGRESS AND EGRESS
 - CONTAIN NO FUELLED EQUIPMENT, FLAMMABLE OR COMBUSTIBLE LIQUIDS, OR FURNITURE. INCIDENTAL COMBUSTIBLE STORAGE IN THE VESTIBULE IS LIMITED TO FIVE CUBIC FEET OF MATERIAL.
- PER STATE IFC AMENDMENTS 903.3.1.6.5 SPRINKLER COVERAGE IS NOT REQUIRED IN VESTIBULES
- ALL EQUIPMENT FOR THIS SYSTEM SHALL BE U.L. LISTED
- MINIMUM PIPE SIZE SHALL BE 1" NOMINAL PIPE
- ALL SCH-40 LIGHTWALL PIPING HAS WELDED OUTLETS & GROOVED SHORT RADIUS FITTINGS
- ALL WELDING PER NFPA-54(2)
- NO INSTALLATION OR FABRICATION TO BEGIN WITHOUT APPROVED SHOP DRAWINGS
- ALL WELD LOCATIONS ARE TO BE FIELD MEASURED PRIOR TO FABRICATION AND INSTALLATION BY SPRINKLER CONTRACTOR
- ALL DIMENSIONS SHOWN ARE CENTER TO CENTER
- HIGH TEMPERATURE HEADS ARE TO BE FIELD LOCATED WHERE REQUIRED
- PROVIDE ON SPARE HEAD CABINET W/ HEADS & 1 HEAD WRENCH
- HANGERS ARE TO BE U.L. LISTED AND I.M. APPROVED
- ELECTRICAL WIRING, ALARM, DETECTION AND SUPERVISORY BY OWNER
- OWNER'S RESPONSIBILITY TO PROVIDE ADEQUATE HEATING TO PREVENT WET SYSTEM PIPING FROM FREEZING.

NO	REVISIONS	DATE	APPROVAL STAMPS
1	RELOCATED MAIN ON LEVEL 1 AND BRANCHLINE ON LEVEL TWO, UPDATED BACKFLOW TO OS&Y VALVES	10/21/2024	

A BUILDING SECTION

SCALE= 1/4" : 1'-0"

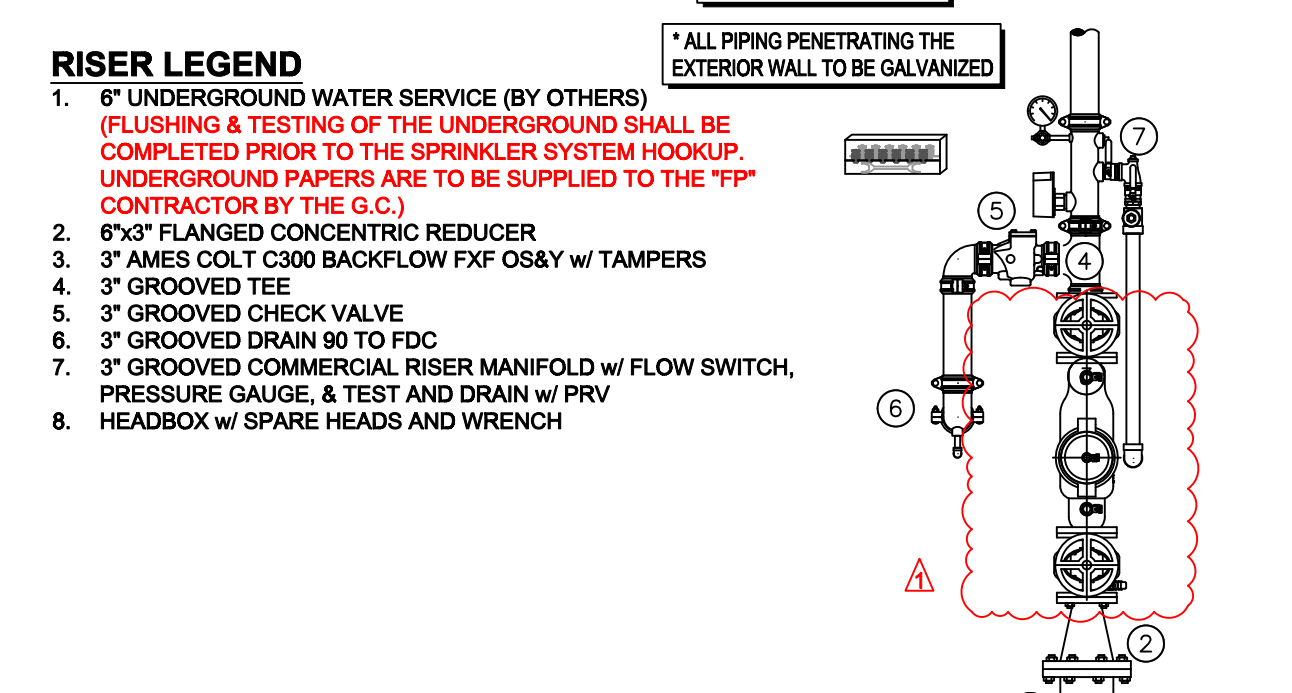


GENERAL NOTES

- INTERNATIONAL BUILDING CODE (2018)
 - OCCUPANCY TYPE A-3, B-2
 - TYPE OF CONSTRUCTION V-B
 - SPRINKLERED AREAS (APPROXIMATE - SEE ARCHITECTURAL PLANS FOR ACTUAL)
 - MAIN LEVEL = 13,652 S.F.
 - UPPER FLOOR = 5,475 S.F.
 - TOTAL = 19,127 S.F.
 - INSTALLATION STANDARDS: SPRINKLER SYSTEM DESIGNED AND INSTALLED PER NFPA-13, (2016)
- SPRINKLER PIPE TYPES:
 - WET
- DESIGN CRITERIA
 - CORRIDORS, OFFICES RESTROOMS AND SIMILAR TO BE LIGHT HAZARD AREAS DESIGNED TO DELIVER 0.10 GPM/S.F. OVER THE MOST DEMANDING 1500 S.F.
 - ANTICOR GLOSET, MECHANICAL ROOMS, APPARATUS BAY AND SIMILAR TO BE ORDINARY HAZARD GROUP 1
 - STORAGE ROOMS TO BE ORDINARY HAZARD GROUP 2 AREAS
 - REMOTE AREA REDUCTIONS HAVE BEEN TAKEN WHERE APPLICABLE PER NFPA 13 SEC. 11.2.3.2.3
- NOTES:
 - ALL MATERIAL TO BE NEW AND MEET U.L. STANDARDS
 - HANGERS TO BE INSTALLED IN ACCORDANCE WITH NFPA 13 (2016) - SEE PLAN FOR HANGING REQ.
- SYMBOLS USED ON DRAWINGS:
 - PIPE ELEVATION A.F.F.
 - PIPE ELEVATION BELOW B.O.D.
 - ROOM HAZARD CALCULATION (ALL ROOMS ARE CONSIDERED LIGHT HAZARD UNLESS NOTED)
 - HYDRAULIC CALCULATION JUNCTION POINT
 - CEILING HEIGHT
- SCOPE OF WORK:
 - CORRIDORS, OFFICES RESTROOMS AND SIMILAR TO BE LIGHT HAZARD AREAS DESIGNED TO DELIVER 0.10 GPM/S.F. OVER THE MOST DEMANDING 1500 S.F.
 - REMOTE AREA REDUCTIONS HAVE BEEN TAKEN WHERE APPLICABLE PER NFPA 13 (2016)

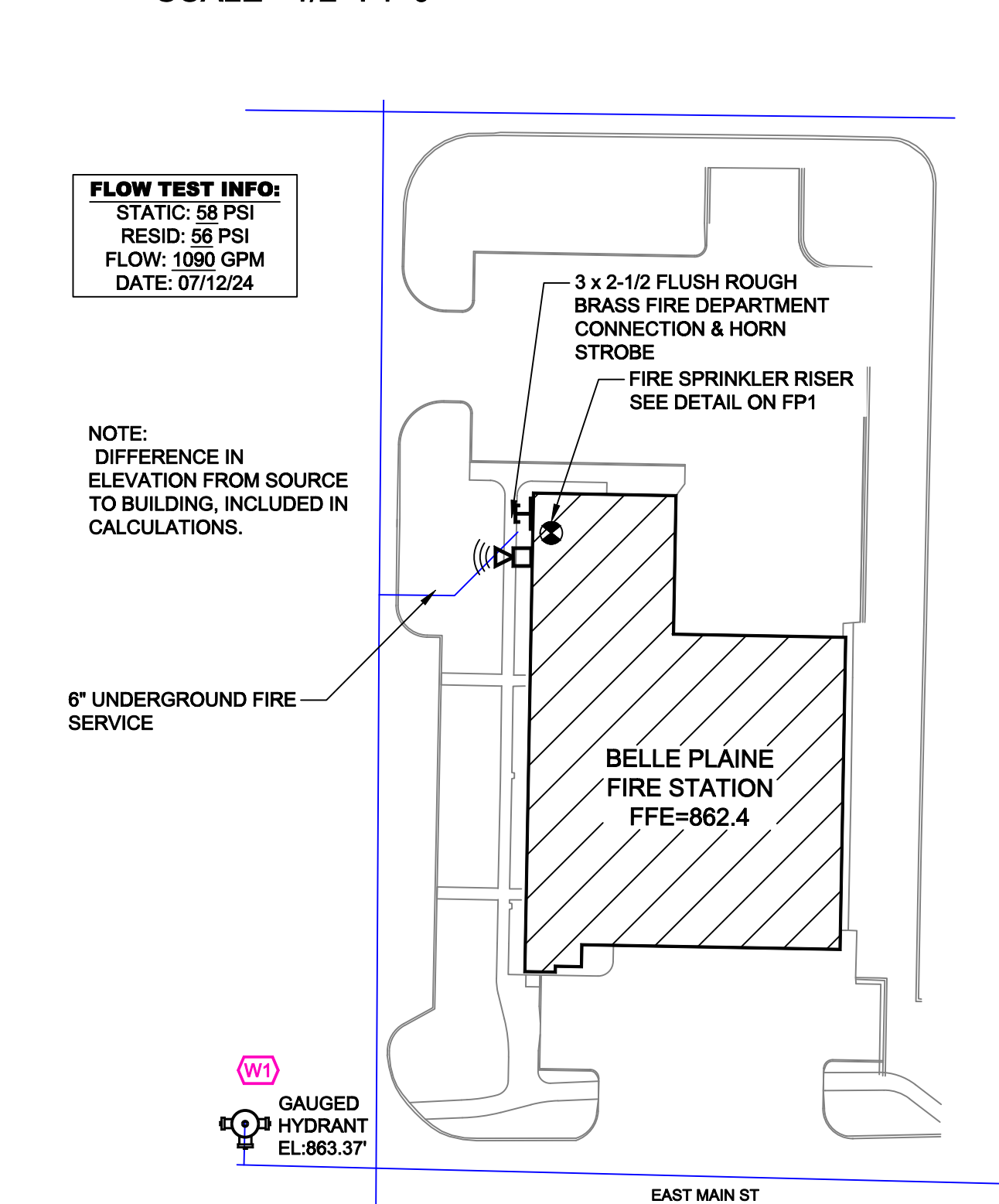
GENERAL NOTES

- INTERNATIONAL BUILDING CODE (2018)
 - OCCUPANCY TYPE A-3, B-2
 - TYPE OF CONSTRUCTION V-B
 - SPRINKLERED AREAS (APPROXIMATE - SEE ARCHITECTURAL PLANS FOR ACTUAL)
 - MAIN LEVEL = 13,652 S.F.
 - UPPER FLOOR = 5,475 S.F.
 - TOTAL = 19,127 S.F.
 - INSTALLATION STANDARDS: SPRINKLER SYSTEM DESIGNED AND INSTALLED PER NFPA-13, (2016)
- SPRINKLER PIPE TYPES:
 - WET
- DESIGN CRITERIA
 - CORRIDORS, OFFICES RESTROOMS AND SIMILAR TO BE LIGHT HAZARD AREAS DESIGNED TO DELIVER 0.10 GPM/S.F. OVER THE MOST DEMANDING 1500 S.F.
 - ANTICOR GLOSET, MECHANICAL ROOMS, APPARATUS BAY AND SIMILAR TO BE ORDINARY HAZARD GROUP 1
 - STORAGE ROOMS TO BE ORDINARY HAZARD GROUP 2 AREAS
 - REMOTE AREA REDUCTIONS HAVE BEEN TAKEN WHERE APPLICABLE PER NFPA 13 SEC. 11.2.3.2.3
- NOTES:
 - ALL MATERIAL TO BE NEW AND MEET U.L. STANDARDS
 - HANGERS TO BE INSTALLED IN ACCORDANCE WITH NFPA 13 (2016) - SEE PLAN FOR HANGING REQ.
- SYMBOLS USED ON DRAWINGS:
 - PIPE ELEVATION A.F.F.
 - PIPE ELEVATION BELOW B.O.D.
 - ROOM HAZARD CALCULATION (ALL ROOMS ARE CONSIDERED LIGHT HAZARD UNLESS NOTED)
 - HYDRAULIC CALCULATION JUNCTION POINT
 - CEILING HEIGHT
- SCOPE OF WORK:
 - CORRIDORS, OFFICES RESTROOMS AND SIMILAR TO BE LIGHT HAZARD AREAS DESIGNED TO DELIVER 0.10 GPM/S.F. OVER THE MOST DEMANDING 1500 S.F.
 - REMOTE AREA REDUCTIONS HAVE BEEN TAKEN WHERE APPLICABLE PER NFPA 13 (2016)



RISER DETAIL

SCALE= 1/2" : 1'-0"



SITE PLAN

SCALE: 1" = 50'-0"

FLOW TEST INFO:

STATIC: 58 PSI
RESID: 55 PSI
FLOW: 1090 GPM
DATE: 07/12/24

NOTE: DIFFERENCE IN ELEVATION FROM SOURCE TO BUILDING, INCLUDED IN CALCULATIONS.

8" UNDERGROUND FIRE SERVICE

3 x 2-1/2 FLUSH ROUGH BRASS FIRE DEPARTMENT CONNECTION & HORN STROBE

FIRE SPRINKLER RISER SEE DETAIL ON FP1

BELLE PLAINE FIRE STATION FFE=862.4

EAST MAIN ST

GAUGED HYDRANT EL.863.37

	Drawing Title: FIRE PROTECTION PLAN	Contract No.: C24-94
	Drawing Date: 9/27/2024	Scale: 1/8" = 1'-0"
Drawing By: AM	Approval By: STATE FIRE MARSHAL DIV.	Sheet No.: FP 1 of 1