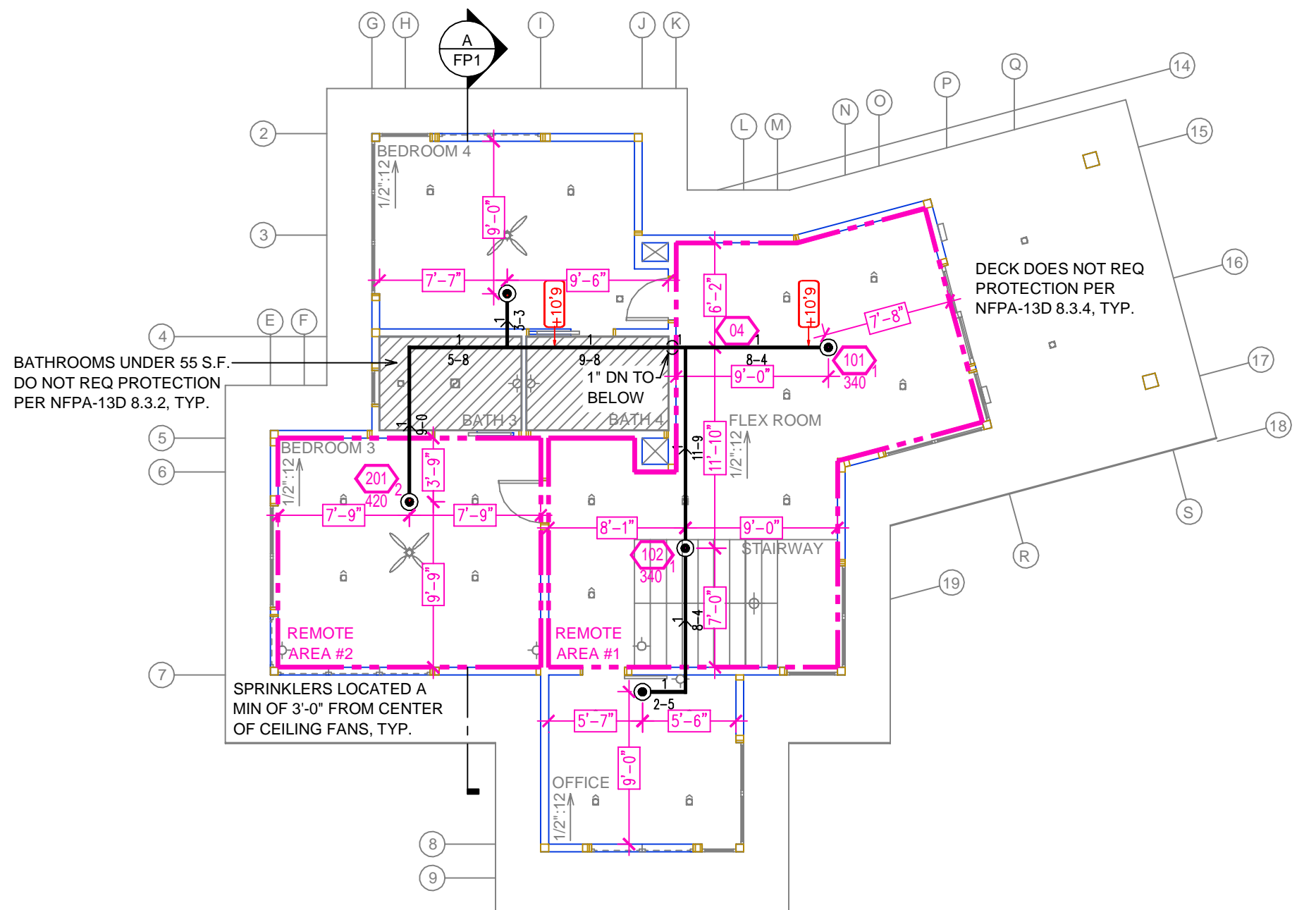


**MAIN FLOOR FIRE SPRINKLER PLAN**  
SCALE: 1/8" = 1'-0"

Remote Area 3	Remote Area 4
<p><b>Hydraulically Calculated System</b></p> <p>This system as shown on Fire Protection Plan company print no. FPI dated 9/13/2024 for GARCIA RESIDENCE at GREAT ROOM contract no. is designed to discharge at a rate of 0.05 gpm (L/min) per sq ft (m<sup>2</sup>) of floor area over a maximum area of NFPA 13D - 2 SPRINKLERS sq ft (m<sup>2</sup>) when supplied with water at the rate of 39.2 gpm (L/min) at 72.1 psi (bars) at the base of the riser. Hose stream allowance of 5 gpm (L/min) is included in the above.</p> <p>Occupancy classification: 130 LIGHT HAZARD Commodity classification: N/A Maximum storage height: N/A Safety factor: 19.7</p>	<p><b>Hydraulically Calculated System</b></p> <p>This system as shown on Fire Protection Plan company print no. FPI dated 9/13/2024 for GARCIA RESIDENCE at GUEST SUITE contract no. is designed to discharge at a rate of 0.05 gpm (L/min) per sq ft (m<sup>2</sup>) of floor area over a maximum area of NFPA 13D - 1 SPRINKLER sq ft (m<sup>2</sup>) when supplied with water at the rate of 26.0 gpm (L/min) at 62.8 psi (bars) at the base of the riser. Hose stream allowance of 5 gpm (L/min) is included in the above.</p> <p>Occupancy classification: 130 LIGHT HAZARD Commodity classification: N/A Maximum storage height: N/A Safety factor: 36.0</p>

**PROJECT SUMMARY:**  
 PROJECT NAME: GARCIA RESIDENCE  
 PROJECT ADDRESS: 11720 GHIRARD RD, TRUCKEE CA 99601-17  
 APN: 19-890-17  
 PROJECT TYPE:  NEW  T.I.  
 TYPE OF CONSTRUCTION: V  
 OCCUPANCY GROUP(S): R3  
 OCCUPIED LEVELS: 2  
 TOTAL SPRINKLERED AREA: 4528 SQ. FT.  
 NFPA CODE REQUIREMENT:  NFPA 13  NFPA 13R  NFPA 13D  
 NUMBER OF SYSTEMS: 1  
 SYSTEM TYPE(S):  WET  ANTI-FREEZE  DRY  PREACTION  
 TOTAL SPRINKLERS: 33  
 SPECIAL NOTES: SEE FIRE SPRINKLER NOTES THIS SHEET



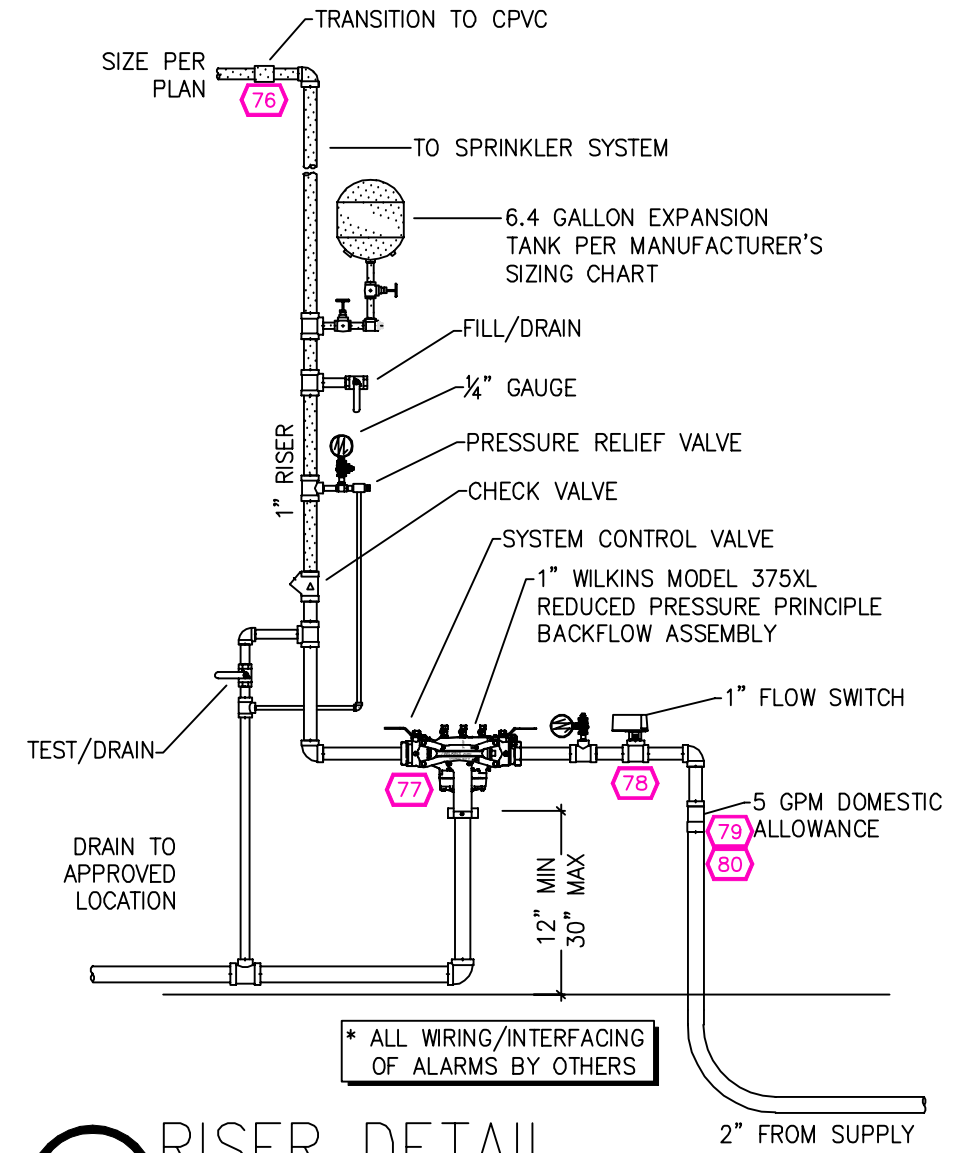
**UPPER FLOOR FIRE SPRINKLER PLAN**  
SCALE: 1/8" = 1'-0"

Remote Area 1	Remote Area 2
<p><b>Hydraulically Calculated System</b></p> <p>This system as shown on Fire Protection Plan company print no. FPI dated 9/13/2024 for GARCIA RESIDENCE at FLEX ROOM contract no. is designed to discharge at a rate of 0.05 gpm (L/min) per sq ft (m<sup>2</sup>) of floor area over a maximum area of NFPA 13D - 2 SPRINKLERS sq ft (m<sup>2</sup>) when supplied with water at the rate of 39.4 gpm (L/min) at 63.8 psi (bars) at the base of the riser. Hose stream allowance of 5 gpm (L/min) is included in the above.</p> <p>Occupancy classification: 130 LIGHT HAZARD Commodity classification: N/A Maximum storage height: N/A Safety factor: 27.9</p>	<p><b>Hydraulically Calculated System</b></p> <p>This system as shown on Fire Protection Plan company print no. FPI dated 9/13/2024 for GARCIA RESIDENCE at BEDROOM 3 contract no. is designed to discharge at a rate of 0.05 gpm (L/min) per sq ft (m<sup>2</sup>) of floor area over a maximum area of NFPA 13D - 1 SPRINKLER sq ft (m<sup>2</sup>) when supplied with water at the rate of 26.0 gpm (L/min) at 60.9 psi (bars) at the base of the riser. Hose stream allowance of 5 gpm (L/min) is included in the above.</p> <p>Occupancy classification: 130 LIGHT HAZARD Commodity classification: N/A Maximum storage height: N/A Safety factor: 38.1</p>

**SUBMITTAL**

NO SPRINKLERS REQUIRED IN:  
 BATHROOMS 55 SQ.FT. OR LESS IN AREA PER NFPA 13D SECTION 8.6.2  
 CLOSETS 24 SQ.FT. OR LESS IN AREA PER NFPA 13D SECTION 8.6.3

PROJECT SQUARE FOOTAGES  
 MAIN LEVEL = 3490 S.F.  
 UPPER LEVEL = 1038 S.F.



**1 RISER DETAIL**  
SCALE: 1/2" = 1'-0"

Pipe	Nominal Pipe Size (in.)								
	3/4	1	1 1/4	1 1/2	2	2 1/2	3	4	
Steel pipe except threaded lightwall	N/A	12-0	12-0	15-0	15-0	15-0	15-0	15-0	15-0
Threaded lightwall steel pipe	N/A	12-0	12-0	15-0	15-0	15-0	N/A	N/A	N/A
Copper tube	8-0	8-0	10-0	10-0	12-0	12-0	12-0	15-0	15-0
CPVC	5-6	6-0	6-6	7-0	8-0	9-0	10-0	N/A	N/A

**SPRINKLER SPACING**

- A SINGLE PENDENT SPRINKLER MAY BE SPACED AT A MAXIMUM OF 20'x20' (400 SQ. FT.) OR UP TO 10' OFF A WALL (MINIMUM 8'-0" BETWEEN SPRINKLERS)
- TWO OR MORE HEADS IN A COMPARTMENT SHALL BE SPACED AT A MAXIMUM OF 18'x18' (324 SQ. FT.) OR UP TO 9' OFF A WALL UNO. (MINIMUM 8'-0" BETWEEN SPRINKLERS)
- SPRINKLERS SHALL BE MEASURED AT PERPENDICULAR ANGLES TO WALLS AND ALONG THE SLOPES OF CEILINGS.

THIS FIRE SPRINKLER SYSTEM UTILIZES THE NOBLE COMPANY FIREFIGHTER ELIMINATOR ANTI-FREEZE SOLUTION

HEAT SOURCE:	SPRINKLER HEAT ZONES:	
	ORDINARY TEMP. SPRINKLER	INTERMEDIATE TEMP. SPRINKLER
SIDE OF OPEN OR RECESSED FIRE PLACE	36"	12"
FRONT OF RECESSED FIRE PLACE	60"	36"
COAL OR WOOD BURNING STOVE	42"	12"
RANGE/OVEN, HOT AIR FLUES & UNINSULATED HEAT DUCT	18"	9"
UNINSULATED HOT WATER PIPES & 250-499 WATT LIGHTS	12"	6"
SIDE OF CEILING OR WALL MOUNTED HOT AIR DIFFUSERS	24"	12"
FRONT OF WALL MOUNTED HOT AIR DIFFUSERS	36"	18"
HOT WATER HEATER, FURNACE, LIGHT FIXTURE 0-250 WATT	6"	3"

NO.	DATE	REVISIONS	DRAWN	CHECKED

GENERAL CONTRACTOR: AUTHORITY HAVING JURISDICTION:  
 ADDRESS: 10183 TRUCKEE AIRPORT RD ADDRESS: 10183 TRUCKEE AIRPORT RD  
 CITY: TRUCKEE, CA 96161 CITY: TRUCKEE, CA 96161  
 PHONE: 530-582-7820 PHONE: 530-582-7820  
 CONTACT: CONTACT:

ARCHITECT: FIELD INSPECTIONS:  
 ADDRESS: 1.  
 CITY: 2.  
 PHONE: 3.  
 4.

**FIRE SPRINKLER NOTES:**

- THE PROPOSED FIRE SPRINKLER SYSTEM IS AN ANTI-FREEZE SYSTEM AND SHALL BE DESIGNED AND INSTALLED IN ACCORDANCE WITH NFPA 13D 2019 PIPING UNLESS OTHERWISE NOTED.
- THIS SPRINKLER SYSTEM IS HYDRAULICALLY CALCULATED IN ACCORDANCE WITH NFPA 13D TO PROVIDE 0.05 GPM PER SQ. FT. OVER THE MOST REMOTE AREA.
- THE NUMBER OF DESIGN SPRINKLERS SHALL INCLUDE ALL SPRINKLERS WITHIN A COMPARTMENT UP TO A MAXIMUM OF 2 SPRINKLERS.
- ALL SPRINKLER PIPING CONCEALED ABOVE CEILINGS SHALL BE CPVC UNLESS OTHERWISE NOTED.
- ALL DIMENSIONS SHOWN ARE CENTER TO CENTER U.O.N.
- ALL HANGERS SHALL BE INSTALLED IN ACCORDANCE WITH NFPA 13D AND/OR NFPA 13 REQUIREMENTS.
- HOLES THROUGH SOLID STRUCTURAL MEMBERS SHALL BE PERMITTED TO SERVE AS HANGERS FOR THE SUPPORT OF SYSTEM PIPING.
- ALL SYSTEM PIPING SHALL BE TESTED FOR LEAKAGE AT NORMAL SYSTEM OPERATING PRESSURE.
- THE OWNER SHALL BE RESPONSIBLE FOR MAINTAINING A MINIMUM TEMPERATURE OF 40° FAHRENHEIT TO PROTECT FROM FREEZING. THE SECTIONS OF THE SPRINKLER SYSTEM WHERE THERE IS NO ANTI-FREEZE IN THE PIPING (UPSTREAM OF THE RISER).

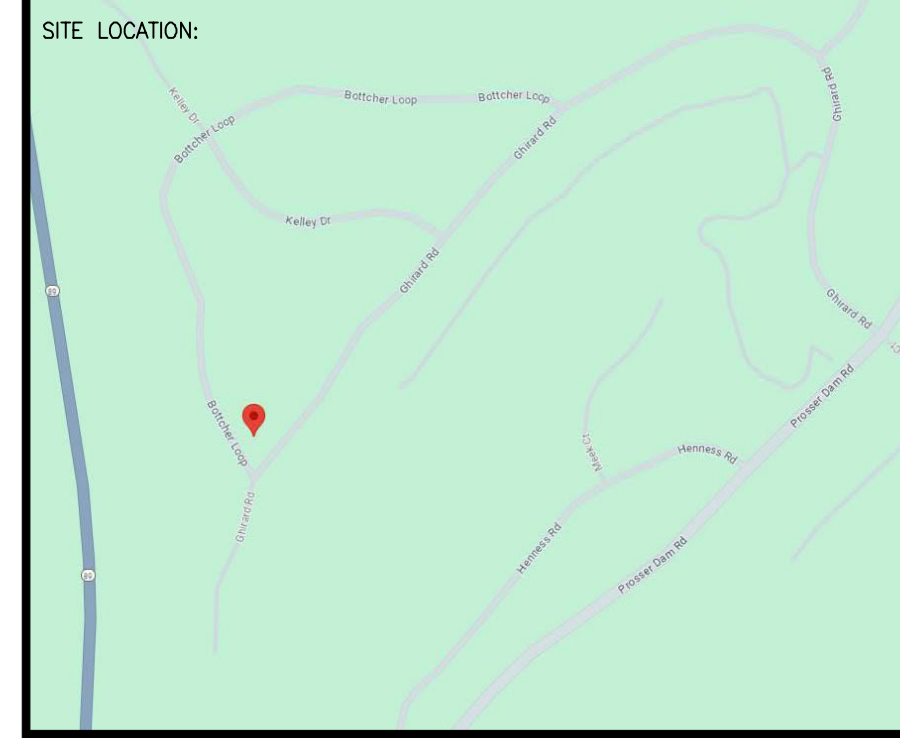
**SPRINKLER HEAD LEGEND**

SYM	QTY	PIPE	MFG.	MODEL#	NPT	K	TEMP	FINISH	S.I.N.
⊗	24	CONCEALED	SEN/J	RC-RES	1/2"	4.9	162	WHITE	SS4844
⊗	1	CONCEALED	SEN/J	RC-RES	1/2"	4.9	205	WHITE	SS4844
⊗	8	SEMI-RECESS	SEN/J	FR-RES	1/2"	4.9	205	WHITE	SS4451

33 TOTAL SPRINKLERS ON THIS SHEET

**FIRE SPRINKLER SYMBOLS**

⊗	AUTOMATIC SPRINKLER RISER	+13" ELEV. BELOW DECK OR TOS
⊕	EARTHQUAKE BRACING	+12'-9" ELEV. ABOVE FINISHED FLOOR
±	2-WAY & 4-WAY	CHANGE ELEVATION UP
±	PIPE HANGER & TYPE DESIGNATION	CHANGE ELEVATION DN
±	HYDRAULIC REF PT	INSPECTORS TEST
±	GRID OR THIRD CAP	AUX DRAIN
±	GRID COUPLING	REVISION NOTATION
⊕	TYPICAL POINT OF CONNECTION (POC)	LOCAL ALARM

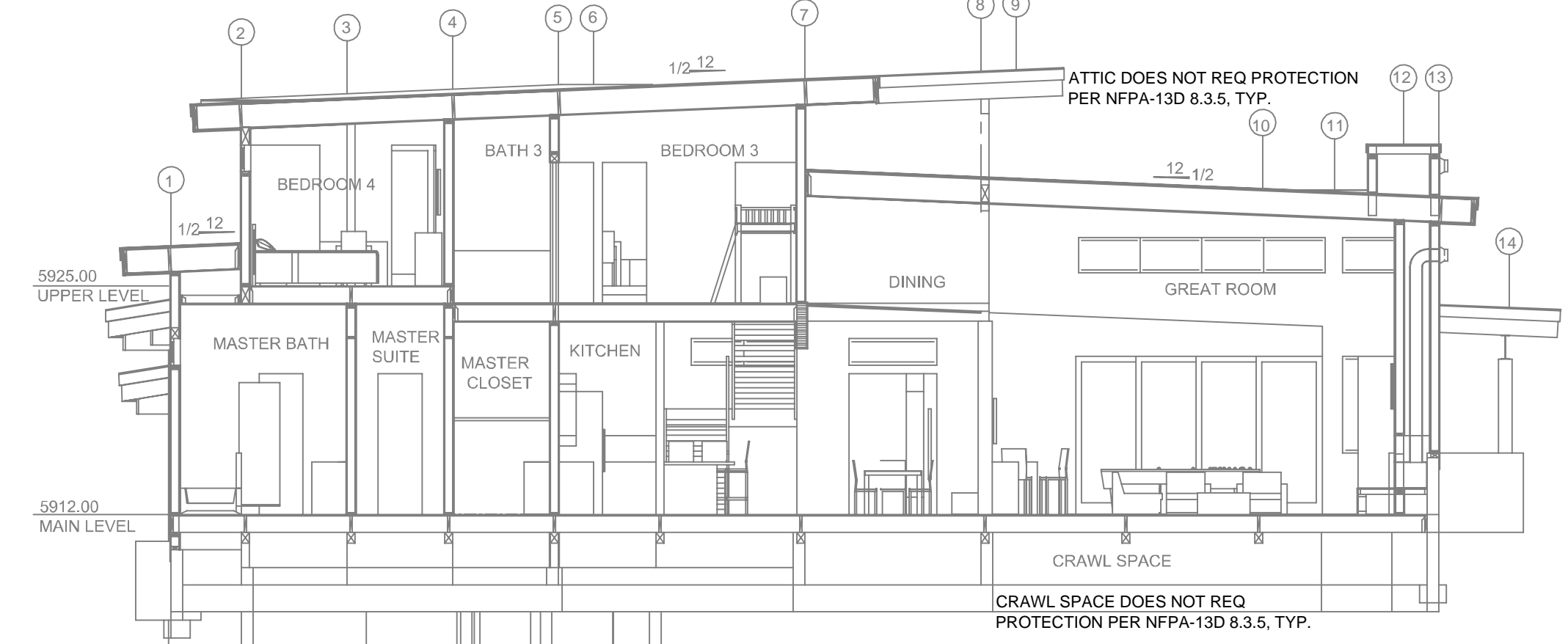


PROJECT NAME: FIRE SPRINKLER PLANS FOR  
**GARCIA RESIDENCE**  
 GRAY'S CROSSING, HOMESITE W110  
 11720 GHIRARD ROAD  
 TRUCKEE, CA

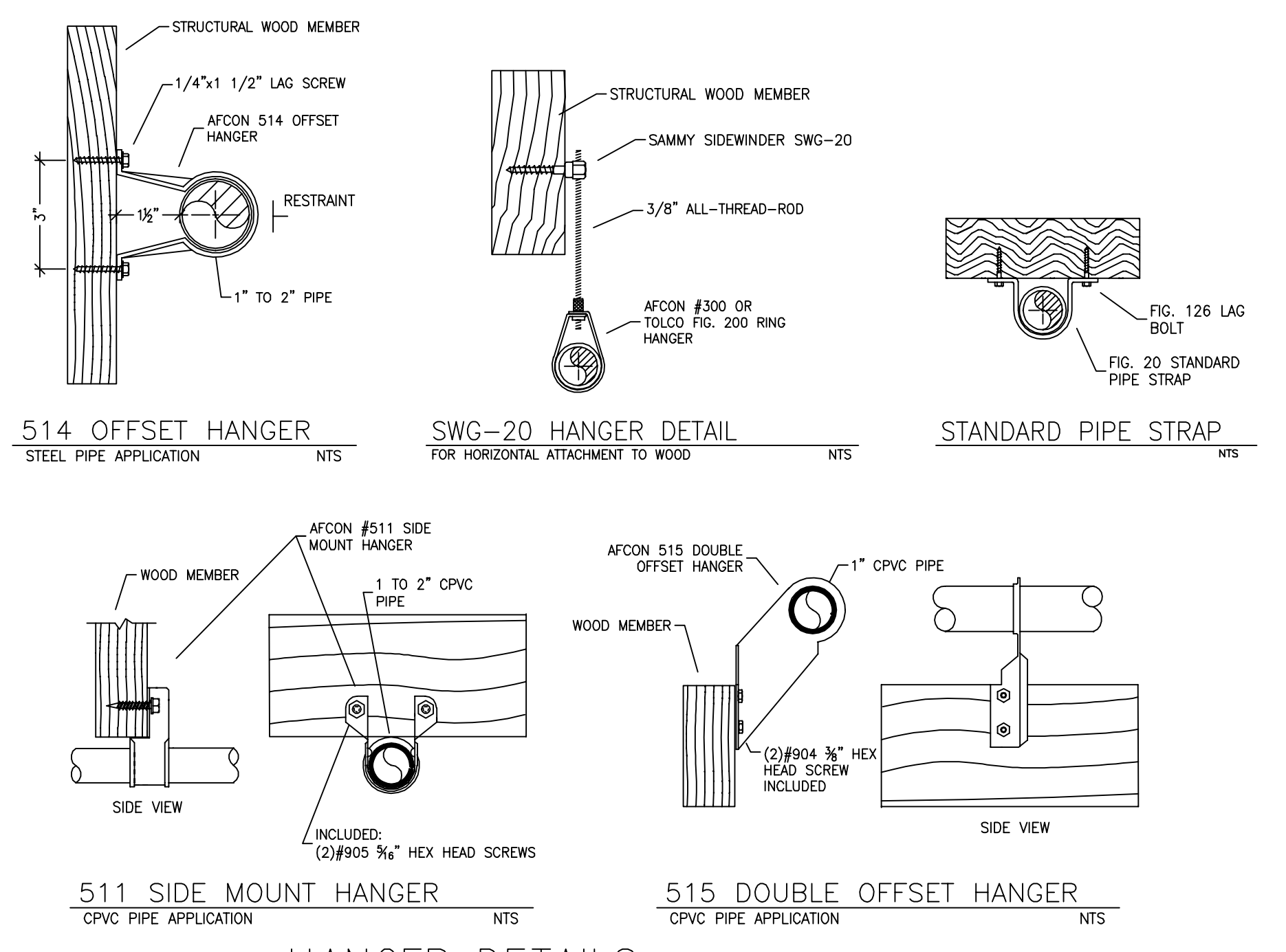
STAMP:

DRAWING TITLE:  
**FIRE SPRINKLER PLAN**

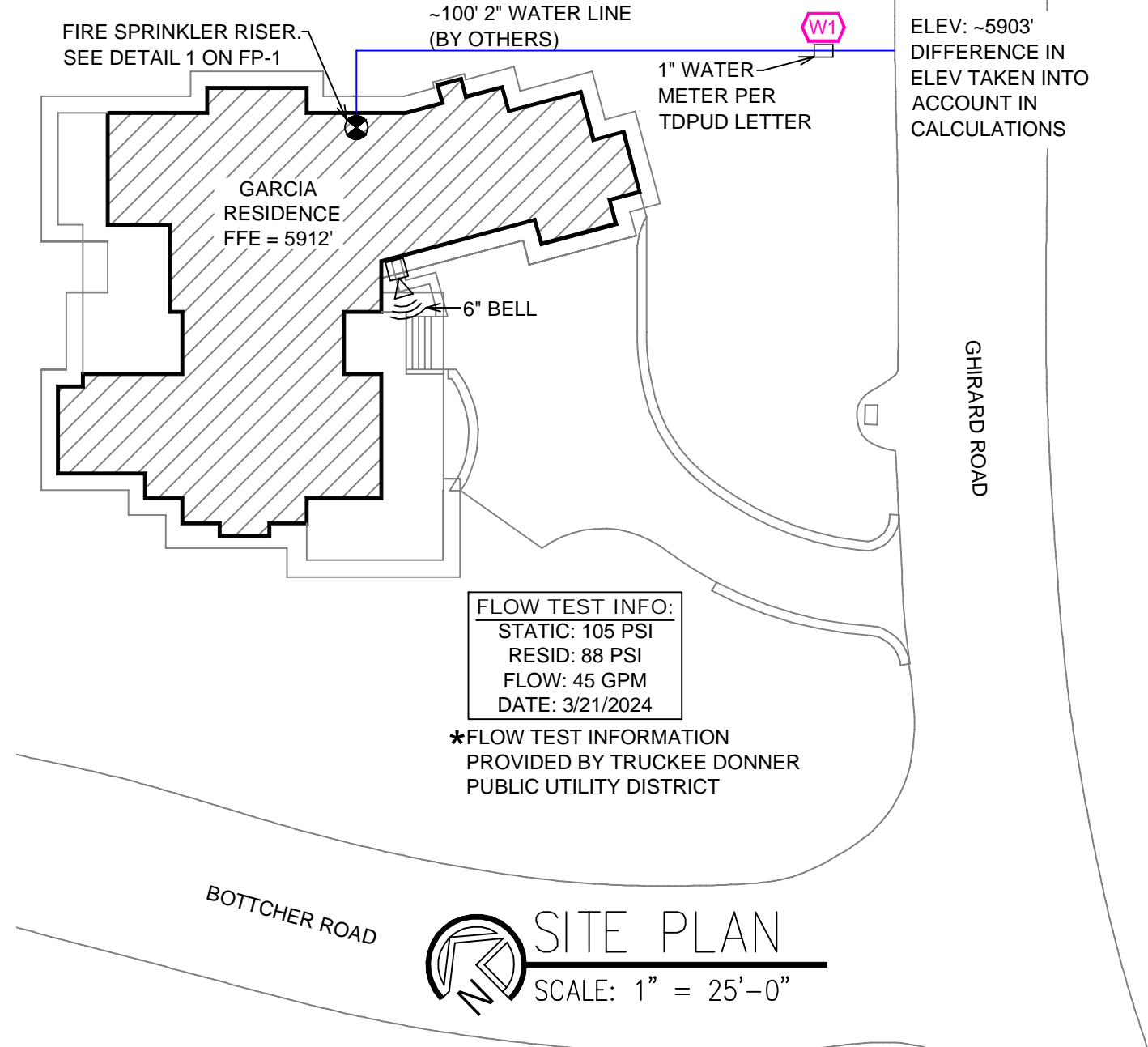
SCALE: 1/8" = 1'-0" JOB NO.:  
 DRAWN BY: DWG NO.:  
 BORN ON DATE: 9/16/2024  
 FILE: SHEET 1 OF 1



**A BUILDING SECTION**  
SCALE: 1/8" = 1'-0"



**HANGER DETAILS**



**SITE PLAN**  
SCALE: 1" = 25'-0"