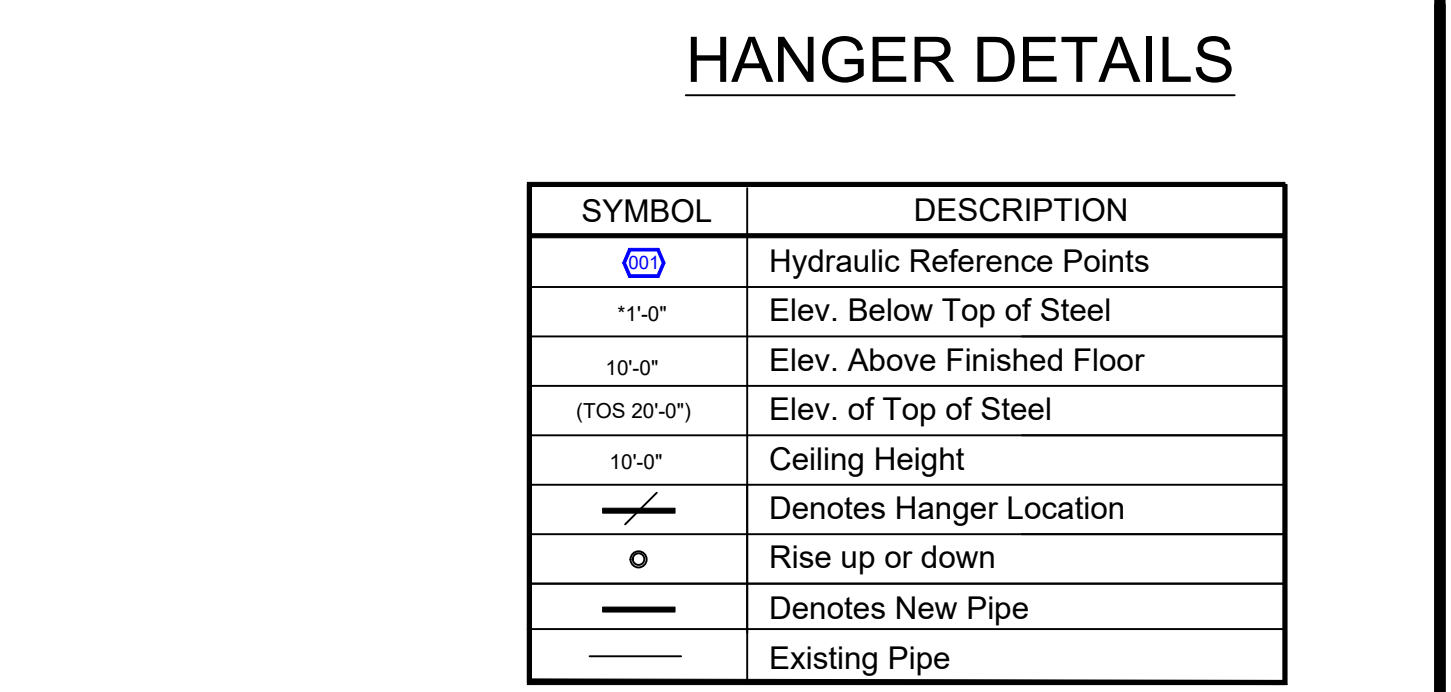
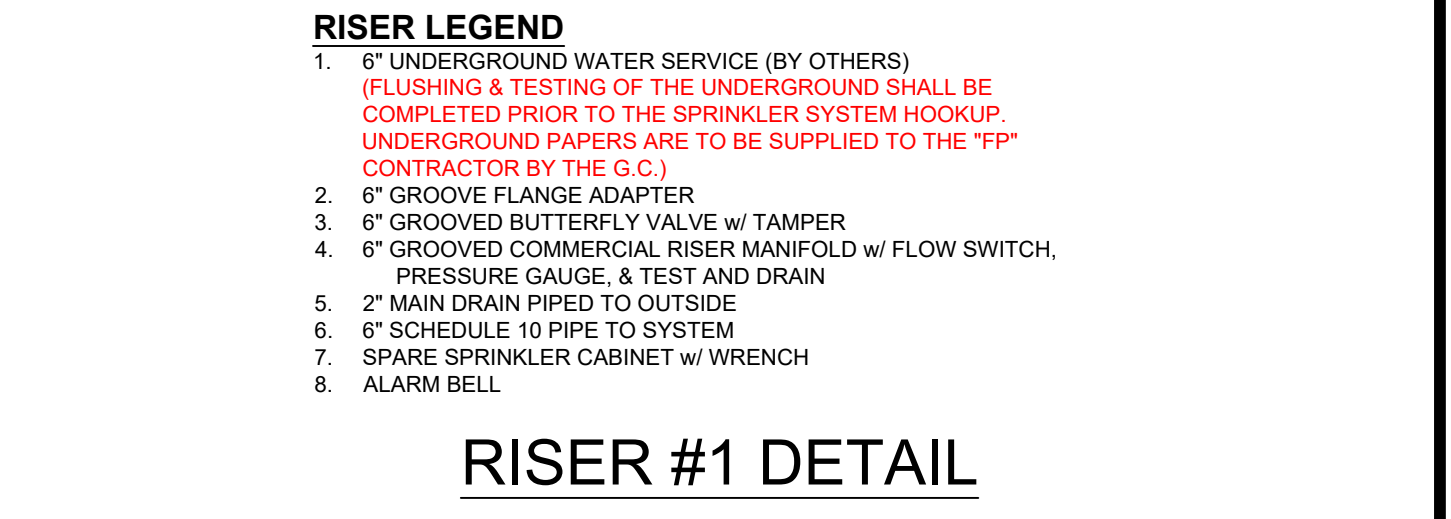


MAXIMUM DISTANCE BETWEEN HANGERS					
NOMINAL PIPE SIZE (in.)	1"	1-1/2"	2"	2-1/2"	3"
STEEL PIPE	12-0"	15-0"	15-0"	15-0"	12-6"

\*MAX DISTANCES FOR 3" - 6" PIPE DETERMINED BY STRUCTURAL ENGINEER

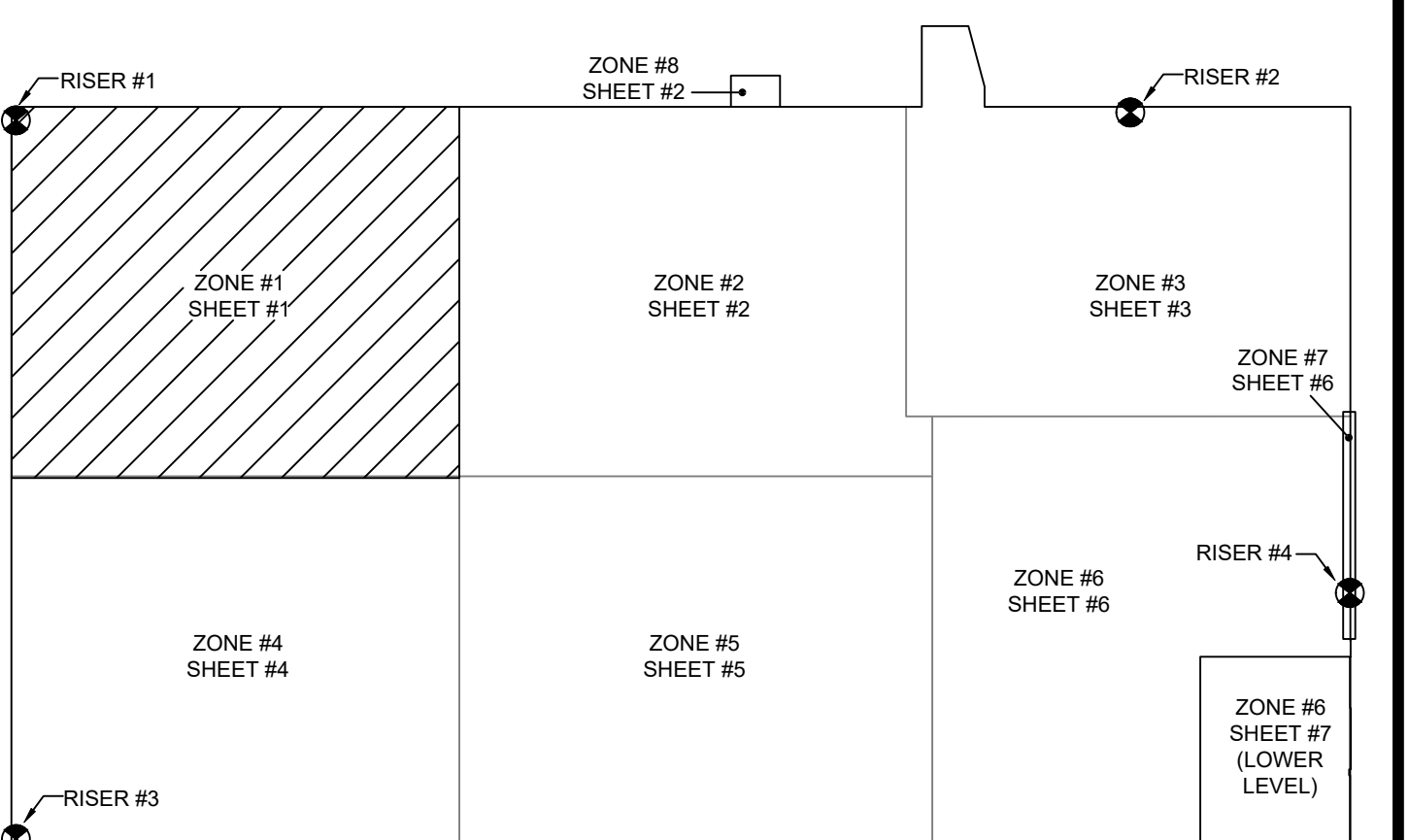


SYMBOL	DESCRIPTION
○	Hydraulic Reference Points
1'-0"	Elev. Below Top of Steel
10'-0"	Elev. Above Finished Floor
(TOS 20'-0")	Elev. of Top of Steel
10'-0"	Ceiling Height
○	Denotes Hanger Location
○	Rise up or down
—	Denotes New Pipe
—	Existing Pipe



**HAZARD: OH-2**  
 Zone: 1 System Type: WET  
 Location: INTEGRATIONS AREA  
 NORTHWEST  
 Flowing Outlet: 9  
 Density: 0.20 Remote Area: 1500  
 Flow: 613.1 gpm @ 55.4 psi  
 Calculation Safety: 10.8 psi  
 Includes: 250 gpm Hose allowance

EXTENDED COVERAGE HEADS  
 CALCULATED AT MAX SPACING  
 OF 18 x 18



**ZONE 1 SPRINKLERS**

SYM	QTY	POSITION	FINISH	TEMP	K	NPT	SN	MPG	MODEL#	ESCU/CHCON	MAX SPACING
17	1	UPRRIGHT	BRASS	200	5.00	1/2"	RA1425	RELIABLE	FTFR56	N/A	225 SF LIGHT 130 SF OH
38	1	PENDENT	WHITE	212	5.60	1/2"	R2115	RELIABLE	CALC	CONCEALED	225 SF LIGHT
40	1	PENDENT	WHITE	165	11.20	3/4"	R7146	RELIABLE	GA-XLO	CONCEALED	18x18
8	1	PENDENT	WHITE	212	5.60	1/2"	R504	RELIABLE	WP96C	CONCEALED	15-0 MAX BETWEEN SPRINKLERS
9	1	PENDENT	CHROME	5.00	1/2"	R502	RELIABLE	WPS9L	N/A	12-0 MAX BETWEEN SPRINKLERS	
13	1	PENDENT	STAINLESS	5.00	1/2"	R502	RELIABLE	WPS9L	N/A	12-0 MAX BETWEEN SPRINKLERS	
38	1	SPRNG	BRASS	200	5.00	1/2"	RA1425	RELIABLE	FTFR56	N/A	225 SF LIGHT 130 SF OH
17	1	SIDEWALL	BRASS	175	5.60	1/2"	TY3332	TYCO	TY-FRB	N/A	16x20
191	1	TOTAL									

NOTE: ALL SPRINKLERS SHALL BE QUICK RESPONSE UNLESS NOTED OTHERWISE

SEE SHEET 7 FOR SITE PLAN AND GENERAL NOTES

# ZONE #1 FIRE SPRINKLER

**GENERAL SYSTEM INFORMATION**

- ALL THREADED PIPING - SCHEDULE 40
- ALL GROOVED PIPING - SCHEDULE 10
- TOTAL AREA PROTECTED BY SYSTEM = SEE PLAN
- DRY SYSTEM CAPACITY (IF APPLIC.) = N/A
- OCCUPANCY CLASSIFICATION (U.N.O.) - INTEGRATIONS AREA: OH-1 OFFICE: LIGHT
- ALL PIPING SHALL BE READILY AVAILABLE FOR FLUSHING

**WATER SUPPLY DATA**

STATIC PRESSURE: 68 psi  
 RESIDUAL PRESSURE: 60 psi  
 FLOW: 1395 gpm

ORIFICE SIZE: 2.5"  
 SIZE & TYPE OF MAIN

DATE OF FLOW TEST: 03-01-24  
 TIME OF FLOW TEST: 9:45 a.m.  
 LOCATION OF TEST: Davenport St HYD 199 & 200

**DESIGN CRITERIA**

SEE REMOTE AREA REPORTS ON PLANS FP1 - FP7

**REVISIONS**

DATE	DESCRIPTION
11/4/24	OH-2 CLASSIFICATION CHANGE
11/15/24	FINAL REVIEW COMMENTS ADDRESSED

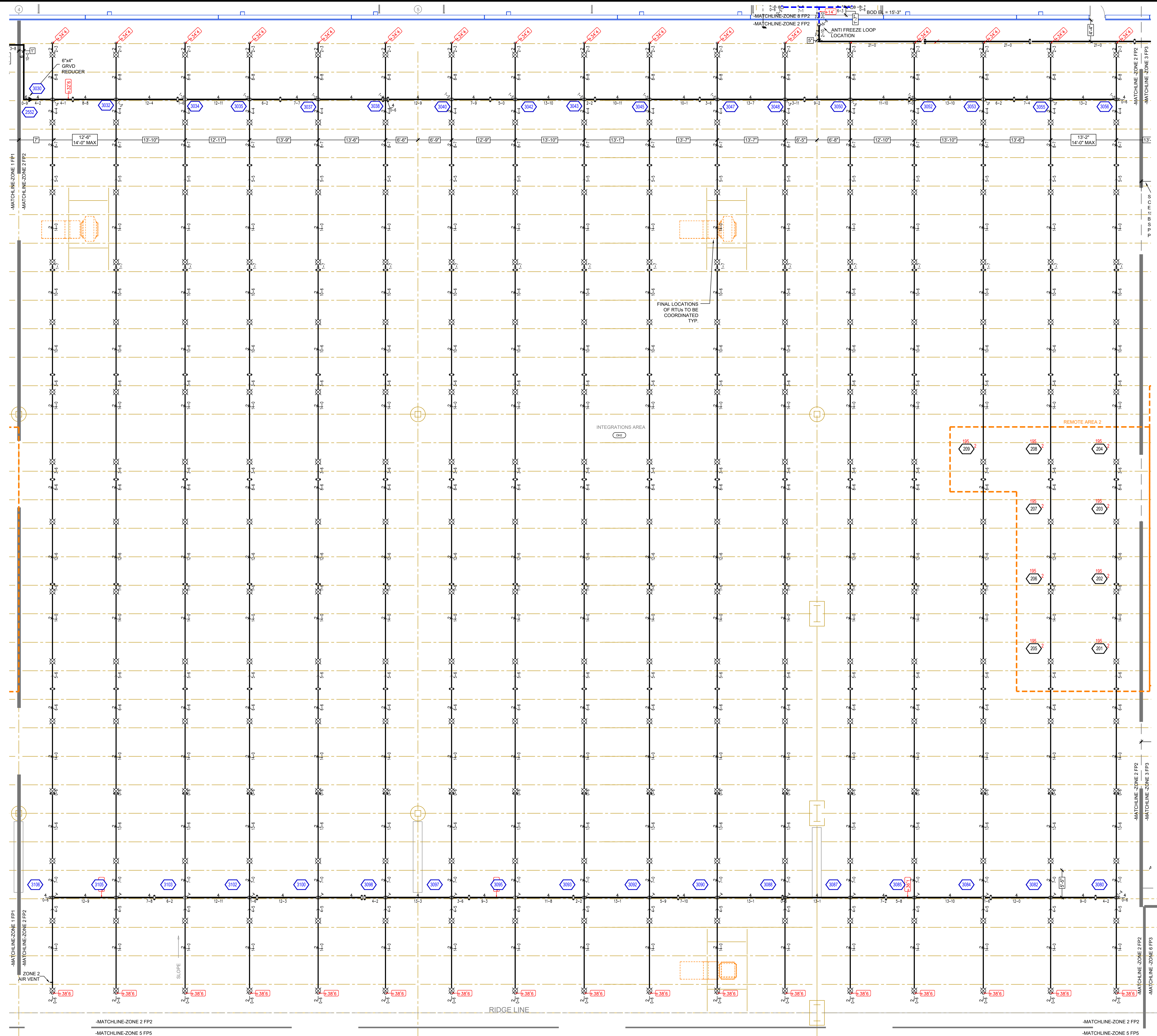
**SPRINKLERS**

SYM	QTY	POSITION	FINISH	TEMP	K	NPT	SN	MPG	MODEL#	ESCU/CHCON	MAX SPACING
17	1	UPRRIGHT	BRASS	200	5.00	1/2"	RA1425	RELIABLE	FTFR56	N/A	225 SF LIGHT 130 SF OH
38	1	PENDENT	WHITE	212	5.60	1/2"	R2115	RELIABLE	CALC	CONCEALED	225 SF LIGHT
40	1	PENDENT	WHITE	165	11.20	3/4"	R7146	RELIABLE	GA-XLO	CONCEALED	18x18
8	1	PENDENT	WHITE	212	5.60	1/2"	R504	RELIABLE	WP96C	CONCEALED	15-0 MAX BETWEEN SPRINKLERS
9	1	PENDENT	CHROME	5.00	1/2"	R502	RELIABLE	WPS9L	N/A	12-0 MAX BETWEEN SPRINKLERS	
13	1	PENDENT	STAINLESS	5.00	1/2"	R502	RELIABLE	WPS9L	N/A	12-0 MAX BETWEEN SPRINKLERS	
38	1	SPRNG	BRASS	200	5.00	1/2"	RA1425	RELIABLE	FTFR56	N/A	225 SF LIGHT 130 SF OH
17	1	SIDEWALL	BRASS	175	5.60	1/2"	TY3332	TYCO	TY-FRB	N/A	16x20
191	1	TOTAL									

**CONTRACT w/ ADDRESS CITY PHONE ARCHITECT ADDRESS CITY PHONE**

**PROJECT: FIBREBOND WAREHOUSE BUILDING M3 ADDRESS: 1300 DAVENPORT DRIVE, CITY: MINDEN, LA, 71055 SHEET TITLE: ZONE 1 FIRE PROTECTION PLAN**

**DRAWN BY: AMM ESTIMATED BY: JBR DATE: 11/04/24 SHEET 1 OF 7 SHEETS**



MAXIMUM DISTANCE BETWEEN HANGERS						
NOMINAL PIPE SIZE (in.)	1"	1-1/2"	2"	2-1/2"	3"	4"
STEEL PIPE	12-0"	15-0"	15-0"	15-0"	12-6"	12-6"

\*MAX DISTANCES FOR 3" - 6" PIPE DETERMINED BY STRUCTURAL ENGINEER

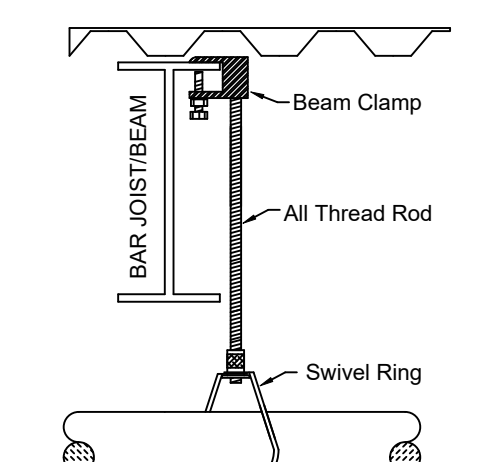
SYMBOL	DESCRIPTION
○	Hydraulic Reference Points
-1'-0"	Elev. Below Top of Steel
10'-0"	Elev. Above Finished Floor
(105 20' 0")	Elev. of Top of Steel
10'-0"	Ceiling Height
○	Denotes Hanger Location
○	Rise up or down
—	Denotes New Pipe
—	Existing Pipe

ZONE 2 SPRINKLERS

SYM	QTY	POSITION	FINISH	TEMP	K	NPT	SN	MFG	MODEL#	ESCUTCHEON	MAX SPACING
XX	255	UPRIGHT	BRASS	286	14.00	3/4"	VK570	VIKING	EQCOREC OH	N/A	14x14
	255	TOTAL									

NOTE: ALL SPRINKLERS SHALL BE QUICK RESPONSE UNLESS NOTED OTHERWISE

**CONSTRUCTION**  
METAL DECK ON STEEL JOISTS & GIRDERS, TOP OF JOIST ELEVATIONS NOTED ON DRAWING



HANGER DETAILS

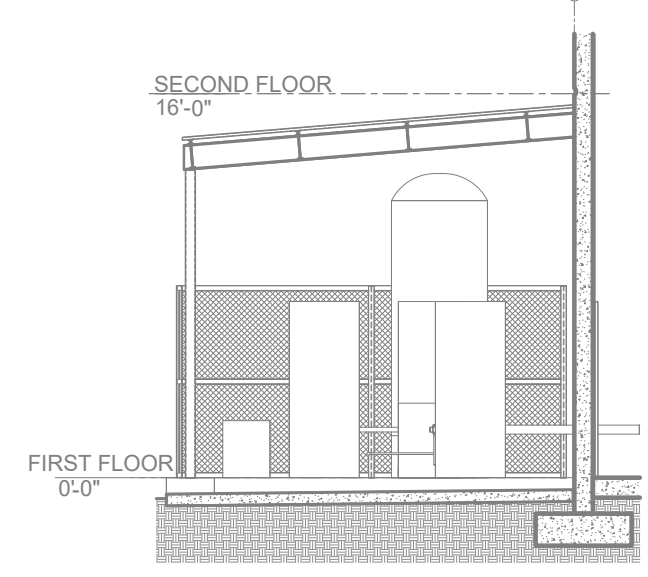
CALC PLACARD

Design Area # 2 HAZARD: OH-2  
Zone 2 System Type: WET  
Location: INTERGRATIONS AREA NORTH CENTRAL  
Flowing Outlets: 9 Remote Area: 1500  
Density: 0.20 Remote Area: 1500  
Flow: 613.1 gpm @ 56.6 psi  
Calculation Safety: 9.6 psi  
Includes 250 gpm Hose allowance

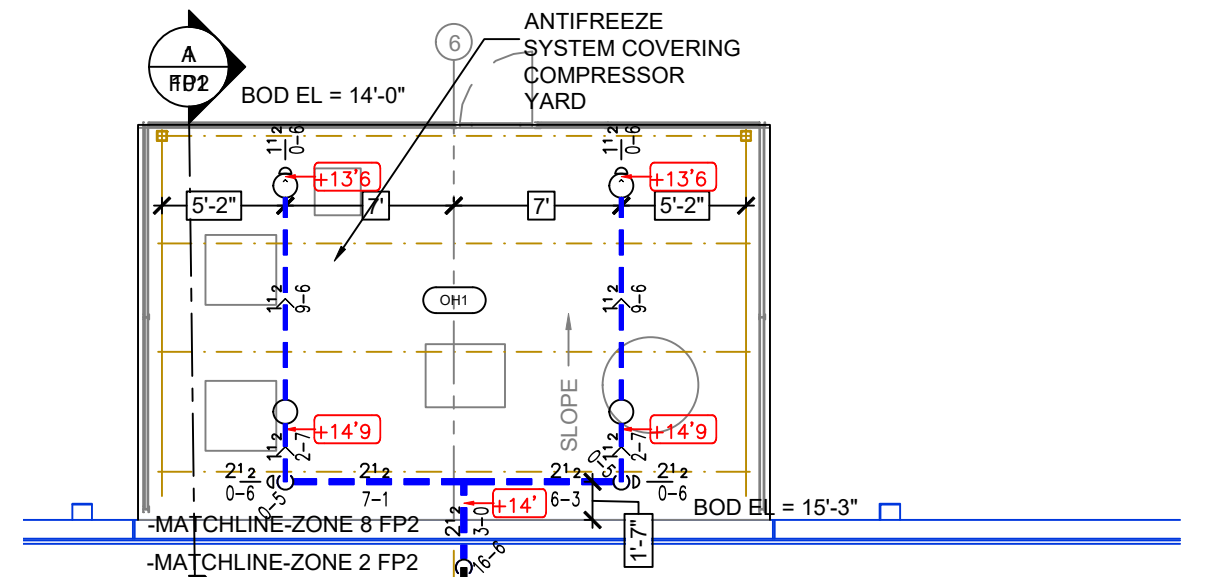
EXTENDED COVERAGE HEADS  
CALCULATED AT MAX SPACING  
OF 18 x 18

**PIPE LEGEND**

- BLACK STEEL WET SYSTEM PIPING
- BLACK STEEL DELUGE SYSTEM PIPING
- BLACK STEEL ANTI-FREEZE SYSTEM PIPING
- UNDERGROUND DI PIPING (BY OTHERS)



A-BUILDING SECTION - COMPRESSOR YARD  
SCALE = 1/8" = 1'-0"

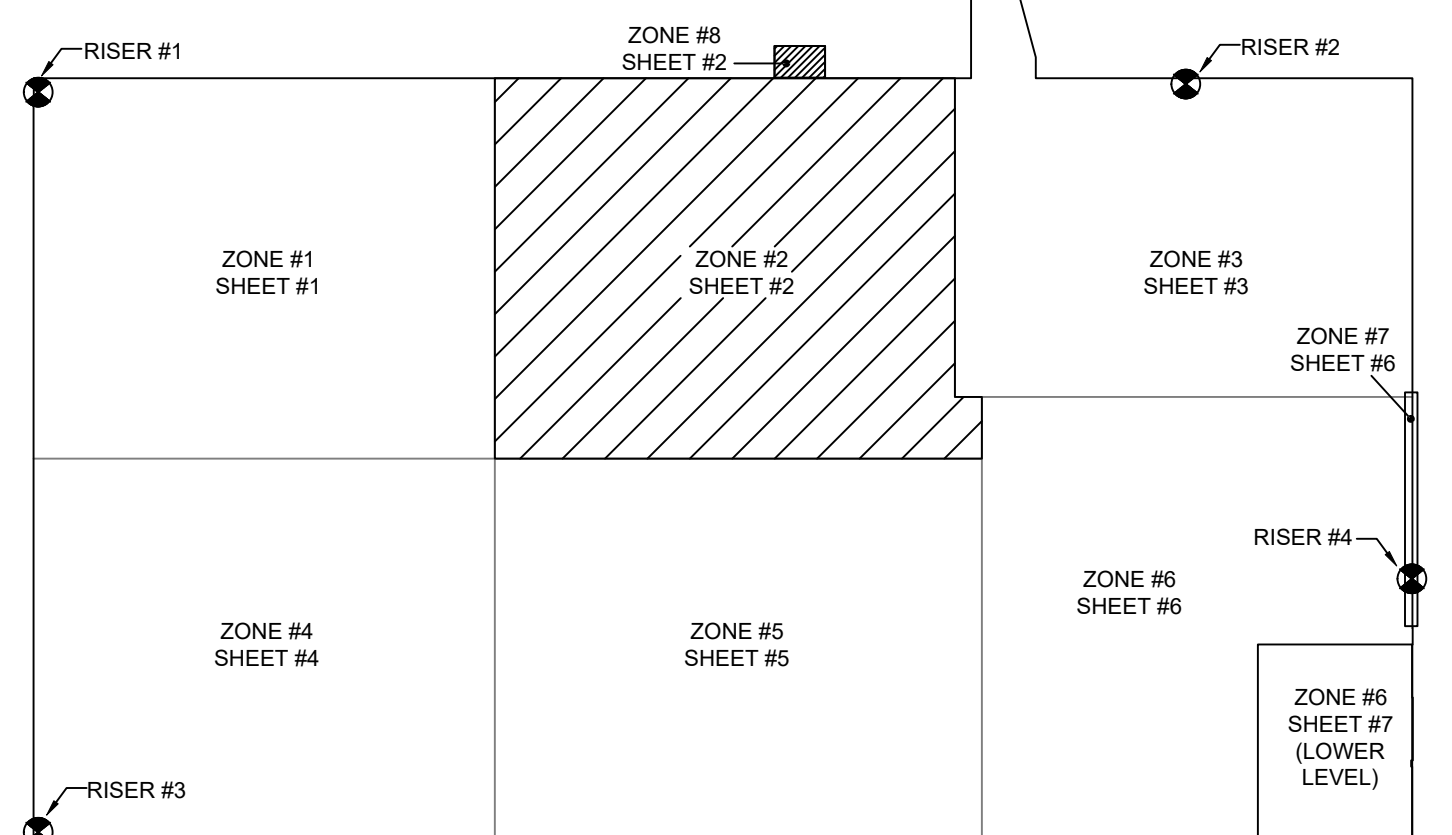


ZONE #8 FIRE SPRINKLER

ZONE 8 SPRINKLERS

SYM	QTY	POSITION	FINISH	TEMP	K	NPT	SN	MFG	MODEL#	ESCUTCHEON	MAX SPACING
○	2	UPRIGHT	BRASS	200	5.60	1/2"	RA1425	RELIABLE	F1FR56	N/A	225 SF LIGHT 130 SF OH
	2	TOTAL									

NOTE: ALL SPRINKLERS SHALL BE QUICK RESPONSE UNLESS NOTED OTHERWISE



KEY PLAN

**ZONE #2 FIRE SPRINKLER**

**GENERAL SYSTEM INFORMATION**

- ALL THREADED PIPING - SCHEDULE 40
- ALL GROOVED PIPING - SCHEDULE 10
- TOTAL AREA PROTECTED BY SYSTEM = SEE PLAN
- DRY SYSTEM CAPACITY (IF APPLIC.) = N/A
- OCCUPANCY CLASSIFICATION (U.N.O.) - INTEGRATIONS AREA: OH-1
- OFFICE: LIGHT
- ALL PIPING SHALL BE READILY AVAILABLE FOR FLUSHING

**WATER SUPPLY DATA**

STATIC PRESSURE: 68 psi  
RESIDUAL PRESSURE: 60 psi  
FLOW: 1395 gpm

ORIFICE SIZE: 2.5"  
SIZE & TYPE OF MAIN

DATE OF FLOW TEST: 03-01-24  
TIME OF FLOW TEST: 9:45 a.m.  
LOCATION OF TEST: Davenport St  
HYD 199 & 200

**DESIGN CRITERIA**

SEE REMOTE AREA REPORTS ON PLANS FP1 - FP7

**REVISIONS**

DATE	DESCRIPTION
11/4/24	OH-2 CLASSIFICATION CHANGE
11/15/24	FINAL REVIEW COMMENTS ADDRESSED

NOTE: ALL SPRINKLERS SHALL BE QUICK RESPONSE UNLESS NOTED OTHERWISE

**SPRINKLERS**

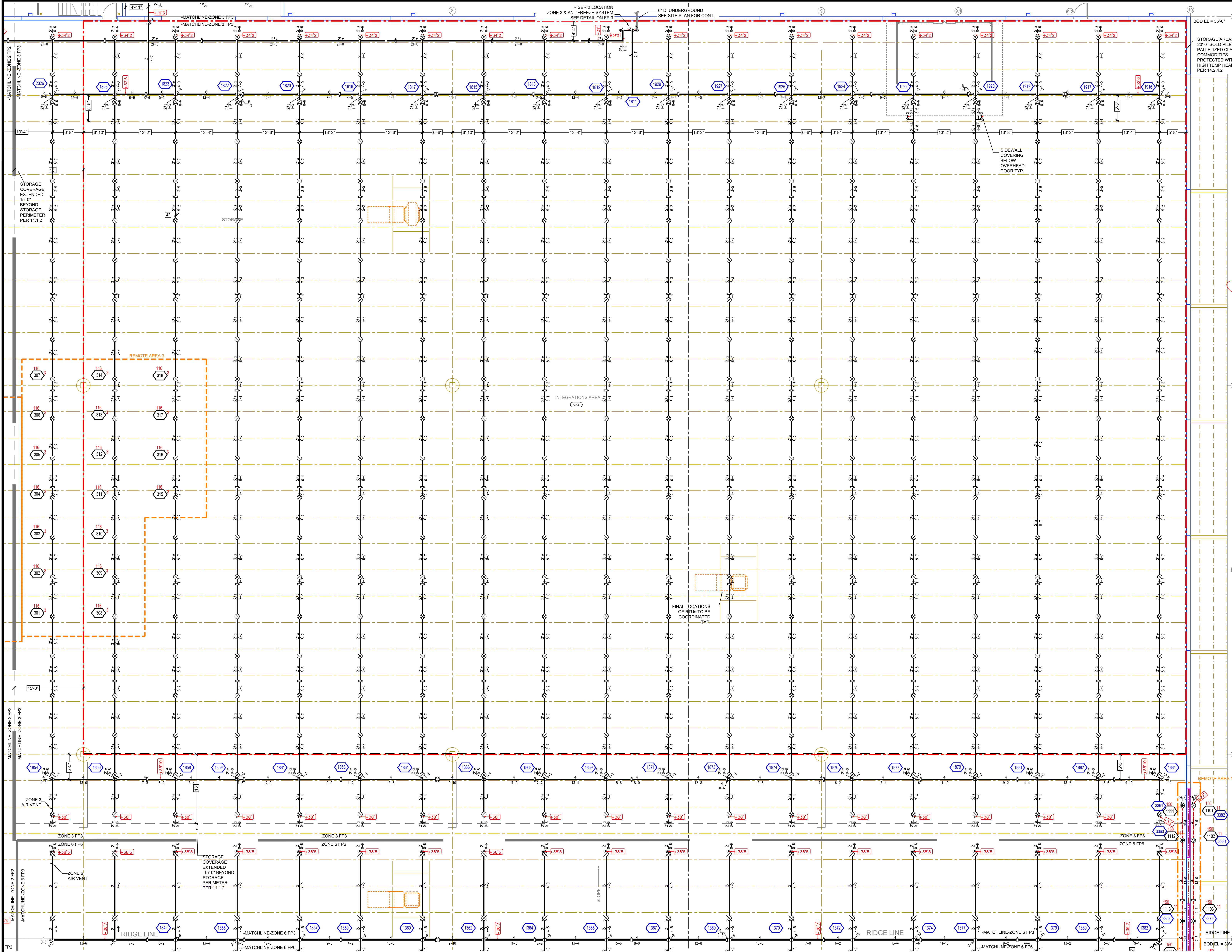
SYM	QTY	POSITION	FINISH	TEMP	K	NPT	SN	MFG	MODEL#	ESCUTCHEON	MAX SPACING
○	147	UPRIGHT	BRASS	286	14.00	3/4"	RA6223	RELIABLE	F1FR56	N/A	225 SF LIGHT 130 SF OH
○	1395	UPRIGHT	BRASS	286	14.00	3/4"	VK570	VIKING	EQCOREC OH	N/A	14x14
○	17	UPRIGHT	BRASS	200	5.60	1/2"	RA1425	RELIABLE	F1FR56	N/A	225 SF LIGHT 130 SF OH
○	35	PENDENT	WHITE	212	5.60	1/2"	R2115	RELIABLE	CALC	CONCEALED	225 SF LIGHT
○	40	PENDENT	WHITE	165	11.20	3/4"	R7146	RELIABLE	GA-XLO	CONCEALED	18x18
○	8	PENDENT	WHITE	212	5.60	1/2"	R504	RELIABLE	WP56C	CONCEALED	15-0 MAX BETWEEN SPRINKLERS
○	9	PENDENT	CHROME	OPEN	5.60	1/2"	R502	RELIABLE	WP56L	N/A	12-0 MAX BETWEEN SPRINKLERS
○	13	PENDENT	STAINLESS	OPEN	5.60	1/2"	R502	RELIABLE	WP56L	N/A	12-0 MAX BETWEEN SPRINKLERS
○	38	SPRNG	BRASS	200	5.60	1/2"	RA1425	RELIABLE	F1FR56	N/A	225 SF LIGHT 130 SF OH
○	17	SEAWALL	BRASS	175	5.60	1/2"	TY3332	TYCO	TY-FRB	N/A	16x20
	1971	TOTAL									

**CONTRACT w/**  
ADDRESS  
CITY  
PHONE

**ARCHITECT**  
ADDRESS  
CITY  
PHONE

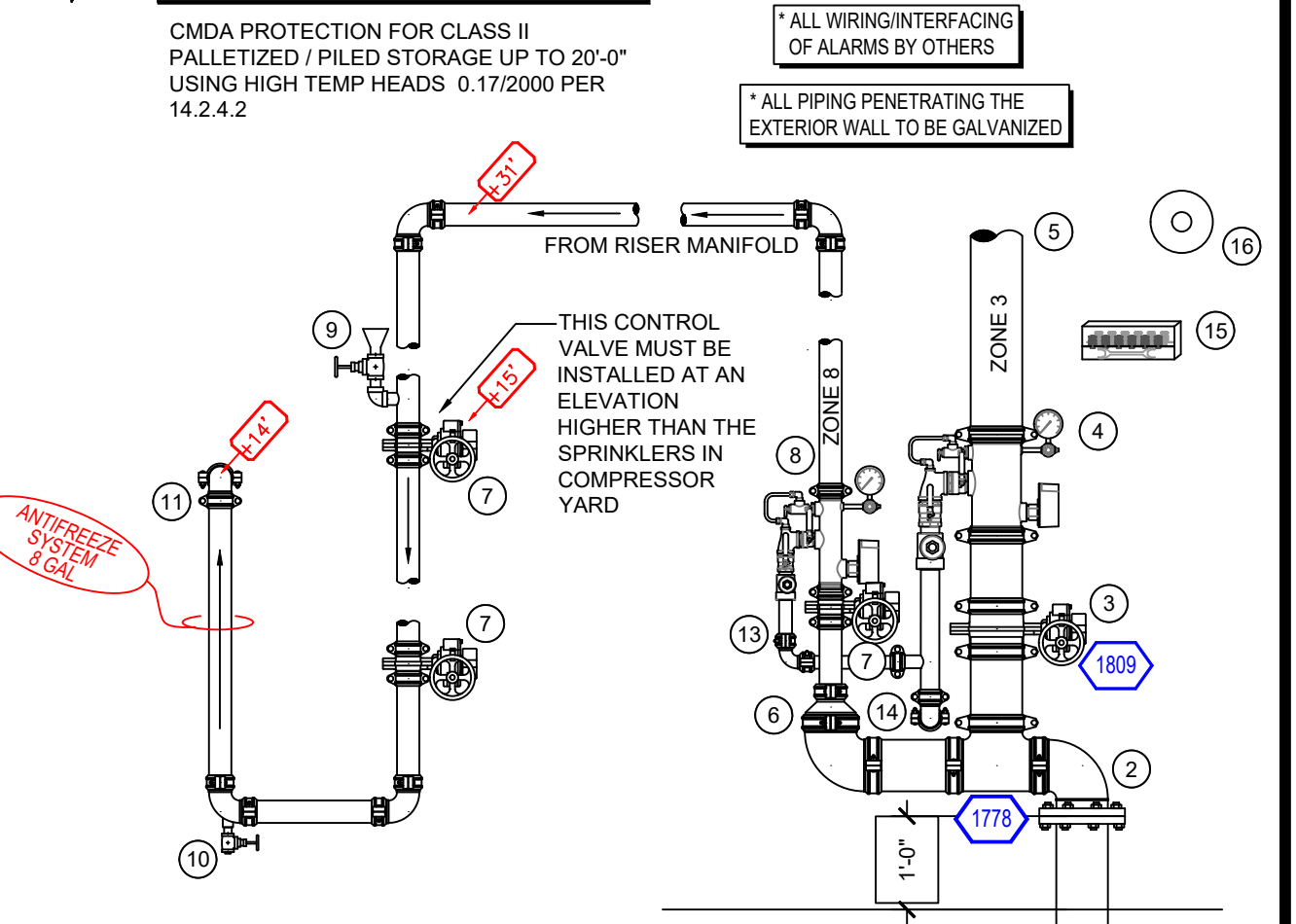
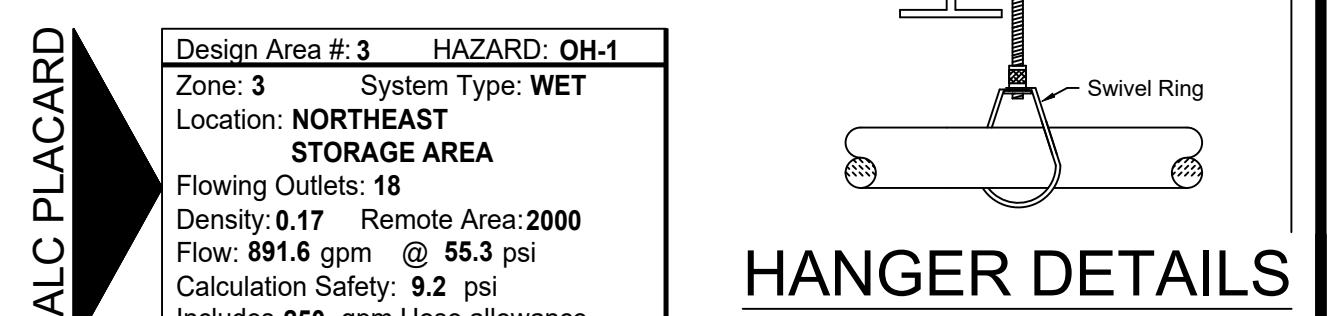
**PROJECT:** FIBREBOND WAREHOUSE BUILDING M3  
**ADDRESS:** 1300 DAVENPORT DRIVE,  
MINDEN, LA, 71055  
**SHEET TITLE:** ZONE 2 & 8 FIRE PROTECTION PLAN

**DRAWN BY:** AMM  
**ESTIMATED BY:**  
JOB NO: 10574  
DATE: 11/04/24  
**SHEET**  
2  
OF 7 SHEETS

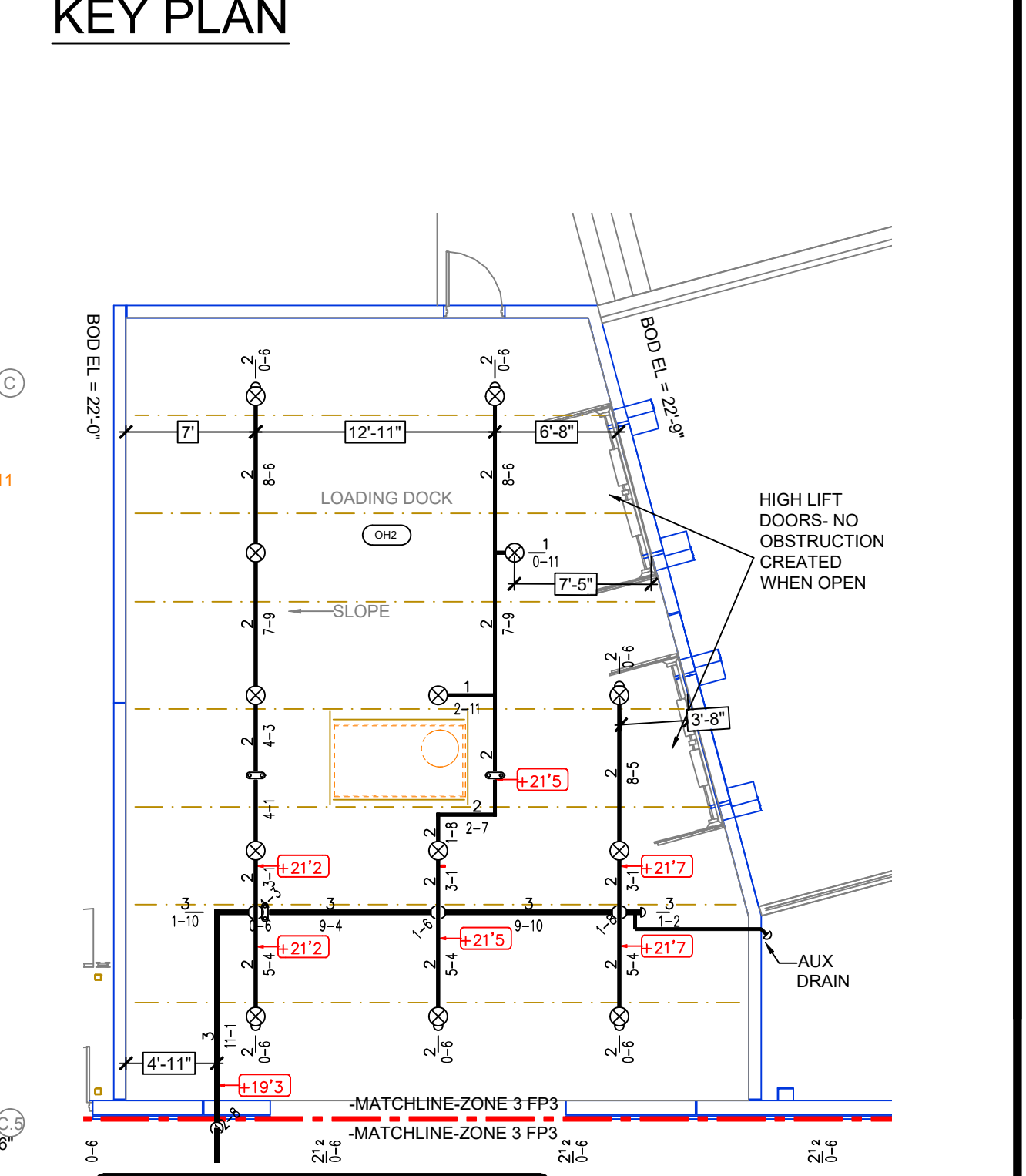
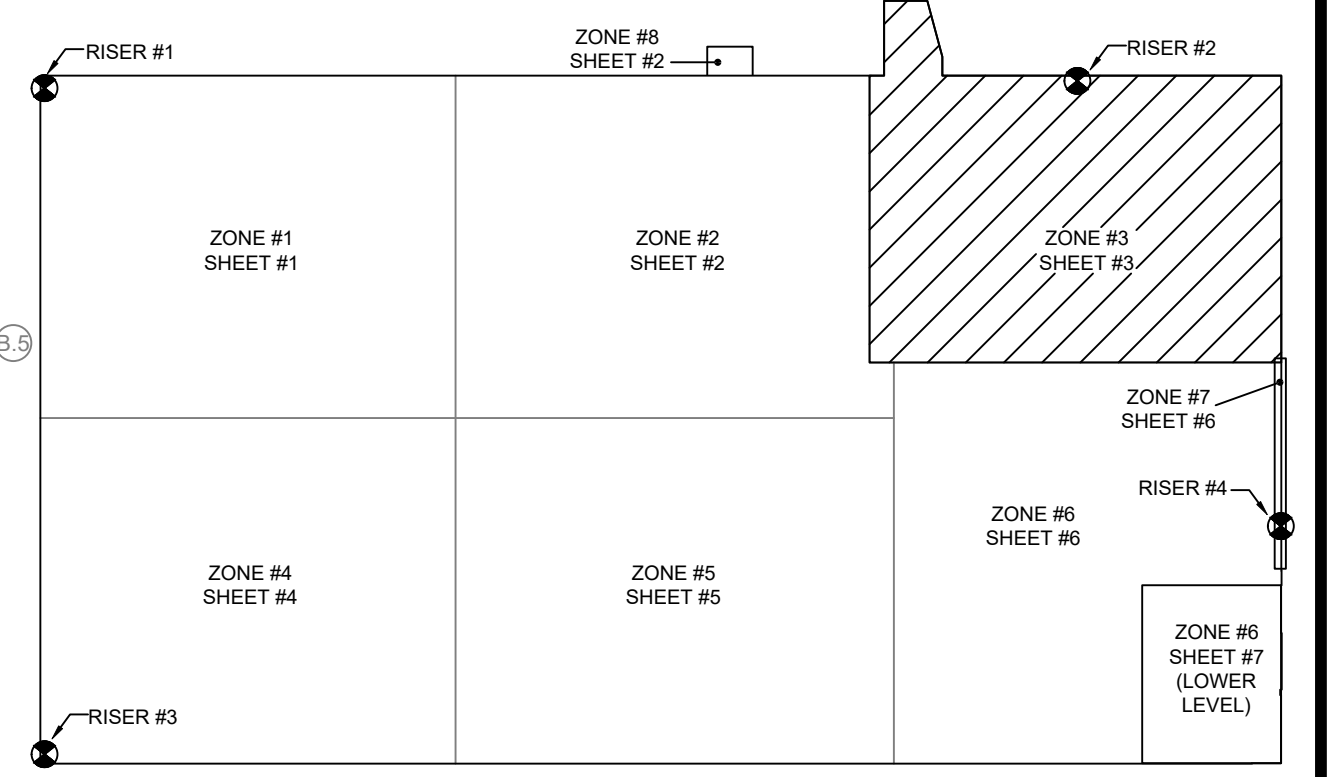


MAXIMUM DISTANCE BETWEEN HANGERS						
NOMINAL PIPE SIZE (in.)	1"	1-1/2"	2"	2-1/2"	3"	4"
STEEL PIPE	12-0"	15-0"	15-0"	15-0"	12-6"	6-3"

\*MAX DISTANCES FOR 3" PIPE DETERMINED BY STRUCTURAL ENGINEER



- RISER LEGEND**
- 6" UNDERGROUND WATER SERVICE (BY OTHERS) (FLUSHING & TESTING OF THE UNDERGROUND SHALL BE COMPLETED PRIOR TO THE SPRINKLER SYSTEM HOOKUP. UNDERGROUND PAPERS ARE TO BE SUPPLIED TO THE TYP. CONTRACTOR BY THE G.C.)
  - 6" GROOVE FLANGE ADAPTER
  - 6" GROOVED BUTTERFLY VALVE w/ TAMPER, PRESSURE GAUGE, & TEST AND DRAIN
  - 6" SCHEDULE 40 PIPE TO SYSTEM
  - 6"x2-1/2" GROOVED CONCENTRIC REDUCER
  - 2-1/2" GROOVED BUTTERFLY VALVE w/ TAMPER
  - 2-1/2" GROOVED COMMERCIAL RISER MANIFOLD w/ FLOW SWITCH, PRESSURE GAUGE, & TEST AND DRAIN
  - ANTIFREEZE FILL CUP
  - DRAIN VALVE
  - 2-1/2" SCHEDULE 40 PIPE TO SYSTEM
  - 1-1/4" MAIN DRAIN PIPED TO OUTSIDE
  - 2" MAIN DRAIN PIPED TO OUTSIDE
  - SPARE SPRINKLER CABINET w/ WRENCH
  - ALARM BELL



### ZONE #3 FIRE SPRINKLER

**GENERAL SYSTEM INFORMATION**

- ALL THREADED PIPING - SCHEDULE 40
- ALL GROOVED PIPING - SCHEDULE 10
- TOTAL AREA PROTECTED BY SYSTEM = SEE PLAN
- DRY SYSTEM CAPACITY (IF APPLIC.) = N/A
- OCCUPANCY CLASSIFICATION (U.N.O.) - INTEGRATIONS AREA: OH-1 OFFICE; LIGHT
- ALL PIPING SHALL BE READILY AVAILABLE FOR FLUSHING

**WATER SUPPLY DATA**

STATIC PRESSURE: 68 psi  
RESIDUAL PRESSURE: 68 psi  
FLOW: 1395 gpm

ORIFICE SIZE: 2.5"  
SIZE & TYPE OF MAIN

DATE OF FLOW TEST: 03-01-24  
TIME OF FLOW TEST: 9:45 a.m.  
LOCATION OF TEST: Davenport St HYD 199 & 200

**DESIGN CRITERIA**

SEE REMOTE AREA REPORTS ON PLANS FP1 - FP7

**REVISIONS**

DATE	DESCRIPTION
11/4/24	OH-2 CLASSIFICATION CHANGE
11/15/24	FINAL REVIEW COMMENTS ADDRESSED

**SPRINKLERS**

SYMBOL	QTY	POSITION	FINISH	TEMP. K	RPT. SRN	MPG	MODEL#	ESCU/CH/CONT/MAX SPACINGS
417	1	UPRRIGHT	BRASS	286	8.00	3/4"	RAM222	RELIABLE F1-80 N/A 225 SF LIGHT 130 SF CH
17	1	UPRRIGHT	BRASS	286	14.00	3/4"	VK570	VIKING EDGREQ CH N/A 14x14
17	1	UPRRIGHT	BRASS	200	5.00	1/2"	RA1425	RELIABLE FTFR56 N/A 225 SF LIGHT 130 SF CH
35	1	PENDENT	WHITE	212	5.00	1/2"	RE115	RELIABLE GAC CONCEALED 225 SF LIGHT
40	1	PENDENT	WHITE	165	11.00	3/4"	R7146	RELIABLE GA-XLO CONCEALED 18x18
8	1	PENDENT	WHITE	212	5.00	1/2"	R504	RELIABLE WPG6C CONCEALED 15-0 MAX BETWEEN SPRINKLERS
9	1	PENDENT	CHROME	500	5.00	1/2"	R502	RELIABLE WPS6L N/A 12-0 MAX BETWEEN SPRINKLERS
13	1	PENDENT	STAINLESS	500	5.00	1/2"	R509	RELIABLE WPS6L N/A 12-0 MAX BETWEEN SPRINKLERS
38	1	SPRNG	BRASS	200	5.00	1/2"	RA1425	RELIABLE FTFR56 N/A 225 SF LIGHT 130 SF CH
41	1	SIDEWALL	BRASS	175	5.00	1/2"	TY3332	TYCO TY-FRB N/A 16x20
414	1	TOTAL						

**CONTRACT w/ ADDRESS CITY PHONE**

**ARCHITECT ADDRESS CITY PHONE**

**PROJECT: FIBREBOND WAREHOUSE BUILDING M3**

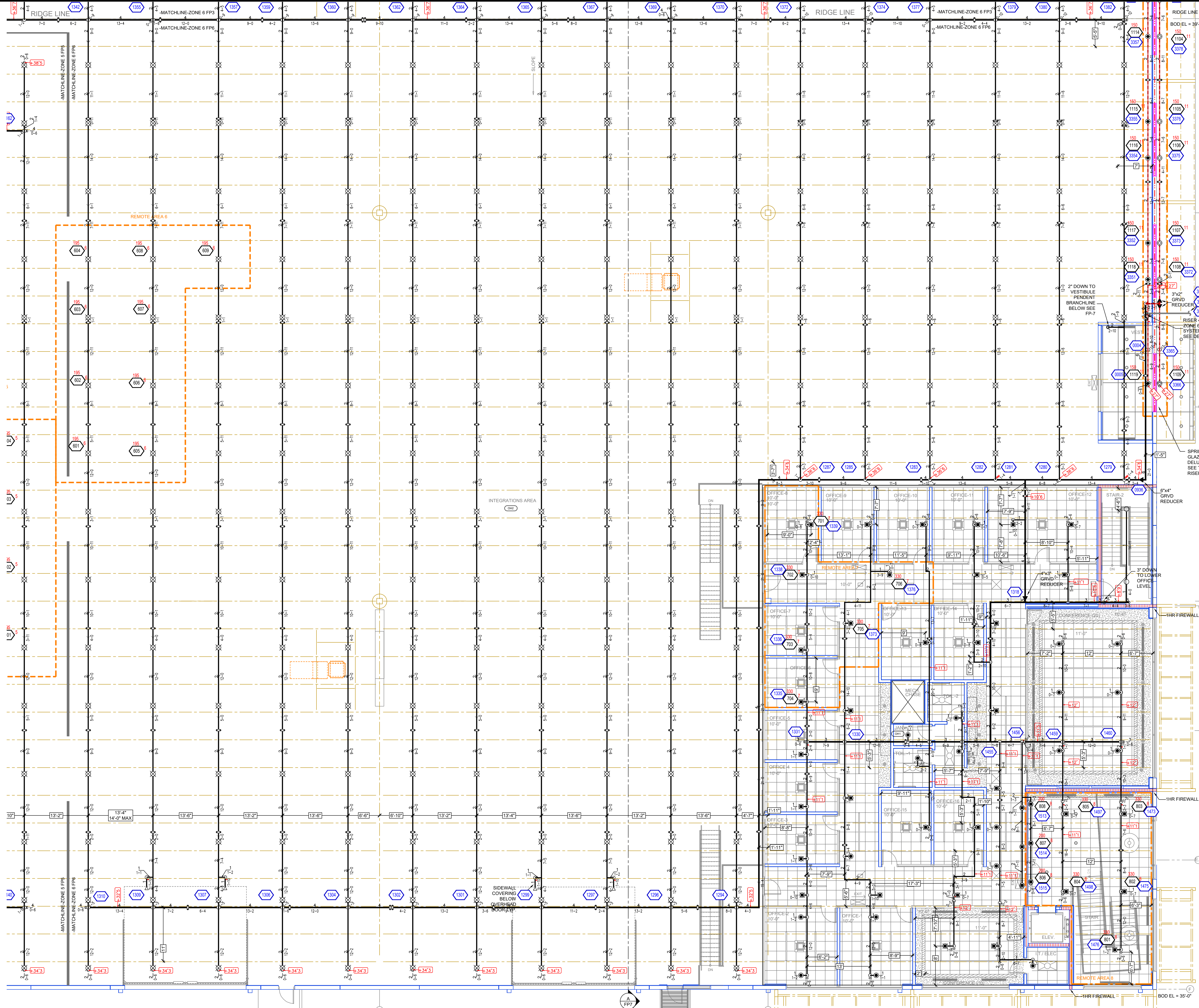
**ADDRESS: 1300 DAVENPORT DRIVE, CITY: MINDEN, LA, 71055**

**SHEET TITLE: ZONE 3 FIRE PROTECTION PLAN**

**DRAWN BY: AMM ESTIMATED BY: JOR TNO DATE: 10/24/24 SHEET 3 OF 7 SHEETS**

NOTE: ALL SPRINKLERS SHALL BE QUICK RESPONSE UNLESS NOTED OTHERWISE

NOTE: ALL SPRINKLERS SHALL BE QUICK RESPONSE UNLESS NOTED OTHERWISE



### HANGER DETAILS

MAXIMUM DISTANCE BETWEEN HANGERS	
NOMINAL PIPE SIZE (in.)	MAXIMUM DISTANCE (ft)
STEEL PIPE	1' 1-1/2", 2', 2-1/2", 3', 4', 6'
*MAX DISTANCES FOR 3" - 6" PIPE DETERMINED BY STRUCTURAL ENGINEER	

SYMBOL	DESCRIPTION
○	Hydraulic Reference Points
-1'-0"	Elev. Below Top of Steel
10'-0"	Elev. Above Finished Floor
(105.20'-0")	Elev. of Top of Steel
10'-0"	Ceiling Height
—	Denotes Hanger Location
○	Rise up or down
—	Denotes New Pipe
—	Existing Pipe

### CALC PLACARD

**Design Area # 6 HAZARD: OH-2**  
 Zone: 6 System Type: WET  
 Location: INTEGRATIONS AREA SOUTHEAST

Flowing Outlets: 9  
 Density: 0.20 Remote Area: 1500  
 Flow: 513.1 gpm @ 55.1 psi  
 Calculation Safety: 10.2 psi  
 Includes 250 gpm Hose allowance

EXTENDED COVERAGE HEADS CALCULATED AT MAX SPACING OF 18 x 18

**Design Area # 7 HAZARD: LIGHT**  
 Zone: 6 System Type: WET  
 Location: OFFICES

Flowing Outlets: 6  
 Density: 0.10 Remote Area: 900  
 Flow: 306.5 gpm @ 55 psi  
 Calculation Safety: 12.5 psi  
 Includes 100 gpm Hose allowance

EXTENDED COVERAGE HEADS CALCULATED AT MAX SPACING OF 18 x 18  
 REMOTE AREA REDUCED BY 40% FOR 10'-0" CEILINGS PER 11.2.3.2.3

**Design Area # 8 HAZARD: LIGHT**  
 Zone: 6 System Type: WET  
 Location: LOBBY

Flowing Outlets: 8  
 Density: 0.10 Remote Area: 868  
 Flow: 338.3 gpm @ 55.2 psi  
 Calculation Safety: 12.2 psi  
 Includes 100 gpm Hose allowance

EXTENDED COVERAGE HEADS CALCULATED AT MAX SPACING OF 18 x 18  
 REMOTE AREA REDUCED BY 40% FOR 10'-0" CEILINGS PER 11.2.3.2.3

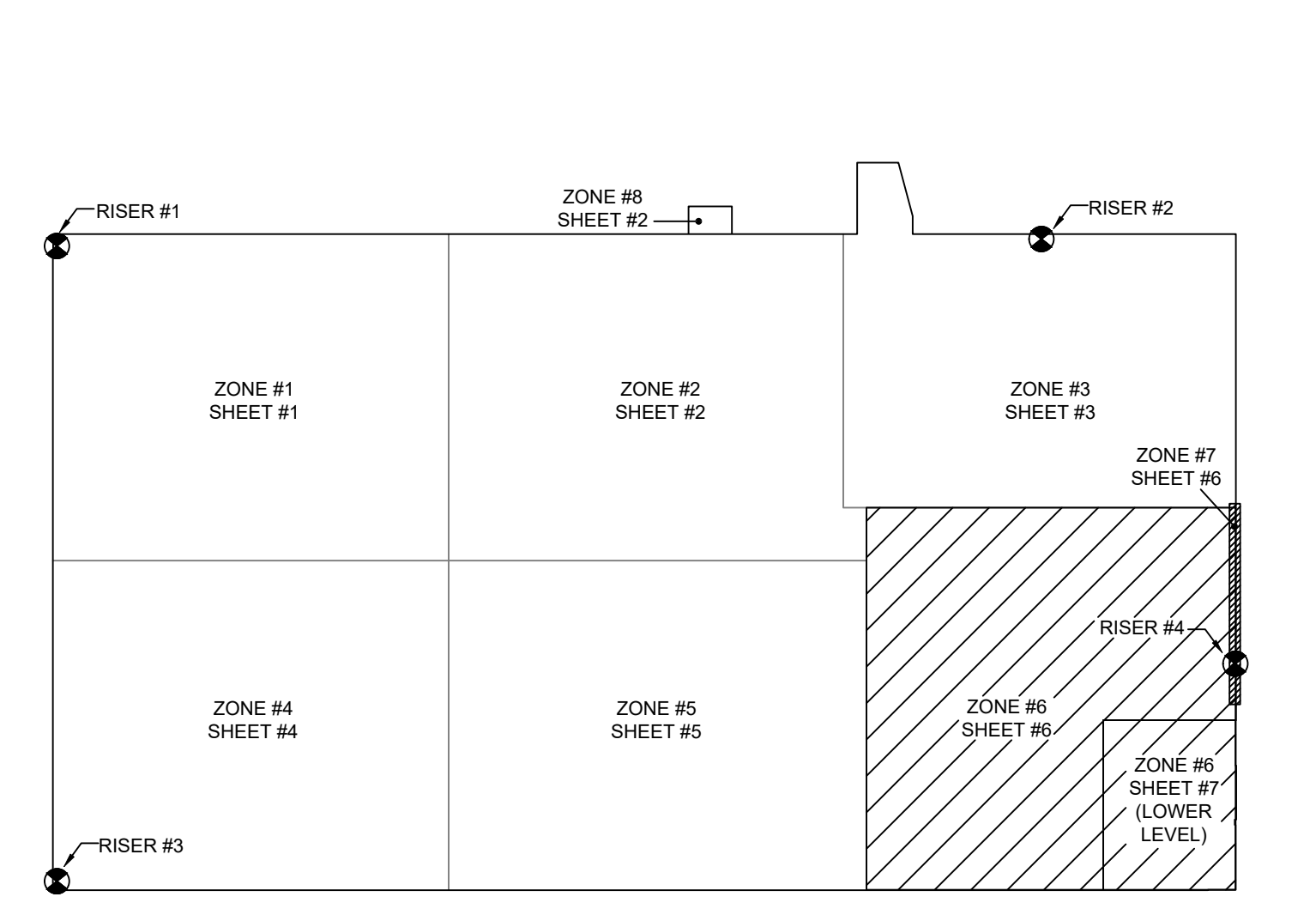
**Design Area # 11 HAZARD: LIGHT**  
 Zone: 7 System Type: DELUGE  
 Location: GLAZING

Flowing Outlets: 21  
 Density: 0.10 Remote Area: 941  
 Flow: 476.1 gpm @ 56.3 psi  
 Calculation Safety: 10.6 psi  
 Includes 100 gpm Hose allowance

ALL SPRINKLERS OF DELUGE SYSTEM CALCULATED PER SPRINKLER SPEC SHEET AND 11.3.2.1

### PIPE LEGEND

- BLACK STEEL WET SYSTEM PIPING
- BLACK STEEL DELUGE SYSTEM PIPING
- BLACK STEEL ANTIFREEZE SYSTEM PIPING
- UNDERGROUND DI PIPING (BY OTHERS)



### ZONE 6 SPRINKLERS

SYM	CNT	POSITION	FINISH	TEMP	K	NPT	ISN	MFG	MODEL#	ESCUTCHEON	MAX SPACING
245	1	UPPRIGHT	BRASS	286	14.00	3/4"	VK570	VIKING	EQDREC OH	N/A	14x14
13	1	UPPRIGHT	BRASS	200	5.60	1/2"	RA425	RELIABLE	F1FR56	N/A	225 SF LIGHT 130 SF OH
35	1	PENDENT	WHITE	115	5.60	1/2"	R2115	RELIABLE	G4-C	CONCEALED	225 SF LIGHT
40	1	PENDENT	WHITE	165	11.20	3/4"	R7146	RELIABLE	G4-XLO	CONCEALED	18x18
6	1	PENDENT	WHITE	212	5.60	1/2"	R504	RELIABLE	WP96C	CONCEALED	10'-0" MAX BETWEEN SPRINKLERS
38	1	SPRING	BRASS	200	5.60	1/2"	RA425	RELIABLE	F1FR56	N/A	225 SF LIGHT 130 SF OH
5	1	SIDEWALL	BRASS	175	5.60	1/2"	TY3332	TYCO	TY-FRB	N/A	16x20
382		TOTAL									

NOTE: ALL SPRINKLERS SHALL BE QUICK RESPONSE UNLESS NOTED OTHERWISE

### ZONE 7 SPRINKLERS

SYM	CNT	POSITION	FINISH	TEMP	K	NPT	ISN	MFG	MODEL#	ESCUTCHEON	MAX SPACING
2	1	PENDENT	WHITE	212	5.60	1/2"	R504	RELIABLE	WP96C	CONCEALED	10'-0" MAX BETWEEN SPRINKLERS
9	1	PENDENT	CHROME	OPEN	5.60	1/2"	RS02	RELIABLE	WPS6L	N/A	12'-0" MAX BETWEEN SPRINKLERS
10	1	PENDENT	STAINLESS	OPEN	5.60	1/2"	RS02	RELIABLE	WPS6L	N/A	12'-0" MAX BETWEEN SPRINKLERS
21		TOTAL									

NOTE: ALL SPRINKLERS SHALL BE QUICK RESPONSE UNLESS NOTED OTHERWISE

### CONSTRUCTION

METAL DECK ON STEEL JOISTS & GIRDERS, TOP OF JOIST ELEVATIONS NOTED ON DRAWING

## ZONE #6 FIRE SPRINKLER

GENERAL SYSTEM INFORMATION	WATER SUPPLY DATA	DESIGN CRITERIA
<ul style="list-style-type: none"> <li>ALL THREADED PIPING - SCHEDULE 40</li> <li>ALL GROOVED PIPING - SCHEDULE 10</li> <li>TOTAL AREA PROTECTED BY SYSTEM - SEE PLAN</li> <li>DRY SYSTEM CAPACITY (IF APPLIC.) = N/A</li> <li>OCCUPANCY CLASSIFICATION (U.N.O.) - INTEGRATIONS AREA: OH-1 OFFICE: LIGHT</li> <li>ALL PIPING SHALL BE READILY AVAILABLE FOR FLUSHING</li> </ul>	STATIC PRESSURE: 68 psi RESIDUAL PRESSURE: 60 psi FLOW: 1395 gpm ORIFICE SIZE: 2.5" SIZE & TYPE OF MAIN DATE OF FLOW TEST: 03-01-24 TIME OF FLOW TEST: 9:45 a.m. LOCATION OF TEST: Davenport St HYD 199 & 200	SEE REMOTE AREA REPORTS ON PLANS FP1 - FP7

### REVISIONS

DATE	DESCRIPTION
11/4/24	OH-2 CLASSIFICATION CHANGE
11/15/24	FINAL REVIEW COMMENTS ADDRESSED

### SPRINKLERS

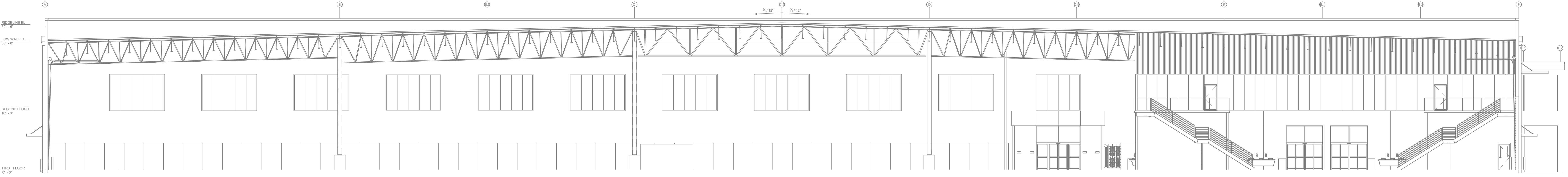
SYM	CNT	POSITION	FINISH	TEMP	K	NPT	ISN	MFG	MODEL#	ESCUTCHEON	MAX SPACING
1473	1	UPPRIGHT	BRASS	286	14.00	3/4"	RA425	RELIABLE	F1FR56	N/A	225 SF LIGHT 130 SF OH
1325	1	UPPRIGHT	BRASS	286	14.00	3/4"	VK570	VIKING	EQDREC OH	N/A	14x14
17	1	UPPRIGHT	BRASS	200	5.60	1/2"	RA425	RELIABLE	F1FR56	N/A	225 SF LIGHT 130 SF OH
35	1	PENDENT	WHITE	115	5.60	1/2"	R2115	RELIABLE	G4-C	CONCEALED	225 SF LIGHT
40	1	PENDENT	WHITE	165	11.20	3/4"	R7146	RELIABLE	G4-XLO	CONCEALED	18x18
6	1	PENDENT	WHITE	212	5.60	1/2"	R504	RELIABLE	WP96C	CONCEALED	10'-0" MAX BETWEEN SPRINKLERS
9	1	PENDENT	CHROME	OPEN	5.60	1/2"	RS02	RELIABLE	WPS6L	N/A	12'-0" MAX BETWEEN SPRINKLERS
10	1	PENDENT	STAINLESS	OPEN	5.60	1/2"	RS02	RELIABLE	WPS6L	N/A	12'-0" MAX BETWEEN SPRINKLERS
38	1	SPRING	BRASS	200	5.60	1/2"	RA425	RELIABLE	F1FR56	N/A	225 SF LIGHT 130 SF OH
5	1	SIDEWALL	BRASS	175	5.60	1/2"	TY3332	TYCO	TY-FRB	N/A	16x20
1911		TOTAL									

CONTRACT w/ ADDRESS CITY PHONE ARCHITECT ADDRESS CITY PHONE

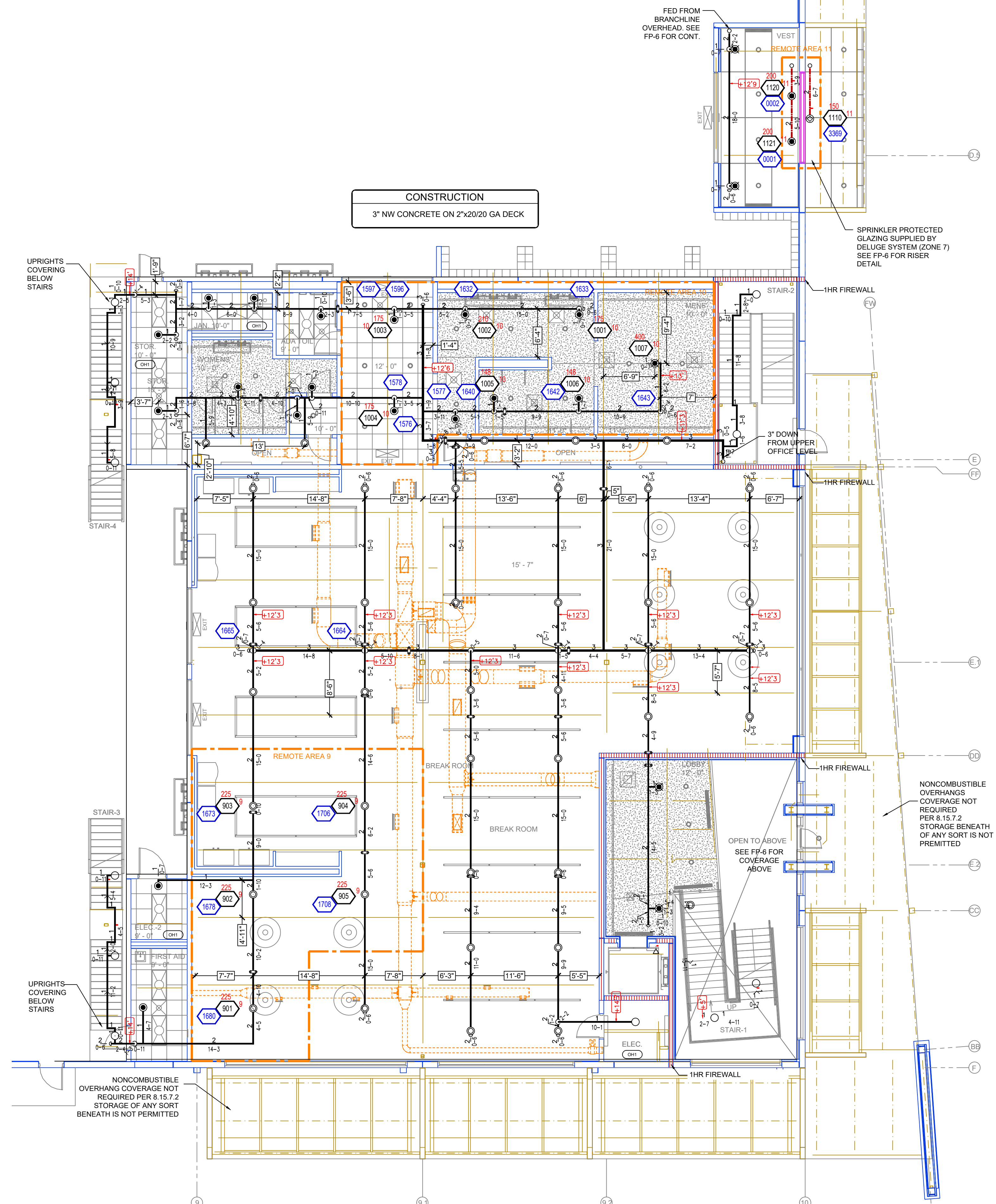
PROJECT: FIBREBOND WAREHOUSE BUILDING M3  
 ADDRESS: 1300 DAVENPORT DRIVE, MINDEN, LA, 71055  
 SHEET TITLE: ZONE 6 & 7 FIRE PROTECTION PLAN

DRAWN BY: AMM ESTIMATED BY: JOR TNO JOB NO: 10574 DATE: 11/04/24 SHEET 6 OF 7 SHEETS

NOTE: ALL SPRINKLERS SHALL BE QUICK RESPONSE UNLESS NOTED OTHERWISE



**A-BUILDING SECTION**



**ZONE #6 FIRE SPRINKLER - LOWER LEVEL OFFICE AREA**

**Design Area #9 HAZARD LIGHT**  
 Zone: 6 System Type: WET  
 Location: BREAKROOM  
 Flowing Outlets: 5  
 Density: 0.10 Remote Area: 1013  
 Flow: 214.1 gpm @ 48.3 psi  
 Calculation Safety: 19.5 psi  
 Includes 100 gpm Hose allowance  
 REMOTE AREA REDUCED BY 32.5% FOR 15'-0" CEILINGS PER 11.2.3.2.3

**Design Area #10 HAZARD LIGHT**  
 Zone: 6 System Type: WET  
 Location: MENS  
 Flowing Outlets: 7  
 Density: 0.10 Remote Area: 800  
 Flow: 294 gpm @ 55.1 psi  
 Calculation Safety: 12.5 psi  
 Includes 100 gpm Hose allowance  
 REMOTE AREA REDUCED BY 37% FOR 12'-0" CEILINGS PER 11.2.3.2.3

**Design Area #11 HAZARD LIGHT**  
 Zone: 7 System Type: DELUGE  
 Location: GLAZING  
 Flowing Outlets: 21  
 Density: 0.10 Remote Area:  
 Flow: 478.1 gpm @ 56.3 psi  
 Calculation Safety: 10.6 psi  
 Includes 100 gpm Hose allowance  
 ALL SPRINKLERS OF DELUGE SYSTEM CALCULATED PER SPRINKLER SPEC SHEET AND 11.3.2.1

**HANGER DETAILS**

MAXIMUM DISTANCE BETWEEN HANGERS

NOMINAL PIPE SIZE (in.)	1"	1-1/2"	2"	2-1/2"	3"	4"	6"
STEEL PIPE	12-0"	15-0"	15-0"	15-0"	12-0"	12-0"	6-3"

\*MAX DISTANCES FOR 3" - 6" PIPE DETERMINED BY STRUCTURAL ENGINEER

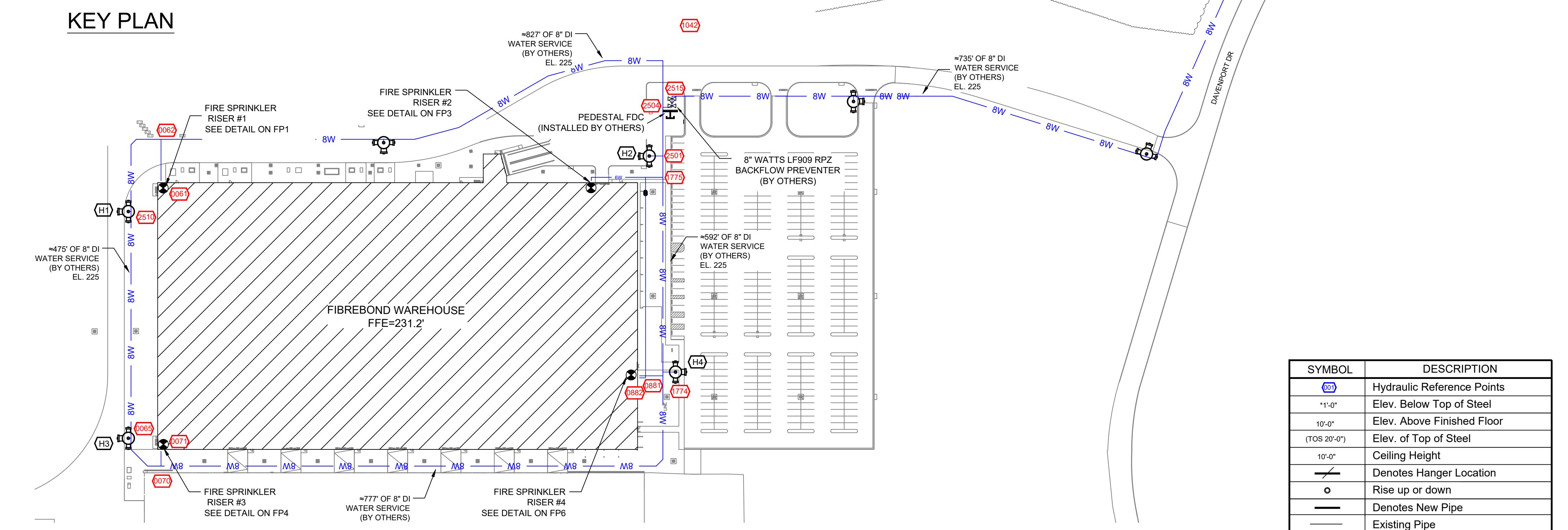
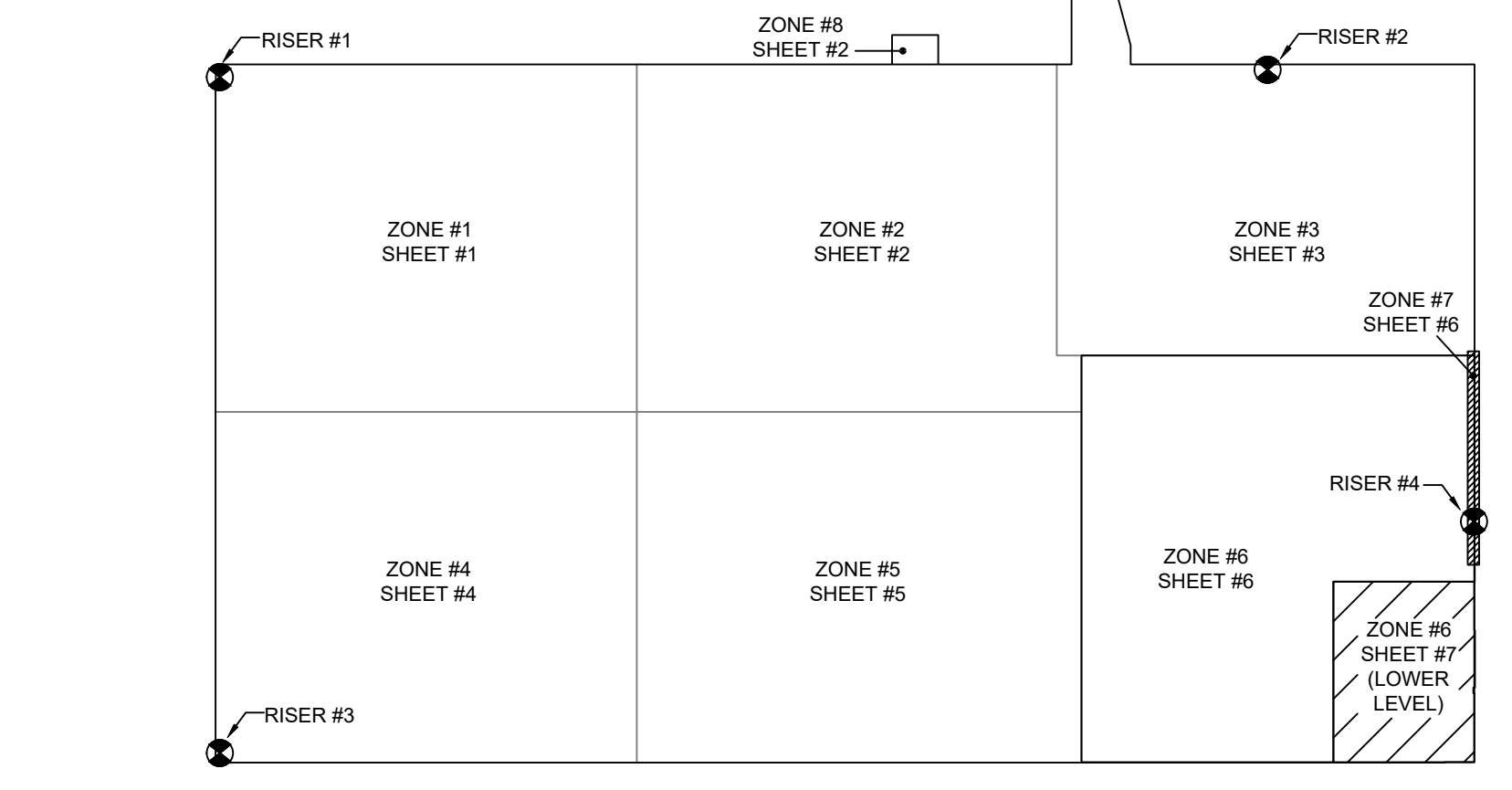
**PIPE LEGEND**

- BLACK STEEL WET SYSTEM PIPING
- BLACK STEEL DELUGE SYSTEM PIPING
- BLACK STEEL ANTIFREEZE SYSTEM PIPING
- UNDERGROUND DI PIPING (BY OTHERS)

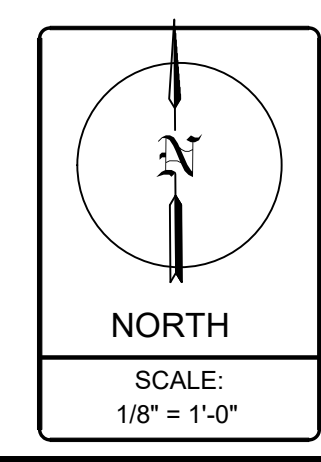
**FLOW TEST INFO:**  
 STATIC: 68 PSI  
 RESID: 60 PSI  
 FLOW: 1395 GPM  
 DATE: 03/01/24

**NOTE:**  
 DIFFERENCE IN ELEVATION FROM SOURCE TO BUILDING, INCLUDED IN CALCULATIONS.

- GENERAL NOTES**
- INSTALLATION STANDARDS:
    - SPRINKLER SYSTEM DESIGNED, INSTALLED & TESTED PER NFPA-13 2016 AND THE LOCAL AHJ
    - SPRINKLERED AREAS:
      - ZONE 1 = 48,354 S.F.
      - ZONE 2 = 45,408 S.F.
      - ZONE 3 = 46,378 S.F. (38,016 S.F. STORAGE + 8,362 S.F.)
      - ZONE 4 = 46,925 S.F.
      - ZONE 5 = 50,268 S.F.
      - ZONE 6 = UPPER LEVEL 49915 S.F. + LOWER LEVEL 8120 S.F.
      - ZONE 7 = 115 LF. OF WINDOWS
      - ZONE 8 = 410 S.F.
  - SPRINKLER PIPE TYPES:
    - 1" PIPE TO BE BLACK SCHEDULE 40 PIPING WITH THREADED FITTINGS
    - 1/2" THROUGH 6" PIPE TO BE BLACK SCHEDULE 10 PIPING WITH GROOVED FITTINGS
  - DESIGN CRITERIA
    - LIGHT HAZARD AREAS DESIGNED TO DELIVER 0.10 GPM/S.F. OVER THE MOST DEMANDING 1500 S.F.
    - ORDINARY HAZARD GROUP 1 DESIGNED TO DELIVER 0.15 GPM/S.F. OVER THE MOST DEMANDING 1500S F.
    - STORAGE AREA DESIGNED FOR PALLETIZED/PILED STORAGE OF CLASS II COMMODITIES UP TO 20'-0" HIGH AT A DENSITY OF 0.17 GPM/S.F. OVER THE MOST DEMANDING 2000 S.F. USING HIGH TEMP SPRINKLERS
    - DELUGE SYSTEM DESIGNED PER SPRINKLER CUT SHEETS TO DELIVER REQUIRED (15-20) GPM PER HEAD.
    - REMOTE AREA INCREASES AND REDUCTIONS HAVE BEEN CONSIDERED WHERE APPLICABLE PER NFPA 13 SEC. 11.2.3.2
  - NOTES:
    - ALL MATERIAL TO BE NEW AND MEET U.L. STANDARDS
    - HANGERS TO BE INSTALLED IN ACCORDANCE WITH NFPA 13 (2016) - SEE PLAN FOR HANGING REQ.



SYMBOL	DESCRIPTION
⊙	Hydraulic Reference Point
+1'-0"	Elev. Below Top of Steel
10'-0"	Elev. Above Finished Floor
(10S 20'-0")	Elev. of Top of Steel
10'-0"	Ceiling Height
—○—	Denotes Hanger Location
○	Rise up or down
—○—	Denotes New Pipe
—	Existing Pipe



**GENERAL SYSTEM INFORMATION**

- ALL THREADED PIPING - SCHEDULE 40
- ALL GROOVED PIPING - SCHEDULE 10
- TOTAL AREA PROTECTED BY SYSTEM = SEE PLAN
- DRY SYSTEM CAPACITY (IF APPLIC.) = N/A
- OCCUPANCY CLASSIFICATION (U.N.O.) - INTEGRATIONS AREA: OH-1 OFFICE: LIGHT
- ALL PIPING SHALL BE READILY AVAILABLE FOR FLUSHING

**WATER SUPPLY DATA**

STATIC PRESSURE: 68 psi  
 RESIDUAL PRESSURE: 60 psi  
 FLOW: 1395 gpm  
 ORIFICE SIZE: 2.5"  
 SIZE & TYPE OF MAIN  
 DATE OF FLOW TEST: 03-01-24  
 TIME OF FLOW TEST: 9:45 a.m.  
 LOCATION OF TEST: Davenport St  
 HYD 199 & 200

**DESIGN CRITERIA**

SEE REMOTE AREA REPORTS ON PLANS FP1 - FP7

**REVISIONS**

DATE	REVISIONS
11/4/24	OH-2 CLASSIFICATION CHANGE
11/15/24	FINAL REVIEW COMMENTS ADDRESSED

**SPRINKLERS**

SYM	QTY	POSITION	FINISH	TEMP	K	NPT	SR	MP'S	MODEL#	ESCUTCHEON/MAX SPACINGS
17	1	UPRRIGHT	BRASS	200	5.00	1/2"	RA1425	RELIABLE	FTFR56	N/A
17	1	UPRRIGHT	BRASS	200	5.00	1/2"	RA1425	RELIABLE	FTFR56	N/A
35	1	PENDENT	WHITE	212	5.60	1/2"	R2115	RELIABLE	GA-C	CONCEALED 225 SF LIGHT
40	1	PENDENT	WHITE	165	11.20	3/4"	R7146	RELIABLE	GA-XLO	CONCEALED 18x18
8	1	PENDENT	WHITE	212	5.60	1/2"	R504	RELIABLE	WP56C	CONCEALED 15-0 MAX BETWEEN SPRINKLERS
9	1	PENDENT	CHROME	200	5.00	1/2"	R502	RELIABLE	WP56L	N/A
13	1	PENDENT	STAINLESS	200	5.00	1/2"	R502	RELIABLE	WP56L	N/A
38	1	SPRIG	BRASS	200	5.00	1/2"	RA1425	RELIABLE	FTFR56	N/A
41	1	SEAWALL	BRASS	175	5.60	1/2"	TY3332	TYCO	TY-FRB	N/A
1291	1	TOTAL								

**CONTRACT w/**  
 ADDRESS  
 CITY  
 PHONE

**ARCHITECT**  
 ADDRESS  
 CITY  
 PHONE

**PROJECT:** FIBREBOND WAREHOUSE BUILDING M3  
**ADDRESS:** 1300 DAVENPORT DRIVE,  
 CITY: MINDEN, LA. 71055

**SHEET TITLE:** ZONE 6 FIRE PROTECTION PLAN

**DRAWN BY:** AMM  
**ESTIMATED BY:**  
 JOB NO: 10574  
 DATE: 11/04/24  
**SHEET**  
**7**  
 OF 7 SHEETS