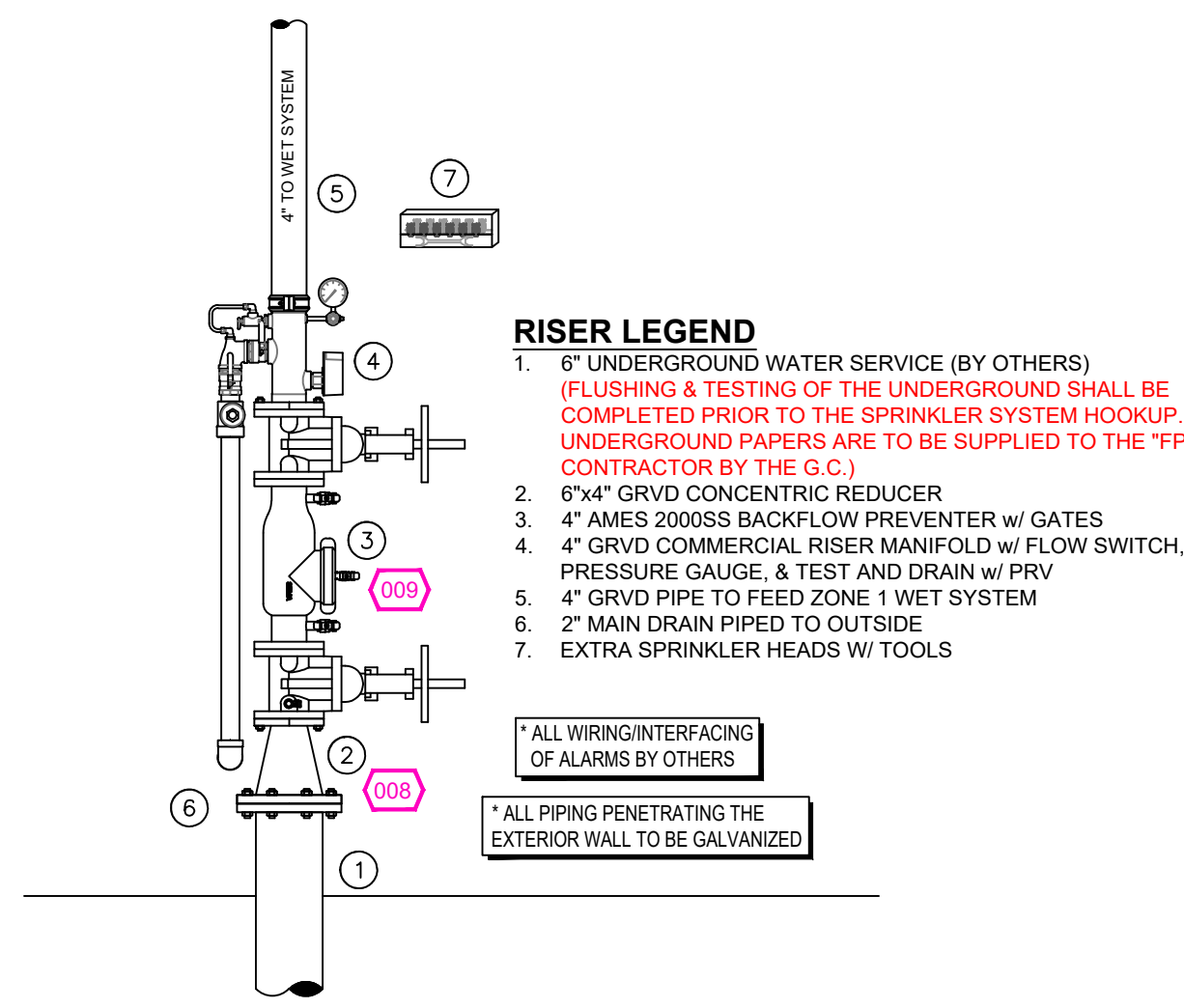
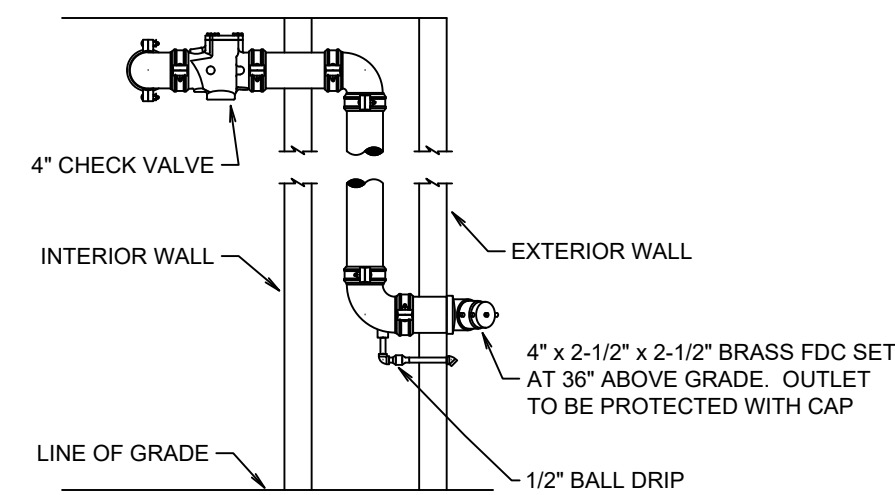


GENERAL NOTES

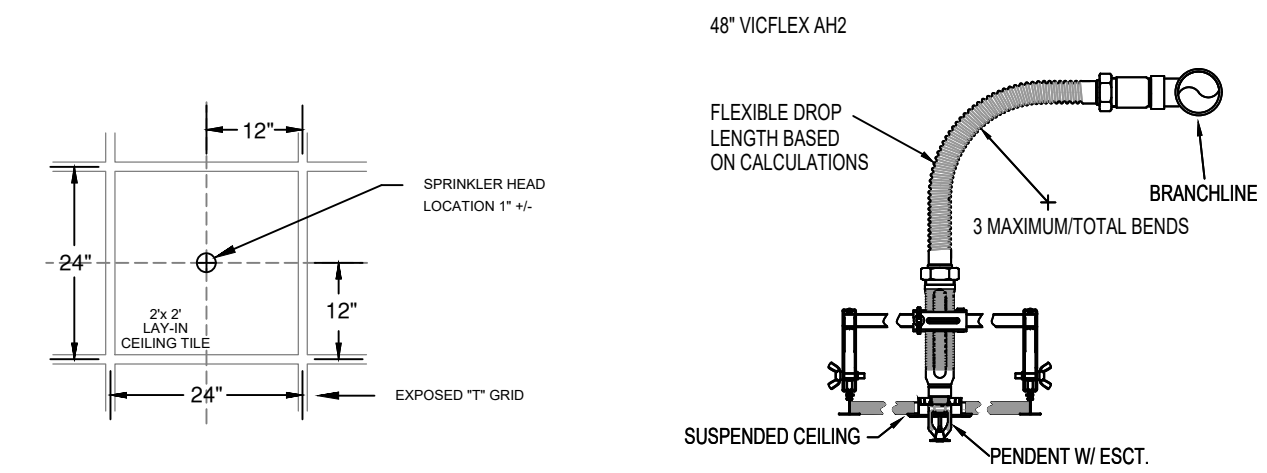
1. MINNESOTA BUILDING CODE (2020)
  - 1.1. OCCUPANCY: GROUP A-3, B, S-2
  - 1.2. TYPE OF CONSTRUCTION: III-B
  - 1.3. SPRINKLERED AREAS (APPROXIMATE - SEE ARCHITECTURAL PLANS FOR ACTUAL)
    - ASSEMBLY (ZONE 1 GROUP A-3) = 2,020 S.F.
    - BUSINESS (ZONE 1 GROUP B) = 23,628 S.F.
    - STORAGE (ZONE 1 GROUP S-2) = 3,225 S.F.
    - TOTAL = 25,873 S.F.
- 1.4. INSTALLATION STANDARDS:
  - SPRINKLER SYSTEM DESIGNED AND INSTALLED PER NFPA-13 (2016)
2. SPRINKLER PIPE TYPES:
  - 2.1. 1" BRANCH LINES TO BE BLK SCHEDULE 40 PIPING WITH THREADED FITTINGS
  - 2.2. 1-1/2" BRANCH LINES & 4" MAINS TO BE BLK SCHEDULE 10 PIPING WITH GROOVED FITTINGS
  - 2.3. ALL SPRINGS TO BE 1" SCHEDULE 40 THREADED PIPE
3. DESIGN CRITERIA
  - 3.1. OFFICES, CORRIDORS, LOBBYS, AND SIMILAR AREAS DESIGNED TO LIGHT HAZARD
  - 3.2. MECH ROOMS, STORAGE ROOMS, AND SIMILAR AREAS DESIGNED TO ORDINARY HAZARD GROUP 1
- NOTES:
  - 3.3. ALL MATERIAL TO BE NEW AND MEET U.L. STANDARDS
  - 3.4. HANGERS TO BE INSTALLED IN ACCORDANCE WITH NFPA-13 (2016) - SEE PLAN FOR HANGING REQUIREMENTS
4. SYMBOLS USED ON DRAWINGS:
  - E(10') PIPE ELEVATION A.F.F
  - E(12') PIPE ELEVATION BELOW B.O.D
  - (RM) ROOM HAZARD CLASSIFICATION (ALL ROOMS ARE CONSIDERED LIGHT HAZARD UNLESS NOTED)
  - (H) HYDRAULIC CALCULATION JUNCTION POINT
  - 0'-0" CEILING HEIGHT
5. SCOPE OF WORK:
  - 5.1. TO INSTALL A NEW WET SPRINKLER SYSTEM IN WCCSC BUILDING.
  - 5.2. FDC WILL BE LOCATED AT THE NORTH SIDE OF THE BUILDING, JUST OUTSIDE STAFF VESTIBULE 154.
  - 5.3. ALL AREAS OF THE BUILDING TO BE INSTALLED AND COVERED IN ACCORDANCE WITH THE LOCAL AUTHORITY HAVING JURISDICTION AND PER NFPA-13



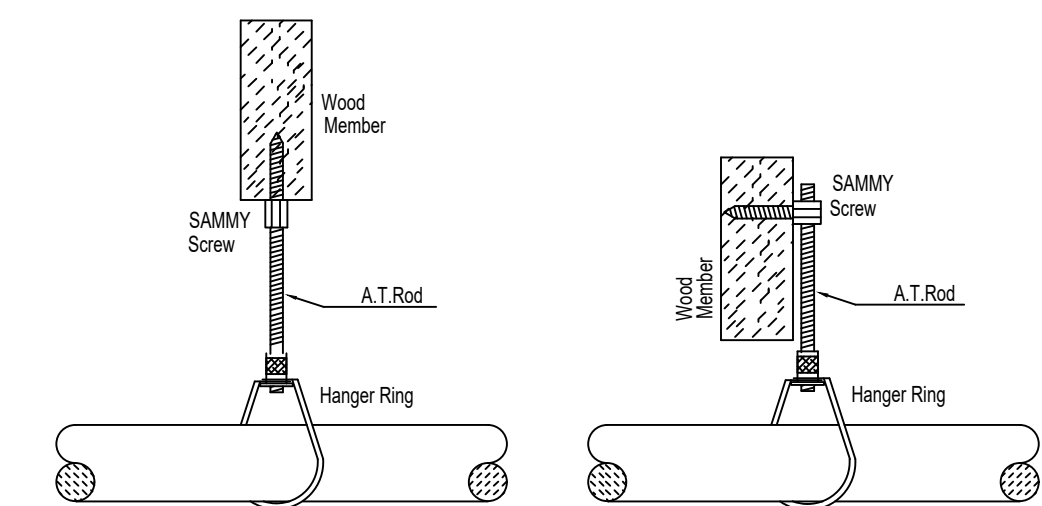
**1 RISER DETAIL**  
SCALE: 1/2" = 1'-0"



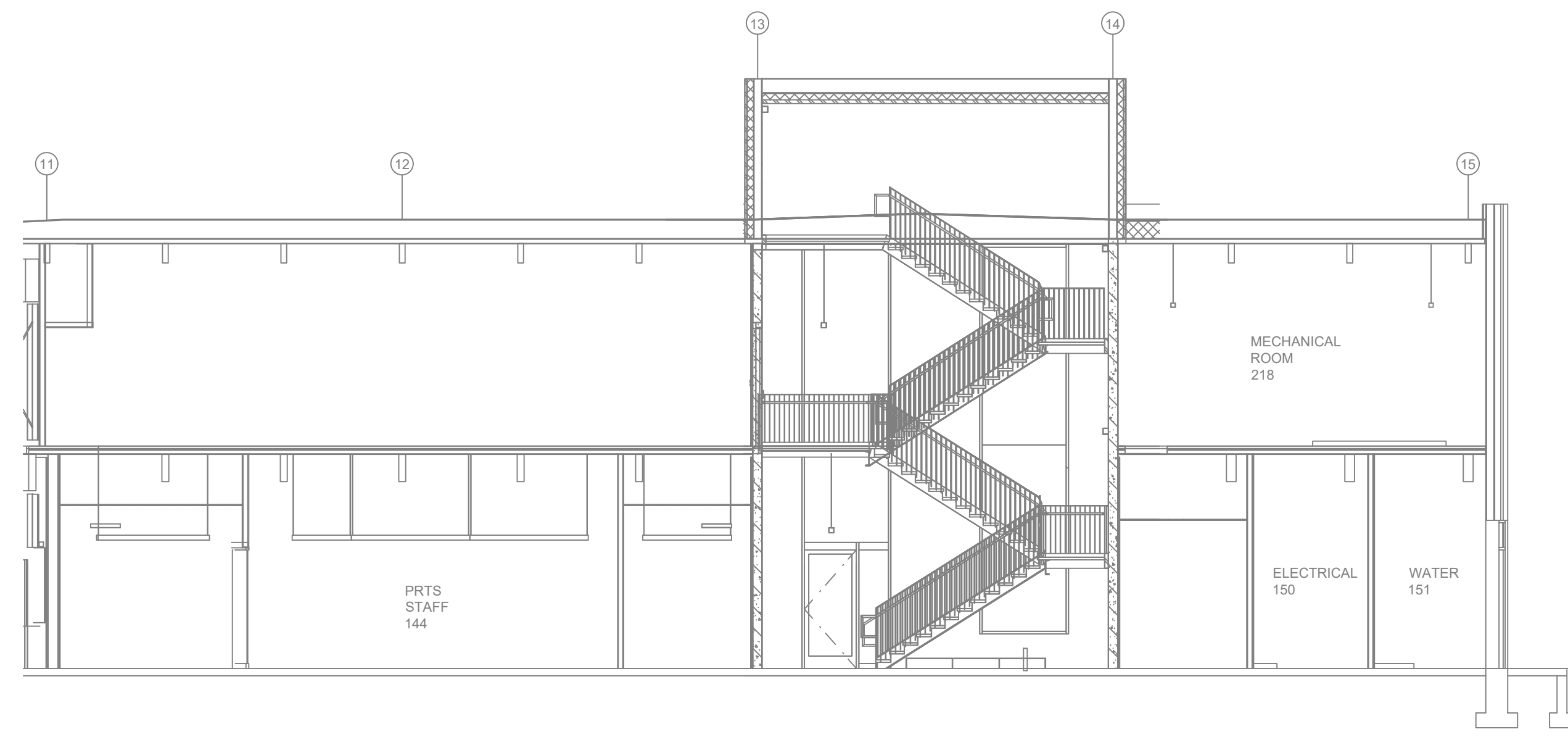
**2 F.D.C. DETAIL**  
SCALE: 1/2" = 1'-0"



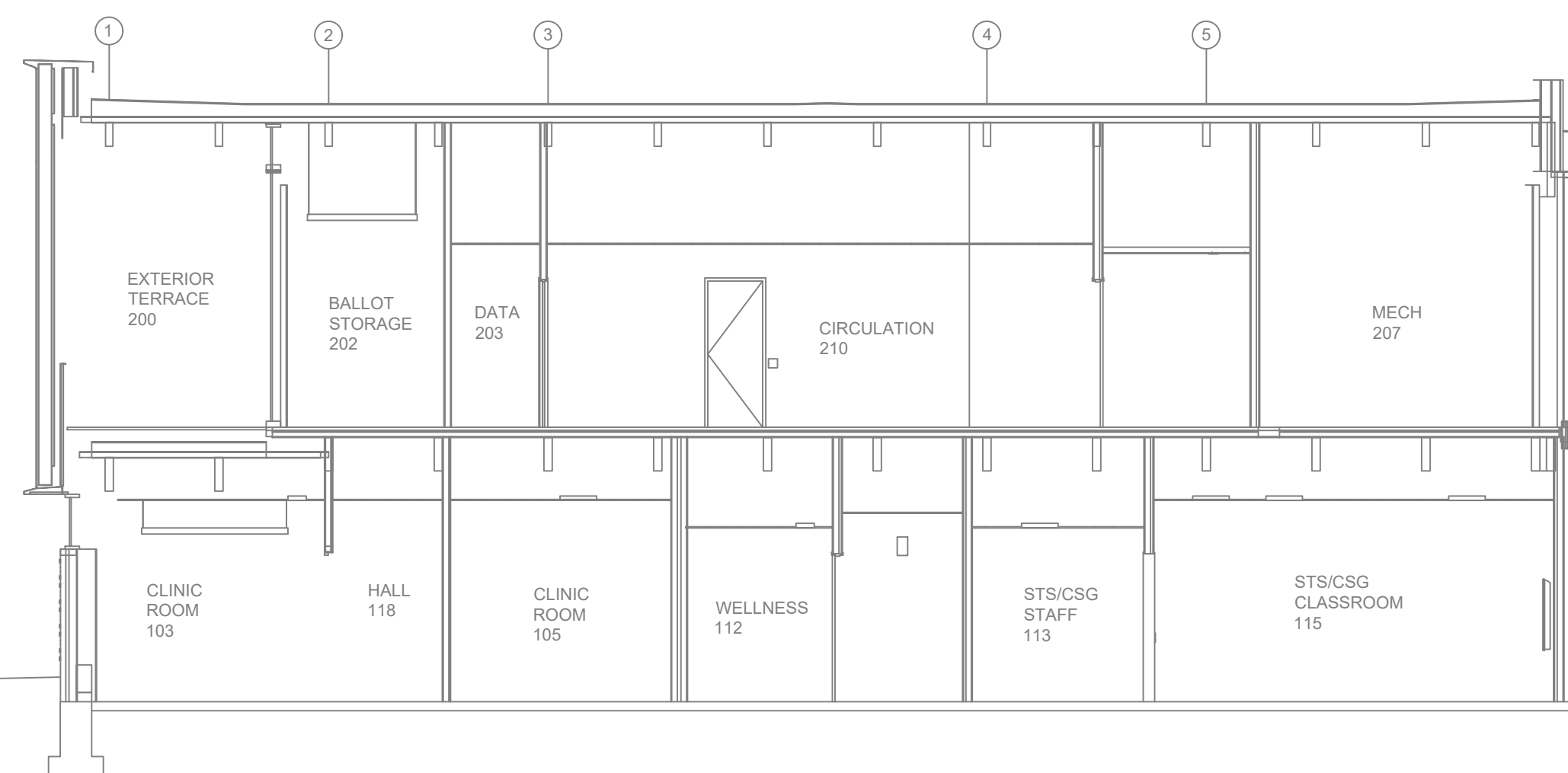
**INSTALLATION DETAILS**



**HANGER DETAILS**



**A BUILDING SECTION**  
SCALE= 1/8" : 1'-0"



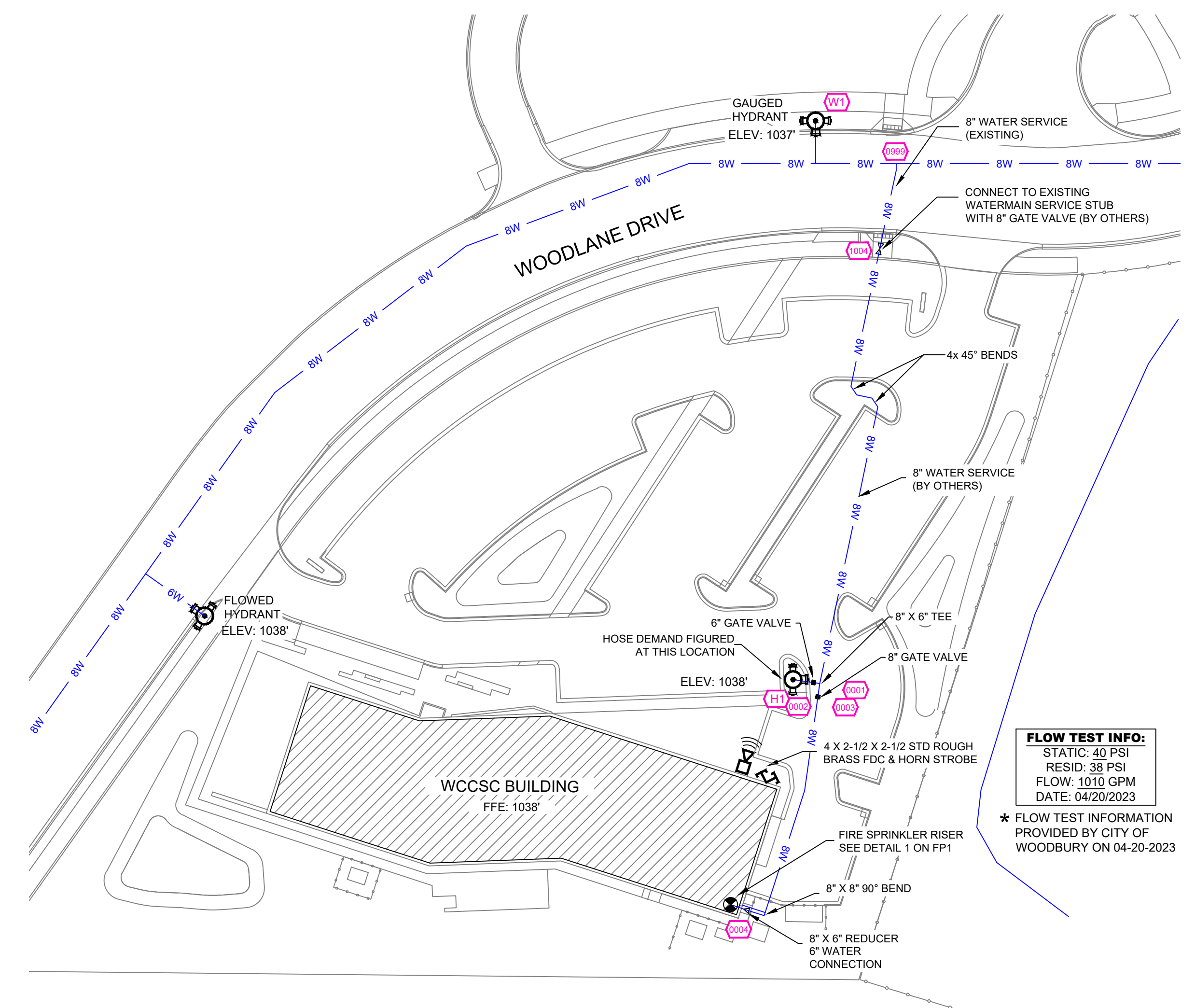
**B BUILDING SECTION**  
SCALE= 1/8" : 1'-0"

SYM	CNT	POSITION	FINISH	TEMP	K	NPT	SN	MFG	MODEL#	ESCU/CHCN	MAX SPACING	
110		PENDENT	WHITE	200	5.60	1/2"	TY3231	Tyco	TY-FRB	RECESSED	225 / 130 SQ. FT.	
197		UPRIGHT	BRASS	200	5.60	1/2"	TY3131	Tyco	TY-FRB	N/A	188 SQ. FT.	
222		UPR / SPRNG	BRASS	200	5.60	1/2"	TY3131	Tyco	TY-FRB	N/A	188 SQ. FT.	
7		SIDEWALL	CHROME	200	5.60	1"	TY3338	Tyco	DS-1	STANDARD	14' X 14'	
2		UPRIGHT	BRASS	200	5.60	1/2"	TY3131	Tyco	TY-FRB	N/A	130 SQ. FT.	
438		TOTAL HEADS										

**SPRINKLER HEAD LEGEND**

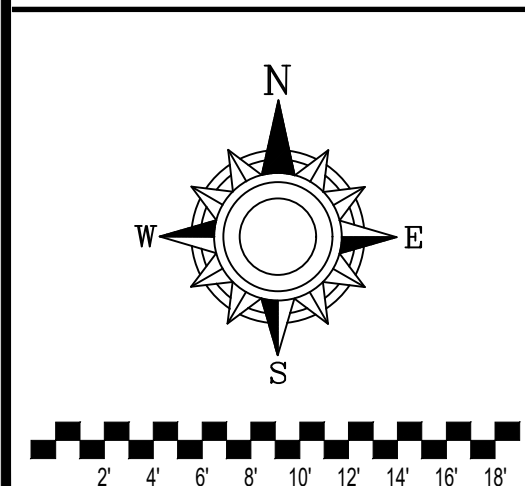
NOMINAL SIZE	MAX SPACING
1"	12'-0"
1-1/4"	12'-0"
1-1/2"	15'-0"
2"	15'-0"
2-1/2"	15'-0"
3"	15'-0"
4" & LARGER	15'-0"

NFPA 13 STEEL PIPE HANGER SPACING (EXCEPT LIGHT WALL THRD PIPING)



**SITE PLAN**  
SCALE: 1" = 50'-0"

**FLOW TEST INFO:**  
STATIC: 40 PSI  
RESID: 33 PSI  
FLOW: 1010 GPM  
DATE: 04/20/2023  
\* FLOW TEST INFORMATION PROVIDED BY CITY OF WOODBURY ON 04-20-2023



GENERAL NOTES

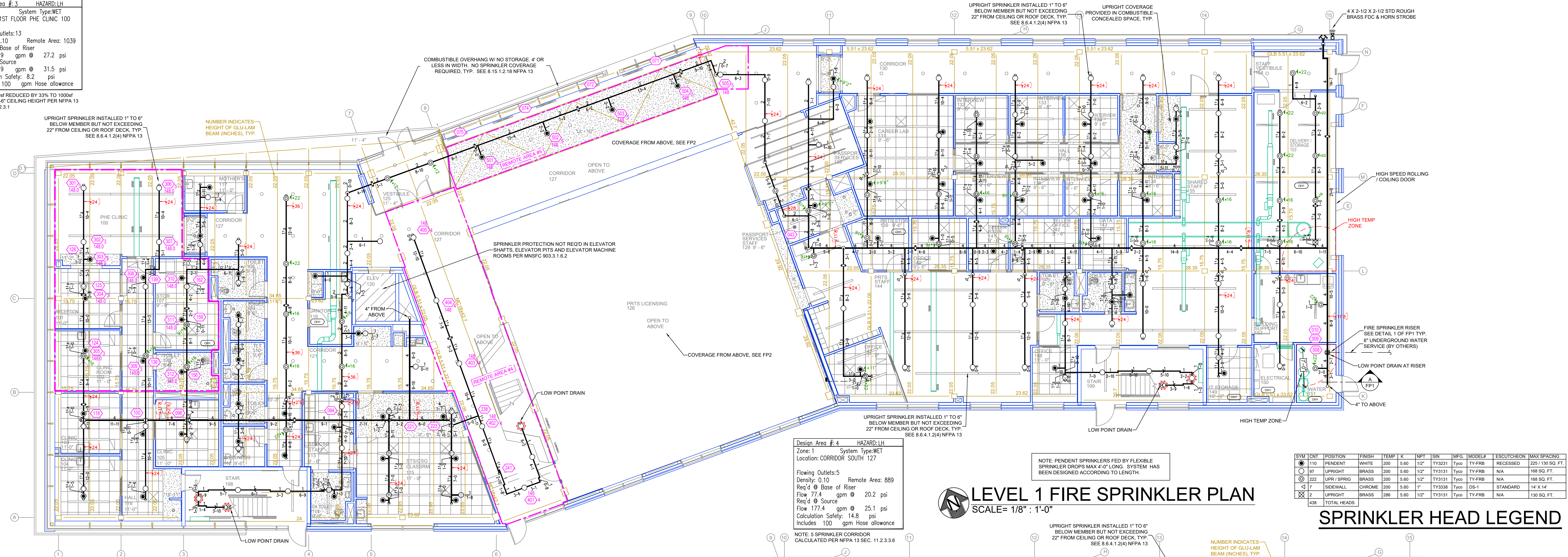
1. SYSTEM INSTALLED PER NFPA-13 (2016 EDITION) AND STATE FIRE MARSHAL
2. ALL EQUIPMENT FOR THIS SYSTEM SHALL BE U.L. LISTED
3. MINIMUM PIPE SIZE SHALL BE 1" NOMINAL PIPE
4. ALL SCH-10 & LIGHTWALL PIPING HAS WELDED OUTLETS & GROOVED SHORT RADIUS FITTINGS
5. ALL WELDING PER NFPA-54(2)
6. NO INSTALLATION OR FABRICATION TO BEGIN WITHOUT APPROVED SHOP DRAWINGS
7. ALL PIPE LOCATIONS ARE TO BE FIELD MEASURED PRIOR TO FABRICATION AND INSTALLATION BY SPRINKLER CONTRACTOR
8. ALL DIMENSIONS SHOWN ARE CENTER TO CENTER
9. HIGH TEMPERATURE HEADS ARE TO BE FIELD LOCATED WHERE REQUIRED
10. PROVIDE ON SPARE HEAD CABINET W/ HEADS & 1 HEAD WRENCH
11. HANGERS ARE TO BE U.L. LISTED AND I.M. APPROVED
12. ELECTRICAL WIRING, ALARM, DETECTION AND SUPERVISORY BY OWNER
13. OWNER'S RESPONSIBILITY TO PROVIDE ADEQUATE HEATING TO PREVENT WET SYSTEM PIPING FROM FREEZING.

NO	REVISIONS	DATE	APPROVAL STAMPS
1			
2			

Drawing Title: WCCSC BUILDING <h1>CENTRAL SERVICE CENTER</h1> 1261 WOODLANE DRIVE WOODBURY, MN 55125	Contract No.: C24-4 Drawing Date: 5/2/2024 Scale: 1/8" = 1'-0" Drawn By: MDK Approval By: STATE FIRE MARSHAL DIV. SHEET NO: FP 1 of 2
---	--



Design Area # 3 HAZARD: LH  
 Zone: 1 System Type: WET  
 Location: 1ST FLOOR PHE CLINIC 100  
 Flowing Outlets: 13  
 Density: 0.10 Remote Area: 1039  
 Req'd @ Base of Riser  
 Flow 213.9 gpm @ 27.2 psi  
 Req'd @ Source  
 Flow 313.9 gpm @ 31.5 psi  
 Calculation Safety: 8.2 psi  
 Includes 100 gpm Hose allowance  
 NOTE: 1500ft REDUCED BY 33% TO 1000ft  
 DUE TO 14'-6" CEILING HEIGHT PER NFPA 13  
 FIG. 11.2.3.2.3.1



Design Area # 4 HAZARD: LH  
 Zone: 1 System Type: WET  
 Location: CORRIDOR SOUTH 127  
 Flowing Outlets: 5  
 Density: 0.10 Remote Area: 889  
 Req'd @ Base of Riser  
 Flow 77.4 gpm @ 20.2 psi  
 Req'd @ Source  
 Flow 177.4 gpm @ 25.1 psi  
 Calculation Safety: 14.8 psi  
 Includes 100 gpm Hose allowance  
 NOTE: 5 SPRINKLER CORRIDOR  
 CALCULATED PER NFPA 13 SEC. 11.2.3.3.6

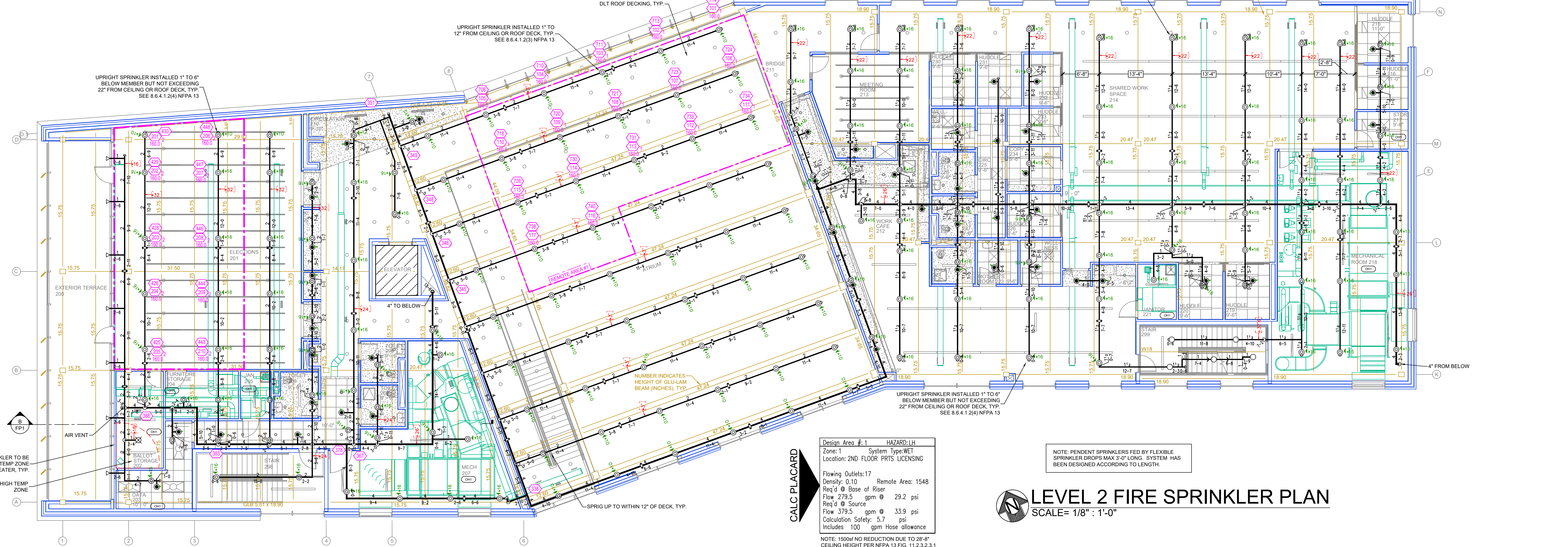
NOTE: PENDENT SPRINKLERS FED BY FLEXIBLE  
 SPRINKLER DROPS MAX 4'-0" LONG. SYSTEM HAS  
 BEEN DESIGNED ACCORDING TO LENGTH.

**LEVEL 1 FIRE SPRINKLER PLAN**  
 SCALE = 1/8" = 1'-0"

SYM	QTY	POSITION	FINISH	TEMP	K	NPT	SN	MPS	MODEL	ESCUTCHEON	MAX SPACING	
110		PENDENT	WHITE	200	5.60	1/2"	TY3231	Typ	TY-FRB	RECESSED	225 / 130 SQ. FT.	
97		UPRIGHT	BRASS	200	5.60	1/2"	TY3131	Typ	TY-FRB	N/A	168 SQ. FT.	
222		UPR SPRIG	BRASS	200	5.60	1/2"	TY3131	Typ	TY-FRB	N/A	168 SQ. FT.	
17		SIDEWALL	CHROME	200	5.60	1"	TY3338	Typ	DS-1	STANDARD	14' x 14'	
2		UPRIGHT	BRASS	286	5.60	1/2"	TY3131	Typ	TY-FRB	N/A	130 SQ. FT.	
438		TOTAL HEADS										

**SPRINKLER HEAD LEGEND**

Design Area # 2 HAZARD: LH  
 Zone: 1 System Type: WET  
 Location: ELECTIONS 201  
 Flowing Outlets: 11  
 Density: 0.10 Remote Area: 1138  
 Req'd @ Base of Riser  
 Flow 185 gpm @ 25.7 psi  
 Req'd @ Source  
 Flow 285 gpm @ 29.8 psi  
 Calculation Safety: 10 psi  
 Includes 100 gpm Hose allowance  
 NOTE: 1500ft REDUCED BY 30% TO 1050ft  
 DUE TO 16'-8" CEILING HEIGHT PER NFPA 13  
 FIG. 11.2.3.2.3.1



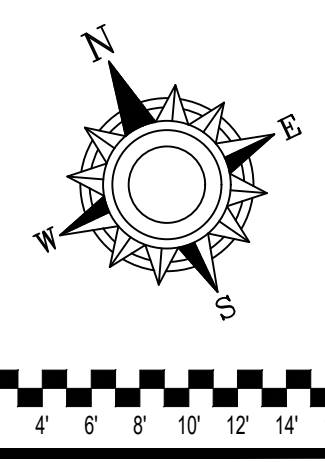
Design Area # 1 HAZARD: LH  
 Zone: 1 System Type: WET  
 Location: 2ND FLOOR PRTS LICENSING  
 Flowing Outlets: 17  
 Density: 0.10 Remote Area: 1548  
 Req'd @ Base of Riser  
 Flow 279.5 gpm @ 29.2 psi  
 Req'd @ Source  
 Flow 379.5 gpm @ 33.9 psi  
 Calculation Safety: 5.7 psi  
 Includes 100 gpm Hose allowance  
 NOTE: 1500ft NO REDUCTION DUE TO 28'-6"  
 CEILING HEIGHT PER NFPA 13 FIG. 11.2.3.2.3.1

NOTE: PENDENT SPRINKLERS FED BY FLEXIBLE  
 SPRINKLER DROPS MAX 3'-0" LONG. SYSTEM HAS  
 BEEN DESIGNED ACCORDING TO LENGTH.

**LEVEL 2 FIRE SPRINKLER PLAN**  
 SCALE = 1/8" = 1'-0"

- GENERAL NOTES
- SYSTEM INSTALLED PER NFPA-13 (2016 EDITION) AND STATE FIRE MARSHAL
  - ALL EQUIPMENT FOR THIS SYSTEM SHALL BE U.L. LISTED
  - MINIMUM PIPE SIZE SHALL BE 1" NOMINAL PIPE
  - ALL SCH-40 & LIGHTWALL PIPING HAS WELDED OUTLETS & GROOVED SHORT RADIUS FITTINGS
  - ALL WELDING PER NFPA-54(22)
  - NO INSTALLATION OR FABRICATION TO BEGIN WITHOUT APPROVED SHOP DRAWINGS
  - ALL WIRE LOCATIONS ARE TO BE FIELD MEASURED PRIOR TO FABRICATION AND INSTALLATION BY SPRINKLER CONTRACTOR
  - ALL DIMENSIONS SHOWN ARE CENTER TO CENTER
  - HIGH TEMPERATURE HEADS ARE TO BE FIELD LOCATED WHERE REQUIRED
  - PROVIDE ON SPARE HEAD CABINET WITH HEADS & HEAD WRENCH
  - HANGERS ARE TO BE U.L. LISTED AND I.M. APPROVED
  - ELECTRICAL WIRING, ALARMS, DETECTION AND SUPERVISORY BY OWNER
  - OWNER'S RESPONSIBILITY TO PROVIDE ADEQUATE HEATING TO PREVENT WET SYSTEM PIPING FROM FREEZING.

NO	REVISIONS	DATE	APPROVAL STAMPS
1			
2			



Drawing Title: WCCSC BUILDING

**CENTRAL SERVICE CENTER**

1261 WOODLANE DRIVE  
 WOODBURY, MN 55125

Contract No: C24-4  
 Drawing Date: 5/2/2024  
 Scale: 1/8" = 1'-0"  
 Drawn By: MDK  
 Approval By: STATE FIRE MARSHAL DIV.  
 SHEET NO: FP 2 of 2